

**INDEX OF SHEETS**

- 1. TITLE SHEET
- 2. GENERAL NOTES/CONTROLS
- 3-31. PLAN AND PROFILE
- 32-33. CULVERT PROFILES
- 34. MISC. DETAILS
- 35. TYPICAL SECTIONS & MISC. DETAILS
- 36. SEGMENTAL RETAINING WALL DETAIL
- 37. SIGNING DETAILS AND QUANTITIES
- 38. MISC. PAVEMENT MARKING DETAILS SHEET
- 39. GENERAL TRAFFIC CONTROL
- 40. TYPICAL TRAFFIC CONTROL WORK
- 41. CHANNELIZING DEVICES
- 42. TRAFFIC CONTROL SIGNS
- 43. EROSION CONTROL SEEDING - SODDING
- 44. TEMP. PROJECT WATER POLLUTION CONTROL
- 45. TEMP. PROJECT WATER POLLUTION CONTROL
- 46. TEMP. PROJECT WATER POLLUTION CONTROL
- 47. TEMP. PROJECT WATER POLLUTION CONTROL
- 48. TEMP. PROJECT WATER POLLUTION CONTROL
- 49. SUMMARY OF QUANTITIES/RIPRAP DETAIL

**STATE OF KANSAS  
DEPARTMENT OF TRANSPORTATION**

**PLAN AND PROFILE OF PROPOSED  
K96 BIKEPATH**

**GROVE PARK TO OLIVER**

**FEDERAL AID PROJECT**

**CITY OF WICHITA PROJECT NO. 472-82850**

**INDEX CODE: 785972**

**WICHITA, SEDGWICK COUNTY**

**K.D.O.T. PROJECT NO. 87TE-0115-01**

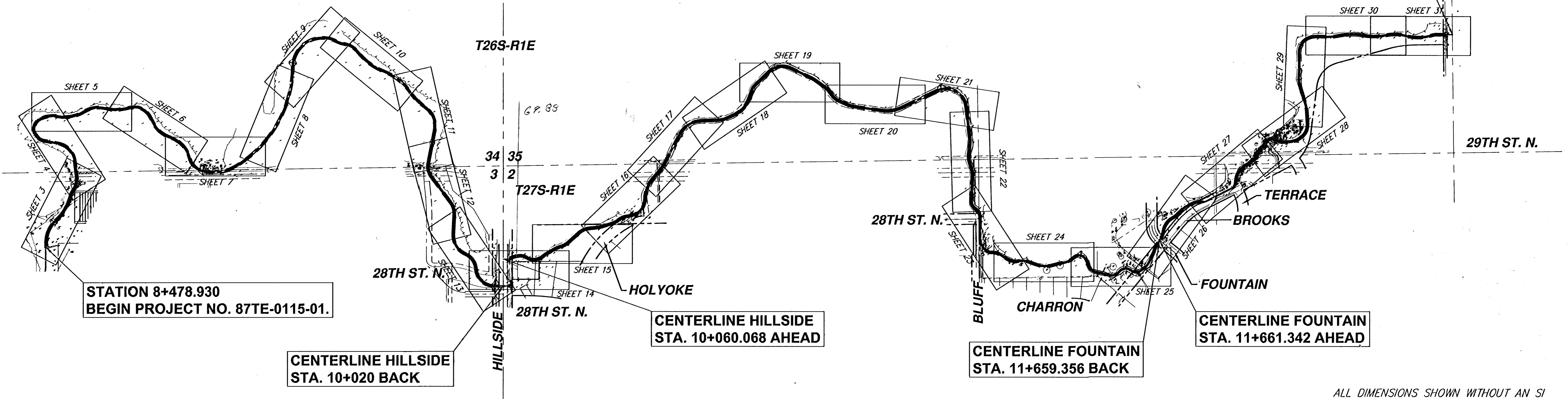
**POPULATION = 305,000**

FHWA REGION NO.	STATE	PROJECT NUMBER	FISCAL YEAR	SHEET NUMBER	TOTAL SHEETS
7	KANSAS	87TE-0115-01	2002	1	49

FED. AID NO. TBA-T011 (501)

**GRADING  
SURFACING  
PAVEMENT MARKINGS  
SEEDING**

SCALE:  
1:3200



**STATION 8+478.930  
BEGIN PROJECT NO. 87TE-0115-01.**

**CENTERLINE HILLSIDE  
STA. 10+020 BACK**

**CENTERLINE HILLSIDE  
STA. 10+060.068 AHEAD**

**CENTERLINE FOUNTAIN  
STA. 11+659.356 BACK**

**CENTERLINE FOUNTAIN  
STA. 11+661.342 AHEAD**

**STATION 12+416.481 END  
PROJECT NO. 87TE-0115-01.**

**DESIGN DESIGNATION**

FOR BICYCLES  
V = 30 KM/H  
CLEAR ZONE = 1.0 M

GROSS LENGTH OF PROJECT 3890.294 M  
EXCEPTIONS \_\_\_\_\_  
ADDITIONS \_\_\_\_\_

NET LENGTH OF PROJECT 3 890.294 M 3.890 KM  
NET LENGTH OF BRIDGES \_\_\_\_\_ M \_\_\_\_\_ KM  
NET LENGTH OF ROADS \_\_\_\_\_ M \_\_\_\_\_ KM

**DESIGN DATA**

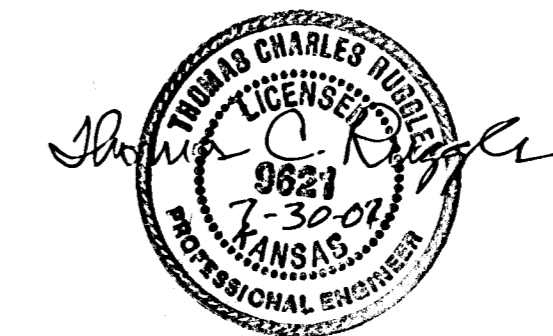
DESIGN SPEED = 30 KPH  
DESIGN WIDTH = 3 m (2.5 m MINIMUM WHERE NECESSARY)  
CLEAR ZONE = 1 m

ALL DIMENSIONS SHOWN WITHOUT AN SI SUFFIX ARE IN MILLIMETERS. ALL ELEVATIONS ARE IN METERS. (MSL DATUM)

APPROVED - DATE

*Neil D. Cable* 11-4-02

**NEIL D. CABLE, P.E., CITY ENGINEER  
WICHITA, KANSAS  
PROJ. NO. 472-76-245-82740-000-000-001**



**SRB** 924 NORTH MAIN 316-264-8008  
WICHITA, KANSAS 67203 FAX 264-4621  
**SAVOY, RUGGLES & BOHM, P. A.**  
ENGINEERING & SURVEYING