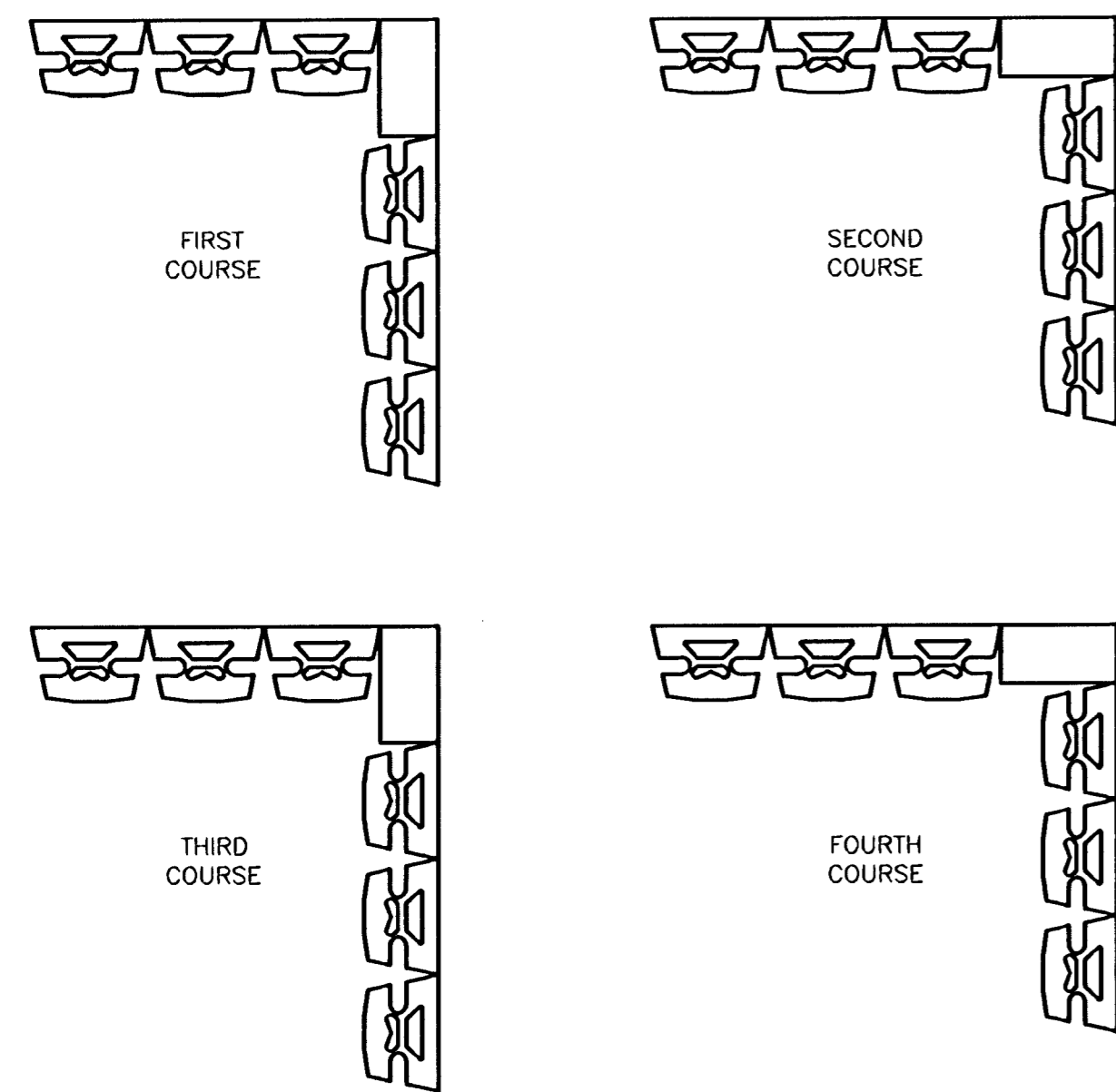


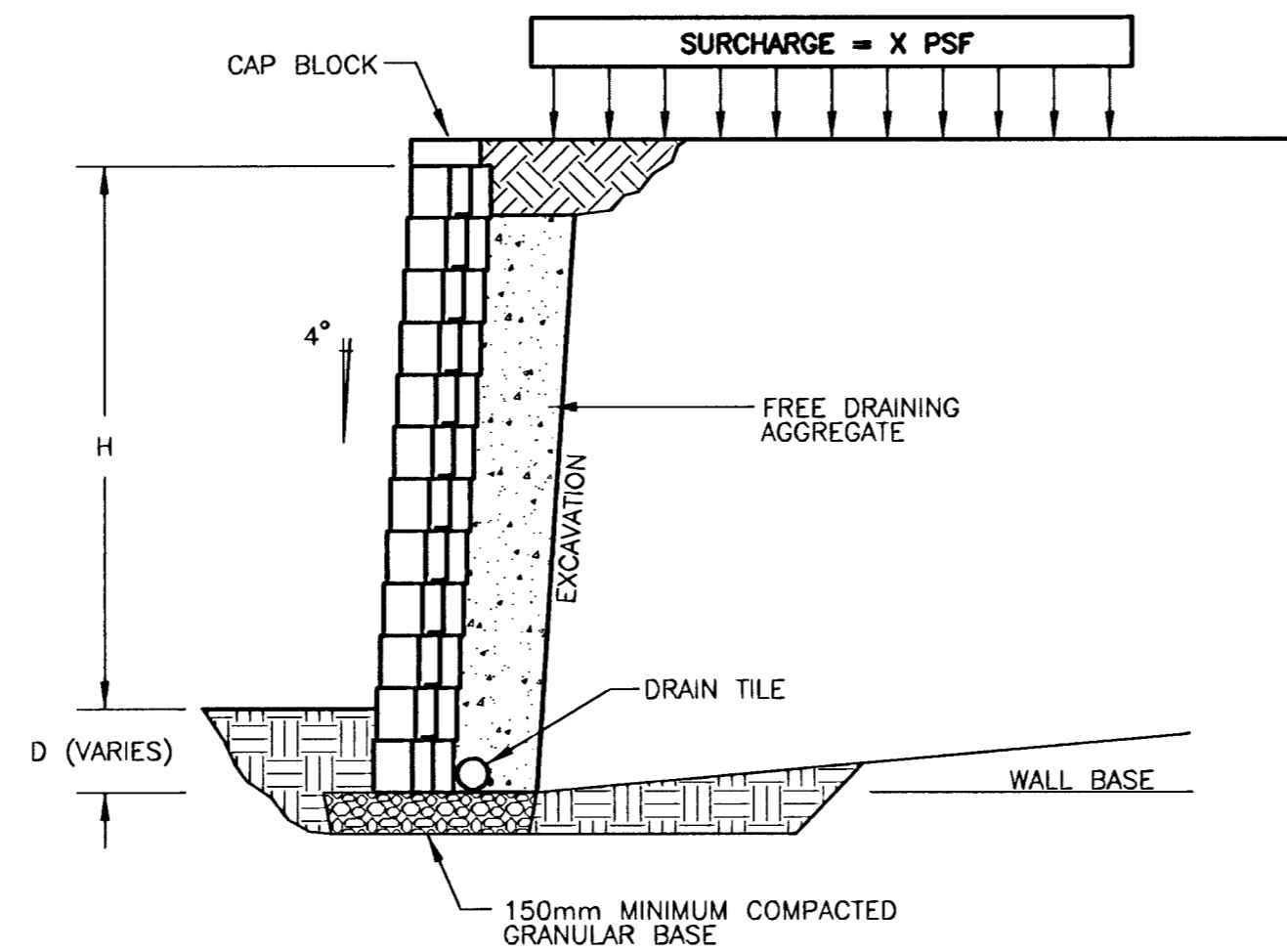
FHWA REGION NO.	STATE	PROJECT NUMBER	FISCAL YEAR	SHEET NUMBER	TOTAL SHEETS
7	KANSAS	871E-0115-01	1997	36	49

BY	DATE
REFERENCES NOTED	REFERENCES CHECKED

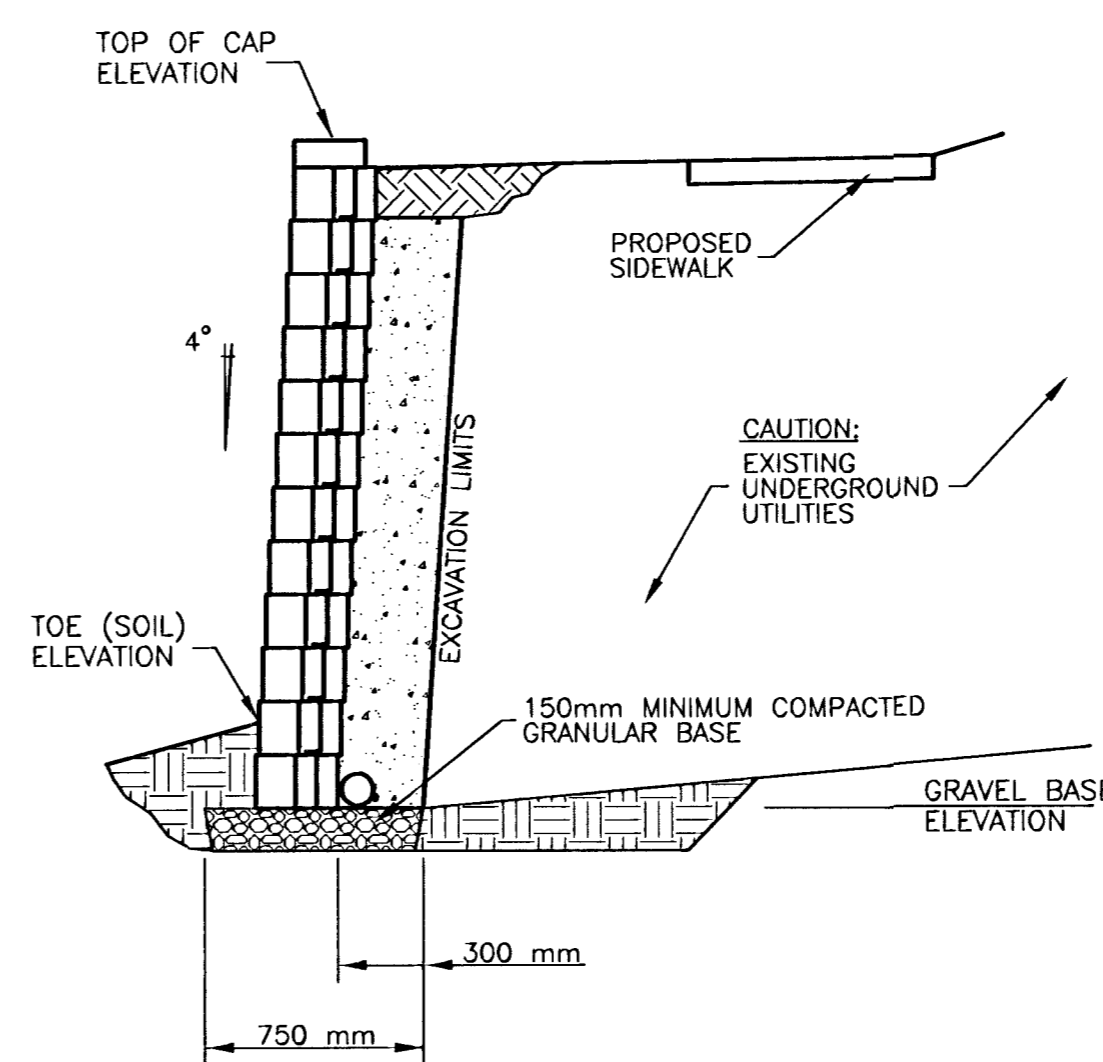


ANCHOR VERTICA/VERTICA PRO CORNER UNIT

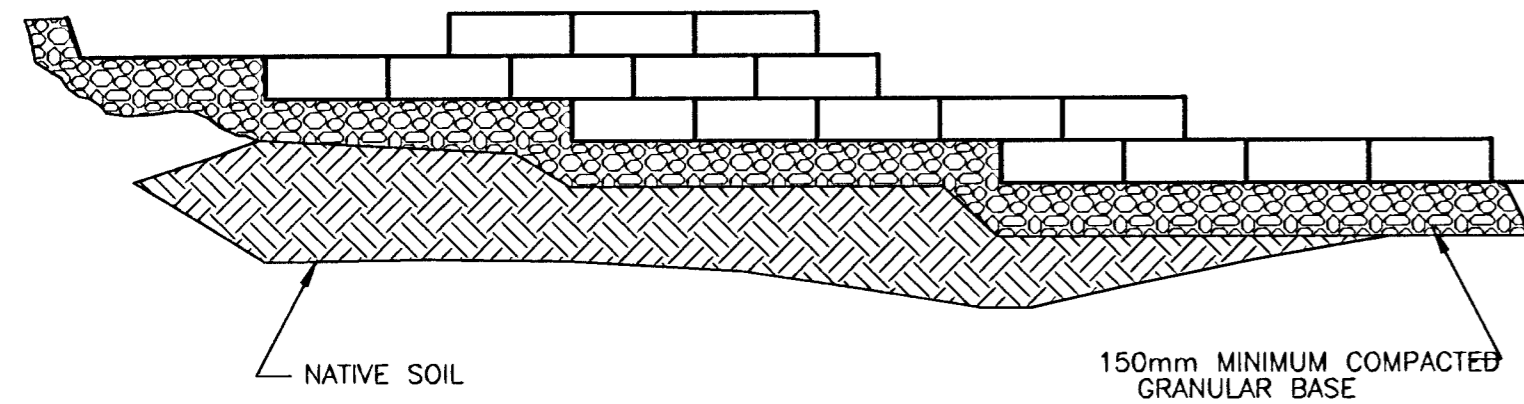
ANCHOR VERTICA - STRAIGHT UNITS  
TYPICAL 90° OUTSIDE CORNERS



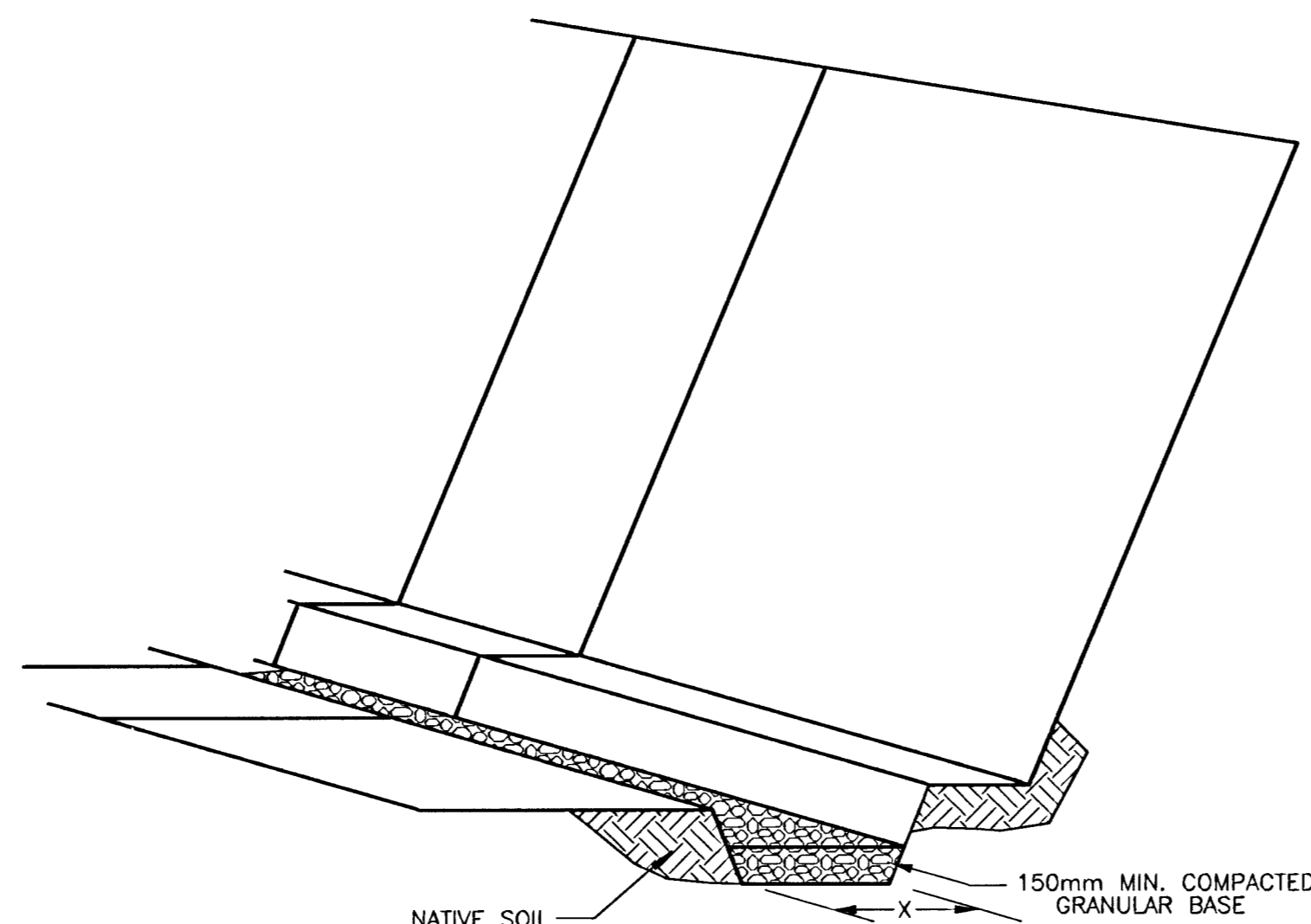
ANCHOR VERTICA - SURCHARGE BEHIND WALL



ANCHOR VERTICA - DIMENSIONS

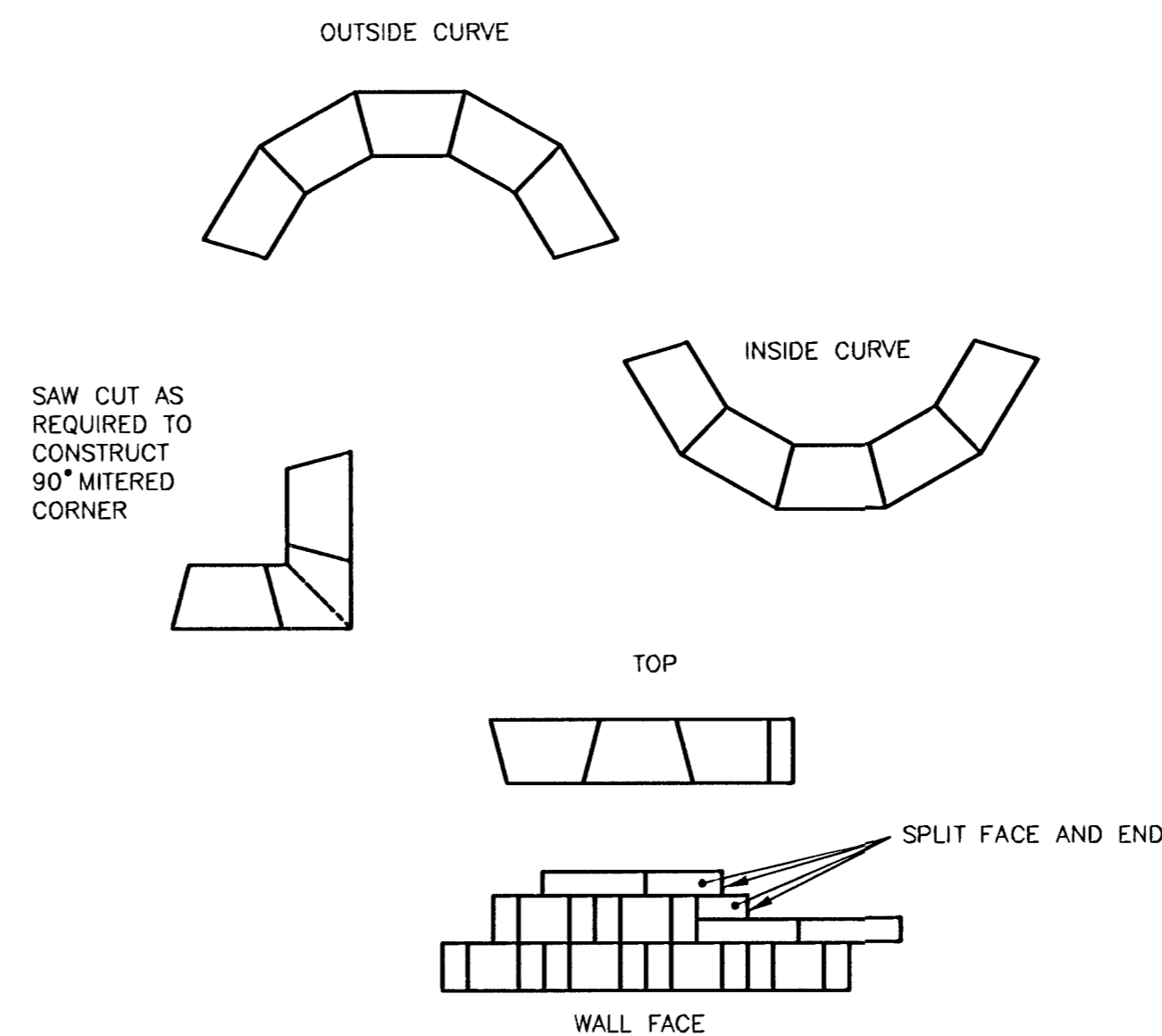


TYPICAL STEP-UP DETAIL  
(ALL PRODUCTS)



NOTE: X IS DEPENDENT ON ANCHOR PRODUCT USED.

TYPICAL BASE PREPARATION  
(ALL PRODUCTS)



- NOTES:
1. USE ADHESIVE TO SECURE CAPS IN PLACE
  2. ALTERNATE SHORT AND LONG CAP FACES EVERY OTHER CAP TO ACHIEVE A STRAIGHT WALL
  3. VARIOUS COMBINATIONS OF LONG AND SHORT CAP FACES WILL BE NECESSARY FOR RADII GREATER THAN THE MINIMUM
  4. CUT CAPS TO FIT
  5. ALWAYS START CAPPING WALL FROM LOWEST ELEVATION

ANCHOR VERTICA/VERTICA PRO  
DESIGN DETAILS - CAP BLOCK

ANCHOR WALL DESIGN DETAILS

STRUCTURE SUMMARY  
WALL TYPE: GRAVITY STRUCTURE  
ANCHOR WALL UNIT TYPE: ANCHOR VERTICA (8 in)  
CAP UNIT: YES  
REINFORCEMENT: NONE

DESIGN SUMMARY  
DESIGN METHOD: NCMA

SOIL DATA  
RETAINED SOIL: BROWN SILT LOAM  
LEVELING PAD SOIL: GRAVEL  
FOUNDATION SOIL: BROWN SILTY CLAY LOAM

ANCHOR WALL UNITS  
STANDARD UNITS  
UNIT HEIGHT (mm): 203  
UNIT WIDTH (mm): 292  
UNIT LENGTH (mm): 457.2  
SETBACK (mm): 14.27  
WEIGHT (infield) (kg): 56.7  
UNIT WEIGHT (infield) (kN/m<sup>3</sup>): 20.5  
CENTER OF GRAVITY (mm): 146.1

CAP UNITS  
UNIT HEIGHT (mm): 102  
UNIT WIDTH (mm): 254  
UNIT LENGTH (mm): 371.6  
SETBACK (mm): NONE  
WEIGHT (infield) (kg): 19.1  
UNIT WEIGHT (infield) (kN/m<sup>3</sup>): 19.48  
CENTER OF GRAVITY (mm): 127

NOTE: SIMILAR TYPE SEGMENTAL RETAINING WALL BY ALTERNATE MANUFACTURERS MAY BE USED WITH THE PERMISSION OF THE ENGINEER. CONTRACTOR MUST SUBMIT DESIGN CRITERIA AND DETAILS TO THE ENGINEER FOR REVIEW AND APPROVAL PRIOR TO CONSTRUCTION.

<b>K96 BIKEPATH - GROVE PARK TO OLIVER SEGMENTAL RETAINING WALL</b>	
<b>SRB</b>	324 NORTH MAIN WICHITA, KANSAS 67203 http://www.feist.com/~srb
316-264-0000 FAX 264-4621 E-Mail: srb@feist.com	REVISED
<b>SAVOY, RUGGLES &amp; BOHM, P.A.</b> ENGINEERING & SURVEYING	
PROJECT NUMBER	
DRAWN JTS	DESIGN TCR
REVIEW DATE June 27, 2001	SRB JOB 1554T
36	49