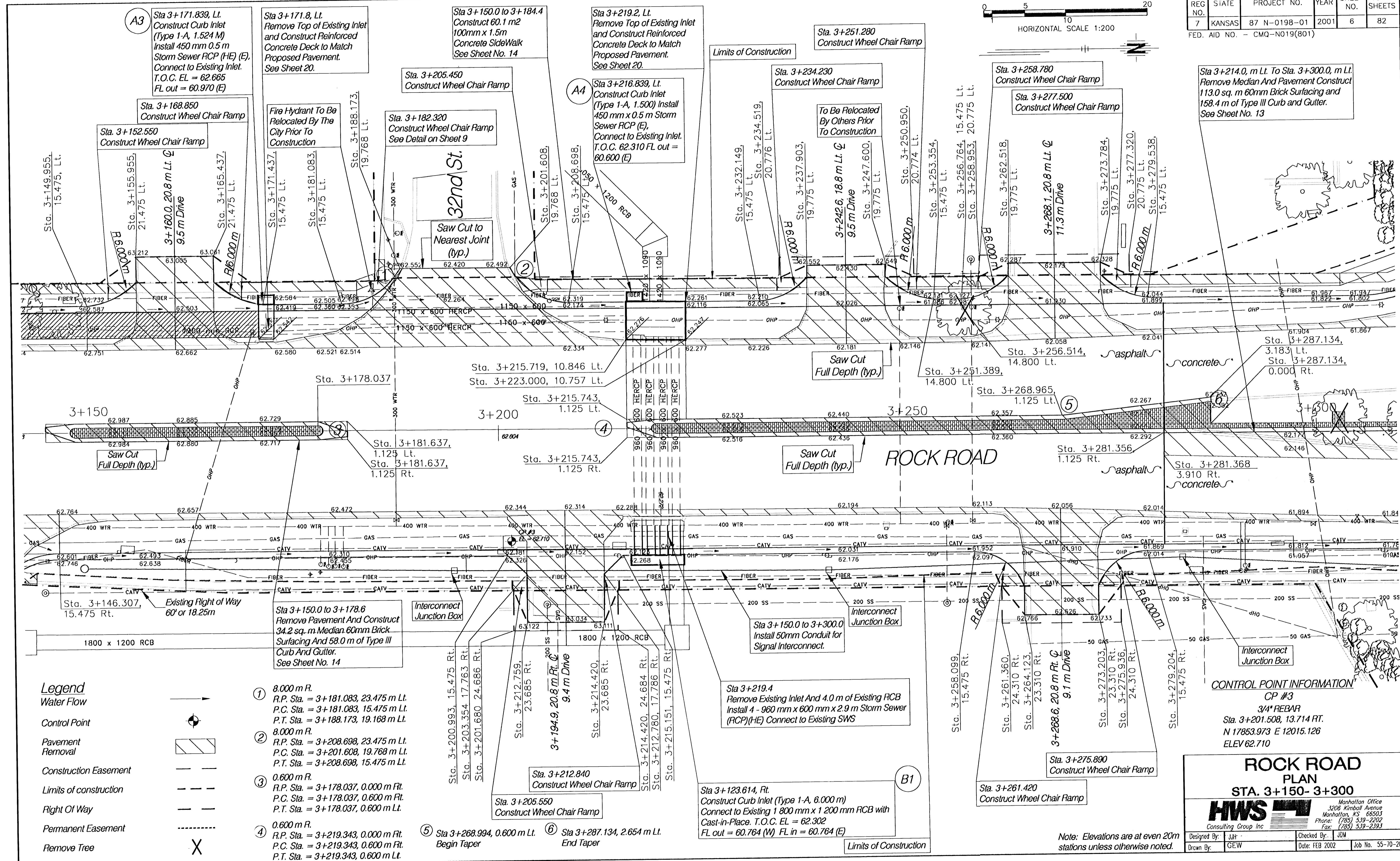
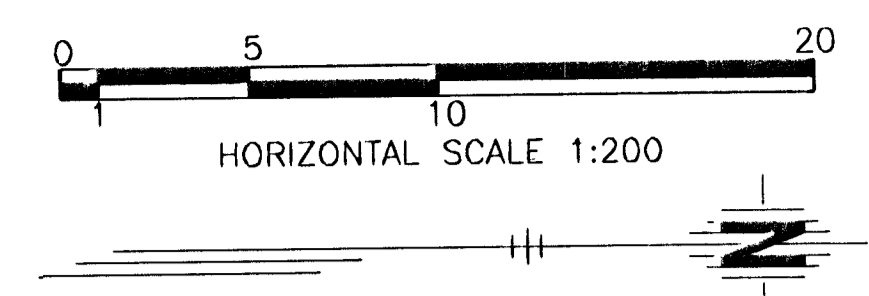


FHWA REG. NO.	STATE	PROJECT NO.	YEAR	SHEET NO.	TOTAL SHEETS
7	KANSAS	87 N-0198-01	2001	6	82

FED. AID NO. - CMQ-N019(801)



A3

Sta 3+171.839, Lt.
Construct Curb Inlet
(Type 1-A, 1.524 M)
Install 450 mm x 0.5 m
Storm Sewer RCP (HE) (E),
Connect to Existing Inlet.
T.O.C. EL = 62.665
FL out = 60.970 (E)

Sta 3+171.8, Lt.
Remove Top of Existing Inlet
and Construct Reinforced
Concrete Deck to Match
Proposed Pavement.
See Sheet 20.

Sta 3+150.0 to 3+184.4
Construct 60.1 m²
100mm x 1.5m
Concrete SideWalk
See Sheet No. 14

Sta 3+219.2, Lt.
Remove Top of Existing Inlet
and Construct Reinforced
Concrete Deck to Match
Proposed Pavement.
See Sheet 20.

Sta. 3+251.280
Construct Wheel Chair Ramp

Sta. 3+234.230
Construct Wheel Chair Ramp

Sta. 3+258.780
Construct Wheel Chair Ramp

Sta. 3+277.500
Construct Wheel Chair Ramp

Sta 3+214.0, m Lt. To Sta. 3+300.0, m Lt.
Remove Median And Pavement Construct
113.0 sq. m 60mm Brick Surfacing and
158.4 m of Type III Curb and Gutter.
See Sheet No. 13

A4

Sta 3+216.839, Lt.
Construct Curb Inlet
(Type 1-A, 1.500) Install
450 mm x 0.5 m Storm
Sewer RCP (E),
Connect to Existing Inlet.
T.O.C. 62.310 FL out =
60.600 (E)

Sta. 3+182.320
Construct Wheel Chair Ramp
See Detail on Sheet 9

Saw Cut to
Nearest Joint
(typ.)

To Be Relocated
By Others Prior
To Construction

Saw Cut
Full Depth (typ.)

Saw Cut
Full Depth (typ.)

Sta. 3+149.955,
15.475, Lt.

Sta. 3+168.850
Construct Wheel Chair Ramp

Sta. 3+152.550
Construct Wheel Chair Ramp

Fire Hydrant To Be
Relocated By The
City Prior To
Construction

Sta. 3+171.437,
15.475 Lt.

Sta. 3+181.083,
15.475 Lt.

Sta. 3+188.173,
19.768 Lt.

Sta. 3+205.450
Construct Wheel Chair Ramp

Sta. 3+201.608,
19.768 Lt.

Sta. 3+208.698,
15.475 Lt.

Sta. 3+234.519,
20.776 Lt.

Sta. 3+237.903,
19.775 Lt.

Sta. 3+242.6, 18.8 m Lt. ϕ

Sta. 3+247.600,
19.775 Lt.

Sta. 3+250.950,
20.774 Lt.

Sta. 3+253.354,
15.475 Lt.

Sta. 3+256.764,
15.475 Lt.

Sta. 3+258.953,
20.775 Lt.

Sta. 3+262.518,
19.775 Lt.

Sta. 3+273.784,
19.775 Lt.

Sta. 3+277.320,
20.775 Lt.

Sta. 3+279.538,
15.475 Lt.

3+150

3+200

3+250

3+300

Saw Cut
Full Depth (typ.)

Sta. 3+181.637,
1.125 Lt.
Sta. 3+181.637,
1.125 Rt.

Sta. 3+215.743,
1.125 Lt.
Sta. 3+215.743,
1.125 Rt.

Saw Cut
Full Depth (typ.)

Sta. 3+251.389,
14.800 Lt.

Sta. 3+256.514,
14.800 Lt.

Sta. 3+268.965,
1.125 Lt.

Sta. 3+287.134,
3.183 Lt.
Sta. 3+287.134,
0.000 Rt.

Sta. 3+281.356,
1.125 Rt.

Sta. 3+281.368,
3.910 Rt.

Sta. 3+146.307,
15.475 Rt.

Existing Right of Way
60' or 18.25m

Sta 3+150.0 to 3+178.6
Remove Pavement And Construct
34.2 sq. m Median 60mm Brick
Surfacing And 58.0 m of Type III
Curb And Gutter.
See Sheet No. 14

Interconnect
Junction Box

Sta 3+219.4
Remove Existing Inlet And 4.0 m of Existing RCB
Install 4 - 960 mm x 600 mm x 2.9 m Storm Sewer
(RCP)(HE) Connect to Existing SWS

Sta 3+150.0 to 3+300.0
Install 50mm Conduit for
Signal Interconnect.

Legend

Water Flow

Control Point

Pavement
Removal

Construction Easement

Limits of construction

Right Of Way

Permanent Easement

Remove Tree

① 8.000 m R.
R.P. Sta. = 3+181.083, 23.475 m Lt.
P.C. Sta. = 3+181.083, 15.475 m Lt.
P.T. Sta. = 3+188.173, 19.168 m Lt.

② 8.000 m R.
R.P. Sta. = 3+208.698, 23.475 m Lt.
P.C. Sta. = 3+201.608, 19.768 m Lt.
P.T. Sta. = 3+208.698, 15.475 m Lt.

③ 0.600 m R.
R.P. Sta. = 3+178.037, 0.000 m Rt.
P.C. Sta. = 3+178.037, 0.600 m Rt.
P.T. Sta. = 3+178.037, 0.600 m Lt.

④ 0.600 m R.
R.P. Sta. = 3+219.343, 0.000 m Rt.
P.C. Sta. = 3+219.343, 0.600 m Rt.
P.T. Sta. = 3+219.343, 0.600 m Lt.

Sta. 3+200.993, 15.475 Rt.
Sta. 3+203.354, 17.763 Rt.
Sta. 3+201.680, 24.686 Rt.

Sta. 3+212.759,
23.685 Rt.
Sta. 3+214.420,
23.685 Rt.

Sta. 3+214.420, 24.684 Rt.
Sta. 3+212.780, 17.786 Rt.
Sta. 3+215.151, 15.475 Rt.

Sta. 3+212.840
Construct Wheel Chair Ramp

Sta. 3+205.550
Construct Wheel Chair Ramp

Sta 3+123.614, Rt.
Construct Curb Inlet (Type 1-A, 6.000 m)
Connect to Existing 1 800 mm x 1 200 mm RCB with
Cast-in-Place. T.O.C. EL = 62.302
FL out = 60.764 (W) FL in = 60.764 (E)

Sta. 3+261.420
Construct Wheel Chair Ramp

Sta. 3+275.890
Construct Wheel Chair Ramp

CONTROL POINT INFORMATION
CP #3
3/4" REBAR
Sta. 3+201.508, 13.714 Rt.
N 17853.973 E 12015.126
ELEV 62.710

ROCK ROAD
PLAN
STA. 3+150- 3+300

HWS
Consulting Group Inc.
Manhattan Office
3208 Kimball Avenue
Manhattan, KS 66503
Phone: (785) 539-2202
Fax: (785) 539-2393

Note: Elevations are at even 20m
stations unless otherwise noted.

Designed By: JHT
Checked By: JDM
Drawn By: GEW
Date: FEB 2002
Job No. 55-70-2003