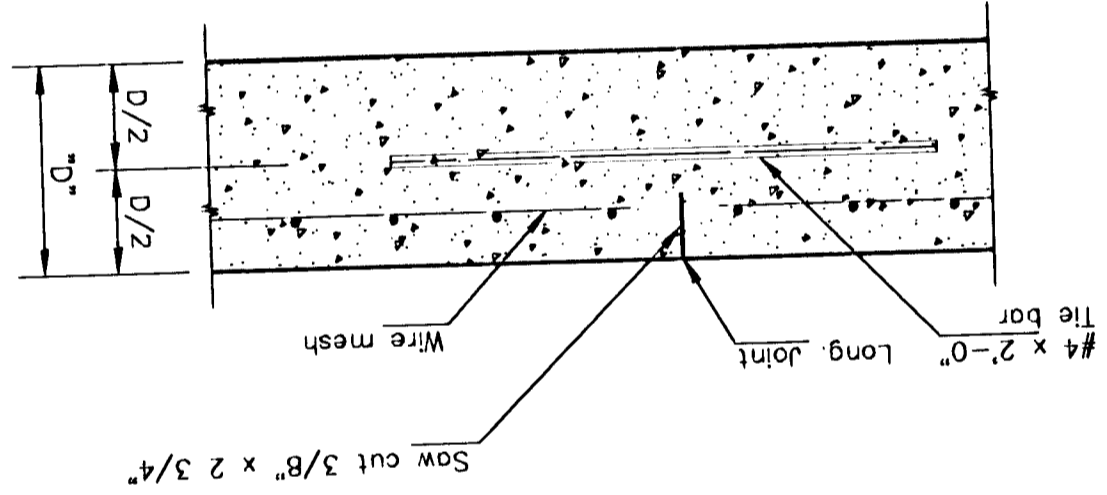


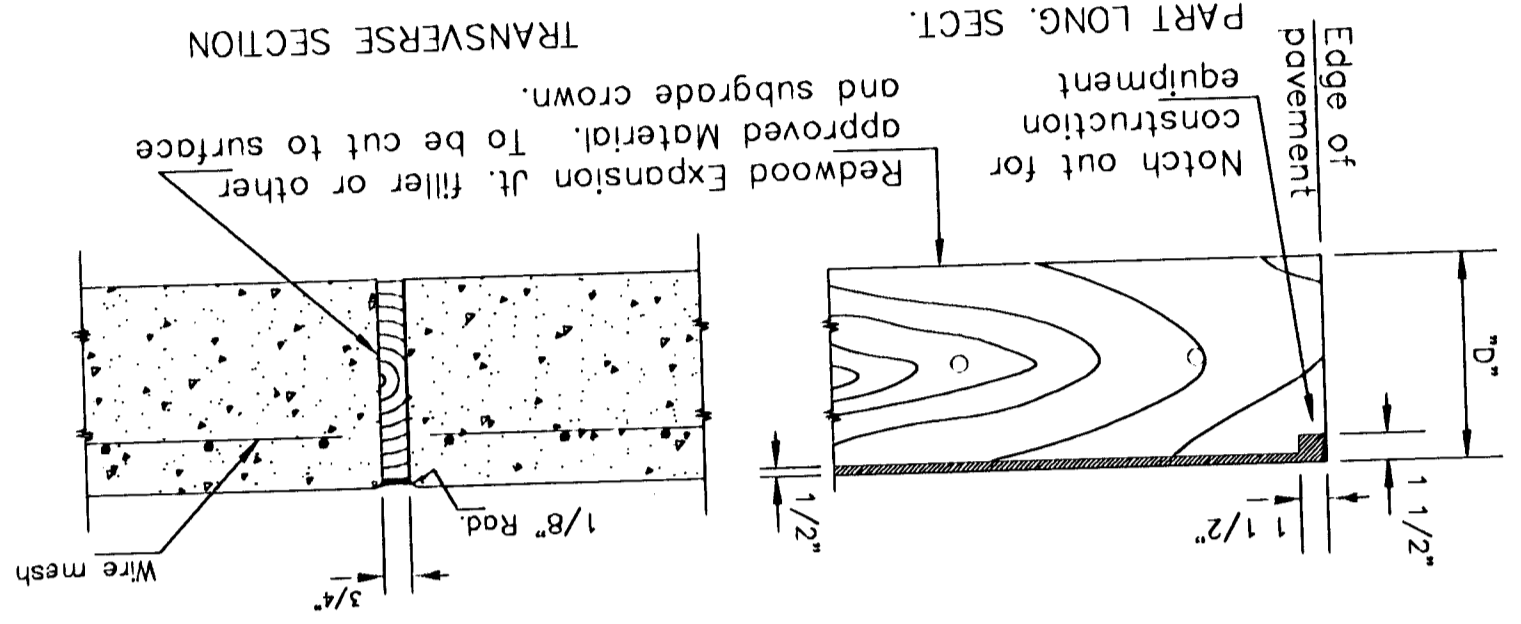
NOTE: The lap shall extend beyond the first transverse wire of each sheet. The sheets shall be wired securely at the edges and at intervals not to exceed 2'-6\"/>

Other methods for fastening the sheets of wire mesh at the laps may be used with the approval of the Engineer.

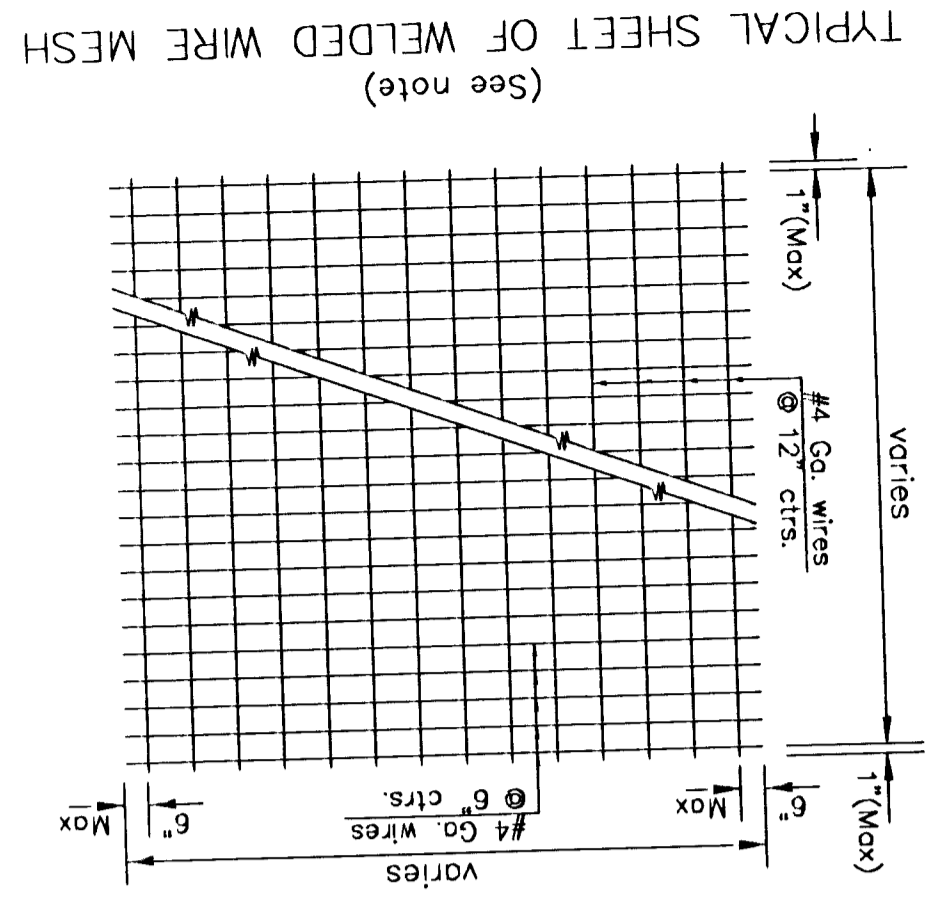
NOTE: CONTRACTION JOINTS AND EXPANSION JOINTS SHALL BE FORMED IN THE MONOLITHIC CURB AT ALL LOCATIONS WHERE SUCH JOINTS ARE PLACED IN THE PAVEMENT. ADDITIONAL CONTRACTION JOINTS SHALL BE CUT IN THE MONOLITHIC CURB IN UNIFORM LENGTHS NOT EXCEEDING TEN FOOT INTERVALS BETWEEN THOSE JOINTS WHICH COINCIDE WITH JOINTS IN THE PAVEMENT.



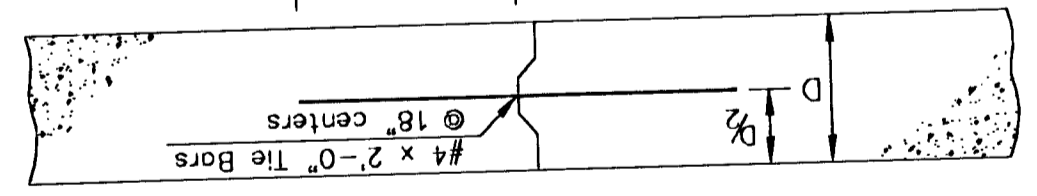
NOTE: Longitudinal joint formed by sawing 2 3/4\"/>



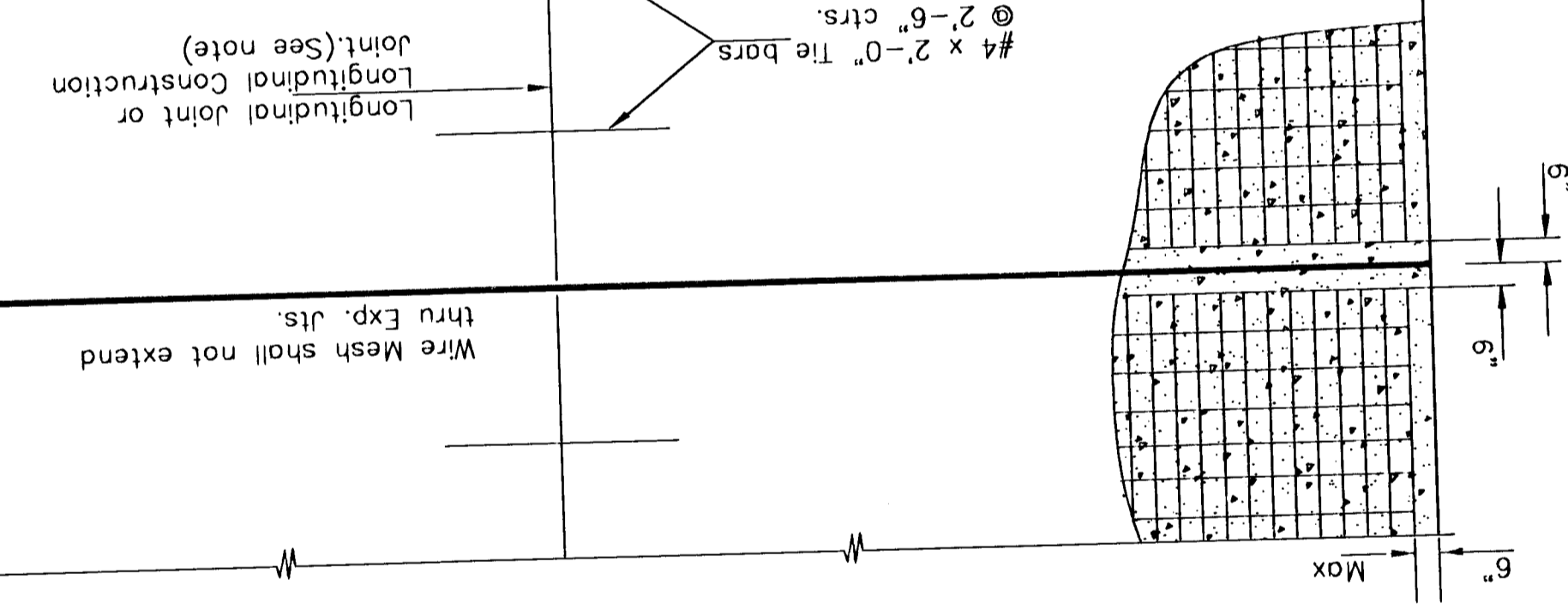
NOTE: EXPANSION JOINT MATERIAL MUST BE SECURELY HELD IN PLACE BY USING METAL STAKES, METAL PINS, OR BY OTHER APPROVED METHODS SO THAT WHEN THE PAVEMENT IS COMPLETED THE EXPANSION MATERIAL WILL BE PERPENDICULAR TO THE SURFACE OF THE COMPLETED PAVEMENT. CONCRETE SHALL BE HAND PLACED ON EACH SIDE OF THE EXPANSION JOINT MATERIAL IN A MANNER THAT WILL PRECLUDE DISPLACEMENT OF THE EXPANSION JOINT MATERIAL.



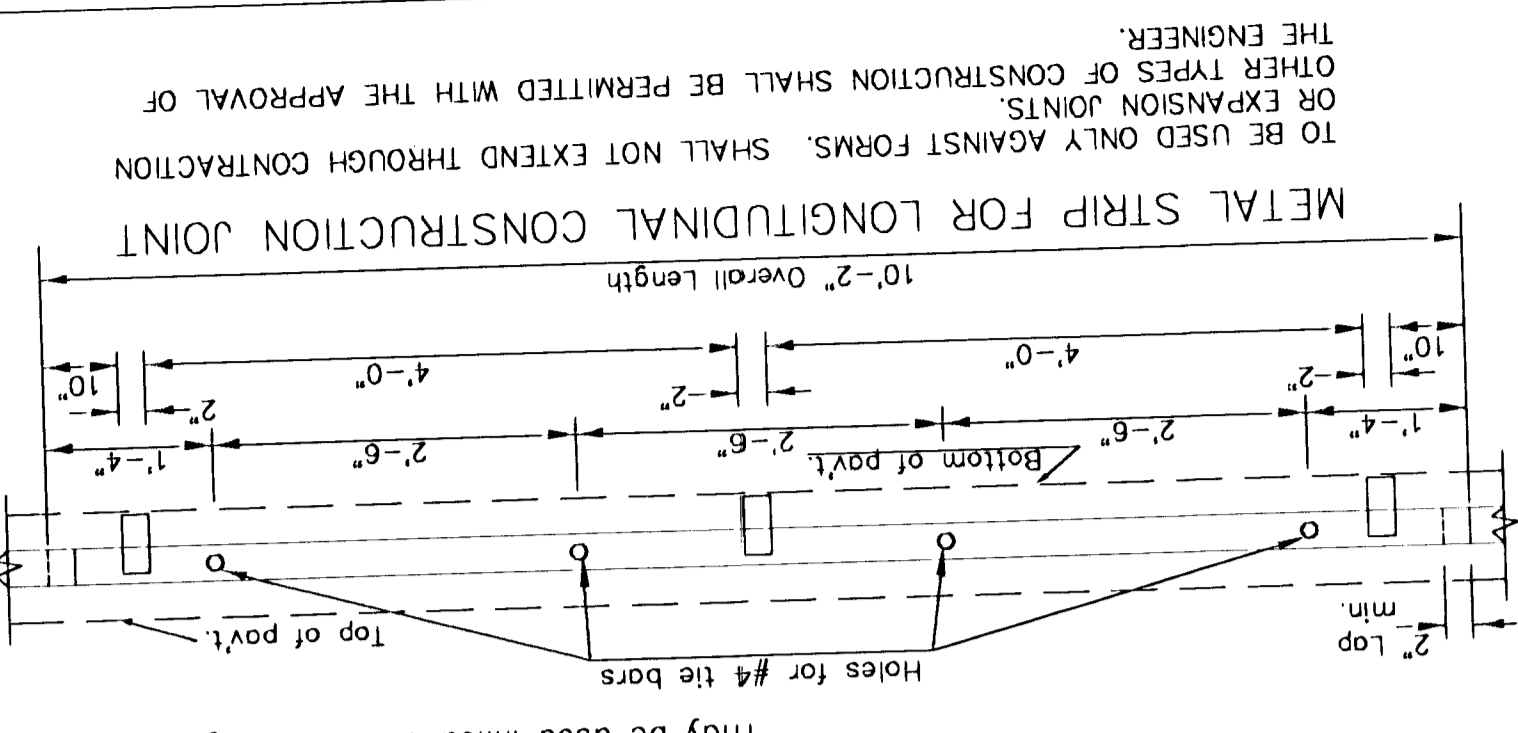
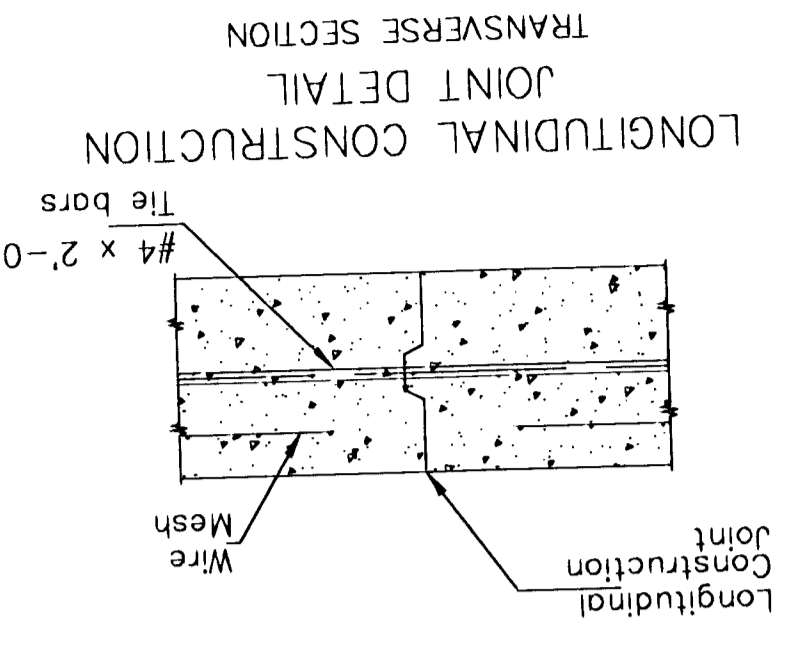
(See note)



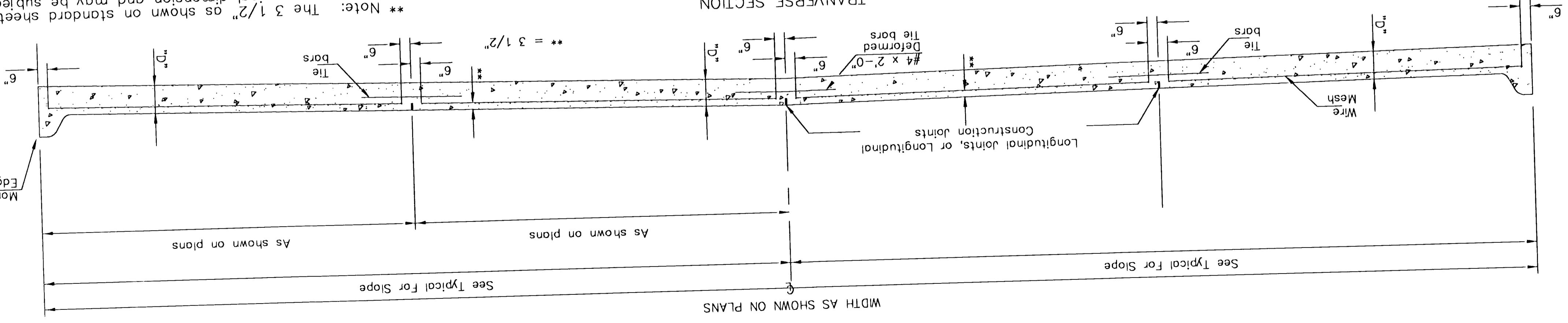
NOTE: A Construction joint is required when the pour has been interrupted for a substantial length of time or at the end of a days pour. Transverse Construction joints shall be sawed and filled as specified for contraction joints.



For additional Expansion Jt. details see separate sheets. #4 x 2-0\"/>



TO BE USED ONLY AGAINST FORMS. SHALL NOT EXTEND THROUGH CONTRACTION OR EXPANSION JOINTS. OTHER TYPES OF CONSTRUCTION SHALL BE PERMITTED WITH THE APPROVAL OF THE ENGINEER.



\*\* Note: The 3 1/2\"/>

Expansion joints are not to be used unless otherwise shown on the plans.

Construction Jts. spaced as shown on plans.

**THE CITY OF WCHITA**

CITY ENGINEER'S OFFICE  
CITY HALL - SEVENTH STREET  
MICHIGAN KANSAS 67202  
(316) 266-4114 FAX  
(316) 266-4501

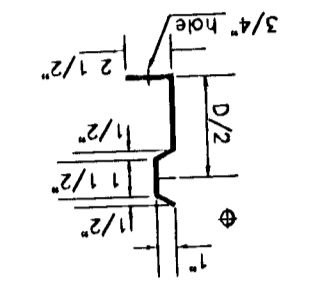
---

M. E. LINDBAK P.E. - CITY ENGINEER

PROJECT NUMBER \_\_\_\_\_ INDEX CODE \_\_\_\_\_

DATE MAR 96 SHEET 11 OF 82

SECTION OF RECESSED FORM LEG



CONCRETE PAVEMENT DETAILS