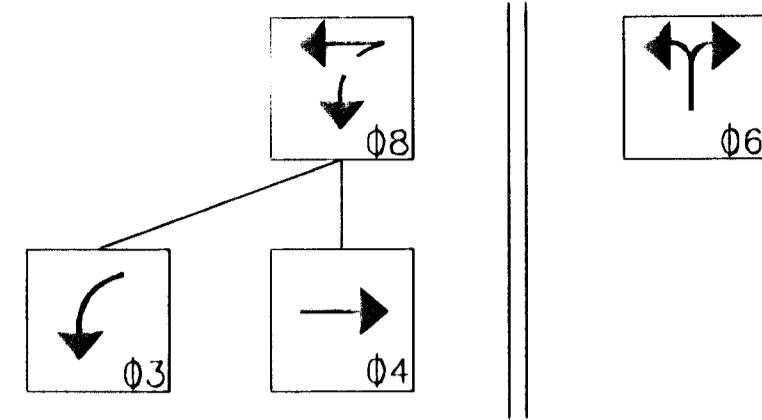


ROCK ROAD PLAN S005.DWG

FHWA REG NO.	STATE	PROJECT NO.	YEAR	SHEET NO.	TOTAL SHEETS
7	KANSAS	87 N-0198-01	2001	26	82

FED. AID NO. - CMQ-N019(801)

SIGNAL PHASING



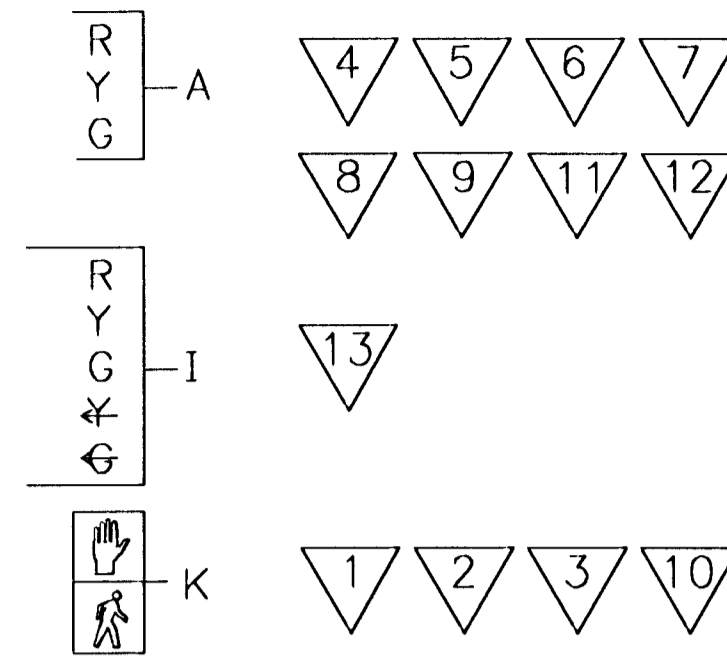
GENERAL NOTE:

----- INDICATES NON-CONFLICTING PHASE THAT MAY TIME CONCURRENTLY.

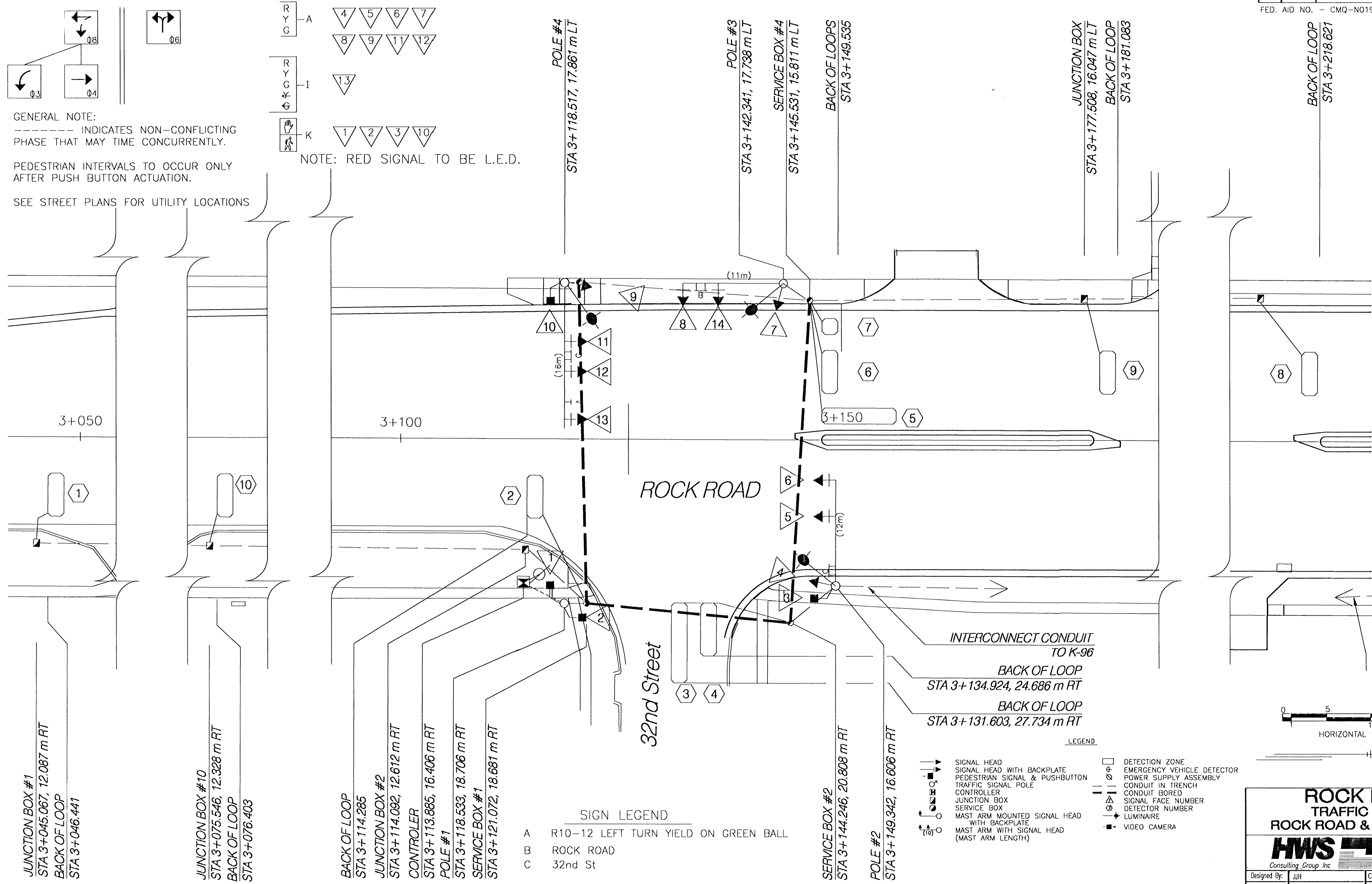
PEDESTRIAN INTERVALS TO OCCUR ONLY AFTER PUSH BUTTON ACTUATION.

SEE STREET PLANS FOR UTILITY LOCATIONS

TYPE SIGNAL FACES



NOTE: RED SIGNAL TO BE L.E.D.



JUNCTION BOX #1
STA 3+045.067, 12.087 m RT
BACK OF LOOP
STA 3+046.441

JUNCTION BOX #10
STA 3+075.546, 12.328 m RT
BACK OF LOOP
STA 3+076.403

BACK OF LOOP
STA 3+114.285
JUNCTION BOX #2
STA 3+114.092, 12.612 m RT
CONTROLLER
STA 3+113.885, 16.406 m RT
POLE #1
STA 3+118.533, 18.706 m RT
SERVICE BOX #1
STA 3+121.072, 18.681 m RT

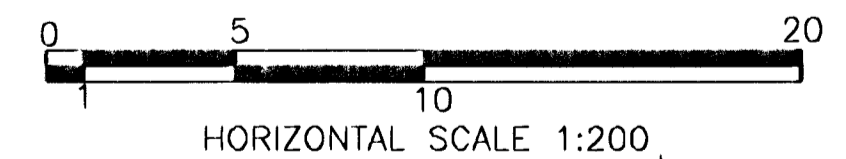
- SIGN LEGEND
- A R10-12 LEFT TURN YIELD ON GREEN BALL
 - B ROCK ROAD
 - C 32nd St

SERVICE BOX #2
STA 3+144.246, 20.808 m RT
POLE #2
STA 3+149.342, 16.606 m RT

INTERCONNECT CONDUIT TO K-96
BACK OF LOOP
STA 3+134.924, 24.686 m RT
BACK OF LOOP
STA 3+131.603, 27.734 m RT

LEGEND

- SIGNAL HEAD
- SIGNAL HEAD WITH BACKPLATE
- ⊕ PEDESTRIAN SIGNAL & PUSHBUTTON
- ⊖ TRAFFIC SIGNAL POLE
- CONTROLLER
- JUNCTION BOX
- SERVICE BOX
- MAST ARM MOUNTED SIGNAL HEAD WITH BACKPLATE
- MAST ARM WITH SIGNAL HEAD (MAST ARM LENGTH)
- DETECTION ZONE
- ⊕ EMERGENCY VEHICLE DETECTOR
- ⊖ POWER SUPPLY ASSEMBLY
- CONDUIT IN TRENCH
- CONDUIT BORED
- △ SIGNAL FACE NUMBER
- ⊕ DETECTOR NUMBER
- ⊖ LUMINAIRE
- VIDEO CAMERA



ROCK ROAD TRAFFIC SIGNAL
ROCK ROAD & 32nd STREET

HWS Consulting Group Inc.
Manhattan Office
3206 Kimball Avenue
Manhattan, KS 66503
Phone: (785) 539-2202
Fax: (785) 539-2393

Designed By: JJJ Checked By: JDM
Drawn By: BJD Date: 11/14/01 Job No. 55-70-2003