

GENERAL NOTES:

- Contractor will be required to provide notice to utility companies a minimum of forty-eight (48) hours prior to any excavation, as follows:
 Kansas One-Call 687-2470
 The Contractor must notify the following in case of an emergency:
 Cox Communications 262-4270
 Kansas Gas Service 1-888-482-4950
 Westar Energy 383-8650
 Aquila Energy 1-800-303-0357
 ATT 268-2245
 City of Wichita Water Dept. 268-4563
 City of Wichita Sewer Maint. 268-4024
 City of Wichita Storm Sewer Maint. 268-4090
 City of Wichita Traffic Maint. 268-4034
 Conoco Phillips Pipeline Co. 1-877-267-2290
 Southern Star Pipeline Co. 529-6600
 Kinder-Morgan Pipeline Co. 1-888-844-5658

- The Developer for this project is Jay Russell (316) 722-2417.
- Excess excavation shall be stockpiled or spread on-site at a location determined by the Developer or Design Engineer.

- Utility service lines, poles, valve boxes, meters, and etcetera are to be adjusted as necessary by others prior to construction unless the plans specifically call for their adjustment by the Contractor or unless the plans specifically identify a utility to be adjusted by its owner during construction. Existing utilities and their location, as shown on the plans, represent the best information obtainable for design. The Contractor will be required to work around existing utilities within the right-of-way which do not conflict with proposed construction.
- Rubble from the removal of miscellaneous structures and excess excavation which is to be wasted shall be disposed of on sites to be provided by the Contractor. These sites shall be approved by the Engineer as to suitability, appearance and site location. Locations, in the opinion of the Engineer, that will leave an unsightly appearance will not be approved. All disposal sites must be approved by the Kansas Department of Health and Environment. Material either stockpiled or disposed of in a flood plain would require a Kansas State Board of Agriculture permit. Any material dumped in waters of the United States or wetlands is subject to U.S. Corps of Engineers permitting regulations. Any material buried or stockpiled beyond approved construction limits would require additional archaeological investigations unless buried in a previously approved borrow location.

- Trees and shrubs in public right-of-way which are in direct conflict with proposed new construction shall be removed by the Contractor ONLY with the Developer or Baughman Company approval. Trees and shrubs which are not in direct conflict with proposed new construction shall be saved and protected from damage.
- The Contractor shall give all property owners and/or tenants of developed property abutting the construction of this project a minimum of ten (10) days notice prior to start of construction.

- The Contractor shall be responsible for preserving property irons. The Contractor will be required to re-establish any property irons which are damaged or destroyed by his construction operations. Such irons shall be re-established by a licensed Land Surveyor in accordance with state laws.
- All existing and proposed erosion control measures including silt fencing, erosion control mat, straw bales, inlet barriers, and const. entrances shall be maintained throughout construction by the Contractor and until project is accepted by the City of Wichita. The on-site Engineer shall complete weekly reports on the status of erosion control measures. The Contractor shall be required to comply with maintenance and/or replacement of erosion control measures as determined by the on-site Engineer until project is accepted by City of Wichita.

- A saw cut of at least one-half the depth of existing surface courses or one-fourth the depth of the existing total pavement thickness shall be provided at locations where proposed construction abuts the existing surface course or pavement for which partial removal of that surface or pavement is required. Sawed joint to facilitate removal within three (3) feet of existing joints will not be permitted and for such instances the limits of removal shall extend to the existing joint. Such saw cuts will not be paid for directly and this cost shall be considered as subsidiary to the removal of the surface or pavement.

- All areas disturbed during construction shall be seeded as noted on the Erosion Control Plan (see Seeding Table, Sheet 36). Contractor shall prepare ground per City of Wichita Specifications. All costs associated with seeding shall be included in bid item "Project Seeding"

- The Contractor shall adjust valve boxes as necessary to match proposed grade. Cost to be included in bid item, "Site Restoration."

- The Contractor shall drain any standing water in sump areas of the proposed pavement. Contractor shall overexcavate and recompact these areas as required to maintain compaction of 95% Standard Proctor Density. Cost to be incidental to pavement.

STREET PAVING AND INCIDENTAL STORM WATER SEWER FOR SANDCREST ST

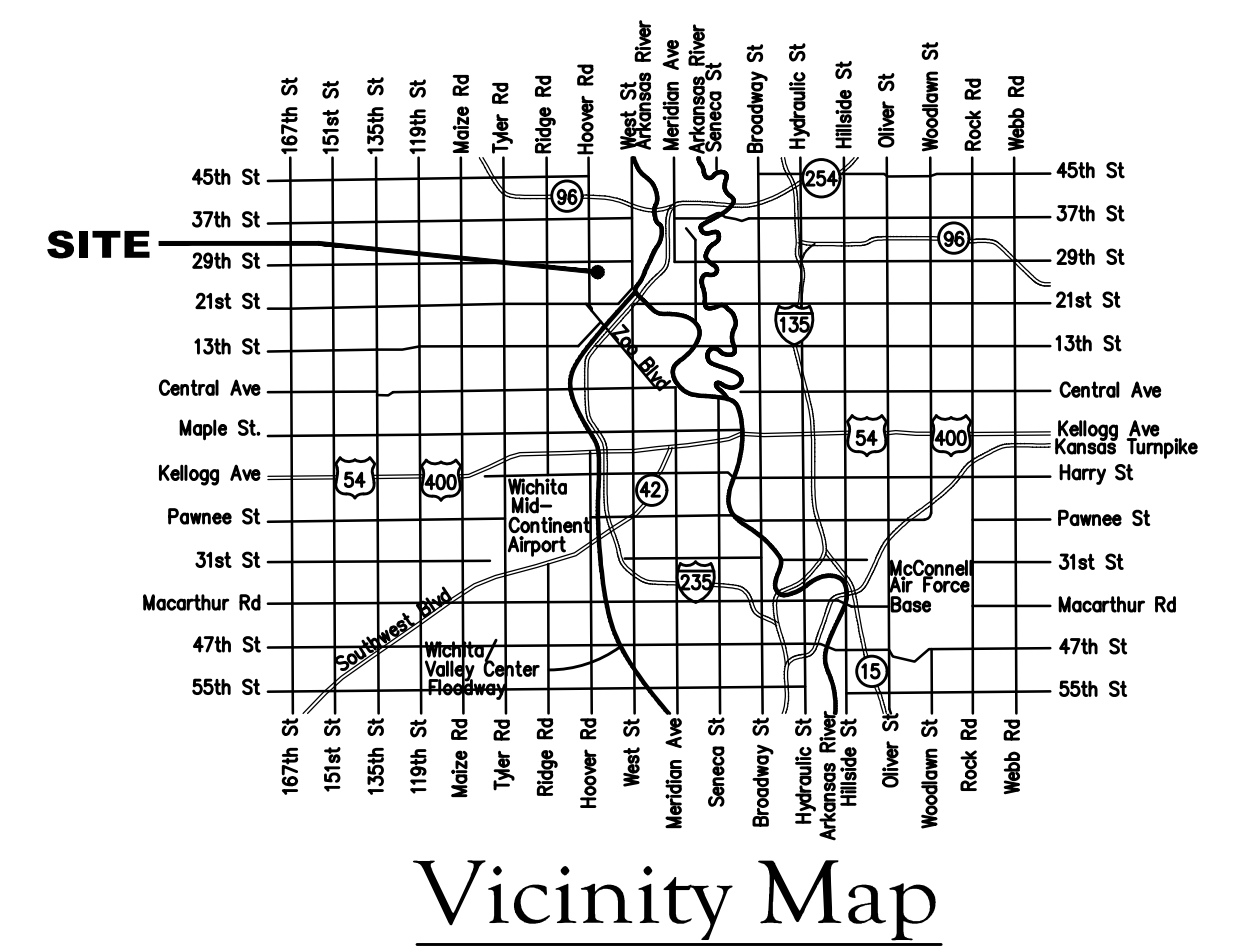
to serve

SANDCREST ADDITION - PHASE I

Sandcrest St. from Hoover Rd. east to the west line Curtis St.
 Curtis St. from the south line of Reserve D, north to 29th St. N.
 Gulf Breeze St. and Gulf Breeze Cir. from west line of Curtis St. northwest and west to and including the cul-de-sac
 Gulf Breeze Ct. from the north line of Gulf Breeze St. east to and including the cul-de-sac
 Wavercrest Cir. from the east line of Curtis St. east to the south line of Lot 21, Block B

CITY OF WICHITA, KANSAS

Gary Janzen, P.E. City Engineer
 Project Number 472-85252
 OCA Number 766366

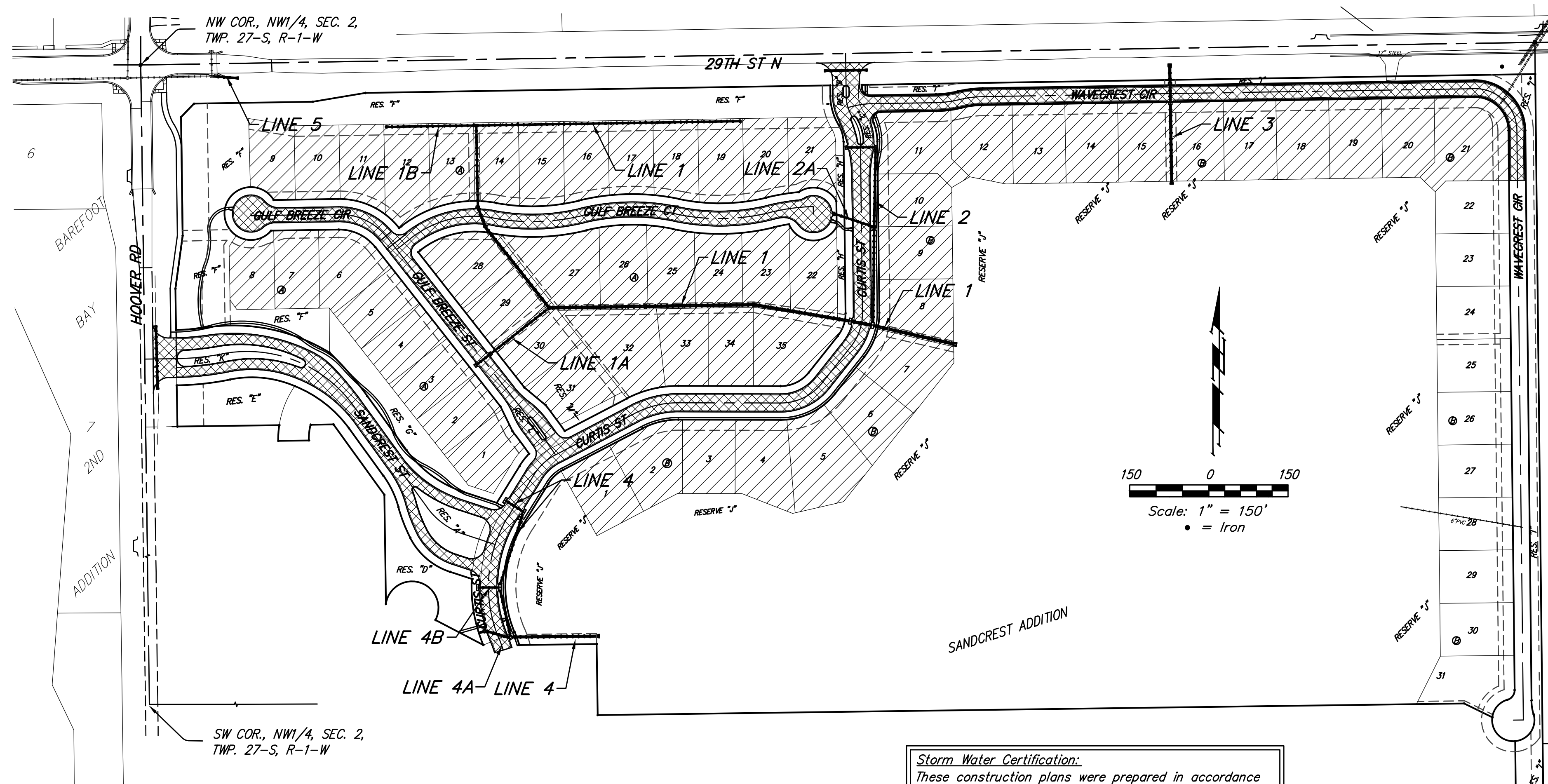


BENCHMARKS

CITY OF WICHITA BENCHMARK DISK
 34.9' S. & 31.2' W. OF THE SW COR.,
 NW1/4, SEC. 2, TWP. 27-S, R-1-W.
 ELEV. = 1327.57 NAVD88

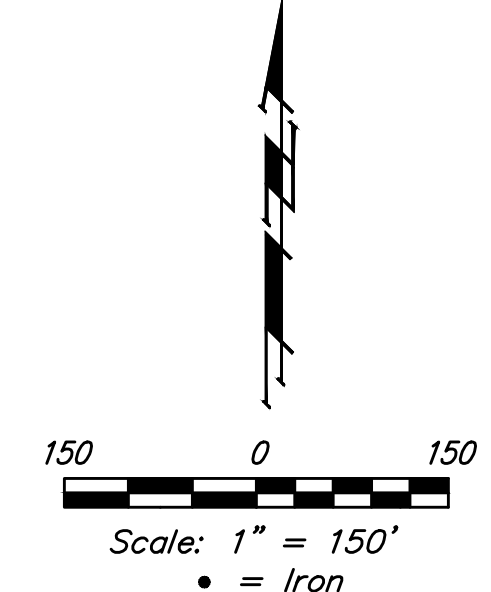
CITY OF WICHITA BENCHMARK DISK
 26.2' S. & 46.1' W. OF THE NW COR.,
 NW1/4, SEC. 2, TWP. 27-S, R-1-W.
 ELEV. = 1330.50 NAVD88

CITY OF WICHITA BENCHMARK DISK
 0.9' E. & 29' N. OF THE NE COR.,
 NW1/4, SEC. 2, TWP. 27-S, R-1-W.
 ELEV. = 1325.19 NAVD88



SHEET INDEX

Title Sheet	1
Asphalt Paving Detail	2
Curb & Gutter Details	3
Sign Details	4
Valley Gutter Details	5
Pavement Underdrain Details	6
Sandcrest ST	7-8
Gulf Breeze CT	9-11
Gulf Breeze CIR	12
Gulf Breeze ST	13
Curtis ST	14-18
Wavercrest Cir	19-22
SWS Line 1	23-28
SWS Line 1A & Line 1B	29
SWS Line 2 & Line 2A	30
SWS Line 3	31
SWS Line 4 & Line 4A	32
SWS Line 4 & Line 4B	33
SWS Line 5	34
Mass Grading/Erosion Control Plan	35-36
Erosion Control BMP Details	37-41
Std. Type 1A Curb Inlet Detail	42
Backyard Inlet Detail	43
Precast Manhole Detail	44
Single/Double Drop Inlet Detail	45
Frame and Cover Details	46
Cross Sections	47-62
Coordinate Sheet	63-64
Copy of Plat	65-66



Project Earthwork Totals (CY unadjusted)			
	Excavation	Compacted Fill	Loose Fill (not a bid item)
Mass Grading	97,883		32,934
Street (R/W)	17,261	7,563	7,336
Project Total	114,507	7,563	42,270
Total Project Length			
5,280 L.F. = 1.00 Miles			

Storm Water Certification:
 These construction plans were prepared in accordance with the current Storm Water Management Regulations as set forth in the City of Wichita's Storm Water Management Ordinance 16.32 and the policies/guidelines presented in the Wichita/Sedgwick County Storm Water Manual.
 Disturbed Area = 36.0 ac.
 Water Quality Treatment: Provided by snouts and sump inlets.
 Downstream Channel Protection: Provided for by the existing non-discharging sand pit.

Proposed Streets:

Benefit District:



Baughman Company, P.A. 315 Ellis St. Wichita, KS 67211 P 316-262-7271 F 316-262-0149
 ENGINEERING | SURVEYING | PLANNING | LANDSCAPE ARCHITECTURE

