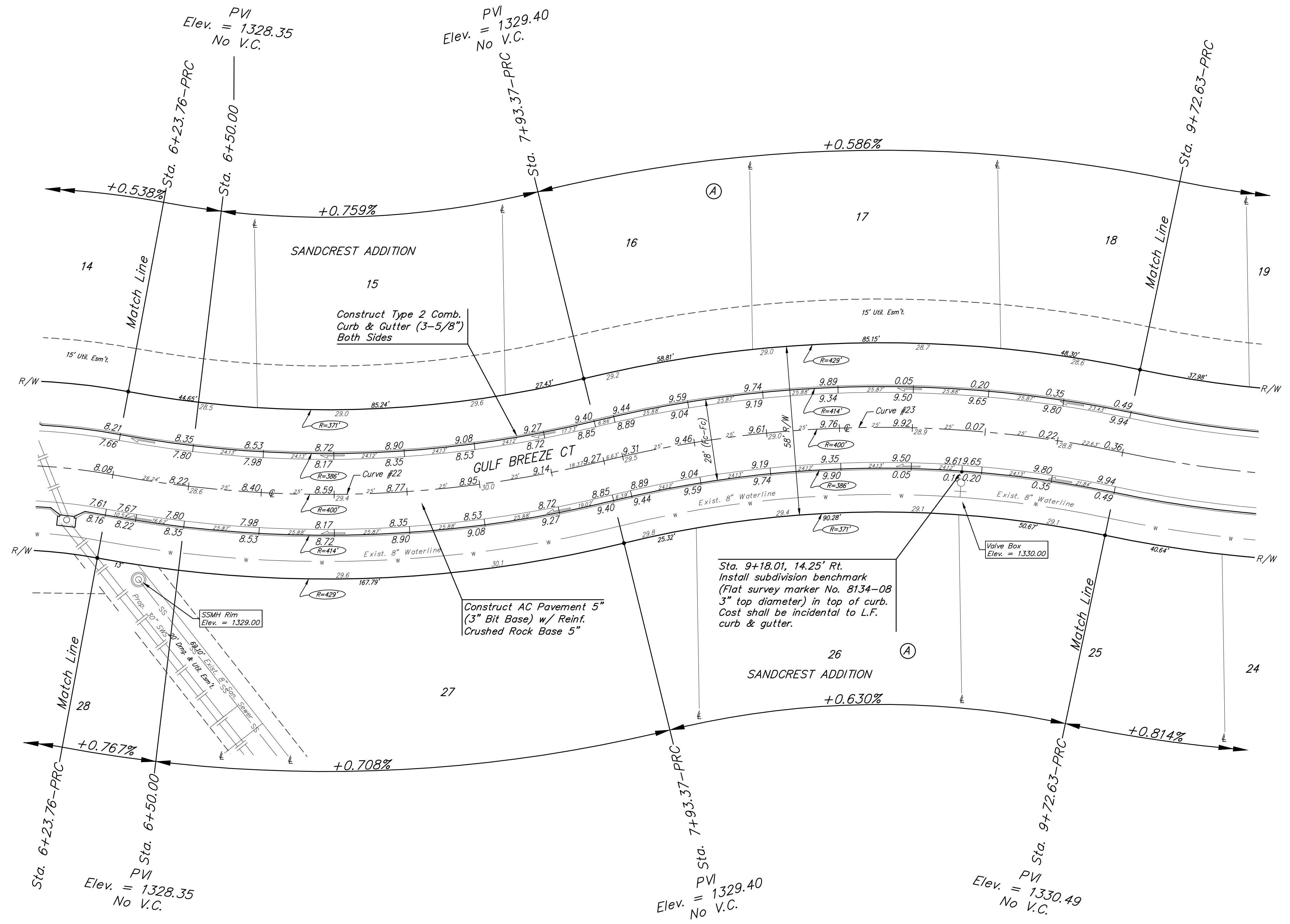
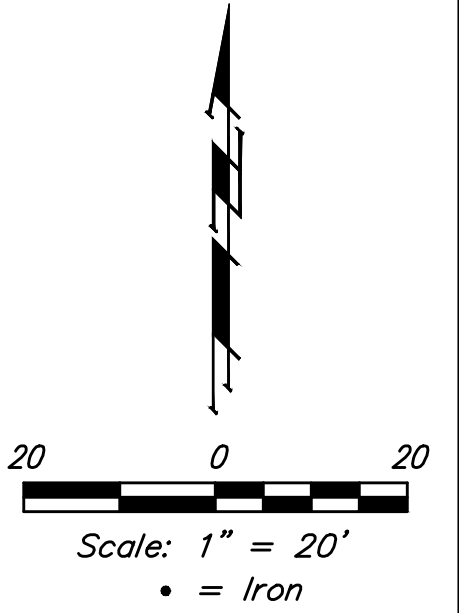


BENCHMARKS:
 CITY OF WICHITA BENCHMARK DISK
 34.9' S. & 31.2' W. OF THE SW COR.,
 NW1/4, SEC. 2, TWP. 27-S, R-1-W.
 ELEV. = 1327.57 NAVD88

CITY OF WICHITA BENCHMARK DISK
 26.2' S. & 46.1' W. OF THE NW COR.,
 NW1/4, SEC. 2, TWP. 27-S, R-1-W.
 ELEV. = 1330.50 NAVD88

CITY OF WICHITA BENCHMARK DISK
 0.9' E. & 29' N. OF THE NE COR.,
 NW1/4, SEC. 2, TWP. 27-S, R-1-W.
 ELEV. = 1325.19 NAVD88



Curve #22
 Curve Data Based on Centerline
 Rad. = 400' Delta = 241°46' Tangent = 86.16'
 Arc = 169.61' L.C. = 168.35' Def./Ft. = 4.29741 Min.

Station	Arc	Chord		Defl.	Total Defl.
		8' Left	8' Right		
6+23.76	-	-	-	0°00'00"	0°00'00"
6+25.00	1.24'	1.17'	1.31'	0°05'20"	0°05'20"
6+50.00	25.00'	23.62'	26.37'	1°47'26"	1°52'46"
6+75.00	25.00'	23.62'	26.37'	1°47'26"	3°40'12"
7+00.00	25.00'	23.62'	26.37'	1°47'26"	5°27'38"
7+25.00	25.00'	23.62'	26.37'	1°47'26"	7°15'04"
7+50.00	25.00'	23.62'	26.37'	1°47'26"	9°02'30"
7+75.00	25.00'	23.62'	26.37'	1°47'26"	10°49'56"
7+93.37	18.37'	17.36'	19.38'	1°18'57"	12°08'53"

Curve #23
 Curve Data Based on Centerline
 Rad. = 400' Delta = 25°40'38" Tangent = 91.16'
 Arc = 179.26' L.C. = 177.76' Def./Ft. = 4.29720 Min.

Station	Arc	Chord		Defl.	Total Defl.
		8' Left	8' Right		
7+93.37	-	-	-	0°00'00"	0°00'00"
8+00.00	6.63'	6.99'	6.27'	0°28'29"	0°28'29"
8+25.00	25.00'	26.37'	23.62'	1°47'26"	2°15'55"
8+50.00	25.00'	26.37'	23.62'	1°47'26"	4°03'21"
8+75.00	25.00'	26.37'	23.62'	1°47'26"	5°50'47"
9+00.00	25.00'	26.37'	23.62'	1°47'26"	7°38'13"
9+25.00	25.00'	26.37'	23.62'	1°47'26"	9°25'38"
9+50.00	25.00'	26.37'	23.62'	1°47'26"	11°13'04"
9+72.63	22.63'	23.87'	21.38'	1°37'15"	12°50'19"

Roll type curb & gutter to be constructed on the pavement on this sheet.
 Top of curb elevation are given for full height curb.

Baughman Sandcrest Addition - Phase I
GULF BREEZE CT
 Sta. 6+23.76 to Sta. 9+72.63

Baughman Company, P.A. 315 Ellis St. Wichita, KS 67211 P 316-262-7271 F 316-262-0149
 ENGINEERING | SURVEYING | PLANNING | LANDSCAPE ARCHITECTURE

PROJECT NUMBER 472-85252	DESIGN AEG	DRAWN JAK
REVISIONS:	APPROVED	DATE 7/19/16
SCALE Noted		SHEET 10 OF 66

E:\Projects\Pearl Beach_1202\F860\Engineering\Phase I\Str_1510E318\STR_Plan_Sht.dwg

