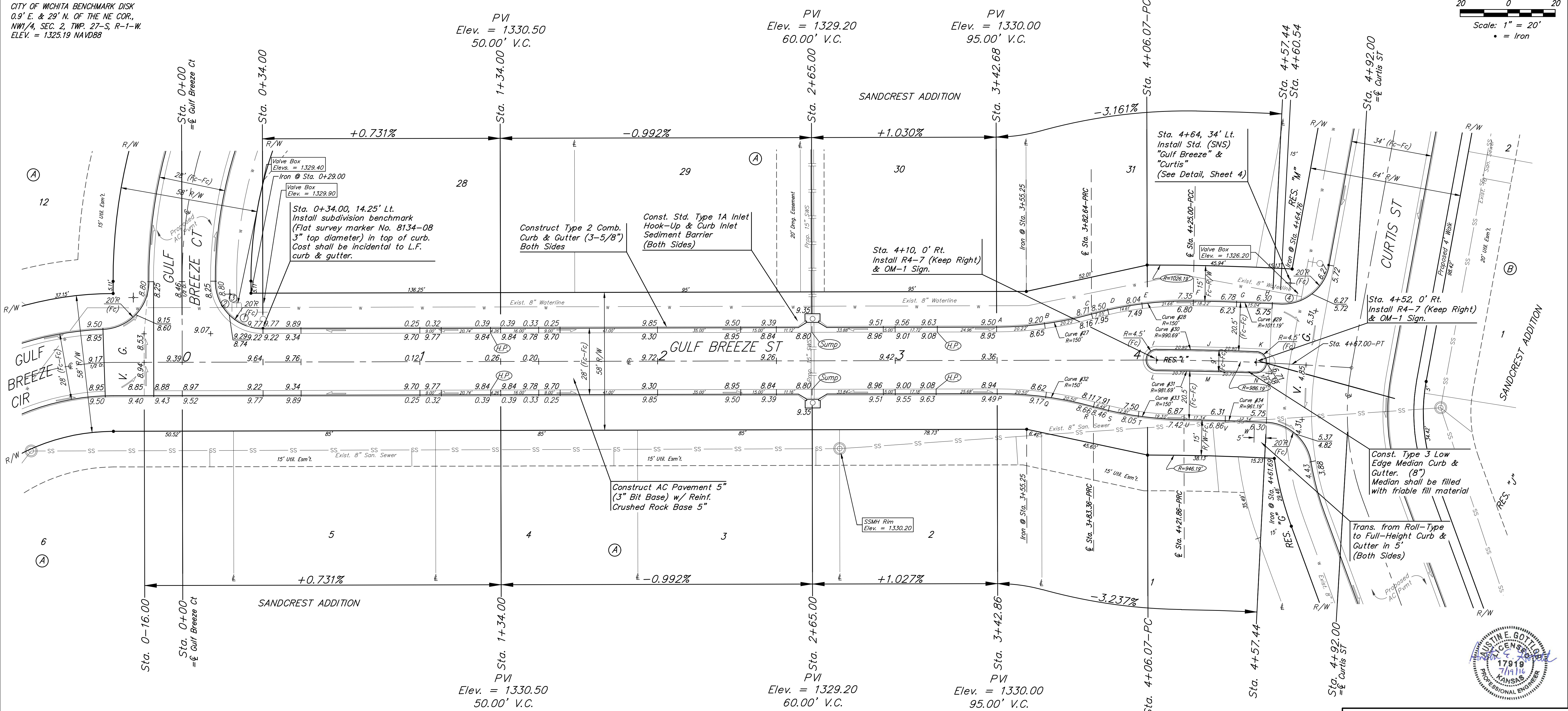
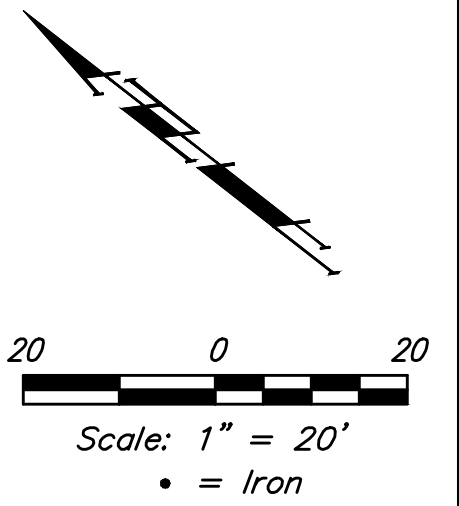


**BENCHMARKS:**  
 CITY OF WICHITA BENCHMARK DISK  
 34.9' S. & 31.2' W. OF THE SW COR.,  
 NW1/4, SEC. 2, TWP. 27-S, R-1-W.  
 ELEV. = 1327.57 NAVD88

CITY OF WICHITA BENCHMARK DISK  
 26.2' S. & 46.1' W. OF THE NW COR.,  
 NW1/4, SEC. 2, TWP. 27-S, R-1-W.  
 ELEV. = 1330.50 NAVD88

CITY OF WICHITA BENCHMARK DISK  
 0.9' E. & 29' N. OF THE NE COR.,  
 NW1/4, SEC. 2, TWP. 27-S, R-1-W.  
 ELEV. = 1325.19 NAVD88

Curve #27					Curve #28					Curve #29				
Curve Data Based on Face of Curb					Curve Data Based on Face of Curb					Curve Data Based on Face of Curb				
Rad. = 150' Delta = 152°01' Tangent = 20.35'					Rad. = 150' Delta = 163°00' Tangent = 21.82'					Rad. = 1011.19' Delta = 1°53'05" Tangent = 16.63'				
Arc = 40.44' L.C. = 40.33' Def./Ft. = 11.46163 Min.					Arc = 43.32' L.C. = 43.18' Def./Ft. = 11.46122 Min.					Arc = 33.26' L.C. = 33.26' Def./Ft. = 1.69999 Min.				
Station	Arc	Chord B' Lt	Defl.	Total Defl.	Station	Arc	Chord B' Lt	Defl.	Total Defl.	Station	Arc	Chord B' Lt	Defl.	Total Defl.
A	-	-	0°00'00"	0°00'00"	C	-	-	0°00'00"	0°00'00"	F	-	-	0°00'00"	0°00'00"
B	20.22'	19.13'	3°51'45"	3°51'45"	D	7.05'	7.43'	1°20'48"	1°20'48"	G	18.22'	18.37'	0°30'58"	0°30'58"
C	20.22'	19.13'	3°51'46"	7°43'31"	E	14.61'	15.39'	2°47'27"	4°08'15"	H	15.04'	15.16'	0°25'34"	0°56'32"



Curve #30				
Curve Data Based on Face of Curb				
Rad. = 990.69' Delta = 2°25'05" Tangent = 20.91'				
Arc = 41.80' L.C. = 41.81' Def./Ft. = 1.73545 Min.				
Station	Arc	Chord 4.5' Rt	Defl.	Total Defl.
I	-	-	0°00'00"	0°00'00"
J	20.90'	20.81'	0°36'16"	0°36'16"
K	20.90'	20.81'	0°36'17"	1°12'33"

Curve #31				
Curve Data Based on Face of Curb				
Rad. = 981.69' Delta = 2°25'05" Tangent = 20.72'				
Arc = 41.42' L.C. = 41.43' Def./Ft. = 1.75137 Min.				
Station	Arc	Chord 4.5' Lt	Defl.	Total Defl.
L	-	-	0°00'00"	0°00'00"
M	20.71'	20.81'	0°36'16"	0°36'16"
N	20.71'	20.81'	0°36'17"	1°12'33"

Curve #32				
Curve Data Based on Face of Curb				
Rad. = 150' Delta = 153°53' Tangent = 20.63'				
Arc = 41.00' L.C. = 40.88' Def./Ft. = 11.46199 Min.				
Station	Arc	Chord 8' Rt	Defl.	Total Defl.
P	-	-	0°00'00"	0°00'00"
Q	20.50'	19.40'	3°54'58"	3°54'58"
R	20.50'	19.40'	3°54'58"	7°49'56"

Curve #33				
Curve Data Based on Face of Curb				
Rad. = 150' Delta = 14°44'51" Tangent = 19.41'				
Arc = 38.60' L.C. = 38.50' Def./Ft. = 11.46179 Min.				
Station	Arc	Chord 8' Rt	Defl.	Total Defl.
S	-	-	0°00'00"	0°00'00"
T	6.49'	6.84'	1°14'23"	1°14'23"
U	19.30'	20.32'	3°41'13"	7°22'26"

Curve #34				
Curve Data Based on Face of Curb				
Rad. = 961.19' Delta = 2°04'02" Tangent = 17.34'				
Arc = 34.68' L.C. = 34.68' Def./Ft. = 1.78825 Min.				
Station	Arc	Chord 8' Rt	Defl.	Total Defl.
V	-	-	0°00'00"	0°00'00"
W	17.34'	17.20'	0°31'01"	0°31'01"

Roll type curb & gutter to be constructed on the pavement on this sheet. Top of curb elevation are given for full height curb.

**Baughman** Sandcrest Addition - Phase I  
**GULF BREEZE ST**  
 Sta. 0+00 to Sta. 4+92.00

Baughman Company, P.A. 315 Ellis St. Wichita, KS 67211 P 316-262-7271 F 316-262-0149  
 ENGINEERING | SURVEYING | PLANNING | LANDSCAPE ARCHITECTURE

PROJECT NUMBER: 472-85252  
 DESIGN: AEG  
 DRAWN: JAK  
 APPROVED: [Signature]  
 DATE: 7/19/16

REVISIONS:

SCALE: Noted  
 SHEET: **13 OF 66**

