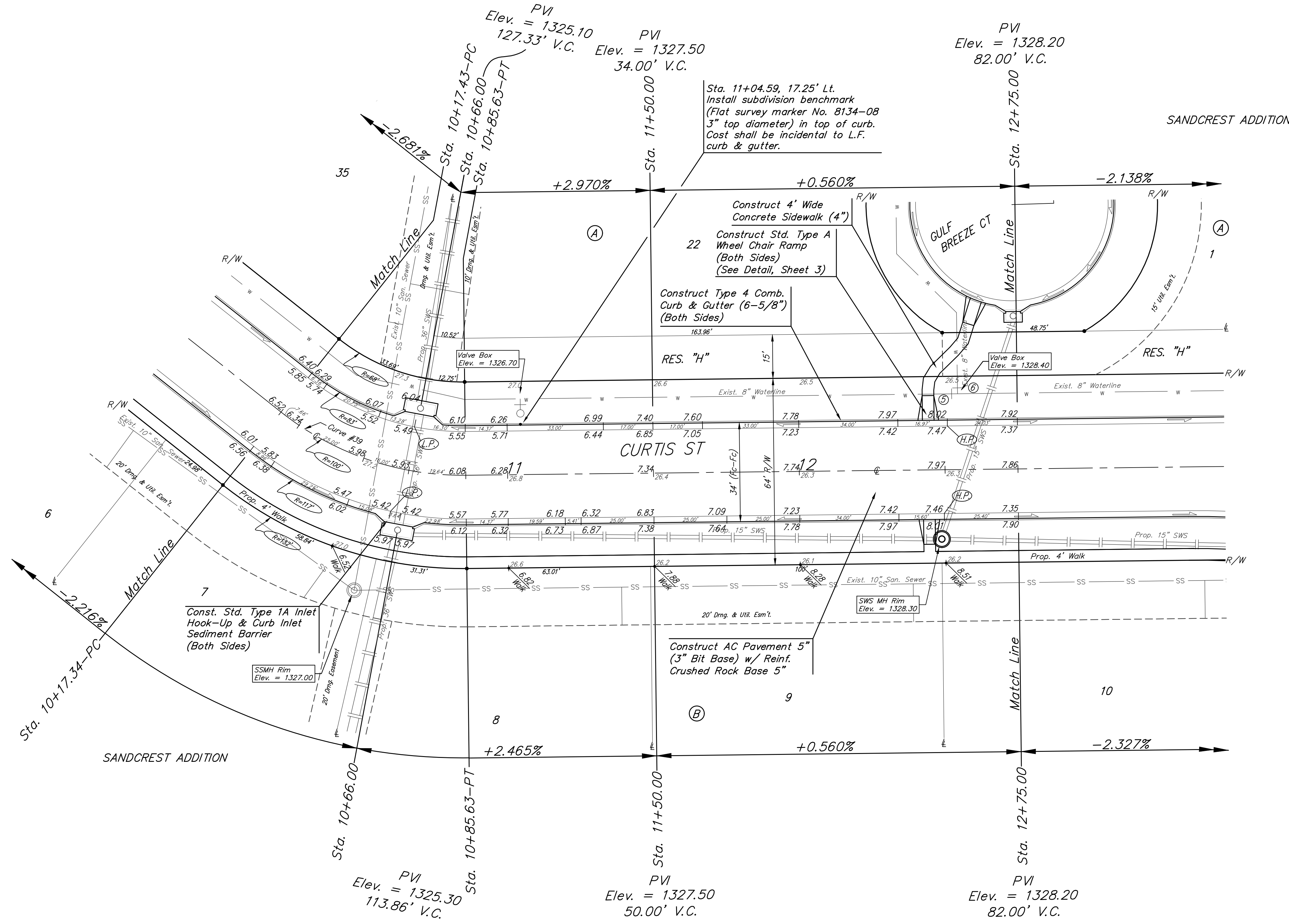
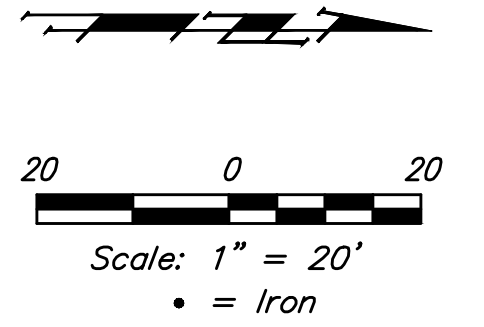


**BENCHMARKS:**  
 CITY OF WICHITA BENCHMARK DISK  
 34.9' S. & 31.2' W. OF THE SW COR.,  
 NW1/4, SEC. 2, TWP. 27-S, R-1-W.  
 ELEV. = 1327.57 NAVD88

CITY OF WICHITA BENCHMARK DISK  
 26.2' S. & 46.1' W. OF THE NW COR.,  
 NW1/4, SEC. 2, TWP. 27-S, R-1-W.  
 ELEV. = 1330.50 NAVD88

CITY OF WICHITA BENCHMARK DISK  
 0.9' E. & 29' N. OF THE NE COR.,  
 NW1/4, SEC. 2, TWP. 27-S, R-1-W.  
 ELEV. = 1325.19 NAVD88



Curve #39  
 Curve Data Based on Centerline  
 Rad. = 100' Delta = 39°07'52" Tangent = 35.54'  
 Arc = 68.20' L.C. = 66.98' Def./Ft. = 17.21310 Min.

Station	Arc	Chord		Defl.	Total Defl.
		8' Left	8' Right		
10+17.43	-	-	-	0°00'00"	0°00'00"
10+25.00	7.57'	5.68'	9.47'	2°10'18"	2°10'18"
10+50.00	25.00'	18.73'	31.21'	7°10'20"	9°20'38"
10+75.00	25.00'	18.73'	31.21'	7°10'19"	16°30'57"
10+85.63	10.63'	7.98'	13.30'	3°02'59"	19°33'56"



	Sandcrest Addition - Phase I	
	<b>CURTIS ST</b>	
Sta. 10+17.43 to Sta. 12+75.00		
Baughman Company, P.A. 315 Ellis St. Wichita, KS 67211 P 316-262-7271 F 316-262-0149		
ENGINEERING   SURVEYING   PLANNING   LANDSCAPE ARCHITECTURE		
PROJECT NUMBER 472-85252	DESIGN AEG	DRAWN JAK
REVISIONS:	APPROVED	DATE 7/19/16
	SCALE Noted	SHEET
		<b>17 OF 66</b>