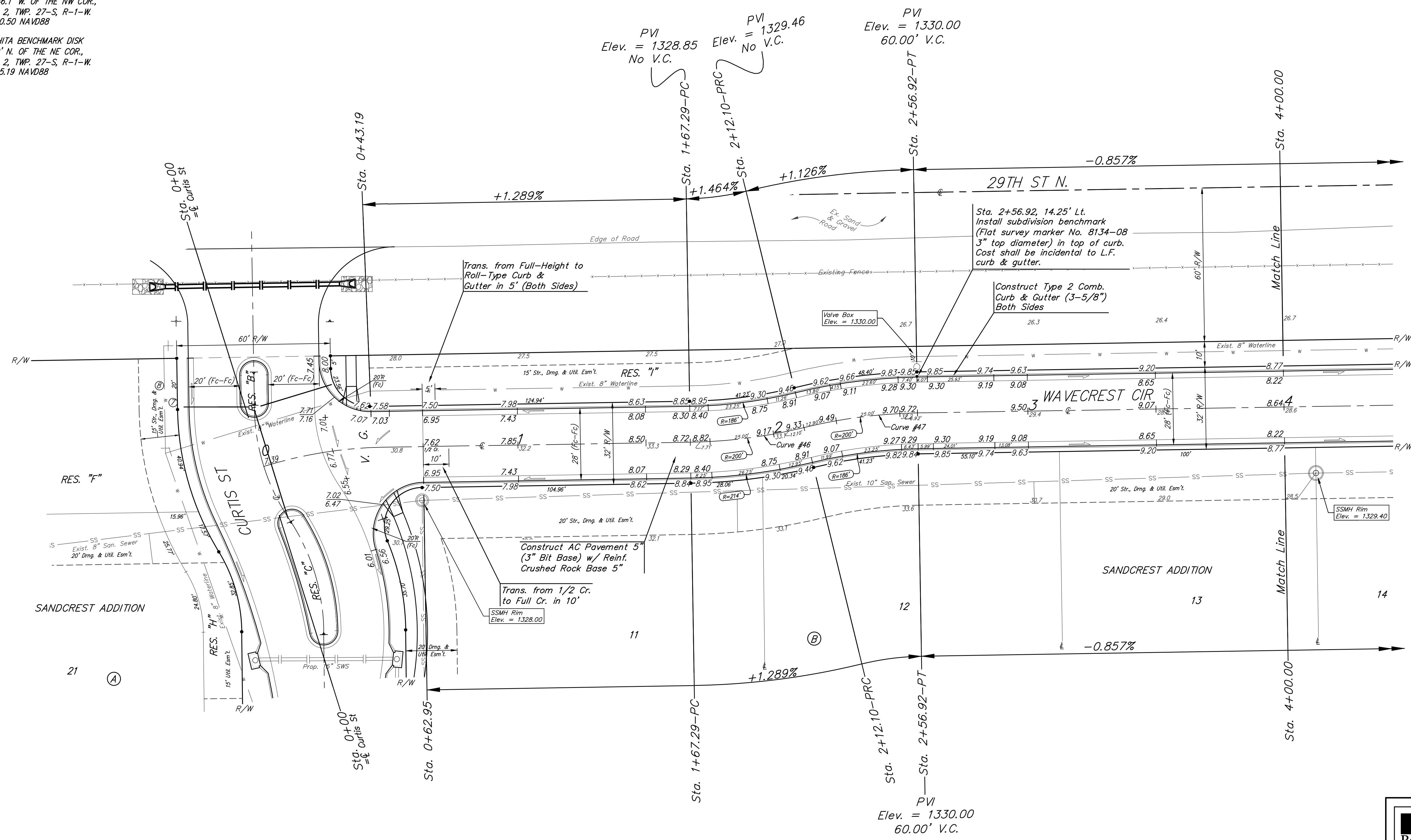
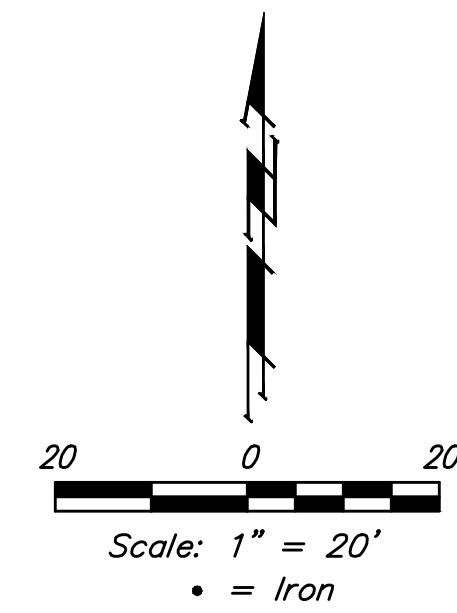


BENCHMARKS:
 CITY OF WICHITA BENCHMARK DISK
 34.9' S. & 31.2' W. OF THE SW COR.,
 NW1/4, SEC. 2, TWP. 27-S, R-1-W.
 ELEV. = 1327.57 NAVD88

CITY OF WICHITA BENCHMARK DISK
 26.2' S. & 46.1' W. OF THE NW COR.,
 NW1/4, SEC. 2, TWP. 27-S, R-1-W.
 ELEV. = 1330.50 NAVD88

CITY OF WICHITA BENCHMARK DISK
 0.9' E. & 29' N. OF THE NE COR.,
 NW1/4, SEC. 2, TWP. 27-S, R-1-W.
 ELEV. = 1325.19 NAVD88



Curve #46
 Curve Data Based on Centerline
 Rad. = 200' Delta = 12°50'19" Tangent = 22.50'
 Arc = 44.81' L.C. = 44.72' Def./Ft. = 8.59537 Min.

Station	Arc	Chord		Defl.	Total Defl.
		8' Left	8' Right		
1+67.29	-	-	-	0°00'00"	0°00'00"
1+75.00	7.71'	6.86'	8.56'	1°06'16"	1°06'16"
2+00.00	25.00'	22.24'	27.74'	3°34'53"	4°41'09"
2+12.10	12.10'	10.77'	13.43'	1°44'01"	6°25'10"

Curve #47
 Curve Data Based on Centerline
 Rad. = 200' Delta = 12°50'19" Tangent = 22.50'
 Arc = 44.82' L.C. = 44.72' Def./Ft. = 8.59345 Min.

Station	Arc	Chord		Defl.	Total Defl.
		8' Left	8' Right		
2+12.10	-	-	-	0°00'00"	0°00'00"
2+25.00	12.90'	14.31'	11.48'	1°50'51"	1°50'51"
2+50.00	25.00'	22.73'	22.23'	3°34'51"	5°25'42"
2+56.92	6.92'	7.68'	6.16'	0°59'28"	6°25'10"

Roll type curb & gutter to be constructed on the pavement on this sheet.
 Top of curb elevation are given for full height curb.

Baughman Sandcrest Addition - Phase I
WAVECREST CIR
 Sta. 0+00 to Sta. 4+000

Baughman Company, P.A. 315 Ellis St. Wichita, KS 67211 P 316-262-7271 F 316-262-0149
 ENGINEERING | SURVEYING | PLANNING | LANDSCAPE ARCHITECTURE

PROJECT NUMBER 472-85252	DESIGN AEG	DRAWN JAK
REVISIONS:	APPROVED	DATE 7/19/16
SCALE Noted		SHEET 19 OF 66

E:\Projects\Pearl Beach, LLC\F860\Engineering\Phase 1\Str_1510-E318-STR PLANS.dwg

