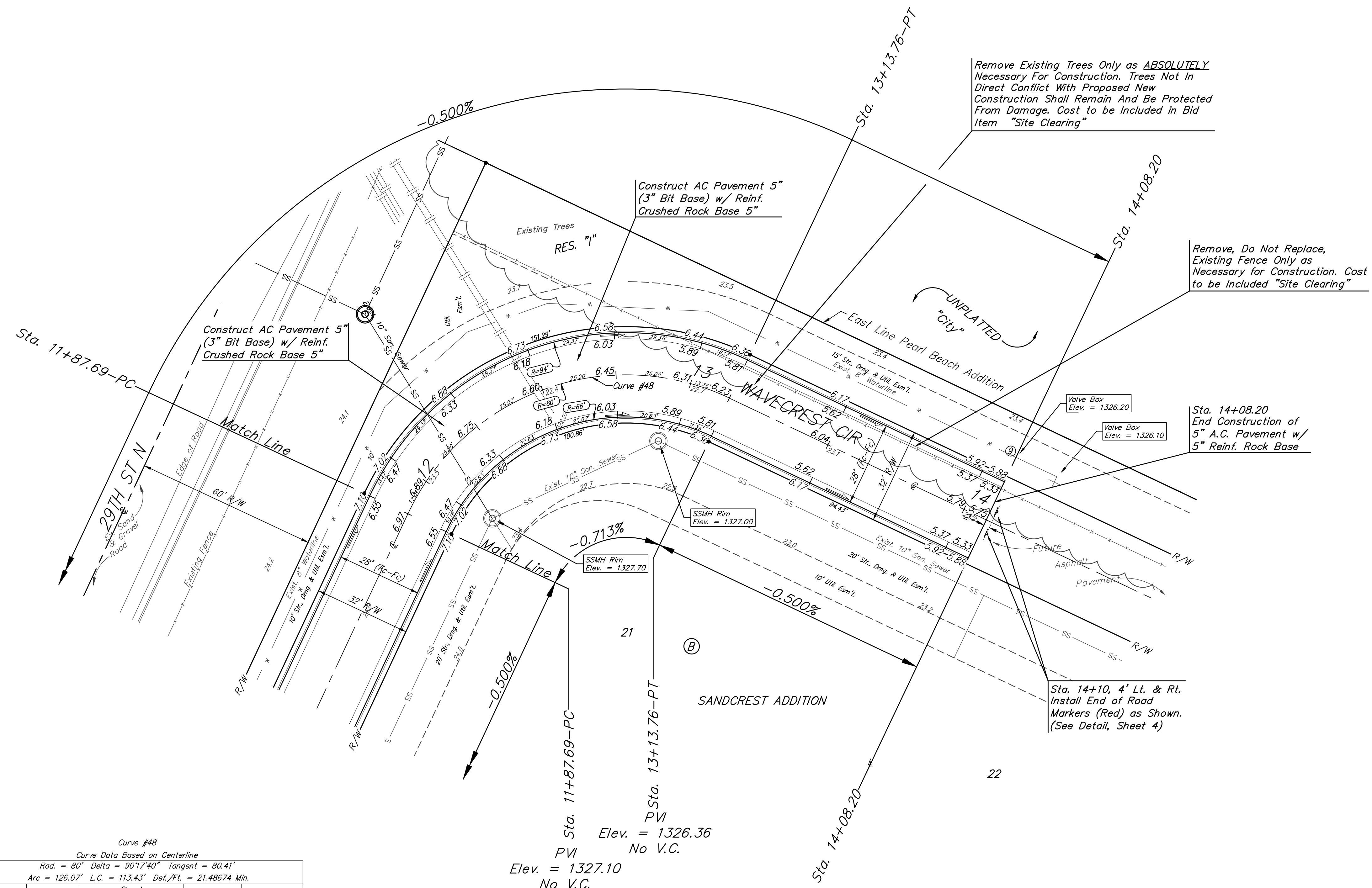
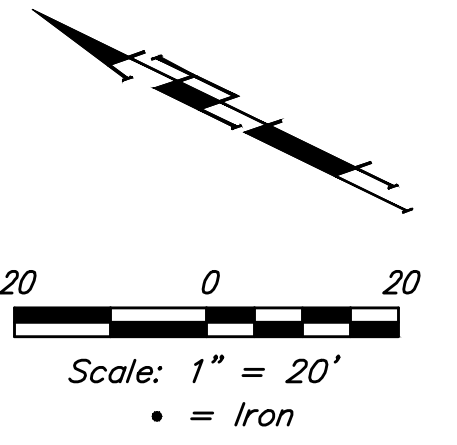


BENCHMARKS:
 CITY OF WICHITA BENCHMARK DISK
 34.9' S. & 31.2' W. OF THE SW COR.,
 NW1/4, SEC. 2, TWP. 27-S, R-1-W.
 ELEV. = 1327.57 NAVD88

CITY OF WICHITA BENCHMARK DISK
 26.2' S. & 46.1' W. OF THE NW COR.,
 NW1/4, SEC. 2, TWP. 27-S, R-1-W.
 ELEV. = 1330.50 NAVD88

CITY OF WICHITA BENCHMARK DISK
 0.9' E. & 29' N. OF THE NE COR.,
 NW1/4, SEC. 2, TWP. 27-S, R-1-W.
 ELEV. = 1325.19 NAVD88



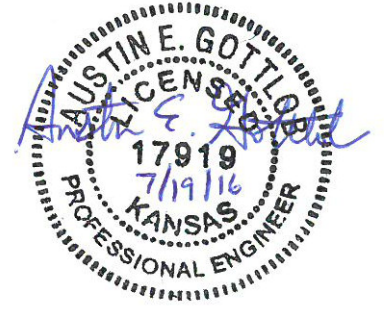
Curve #48
 Curve Data Based on Centerline
 Rad. = 80' Delta = 90°17'40" Tangent = 80.41'
 Arc = 126.07' L.C. = 113.43' Def./Ft. = 21.48674 Min.

Station	Arc	Chord		Defl.	Total Defl.
		8' Left	8' Right		
11+87.69	-	-	-	0°00'00"	0°00'00"
12+00.00	12.31'	15.68'	8.92'	4°24'30"	4°24'30"
12+25.00	25.00'	31.75'	18.05'	8°57'10"	13°21'40"
12+50.00	25.00'	31.75'	18.05'	8°57'10"	22°18'50"
12+75.00	25.00'	31.75'	18.05'	8°57'10"	31°16'00"
13+00.00	25.00'	31.75'	18.05'	8°57'11"	40°13'11"
13+13.76	13.76'	17.52'	9.96'	4°55'39"	45°08'50"

Sta. 11+87.69-PC
 PVI
 Elev. = 1327.10
 No V.C.

Sta. 13+13.76-PT
 PVI
 Elev. = 1326.36
 No V.C.

Roll type curb & gutter to be constructed on the pavement on this sheet.
 Top of curb elevation are given for full height curb.



	Sandcrest Addition - Phase I	
	WAVECREST CIR	
Sta. 11+87.69 to Sta. 14+08.20		
Baughman Company, P.A. 315 Ellis St. Wichita, KS 67211 P 316-262-7271 F 316-262-0149 ENGINEERING SURVEYING PLANNING LANDSCAPE ARCHITECTURE		
PROJECT NUMBER 472-85252	DESIGN AEG	DRAWN JAK
REVISIONS:	APPROVED	DATE 7/19/16
	SCALE Noted	SHEET
		22 OF 66