

BENCHMARKS:
 CITY OF WICHITA BENCHMARK DISK
 34.9' S. & 31.2' W. OF THE SW COR.,
 NW1/4, SEC. 2, TWP. 27-S, R-1-W.
 ELEV. = 1327.57 NAVD88

CITY OF WICHITA BENCHMARK DISK
 26.2' S. & 46.1' W. OF THE NW COR.,
 NW1/4, SEC. 2, TWP. 27-S, R-1-W.
 ELEV. = 1330.50 NAVD88

CITY OF WICHITA BENCHMARK DISK
 0.9' E. & 29' N. OF THE NE COR.,
 NW1/4, SEC. 2, TWP. 27-S, R-1-W.
 ELEV. = 1325.19 NAVD88

Existing Pond

RESERVE "J"

Sta. 0+00, Line 1
 Begin Construction of 36"
 RCP w/ End Section and
 33 S.Y. of Light Stone
 Rip-Rap as Indicated.
 Contractor to restrain End
 Section to last section of
 pipe per City of Wichita Specs.

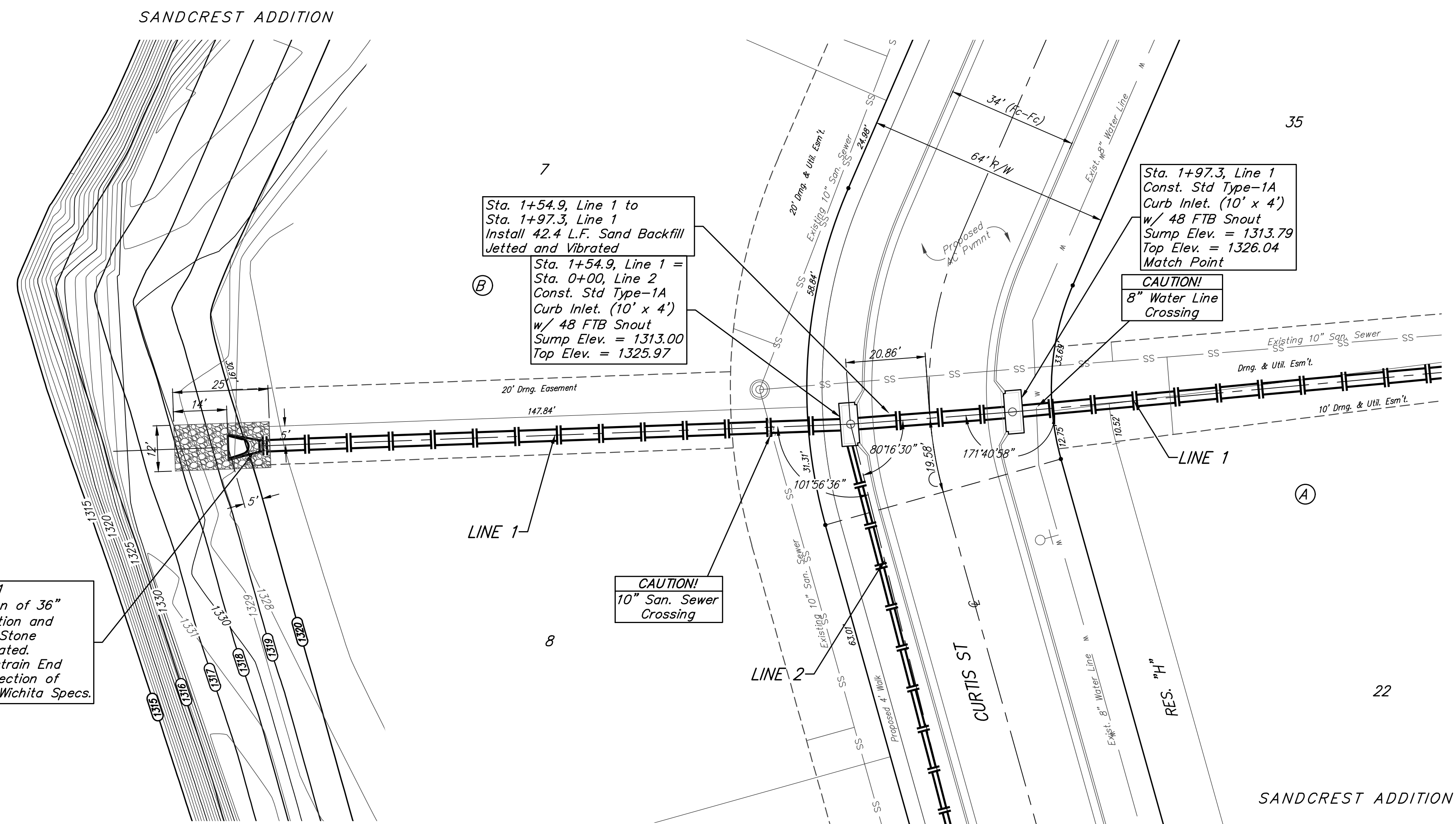
Sta. 1+54.9, Line 1 to
 Sta. 1+97.3, Line 1
 Install 42.4 L.F. Sand Backfill
 Jetted and Vibrated

Sta. 1+54.9, Line 1 =
 Sta. 0+00, Line 2
 Const. Std. Type-1A
 Curb Inlet. (10' x 4')
 w/ 48 FTB Snout
 Sump Elev. = 1313.00
 Top Elev. = 1325.97

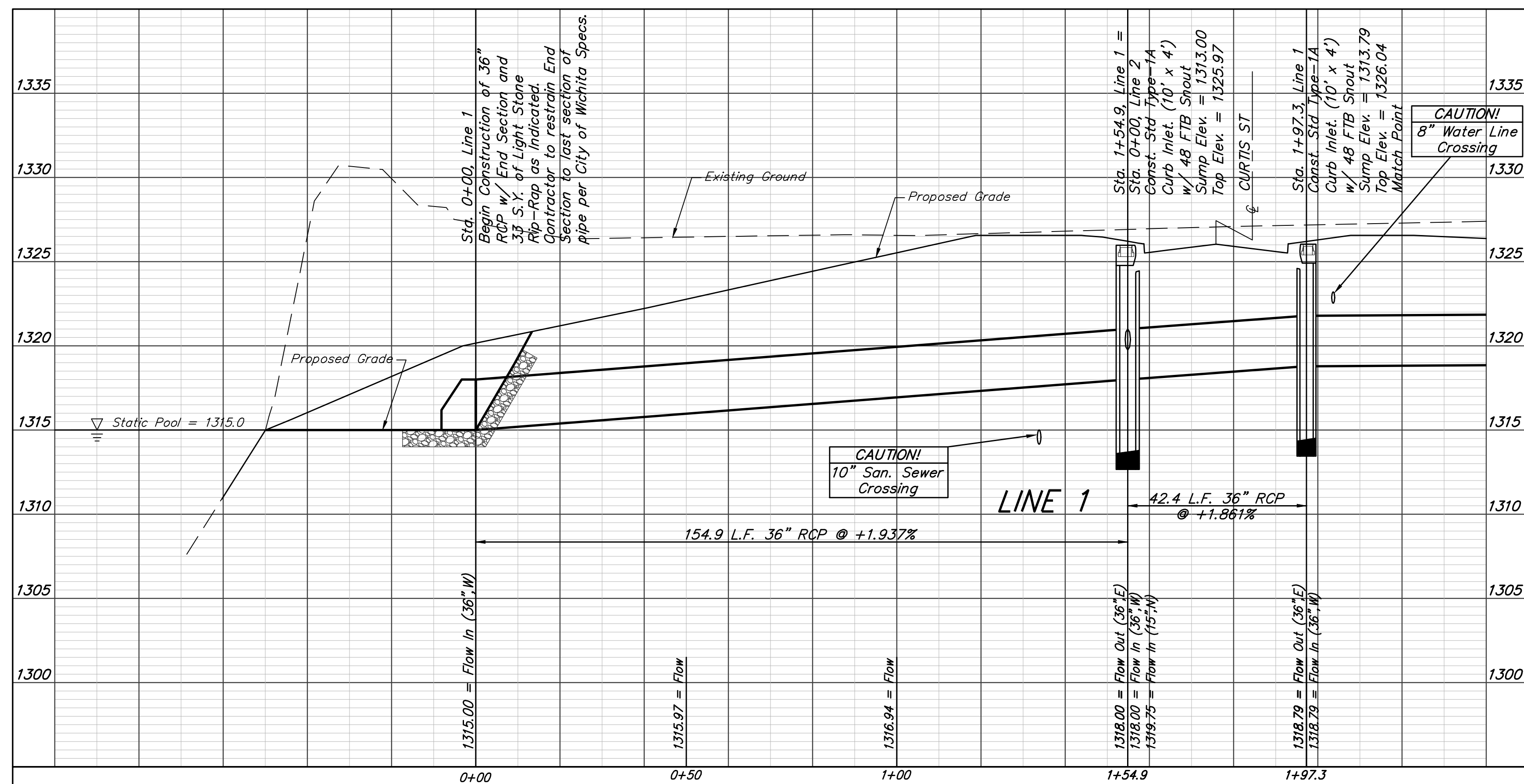
Sta. 1+97.3, Line 1
 Const. Std. Type-1A
 Curb Inlet. (10' x 4')
 w/ 48 FTB Snout
 Sump Elev. = 1313.79
 Top Elev. = 1326.04
 Match Point

CAUTION!
 8" Water Line
 Crossing

CAUTION!
 10" San. Sewer
 Crossing



SANDCREST ADDITION



		Sandcrest Addition - Phase I	
		LINE 1	
Storm Water Sewer Improvements		DESIGN	DRAWN
Baughman Company, P.A. 315 Ellis St. Wichita, KS 67211 P 316-262-7271 F 316-262-0149		AEG	JAK
ENGINEERING SURVEYING PLANNING LANDSCAPE ARCHITECTURE		APPROVED	DATE
PROJECT NUMBER 472-85252	REVISIONS:	Noted	7/19/16
		SCALE	SHEET
			23 OF 66