

BENCHMARKS:
 CITY OF WICHITA BENCHMARK DISK
 34.9' S. & 31.2' W. OF THE SW COR.,
 NW1/4, SEC. 2, TWP. 27-S, R-1-W.
 ELEV. = 1327.57 NAVD88

CITY OF WICHITA BENCHMARK DISK
 26.2' S. & 46.1' W. OF THE NW COR.,
 NW1/4, SEC. 2, TWP. 27-S, R-1-W.
 ELEV. = 1330.50 NAVD88

CITY OF WICHITA BENCHMARK DISK
 0.9' E. & 29' N. OF THE NE COR.,
 NW1/4, SEC. 2, TWP. 27-S, R-1-W.
 ELEV. = 1325.19 NAVD88

Curve #1
 Curve Data Based on Face of Curb
 Rad. = 453' Delta = 73°15' Tangent = 30.17'
 Arc = 60.26' L.C. = 60.21' Def./Ft. = 3.79398 Min.

Station	Arc	Chord 8' Lt.	Defl.	Total Defl.
A	-	-	0'00"00"	0'00"00"
B	30.13'	29.59'	1'54"19"	1'54"19"
C	18.95'	24.55'	1'34"51"	3'29"10"
D	11.18'	5.04'	0'19"28"	3'48"38"

Curve #2
 Curve Data Based on Face of Curb
 Rad. = 333' Delta = 34°48'26" Tangent = 104.38'
 Arc = 202.32' L.C. = 199.20' Def./Ft. = 5.16121 Min.

Station	Arc	Chord 8' Lt.	Defl.	Total Defl.
D	-	-	0'00"00"	0'00"00"
E	25.29'	25.89'	2'10"32"	2'10"32"
F	7.06'	7.23'	0'36"26"	2'46"58"
G	18.23'	18.66'	1'34"05"	4'21"03"
H	25.29'	25.89'	2'10"32"	6'31"35"
I	25.29'	25.89'	2'10"32"	8'42"07"
J	25.29'	25.89'	2'10"31"	10'52"38"
K	25.29'	25.89'	2'10"32"	13'03'10"
L	25.29'	25.89'	2'10"31"	15'13'41"
M	25.29'	25.89'	2'10"32"	17'24'13"

Curve #3
 Curve Data Based on Face of Curb
 Rad. = 150' Delta = 20°01'03" Tangent = 26.47'
 Arc = 52.40' L.C. = 52.14' Def./Ft. = 11.46040 Min.

Station	Arc	Chord 8' Lt.	Defl.	Total Defl.
M	-	-	0'00"00"	0'00"00"
N	26.20'	27.57'	5'00"16"	5'00"16"
O	26.20'	27.57'	5'00"15"	10'00"31"

Curve #4
 Curve Data Based on Face of Curb
 Rad. = 600' Delta = 7°38'18" Tangent = 40.05'
 Arc = 79.98' L.C. = 79.93' Def./Ft. = 2.86509 Min.

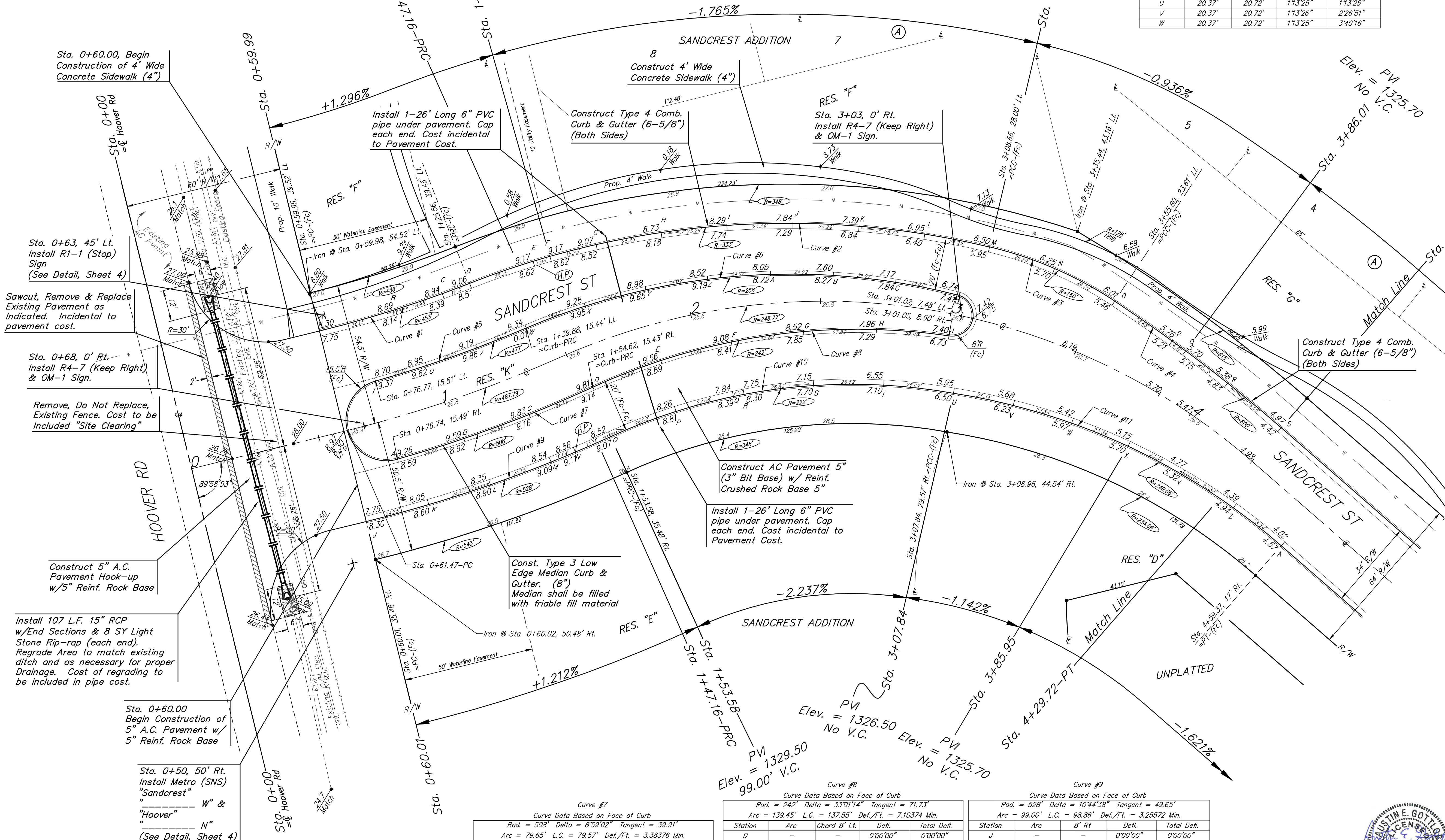
Station	Arc	Chord 8' Lt.	Defl.	Total Defl.
O	-	-	0'00"00"	0'00"00"
P	26.66'	27.02'	1'16"23"	1'16"23"
Q	6.41'	6.50'	0'18"22"	1'34'45"
R	20.25'	20.52'	0'58"01"	2'32'46"
S	26.66'	27.02'	1'16"23"	3'49'09"

Curve #5
 Curve Data Based on Face of Curb
 Rad. = 477' Delta = 7°20'32" Tangent = 30.60'
 Arc = 61.11' L.C. = 61.08' Def./Ft. = 3.60443 Min.

Station	Arc	Chord 8' Rt.	Defl.	Total Defl.
T	-	-	0'00"00"	0'00"00"
U	20.37'	20.72'	1'13"25"	1'13"25"
V	20.37'	20.72'	1'13"26"	2'26'51"
W	20.37'	20.72'	1'13"25"	3'40'16"

Curve #6
 Curve Data Based on Face of Curb
 Rad. = 258' Delta = 37°20'50" Tangent = 87.20'
 Arc = 168.14' L.C. = 165.21' Def./Ft. = 6.66359 Min.

Station	Arc	Chord 8' Rt.	Defl.	Total Defl.
W	-	-	0'00"00"	0'00"00"
X	24.02'	23.27'	2'40"04"	2'40"04"
Y	24.02'	23.27'	2'40"03"	5'20'07"
Z	24.02'	23.27'	2'40"04"	8'00'11"
A	24.02'	23.27'	2'40"03"	10'40'14"
B	24.02'	23.27'	2'40"04"	13'20'18"
C	24.02'	23.27'	2'40"03"	16'00'21"
D	24.02'	23.27'	2'40"04"	18'40'25"



Curve #7
 Curve Data Based on Face of Curb
 Rad. = 508' Delta = 8°59'02" Tangent = 39.91'
 Arc = 79.65' L.C. = 79.57' Def./Ft. = 3.38376 Min.

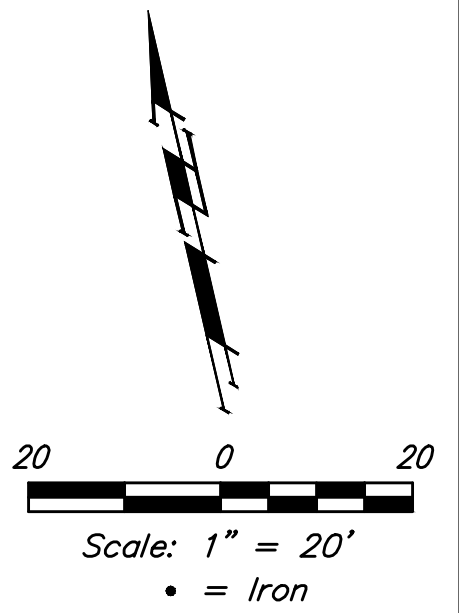
Station	Arc	Chord 8' Lt.	Defl.	Total Defl.
A	-	-	0'00"00"	0'00"00"
B	26.55'	26.13'	1'29"50"	1'29"50"
C	26.55'	26.13'	1'29"51"	2'59'41"
D	26.55'	26.13'	1'29"50"	4'29'31"

Curve #8
 Curve Data Based on Face of Curb
 Rad. = 242' Delta = 33°01'14" Tangent = 71.73'
 Arc = 139.45' L.C. = 137.55' Def./Ft. = 7.10374 Min.

Station	Arc	Chord 8' Lt.	Defl.	Total Defl.
D	-	-	0'00"00"	0'00"00"
E	27.89'	28.80'	3'18"07"	3'18"07"
F	27.89'	28.80'	3'18"08"	6'36'15"
G	27.89'	28.80'	3'18"07"	9'54'22"
H	27.89'	28.80'	3'18"08"	13'12'30"
I	27.89'	28.80'	3'18"07"	16'30'37"

Curve #9
 Curve Data Based on Face of Curb
 Rad. = 528' Delta = 10°44'38" Tangent = 49.65'
 Arc = 99.00' L.C. = 98.86' Def./Ft. = 3.25572 Min.

Station	Arc	8' Rt.	Defl.	Total Defl.
J	-	-	0'00"00"	0'00"00"
K	24.75'	25.12'	1'20"35"	1'20"35"
L	24.75'	25.12'	1'20"35"	2'41'10"
M	24.75'	25.12'	1'20"34"	4'01'44"
N	10.04'	10.19'	0'32'41"	4'34'25"
O	14.71'	14.93'	0'47'54"	5'22'19"



Curve #10
 Curve Data Based on Face of Curb
 Rad. = 222' Delta = 34°36'37" Tangent = 69.17'
 Arc = 134.10' L.C. = 132.07' Def./Ft. = 7.74279 Min.

Station	Arc	8' Rt.	Defl.	Total Defl.
O	-	-	0'00"00"	0'00"00"
P	26.82'	25.84'	3'27'40"	3'27'40"
Q	22.68'	21.85'	2'55'36"	6'23'16"
R	4.14'	3.99'	0'32'03"	6'55'19"
S	26.82'	25.84'	3'27'40"	10'22'59"
T	26.82'	25.84'	3'27'40"	13'50'39"
U	26.82'	25.84'	3'27'39"	17'18'18"

Curve #11
 Curve Data Based on Face of Curb
 Rad. = 249.06' Delta = 32°13'14" Tangent = 71.94'
 Arc = 140.04' L.C. = 138.22' Def./Ft. = 6.90243 Min.

Station	Arc	8' Rt.	Defl.	Total Defl.
U	-	-	0'00"00"	0'00"00"
V	23.34'	22.59'	2'41'06"	2'41'06"
W	23.34'	22.59'	2'41'06"	5'22'12"
X	23.34'	22.59'	2'41'07"	8'03'19"
Y	23.34'	22.59'	2'41'06"	10'44'25"
Z	23.34'	22.59'	2'41'06"	13'25'31"
A	23.34'	22.59'	2'41'06"	16'06'37"

Sandcrest Addition - Phase I

SANDCREST
 Sta. 0+00 to Sta. 4+29.72

Baughman Company, P.A. 313 Ellis St. Wichita, KS 67211 P 316-262-7271 F 316-262-0149
 ENGINEERING | SURVEYING | PLANNING | LANDSCAPE ARCHITECTURE

PROJECT NUMBER 472-85252	DESIGN AEG	DRAWN JAK
REVISIONS:	APPROVED	DATE 7/19/16
SCALE Noted		SHEET 7 OF 66

