

GENERAL NOTES

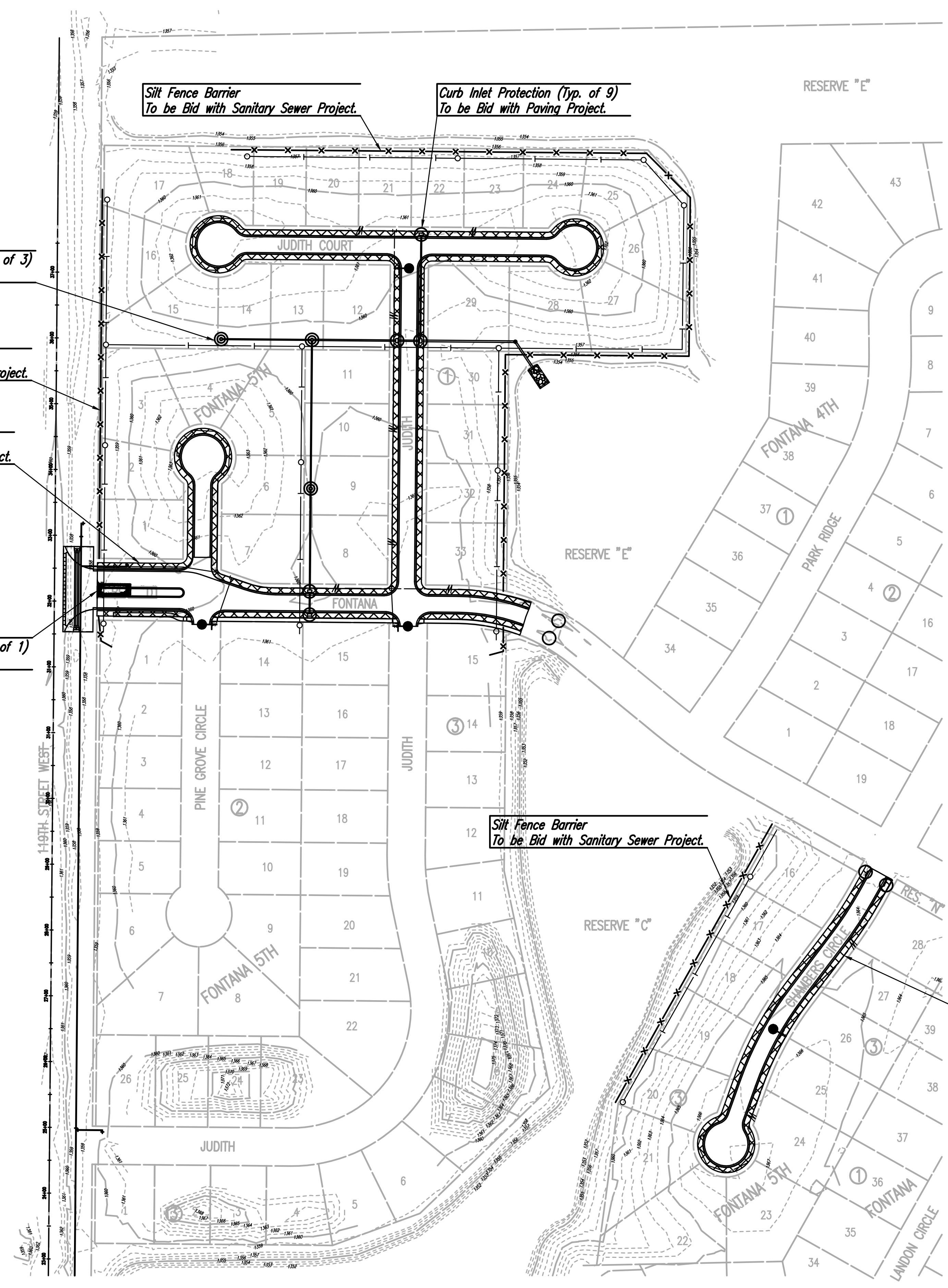
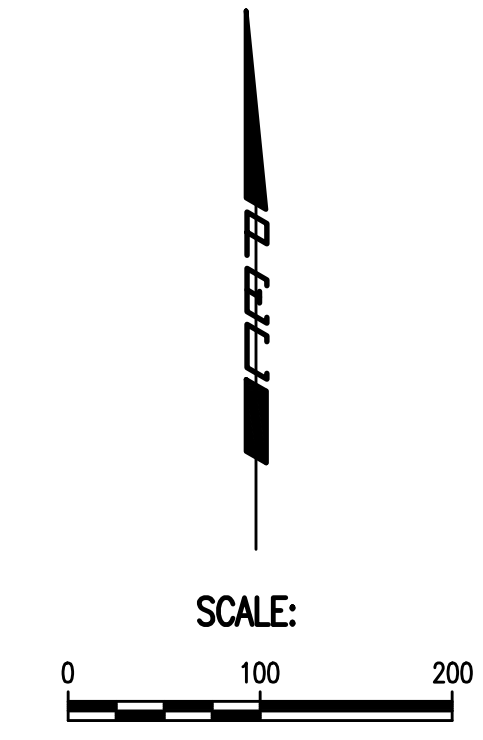
- CONTRACTOR SHALL INSTALL AND MAINTAIN EROSION PROTECTION THROUGHOUT THE ENTIRE PROJECT. THE FOLLOWING QUANTITIES SHALL BE INCLUDED IN BID ITEMS FOR EACH RESPECTIVE PART. EROSION PROTECTION SHALL BE INCLUDED IN THE BID AS FOLLOWS:

<b>SANITARY SEWER (468-84585)</b>	
SILT FENCE BARRIER	2,280 L.F.
<b>WATER LINE (448-90427)</b>	
STABILIZED CONSTRUCTION ENTRANCE	1 EACH
<b>PAVING AND DRAINAGE (472-84801)</b>	
CURB INLET PROTECTION	9 EACH
BACKYARD INLET PROTECTION	3 EACH
BACK OF CURB PROTECTION	5,025 L.F.
<b>STORM WATER DRAIN (468-84588)</b>	
SILT FENCE BARRIER	1,073 L.F.
DITCH CHECKS	136 L.F.

- THE EROSION CONTROL DEVICES SHOWN ON THIS SHEET ARE CONSIDERED MINIMUM STANDARDS. WHENEVER SEDIMENT ENTERS THE STREETS, STORM SEWERS, DITCHES, OR PONDS, CONTRACTOR WILL INSTALL ADDITIONAL DEVICES, AS NEEDED, TO CORRECT THE PROBLEM.
- THE EROSION CONTROL DEVICES SHOWN HEREON MUST BE IN PLACE AT ALL TIMES DURING CONSTRUCTION UNTIL SUCH TIME AS THE SITE IS REESTABLISHED WITH PAVING OR GRASS. TEMPORARY OR PERMANENT SEEDING AND MULCH WILL BE INSTALLED WHEN EARTHWORK ACTIVITIES CEASE IN AN AREA FOR 14 DAYS OR MORE.
- ANY MUD INADVERTENTLY TRACKED ONTO ANY STREET SHALL BE CLEANED UP BY THE CONTRACTOR, AT THE END OF EACH DAY'S WORK, OR AS DIRECTED BY THE FIELD ENGINEER.
- CONTRACTOR TO FURNISH A TRUCK WASH-OUT PIT TO BE PLACED AT A CONVENIENT LOCATION THAT DOES NOT CONFLICT WITH CONSTRUCTION. CONTRACTOR SHALL CLEAN OUT AND BACKFILL PIT PRIOR TO FINAL INSPECTION. LOCATION SHALL BE APPROVED BY THE FIELD ENGINEER.

LEGEND

	SILT FENCE (TO BE BID WITH SANITARY SEWER PROJECT)
	STABILIZED CONSTRUCTION ENTRANCE (TO BID WITH WATER LINE PROJECT)
	BACK OF CURB PROTECTION
	PROPOSED CURB INLET PROTECTION
	PROPOSED BACKYARD INLET PROTECTION
	PROPOSED WATER MAIN
	PROPOSED SANITARY SEWER w/MANHOLE
	PROPOSED STORM WATER SEWER



Silt Fence Barrier  
To be Bid with Sanitary Sewer Project.

Curb Inlet Protection (Typ. of 9)  
To be Bid with Paving Project.

Backyard Inlet Protection (Typ. of 3)  
To be Bid with Paving Project.

Silt Fence Barrier  
To be Bid with Sanitary Sewer Project.

Back of Curb Protection  
To be Bid with Paving Project.

Stabilized Construction Entrance (Typ. of 1)  
To be Bid with Water Line Project.

Silt Fence Barrier  
To be Bid with Sanitary Sewer Project.

Back of Curb Protection  
To be Bid with Paving Project.

Served 07-19-2016 2:25:18 PM by CSI  
 Plot Scale 1:1 07-19-2016 5:28:17 PM by CSI  
 U:\Wichita-Civil\2015\15631\001\Drawings\15631-001-C15-EROSION CONTROL PLAN

	Revision	By	Date
	<b>FONTANA 5TH - PHASE 1</b> <b>WATERLINE IMPROVEMENTS</b> <b>EROSION CONTROL PLAN</b>		
	GARY JANZEN, P.E. - CITY ENGINEER CITY OF WICHITA PROJECT NO. 448-90427		
	PROFESSIONAL ENGINEERING CONSULTANTS, P.A. 303 SOUTH TOPEKA WICHITA, KS 67202 316-262-2691 www.pec1.com		
Designed by	MDK, SAD	Job No.	35-15631-1-0042
Drawn by	CSL, KTD	Date	September 2015
			Sht. 15 of 18