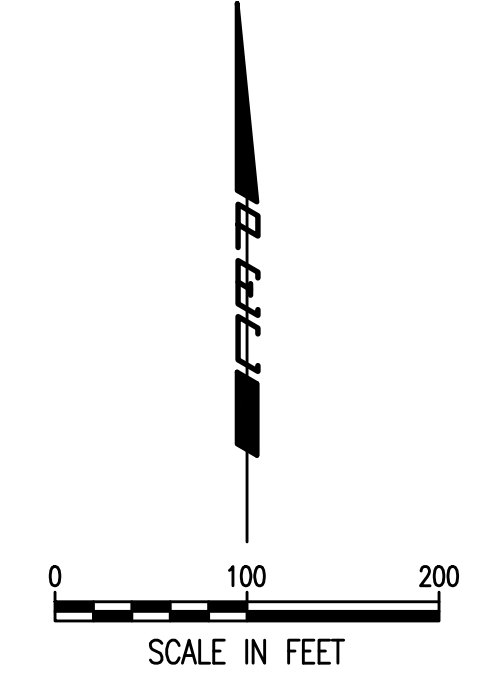


FONTANA 5TH

AN ADDITION TO WICHITA, SEDGWICK COUNTY, KANSAS

BUBBLE MAP



205, RTW
Found Pipe w/Sedgwick County
Cap in Concrete

POINT OF BEGINNING

RESERVE A

RESERVE B

RESERVE C

SECTION LINE

119TH STREET WEST

Complete Access Control Except One Opening

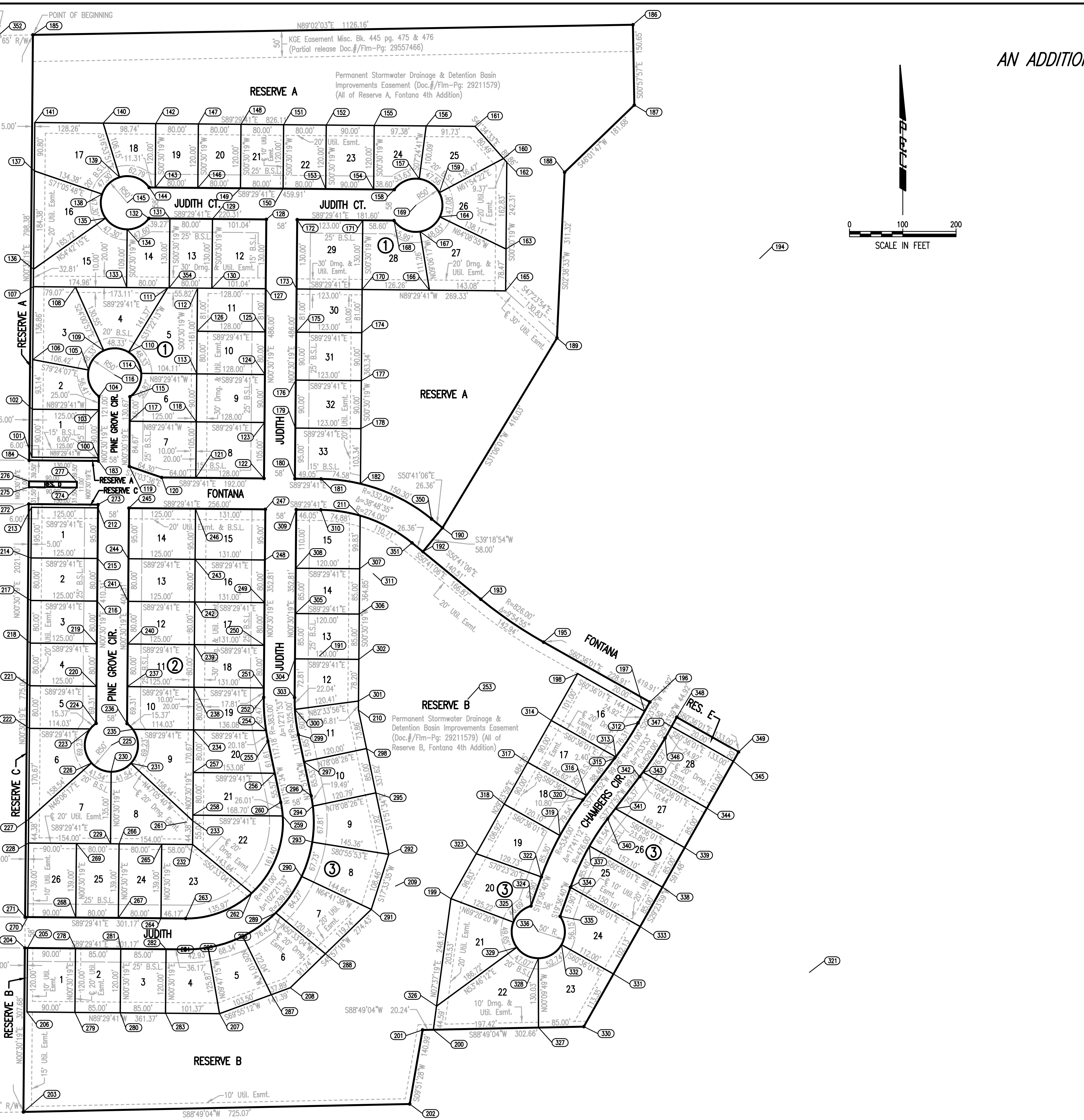
798.38'

82.00'

775.04'

58.00'

307.68'



Sowed 02-24-2016 11:46:33 AM by KURTIS DEKAT
Plot Scale 1:1 07-19-2016 5:23:27 PM by KURTIS DEKAT
U:\Wichita-Civil\2015\15631\001\Drawings\15631-001-003 PLAT BUBBLE MAP (FONTANA 5TH ADDITION)

	No.	Revision	By	Date
	FONTANA 5TH - PHASE 1 WATERLINE IMPROVEMENTS PLAT BUBBLE MAP (FONTANA 5TH ADDITION)			
	GARY JANZEN, P.E. - CITY ENGINEER CITY OF WICHITA PROJECT NO. 448-90427			
	PEC PROFESSIONAL ENGINEERING CONSULTANTS, P.A. 303 SOUTH TOPEKA WICHITA, KS 67202 316-262-2691 www.pec1.com			
Designed by	MDK, SAD	Job No.	35-15631-1-0042	Sht. 3 of 18
Drawn by	CSL, KTD	Date	September 2015	