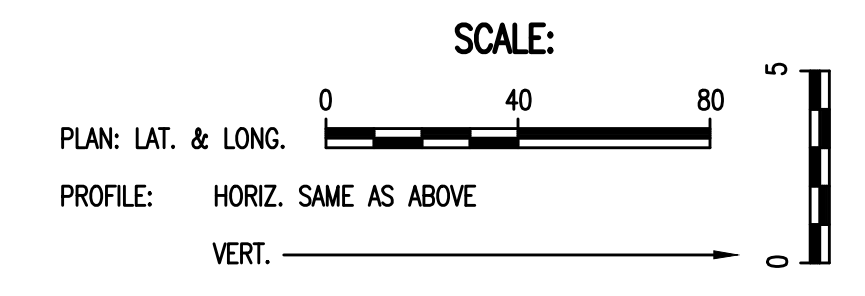
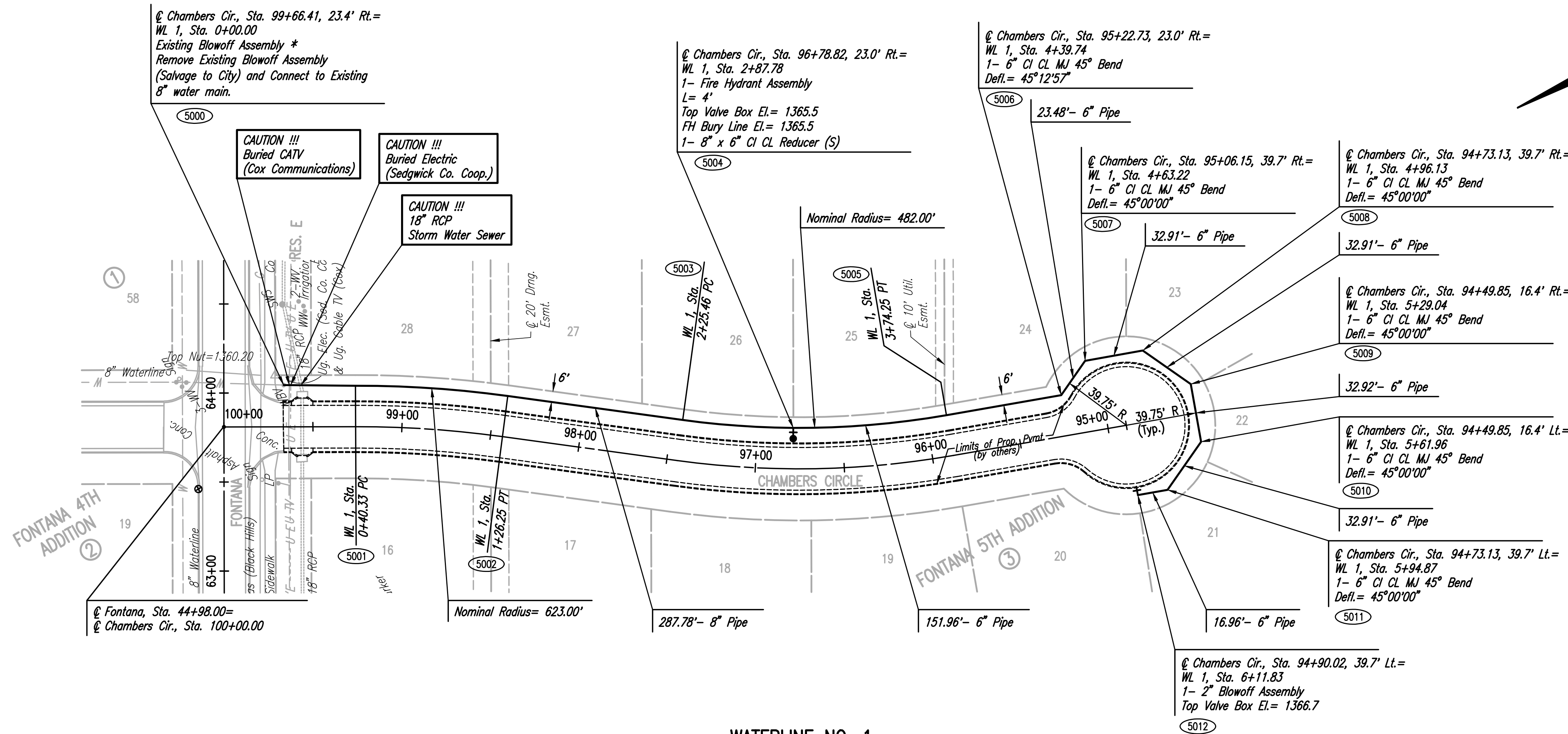


PLAN	CHECKED	DATE
	CHECKED	

PROFILE	CHECKED	DATE
	CHECKED	

Saved: 07-19-2016 5:18:15 PM by CSI
 Plot Scale: 1" = 10'-0" (Horizontal) 1" = 4'-0" (Vertical)
 U:\Projects\2015\15631\001\Drawings\15631-001-C08-WATERLINE NO. 1

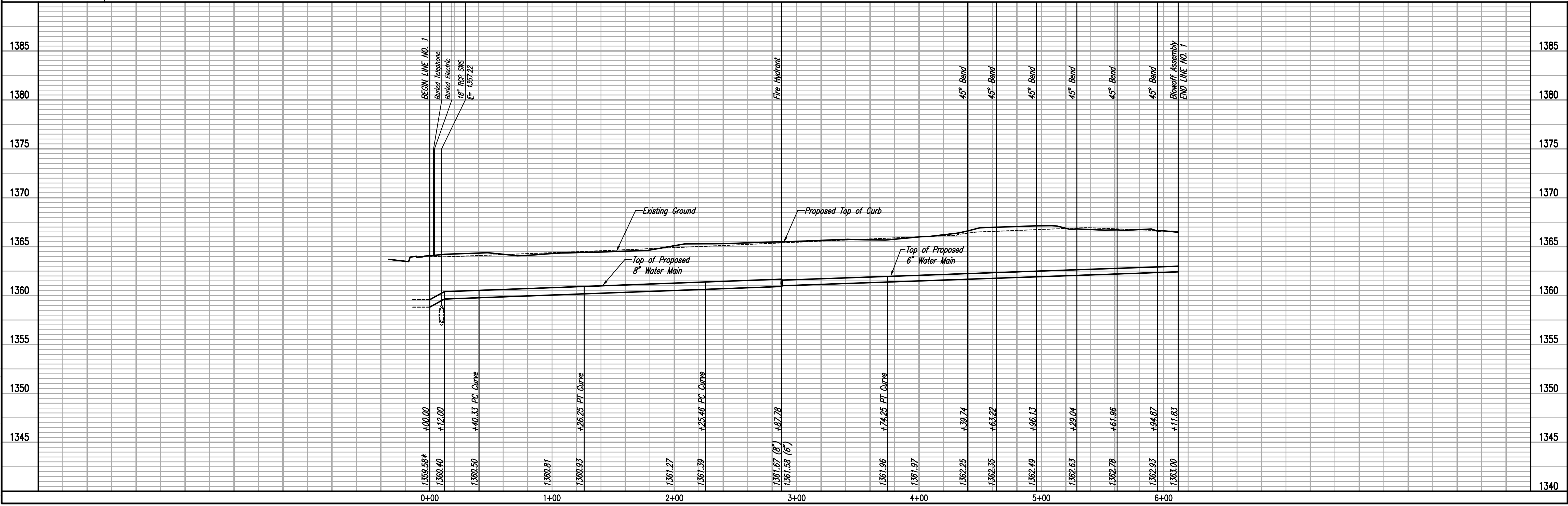


SCALE:
 PLAN: LAT. & LONG.
 PROFILE: HORIZ. SAME AS ABOVE
 VERT. _____

* PRIOR TO BEGINNING CONSTRUCTION, THE CONTRACTOR SHALL EXCAVATE THE EXISTING 8" WATERLINE AT WL 1, STA. 0+00.00 TO VERIFY PIPE SIZE, TYPE, FITTINGS, AND HORIZONTAL AND VERTICAL LOCATION. THE CONTRACTOR SHALL REPORT HIS FINDINGS TO THE ENGINEER SO THAT ANY NECESSARY PLAN MODIFICATIONS CAN BE MADE. ANY ADDITIONAL LABOR OR MATERIALS NECESSARY TO COMPLETE THE CONNECTION SHALL BE CONSIDERED SUBSIDIARY TO THE PROJECT.



WATERLINE NO. 1



Fontana 5th - Phase 1
 WATERLINE IMPROVEMENTS
 WATERLINE NO. 1

Designed By: MDK, SAD
 Drawn By: CSI, KTD

Job No.: 35-15631-001-0042
 Date: September 2015

GARY JANZEN, P.E. - CITY ENGINEER
 CITY OF WICHITA PROJECT NO. 448-90427

PROFESSIONAL ENGINEERING CONSULTANTS P.A.
 303 SOUTH TOPEKA WICHITA, KS 67202
 316-262-2691 www.pec1.com

Sheet 8 of 18