

See Sheet No. 5 for
Typical Section A-A

LEGEND

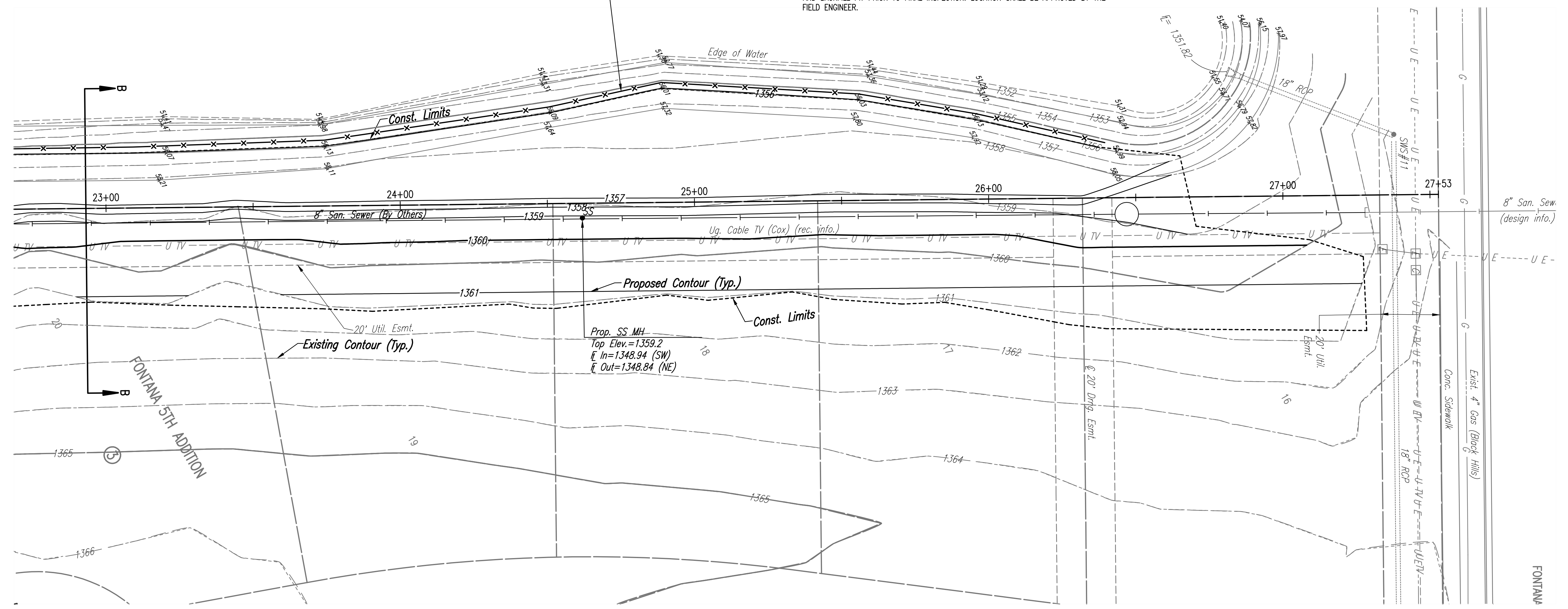
- x—x— SILT FENCE
- - -1257- - - EXISTING MINOR CONTOUR LINE
- - -1250- - - EXISTING MAJOR CONTOUR LINE
- - -1257- - - PROPOSED MINOR CONTOUR LINE
- - -1250- - - PROPOSED MAJOR CONTOUR LINE

GENERAL NOTES

1. CONTRACTOR SHALL INSTALL AND MAINTAIN EROSION PROTECTION THROUGHOUT THE ENTIRE PROJECT. THE FOLLOWING QUANTITIES ARE FOR INFORMATION ONLY, AND SHALL BE INCLUDED IN THE EROSION CONTROL LUMP SUM BID ITEMS FOR EACH RESPECTIVE PART. EROSION PROTECTION SHALL BE INCLUDED IN THE BID AS FOLLOWS:

STORM WATER DRAIN (468-84588)	
SILT FENCE BARRIER	1,073 L.F.
DITCH CHECKS	136 L.F.
2. THE EROSION CONTROL DEVICES SHOWN ON THIS SHEET ARE CONSIDERED MINIMUM STANDARDS. WHENEVER SEDIMENT ENTERS THE STREETS, STORM SEWERS, DITCHES, OR PONDS, CONTRACTOR WILL INSTALL ADDITIONAL DEVICES, AS NEEDED, TO CORRECT THE PROBLEM.
3. THE EROSION CONTROL DEVICES SHOWN HEREON MUST BE IN PLACE AT ALL TIMES DURING CONSTRUCTION UNTIL SUCH TIME AS THE SITE IS REESTABLISHED WITH PAVING OR GRASS. TEMPORARY OR PERMANENT SEEDING AND MULCH WILL BE INSTALLED WHEN EARTHWORK ACTIVITIES CEASE IN AN AREA FOR 14 DAYS OR MORE.
4. ANY MUD INADVERTENTLY TRACKED ONTO ANY STREET SHALL BE CLEANED UP BY THE CONTRACTOR, AT THE END OF EACH DAY'S WORK, OR AS DIRECTED BY THE FIELD ENGINEER.
5. CONTRACTOR TO FURNISH A TRUCK WASH-OUT PIT TO BE PLACED AT A CONVENIENT LOCATION THAT DOES NOT CONFLICT WITH CONSTRUCTION. CONTRACTOR SHALL CLEAN OUT AND BACKFILL PIT PRIOR TO FINAL INSPECTION. LOCATION SHALL BE APPROVED BY THE FIELD ENGINEER.

Silt Fence Barrier
See Sheet No. 8



Sowed: 07-13-2016 1:43:10 PM by GAGE SCHEER
 Plot Scale: 1" = 10' - 19-2016 4:31:24 PM by JAG
 U:\Wichita-Civil\2015\15631\Drawings\15631-003-SWD GRADING PLAN-SE PROPERTY

	No. _____ By _____ Date _____ FONTANA 5TH STORM WATER DRAIN NO. 357
	SWD GRADING PLAN-SE PROPERTY GARY JANZEN, P.E. - CITY ENGINEER CITY OF WICHITA PROJECT NO. 468-84588
	PROFESSIONAL ENGINEERING CONSULTANTS, P.A. 303 SOUTH TOPEKA WICHITA, KS 67202 316-262-2691 www.pec1.com
	Designed by JAG Job No. 31-15631-003 Drawn by BJS Date July 2016 SHT. 06 of 17