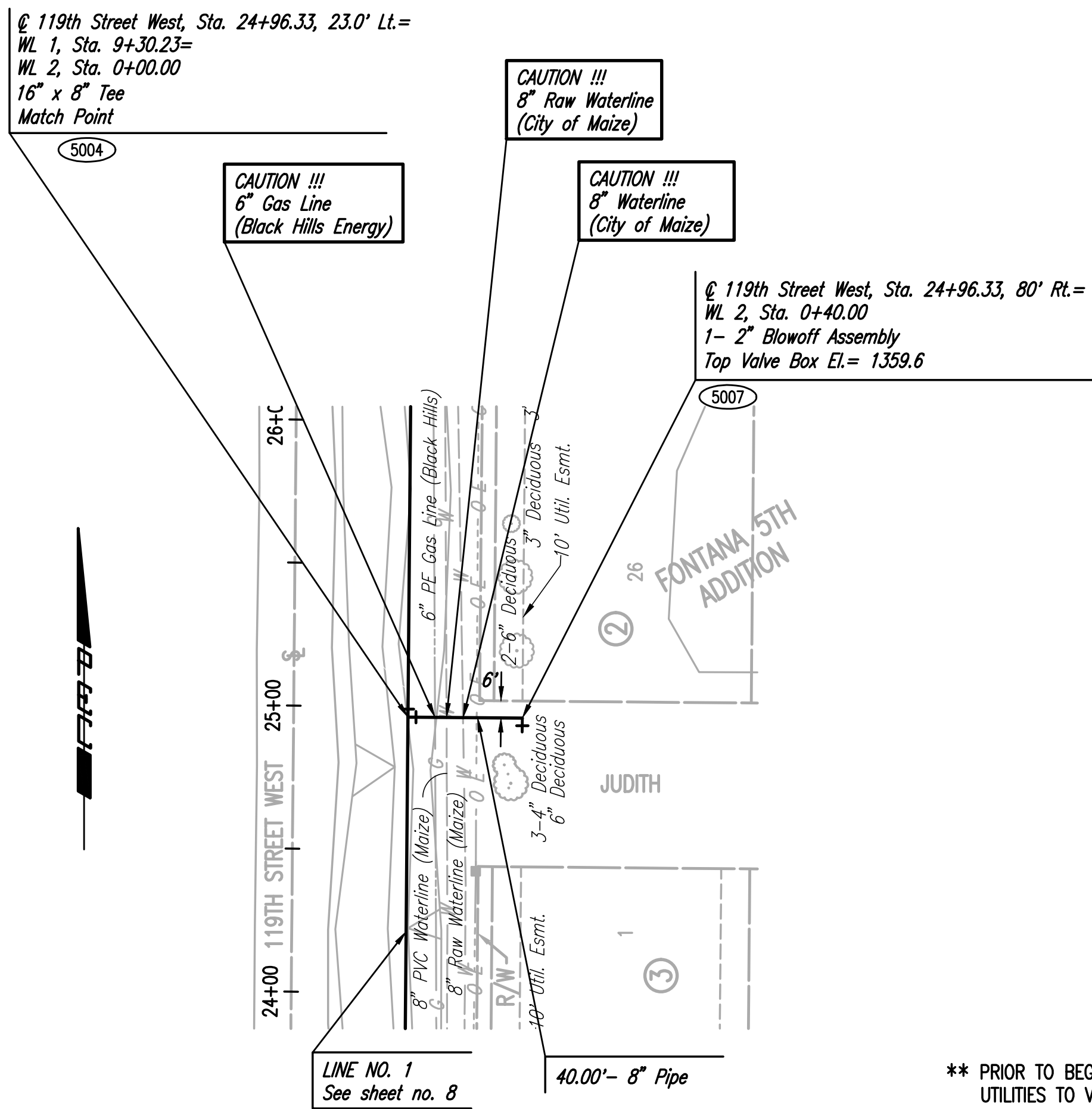


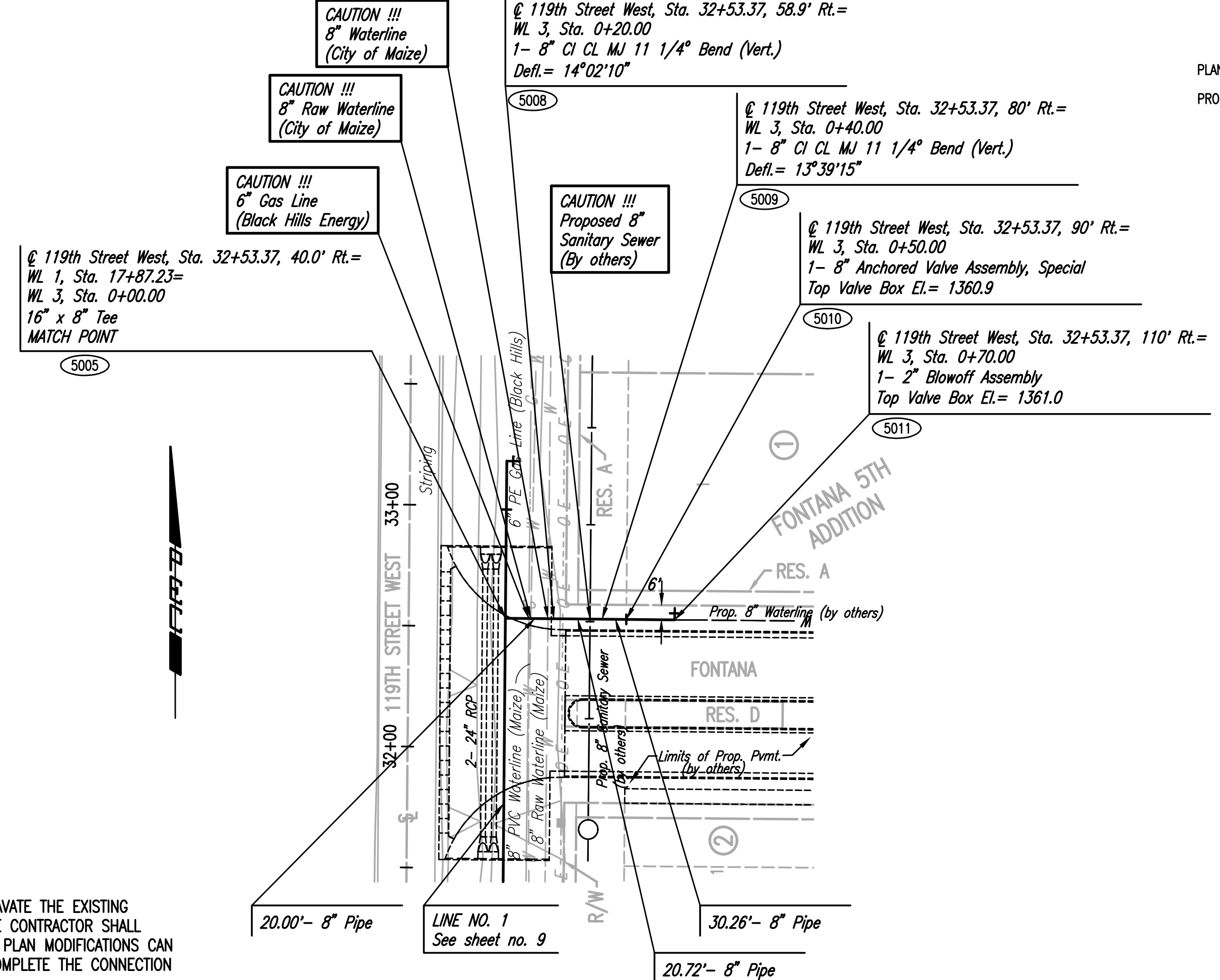
PLAN	CHECKED	BY	DATE
	CHECKED		

PROFILE	CHECKED	BY	DATE
	CHECKED		

Saved: 07-19-2016 1:45:19 PM by: CSI
 Plot Scale: 1" = 10'-0" (Horizontal) 1" = 10'-0" (Vertical)
 U:\Projects-Civil\2016\160046\Drawings\160046-000-C10 WATERLINE NO. 2 AND NO. 3

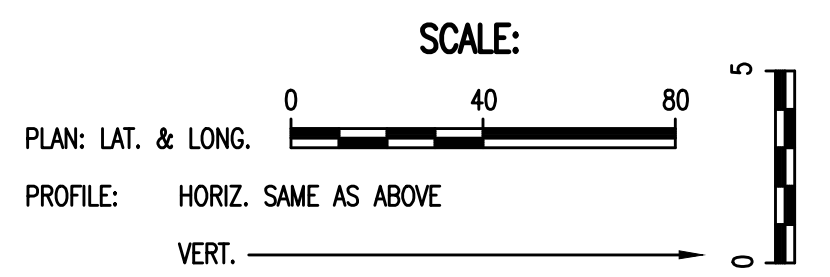
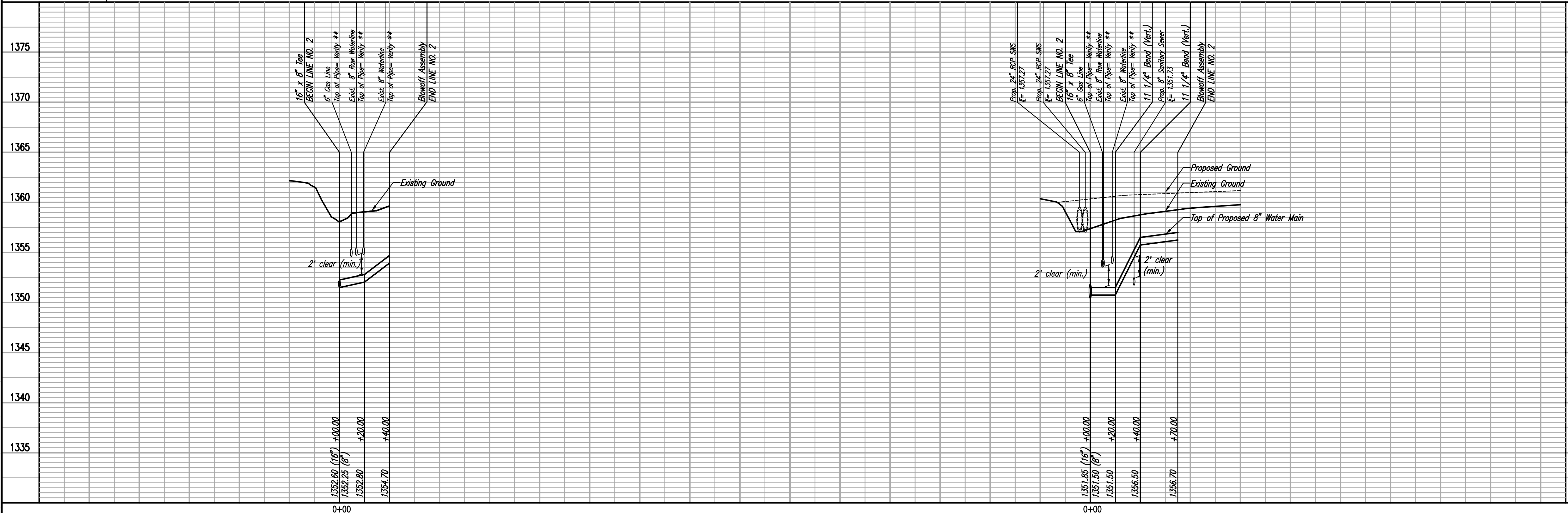


WATERLINE NO. 2



WATERLINE NO. 3

** PRIOR TO BEGINNING CONSTRUCTION, THE CONTRACTOR SHALL EXCAVATE THE EXISTING UTILITIES TO VERIFY PIPE HORIZONTAL AND VERTICAL LOCATION. THE CONTRACTOR SHALL REPORT HIS FINDINGS TO THE ENGINEER SO THAT ANY NECESSARY PLAN MODIFICATIONS CAN BE MADE. ANY ADDITIONAL LABOR OR MATERIALS NECESSARY TO COMPLETE THE CONNECTION SHALL BE CONSIDERED SUBSIDIARY TO THE PROJECT.



PEC
 PROFESSIONAL ENGINEERING CONSULTANTS P.A.
 303 SOUTH TOPEKA WICHITA, KS 67202
 316-262-2691 www.pec1.com

Job No. 35-160046-000-0042
 Date JANUARY 2016

Designed By MDK, SAD
 Drawn By CSL, KTD

16" WATERLINE IN 119TH ST. WEST, 29TH ST. N. TO FONTANA ST.
WATERLINE NO. 2 AND NO. 3

GARY JANZEN, P.E. - CITY ENGINEER
 CITY OF WICHITA PROJECT NO. 448-90715