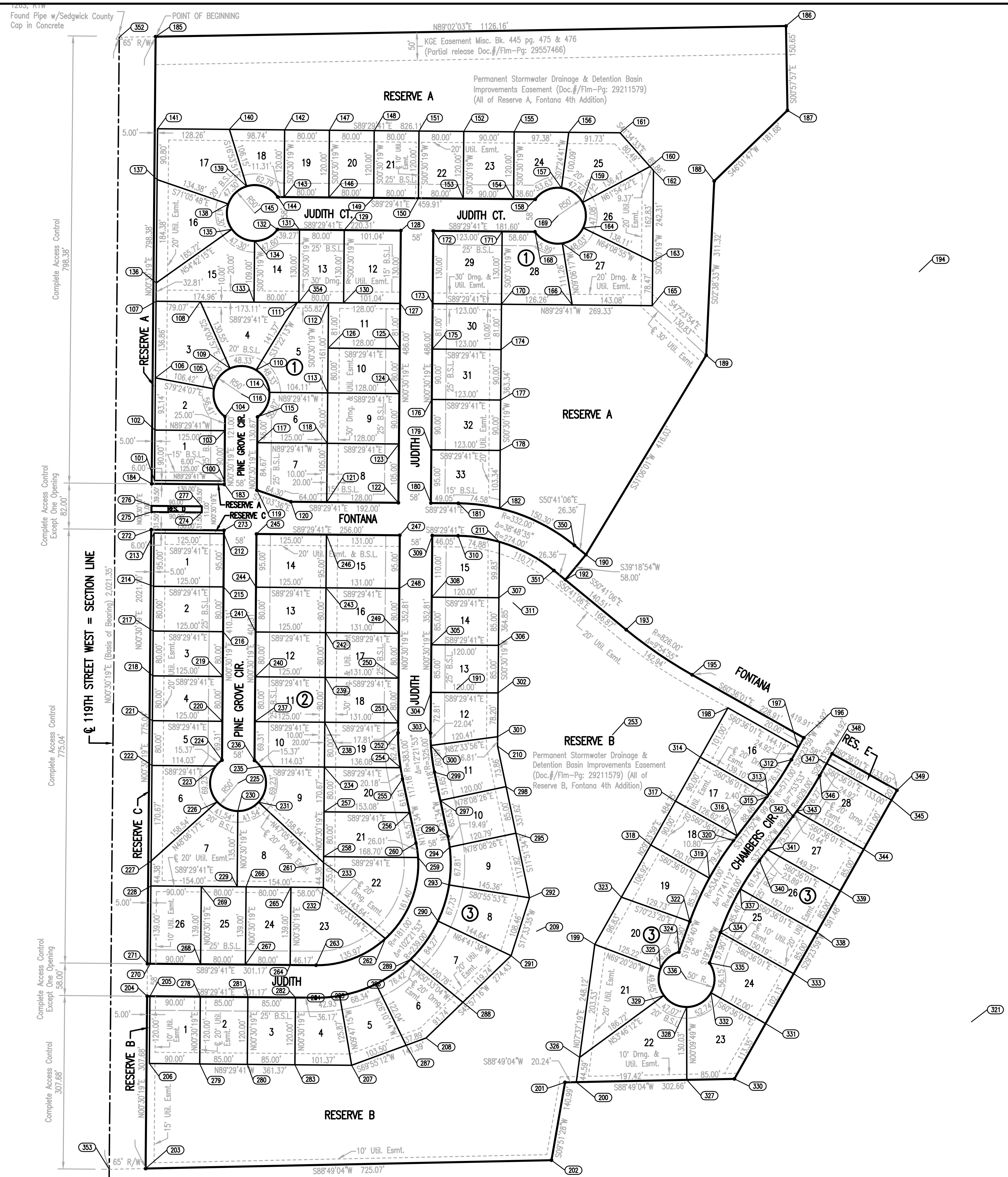
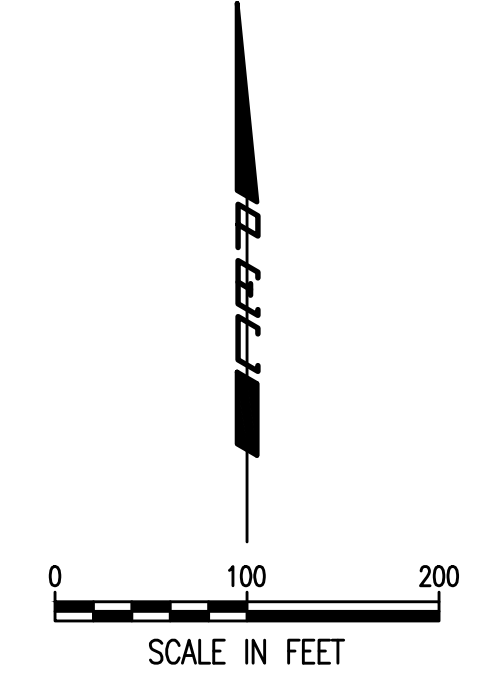


# FONTANA 5TH

AN ADDITION TO WICHITA, SEDGWICK COUNTY, KANSAS

## BUBBLE MAP



Sowed 03-21-2016 1:44:33 PM by KIRPITS/DEKAT  
 Plot Scale 1:1 07-19-2016 1:48:16 PM by KIRPITS/DEKAT  
 U:\Wichita-Civil\2016\160046\000\Wm\Drawings\160046-000-003-PLAT BUBBLE MAP (FONTANA 5TH ADDITION)

FOUND PIPE W/ SEDGWICK COUNTY CAP IN CONCRETE  
 POINT OF BEGINNING  
 165  
 166  
 167  
 168  
 169  
 170  
 171  
 172  
 173  
 174  
 175  
 176  
 177  
 178  
 179  
 180  
 181  
 182  
 183  
 184  
 185  
 186  
 187  
 188  
 189  
 190  
 191  
 192  
 193  
 194  
 195  
 196  
 197  
 198  
 199  
 200  
 201  
 202  
 203  
 204  
 205  
 206  
 207  
 208  
 209  
 210  
 211  
 212  
 213  
 214  
 215  
 216  
 217  
 218  
 219  
 220  
 221  
 222  
 223  
 224  
 225  
 226  
 227  
 228  
 229  
 230  
 231  
 232  
 233  
 234  
 235  
 236  
 237  
 238  
 239  
 240  
 241  
 242  
 243  
 244  
 245  
 246  
 247  
 248  
 249  
 250  
 251  
 252  
 253  
 254  
 255  
 256  
 257  
 258  
 259  
 260  
 261  
 262  
 263  
 264  
 265  
 266  
 267  
 268  
 269  
 270  
 271  
 272  
 273  
 274  
 275  
 276  
 277  
 278  
 279  
 280  
 281  
 282  
 283  
 284  
 285  
 286  
 287  
 288  
 289  
 290  
 291  
 292  
 293  
 294  
 295  
 296  
 297  
 298  
 299  
 300  
 301  
 302  
 303  
 304  
 305  
 306  
 307  
 308  
 309  
 310  
 311  
 312  
 313  
 314  
 315  
 316  
 317  
 318  
 319  
 320  
 321  
 322  
 323  
 324  
 325  
 326  
 327  
 328  
 329  
 330  
 331  
 332  
 333  
 334  
 335  
 336  
 337  
 338  
 339  
 340  
 341  
 342  
 343  
 344  
 345  
 346  
 347  
 348  
 349  
 350  
 351  
 352  
 353

		Revision By Date	
<b>WATER SUPPLY LINE</b> <b>16" WATERLINE IN 119TH ST. WEST, 29TH ST. N. TO FONTANA ST.</b> <b>PLAT BUBBLE MAP (FONTANA 5TH ADDITION)</b>			
GARY JANZEN, P.E. - CITY ENGINEER CITY OF WICHITA PROJECT NO. 448-90715			
<b>PEC</b> PROFESSIONAL ENGINEERING CONSULTANTS, P.A. 303 SOUTH TOPEKA WICHITA, KS 67202 316-262-2691 www.pec1.com			
Designed by	MDK, SAD	Job No.	35-160046-0-42
Drawn by	CSL, KTD	Date	JANUARY 2016
			Sht. 3 of 13