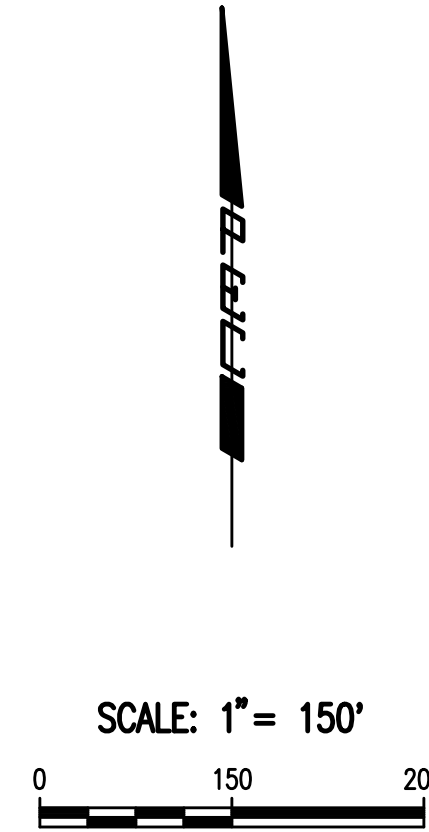
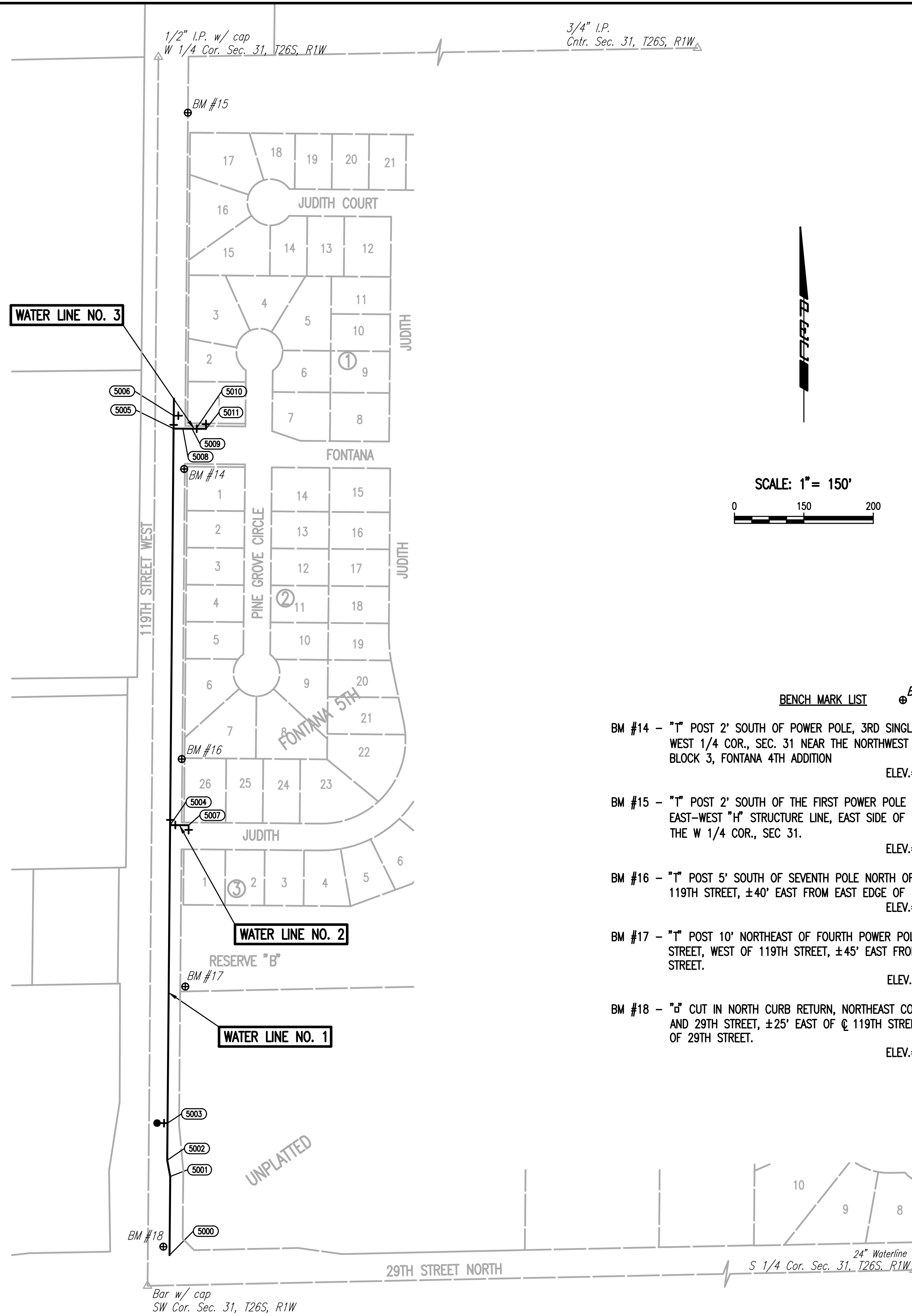


WATERLINE NO. 1 COORDINATE LIST				
POINT	NORTHING	EASTING	STATION	DESCRIPTION
5000	25,226.2340	14,766.8400	0+00.00	BLOWOFF
5001	25,396.2274	14,768.3393	1+70.00	BEND
5002	25,431.4939	14,761.6472	2+05.90	BEND
5003	25,511.4908	14,762.3525	2+85.90	HYDRANT
5004	26,155.7965	14,768.0336	9+30.23	TEE
5005	27,012.8067	14,775.5902	17+87.23	TEE
5006	27,040.8056	14,775.8370	18+07.23	BLOWOFF

WATERLINE NO. 2 COORDINATE LIST				
POINT	NORTHING	EASTING	STATION	DESCRIPTION
5004	26,155.7965	14,768.0336	0+00.00	TEE
5007	26,155.4438	14,808.0321	0+40.00	BLOWOFF

WATERLINE NO. 3 COORDINATE LIST				
POINT	NORTHING	EASTING	STATION	DESCRIPTION
5005	27,012.8067	14,775.5902	0+00.00	TEE
5008	27,012.6304	14,795.5894	0+20.00	BEND
5009	27,012.4540	14,815.5886	0+40.00	BEND
5010	27,014.3658	14,825.6059	0+50.00	VALVE
5011	27,012.1895	14,845.5875	0+70.00	BLOWOFF

5000 = COORDINATE POINT NO.
SEE SHEET NO. 3 AND 4 FOR PLAT COORDINATES



- BENCH MARK LIST**
- BM #14 - "T" POST 2' SOUTH OF POWER POLE, 3RD SINGLE POLE SOUTH OF THE WEST 1/4 COR., SEC. 31 NEAR THE NORTHWEST CORNER OF LOT 1, BLOCK 3, FONTANA 4TH ADDITION
ELEV.=1358.54 (NAVD88)
 - BM #15 - "T" POST 2' SOUTH OF THE FIRST POWER POLE SOUTH OF THE EAST-WEST "H" STRUCTURE LINE, EAST SIDE OF 119TH ±120' SOUTH OF THE W 1/4 COR., SEC 31.
ELEV.=1357.32 (NAVD88)
 - BM #16 - "T" POST 5' SOUTH OF SEVENTH POLE NORTH OF 29TH STREET, WEST OF 119TH STREET, ±40' EAST FROM EAST EDGE OF 119TH STREET.
ELEV.=1359.31 (NAVD88)
 - BM #17 - "T" POST 10' NORTHEAST OF FOURTH POWER POLE NORTH OF 29TH STREET, WEST OF 119TH STREET, ±45' EAST FROM EAST EDGE OF 119TH STREET.
ELEV.=1360.04 (NAVD88)
 - BM #18 - "σ" CUT IN NORTH CURB RETURN, NORTHEAST CORNER OF 119TH STREET AND 29TH STREET, ±25' EAST OF C. 119TH STREET, ±70' NORTH OF C. OF 29TH STREET.
ELEV.=1361.42 (NAVD88)

No.	Revision	By	Date
WATER SUPPLY LINE 16" WATERLINE IN 119TH ST. WEST, 29TH ST. N. TO FONTANA ST. WATERLINE BUBBLE MAP GARY JANZEN, P.E. - CITY ENGINEER CITY OF WICHITA PROJECT NO. 448-90715			
PROFESSIONAL ENGINEERING CONSULTANTS, P.A. 303 SOUTH TOPEKA WICHITA, KS 67202 316-262-2691 www.pec1.com			
Designed by	MDK, SAD	Job No.	35-160046-0-42
Drawn by	CSL, KTD	Date	JANUARY 2016

Sht. 5 of 13

Served 03-29-2016 12:24:05 PM by CSI
 Plot Scale 1:1 07-19-2016 1:48:57 PM by CSI
 U:\Wichita-Civil\2016\160046\000\Drawings\160046-000-005 WATERLINE BUBBLE MAP