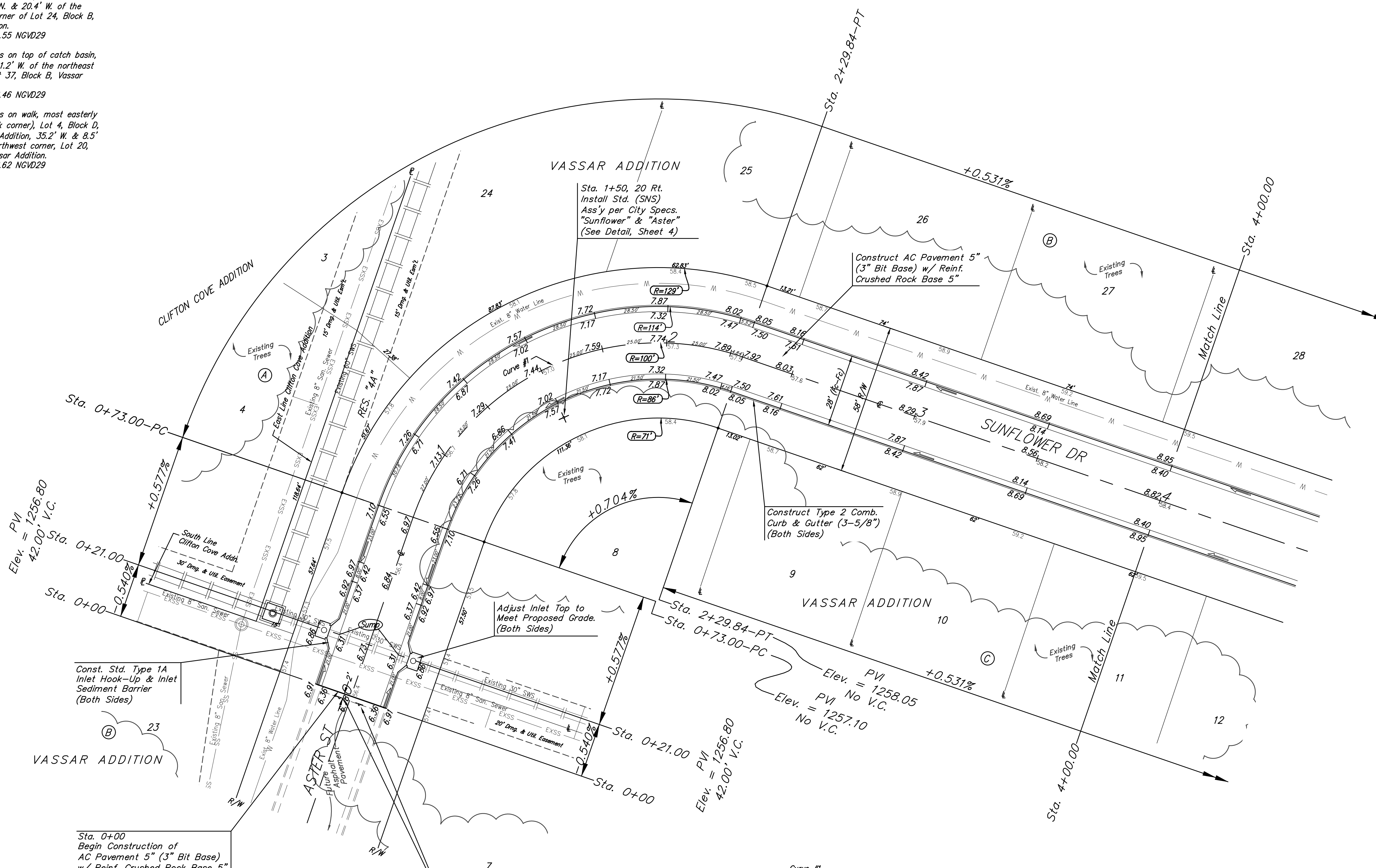
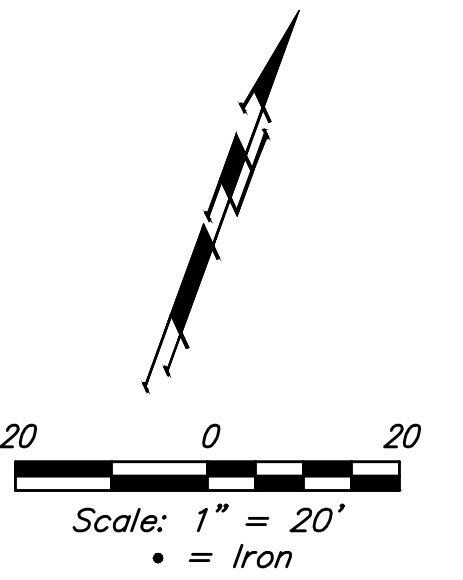


BENCHMARKS:
 Chiseled square on top of catch basin, 43.5' N. & 20.4' W. of the northwest corner of Lot 24, Block B, Vassar Addition.
 Elev. = 1259.55 NGVD29

Chiseled cross on top of catch basin, 48.2' N. & 41.2' W. of the northeast corner of Lot 37, Block B, Vassar Addition.
 Elev. = 1258.46 NGVD29

Chiseled cross on walk, most easterly corner, (block corner), Lot 4, Block D, Clifton Cove Addition, 35.2' W. & 8.5' S. of the northwest corner, Lot 20, Block B, Vassar Addition.
 Elev. = 1258.62 NGVD29



VALVE LOCATION TABLE

VALVE NUMBER	BASILINE STATION	OFFSET DISTANCE	OFFSET DIRECTION
1	7+56.14	23'	Lt.
2	11+13.87	21'	Lt.
3	0+07.00	72'	Lt.

Curve #1
 Curve Data Based on Centerline
 Rad. = 100' Delta = 89°51'52" Tangent = 99.76'
 Arc = 156.84' L.C. = 141.25' Def./Ft. = 17.18907 Min.

Station	Arc	Chord		Def.	Total Def.
		8' Left	8' Right		
0+73.00	—	—	—	0°00'00"	0°00'00"
0+75.00	2.00'	2.44'	1.56'	0°34'23"	0°34'23"
1+00.00	25.00'	30.42'	19.45'	7°09'43"	7°44'06"
1+25.00	25.00'	30.42'	19.45'	7°09'44"	14°53'50"
1+50.00	25.00'	30.42'	19.45'	7°09'43"	22°03'33"
1+75.00	25.00'	30.42'	19.45'	7°09'44"	29°13'17"
2+00.00	25.00'	30.42'	19.45'	7°09'44"	36°23'01"
2+25.00	25.00'	30.42'	19.45'	7°09'43"	43°32'44"
2+29.84	4.84'	5.90'	3.77'	1°23'12"	44°55'56"

Type 2 Comb. Curb & Gutter (3-5/8") to be constructed on the pavement on this sheet. Top of curb elevation are given for full height curb (6-5/8").



Baughman Vassar Addition - Phase I
SUNFLOWER
 Sta. 0+00 to Sta. 4+00.00

Baughman Company, P.A. 315 Ellis St. Wichita, KS 67211 P 316-262-7271 F 316-262-0149
 ENGINEERING | SURVEYING | PLANNING | LANDSCAPE ARCHITECTURE

PROJECT NUMBER 472-85256	DESIGN AEG	DRAWN JAK
REVISIONS:	APPROVED	DATE 7/05/16
	SCALE Noted	SHEET 7 OF 25

E:\Projects\Vassar Addition_1403P029\Engineering\Phase I\Sr_1601E376\STR PLANS.dwg