

# GENERAL NOTES:

- THE CONTRACTOR SHALL COMPLY WITH ALL APPLICABLE SAFETY REGULATIONS. ALL CONSTRUCTION SHALL BE COMPLETED FOLLOWING CURRENT CITY STANDARD SPECIFICATIONS AND SPECIAL PROVISIONS.
- THE CONTRACTOR WILL BE REQUIRED TO PROVIDE NOTICE TO UTILITY COMPANIES A MINIMUM OF SEVENTY-TWO (72) HOURS PRIOR TO ANY EXCAVATION, AS FOLLOWS:

KANSAS ONE-CALL 687-2470

THE CONTRACTOR MUST NOTIFY THE FOLLOWING IN CASE OF AN EMERGENCY:

- AT&T 1-800-246-8464
- BLACK HILLS ENERGY 1-800-694-8989
- CITY OF WICHITA WATER 1-316-268-4555
- CITY OF WICHITA SEWER 1-316-268-4073
- CITY OF WICHITA STORMWATER 1-316-268-4090
- CITY OF WICHITA TRAFFIC 1-316-268-4034
- COX COMMUNICATIONS 1-888-249-3530
- KANSAS GAS SERVICE 1-888-482-4950
- WESTAR ENERGY 1-800-544-4857

- UTILITY SERVICE LINES, POLES, ETC. ARE TO BE ADJUSTED AS NECESSARY BY OTHERS PRIOR TO CONSTRUCTION UNLESS THE PLANS SPECIFICALLY CALL FOR THEIR ADJUSTMENT BY THE CONTRACTOR OR UNLESS THE PLANS SPECIFICALLY IDENTIFY A UTILITY TO BE ADJUSTED BY ITS OWNER DURING CONSTRUCTION. EXISTING UTILITIES AND THEIR LOCATION, AS SHOWN ON THE PLANS, REPRESENT THE BEST INFORMATION OBTAINABLE FOR DESIGN. THE CONTRACTOR WILL BE REQUIRED TO WORK AROUND EXISTING UTILITIES WITHIN THE RIGHT-OF-WAY WHICH DO NOT CONFLICT WITH PROPOSED CONSTRUCTION.

- RUBBLE FROM THE REMOVAL OF MISCELLANEOUS STRUCTURES AND EXCESS EXCAVATION WHICH IS TO BE WASTED SHALL BE DISPOSED OF ON SITES TO BE PROVIDED BY THE CONTRACTOR. THESE SITES SHALL BE APPROVED BY THE ENGINEER AS TO SUITABILITY, APPEARANCE AND SITE LOCATION. LOCATIONS, IN THE OPINION OF THE ENGINEER, THAT WILL LEAVE AN UNSIGHTLY APPEARANCE WILL NOT BE APPROVED. ALL DISPOSAL SITES MUST BE APPROVED BY THE KANSAS DEPARTMENT OF HEALTH AND ENVIRONMENT. MATERIAL EITHER STOCKPILED OR DISPOSED OF IN A FLOOD PLAIN WILL REQUIRE A KANSAS STATE BOARD OF AGRICULTURE PERMIT. ANY MATERIAL DUMPED IN WATERS OF THE UNITED STATES OR WETLANDS IS SUBJECT TO U.S. CORPS. OF ENGINEERS PERMITTING REGULATIONS. ANY MATERIAL BURIED OR STOCKPILED BEYOND APPROVED CONSTRUCTION LIMITS WILL REQUIRE ADDITIONAL ARCHAEOLOGICAL INVESTIGATIONS UNLESS BURIED IN A PREVIOUSLY APPROVED BORROW LOCATION.

- TREES AND SHRUBS IN PUBLIC RIGHT-OF-WAY WHICH ARE IN DIRECT CONFLICT WITH PROPOSED NEW CONSTRUCTION SHALL BE REMOVED BY THE CONTRACTOR WITH THE ENGINEER'S APPROVAL. TREES AND SHRUBS WHICH ARE NOT IN DIRECT CONFLICT WITH PROPOSED NEW CONSTRUCTION SHALL BE SAVED AND PROTECTED FROM DAMAGE.

- THE CONTRACTOR SHALL GIVE ALL PROPERTY OWNERS AND/OR TENANTS OF DEVELOPED PROPERTY ADJUTING THE CONSTRUCTION OF THIS PROJECT A MINIMUM OF TEN (10) DAYS NOTICE PRIOR TO START OF CONSTRUCTION.

- THE CONTRACTOR SHALL BE RESPONSIBLE FOR PRESERVING PROPERTY IRONS. THE CONTRACTOR WILL BE REQUIRED TO RE-ESTABLISH ANY PROPERTY IRONS WHICH ARE DAMAGED OR DESTROYED BY HIS CONSTRUCTION OPERATIONS. SUCH IRONS SHALL BE RE-ESTABLISHED BY A LICENSED LAND SURVEYOR IN ACCORDANCE WITH STATE LAWS.

- THE WATER DISTRIBUTION DIVISION SHALL FIELD LOCATE WATER VALVES ONE TIME DURING CONSTRUCTION WHEN REQUESTED BY THE CONTRACTOR. IT SHALL BE THE CONTRACTOR'S RESPONSIBILITY TO PRESERVE SUCH FIELD LOCATIONS DURING THE CONSTRUCTION PROCESS. WATER VALVES, VALVE BOXES OR FIRE HYDRANTS DAMAGED DURING CONSTRUCTION SHALL BE REPAIRED BY CONTRACTOR AT HIS OWN EXPENSE. VALVE BOXES AND WATER METERS WITHIN THE PROJECT LIMITS SHALL BE ADJUSTED TO MATCH FIELD GRADES.

- THE CONTRACTOR SHALL NOTIFY THE CONSULTANT ENGINEER AND TOM MASON AT 316-268-4574 WITH THE CITY OF WICHITA WITH THE ANTICIPATED CONSTRUCTION START DATE AND NOTIFY THEM OF PROJECT COMPLETION. STAKING AND INSPECTION FOR THIS PROJECT WILL BE THE RESPONSIBILITY OF THE CONTRACTOR.

- IF TRAFFIC WILL BE IMPACTED BY CONSTRUCTION, A TRAFFIC CONTROL PLAN MUST BE SUBMITTED AND APPROVED BY THE CITY TRAFFIC ENGINEER, BRIAN COON AT TRAFFIC@WICHITA.GOV BEFORE CONSTRUCTION CAN BEGIN. THE CONTRACTOR SHALL BE RESPONSIBLE FOR ALL TRAFFIC CONTROL MEASURES TO FACILITATE CONSTRUCTION. ALL CONSTRUCTION ZONE MARKINGS AND SIGNAGE SHALL CONFORM TO THE LATEST VERSION OF THE MANUAL ON UNIFORM TRAFFIC CONTROL DEVICES (MUTCD) AS PUBLISHED BY THE U.S. DEPT. OF TRANSPORTATION, FEDERAL HIGHWAY ADMINISTRATION. ALL COSTS ASSOCIATED WITH CONSTRUCTION MARKINGS AND SIGNAGE SHALL BE THE CONTRACTOR'S RESPONSIBILITY.

- ALL ELEVATIONS SHOWN ARE NAVD 88.

- ALL AREAS DISTURBED DURING CONSTRUCTION THAT WILL NOT BE UNDER PROPOSED PAVEMENT SHALL BE RESTORED TO MATCH EXISTING CONDITIONS.

- ALL STUBS AND PLUGGED PIPES SHALL BE LOCATED WITH GREEN PLASTIC TAPE IN THE SAME MANNER AS RISERS.

- CONNECTING TO EXISTING MANHOLES: PRIOR TO LAYING SEWER LINES USING EXISTING STUBS IN EXISTING MANHOLES, THE CONTRACTOR SHALL EXPOSE AND VERIFY THE ELEVATION, GRADE AND ALIGNMENT OF EXISTING STUBS AND NOTIFY THE ENGINEER OF ANY DEVIATION FROM THE PLANS. WHERE CONNECTION TO AN EXISTING MANHOLE THAT DOES NOT HAVE AN EXISTING STUB OR THE STUB IS UNUSABLE DUE TO ELEVATION GRADE OR ALIGNMENT, THE CONTRACTOR SHALL CORE CUT INTO EXISTING MANHOLE WALL TO MAKE CONNECTION USING APPROVED WATER STOP GASKET, AND RESHAPE THE EXISTING MANHOLE INVERT TO PROVIDE SMOOTH FLOW. THE COST TO CONNECTING TO EXISTING MANHOLES IS INCIDENTAL TO THE PROJECT.

- THE CONTRACTOR SHALL LIMIT THE EXTENT OF TRENCH OPEN OVERNIGHT AND WEEKENDS TO LESS THAN 50 FEET.

- THE CONTRACTOR SHALL PROVIDE POSITIVE DRAINAGE AWAY FROM ALL MANHOLE COVERS.

- THE CONTRACTOR SHALL PREVENT ANY CONSTRUCTION DEBRIS FROM ENTERING THE EXISTING SANITARY SEWER DURING CONSTRUCTION.

- THE CONTRACTOR SHALL BE RESPONSIBLE FOR MAINTAINING CONTINUOUS FLOW OF SEWAGE THROUGH CONSTRUCTION. CONTRACTOR'S PROPOSED METHOD FOR MAINTAINING SEWAGE FLOW SHALL BE SUBMITTED AND APPROVED BY THE SEWER MAINTENANCE DIVISION (316-268-4073) PRIOR TO STARTING AND BY-PASSING OF SEWAGE FLOWS.

- ANY OVER EXCAVATION FROM MANHOLE AND PIPE REMOVAL SHALL BE BACKFILLED WITH AB-3 COMPACTED TO 90-95% ASTM D698.

- CITY MAINTENANCE OF SANITARY SEWER MAINS ENDS AT LAST STRUCTURE WITHIN THE EASEMENT OR RIGHT-OF-WAY OR LINE.

- ANY SIDEWALK, DRIVE APPROACH, CURB, OR STREET PAVEMENT REMOVED TO CONSTRUCT PROJECT MUST HAVE A PAVEMENT CUT PERMIT AND BE REPLACED BY THE CITY CONTRACTOR. PERMITS CAN BE OBTAINED BY CALLING 316-268-4501 OR 316-268-4480.

- SITE PREPARATION AND RESTORATION SHALL BE SUBSIDIARY TO THE PROJECT.

- THE CONTRACTOR SHALL PROVIDE ALL TESTING AND SHOP DRAWING REVIEW. INSPECTION, TESTING AND SHOP DRAWING DOCUMENTS SHALL BE PROVIDED TO THE ENGINEERING FIRM FOR RECORDS.

- THE CONTRACTOR SHALL USE BEST MANAGEMENT PRACTICES (BMP'S) TO PREVENT ERODED SOIL FROM ENTERING DITCHES, CULVERTS, AND DRAINAGE AREAS. THE CONTRACTOR SHALL FOLLOW THE INTENT OF THE BMP'S WHICH ACT AS A GUIDELINE.

- EACH BIDDER SHALL VISIT THE SITE OF THE PROJECT BEFORE SUBMITTING A PROPOSAL IN ORDER TO BECOME BETTER INFORMED OF THE EXISTING FIELD CONDITIONS AND OBSTACLES WHICH MIGHT BE ENCOUNTERED DURING CONSTRUCTION. EACH BIDDER SHOULD UNDERSTAND THAT NO ADDITIONAL COMPENSATION WILL BE AWARDED FOR EXTRA WORK THAT SHOULD HAVE BEEN EVALUATED PRIOR TO BIDDING.

- EXISTING UTILITIES AND THEIR LOCATIONS, AS SHOWN ON THE PLANS REPRESENT THE BEST INFORMATION OBTAINABLE FOR DESIGN. LOCATION INFORMATION HAS BEEN OBTAINED FROM VARIOUS COMPANIES AND IS EITHER FROM COMPANY UTILITY DRAWINGS OR COMPANY PROVIDED FIELD LOCATIONS. THE PLAN LOCATIONS SHOWN ARE NOT GUARANTEED. ADDITIONAL EXISTING UTILITIES MAY BE ENCOUNTERED.

- ANY AND ALL UTILITY SYSTEM COMPONENTS DAMAGED DURING CONSTRUCTION SHALL BE REPAIRED AT THE CONTRACTOR'S EXPENSE.

- ALL TRENCHING IN PAVEMENT OR DRIVEWAYS, WHICH WILL BE REQUIRED TO CARRY TRAFFIC UNTIL PERMANENT PAVING REPLACEMENT, SHALL BE TOPPED WITH A MINIMUM OF 6" CRUSHED ROCK (COMPACTED) TO BE INCIDENTAL TO THE PROJECT. CONTRACTOR SHALL BE REQUIRED TO MAINTAIN TEMPORARY CRUSHED ROCK UNTIL PERMANENT PAVEMENT IS INSTALLED.

- THE PRECAST MANUFACTURER SHALL PROVIDE A SEALED DESIGN DETAIL FOR ALL PRECAST ITEMS USED ON THE PROJECT TO INSURE THE INTENT OF THE PLANS ARE MET.

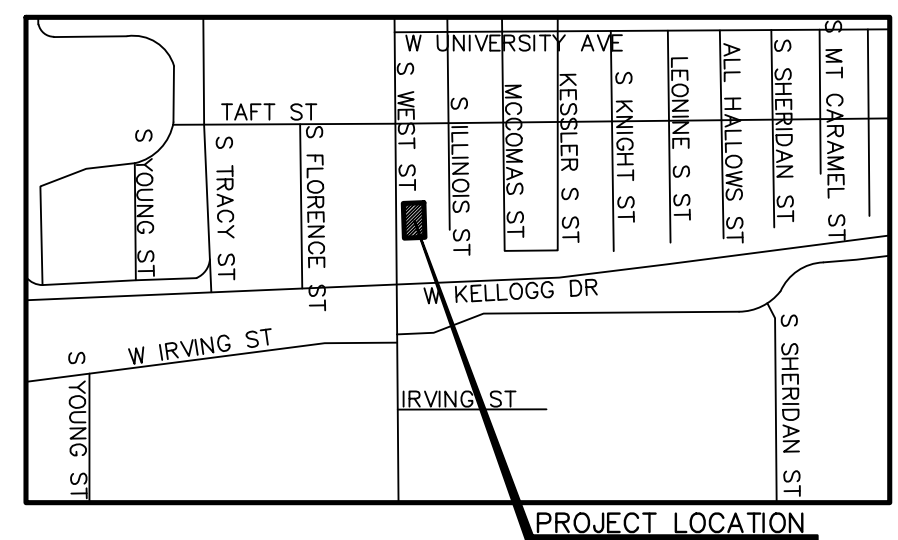
EXISTING TOPOGRAPHIC AND BOUNDARY SURVEY COMPLETED BY OTHERS.

CITY OF WICHITA STANDARD DETAILS FOR EROSION CONTROL BMP'S ARE AVAILABLE THROUGH CITY OF WICHITA WEB SITE OR AS REQUESTED FROM PROJECT ENGINEER.

# SANITARY SEWER TO SERVE LOTS 8-10 EUREKA GARDENS ADDITION CITY OF WICHITA, KANSAS

GARY JANZEN, P.E. CITY ENGINEER  
PROJECT NUMBER 2281PPS (607861)

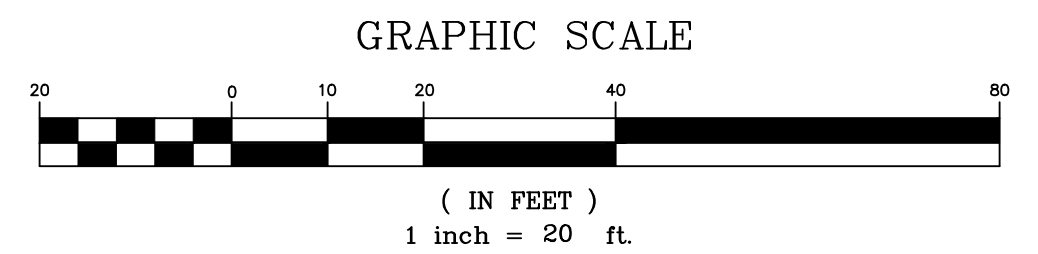
T. Mason - City of Wichita, Inspector  
Release Date: 08/03/2016  
: apr 08/19/2016



## VICINITY MAP

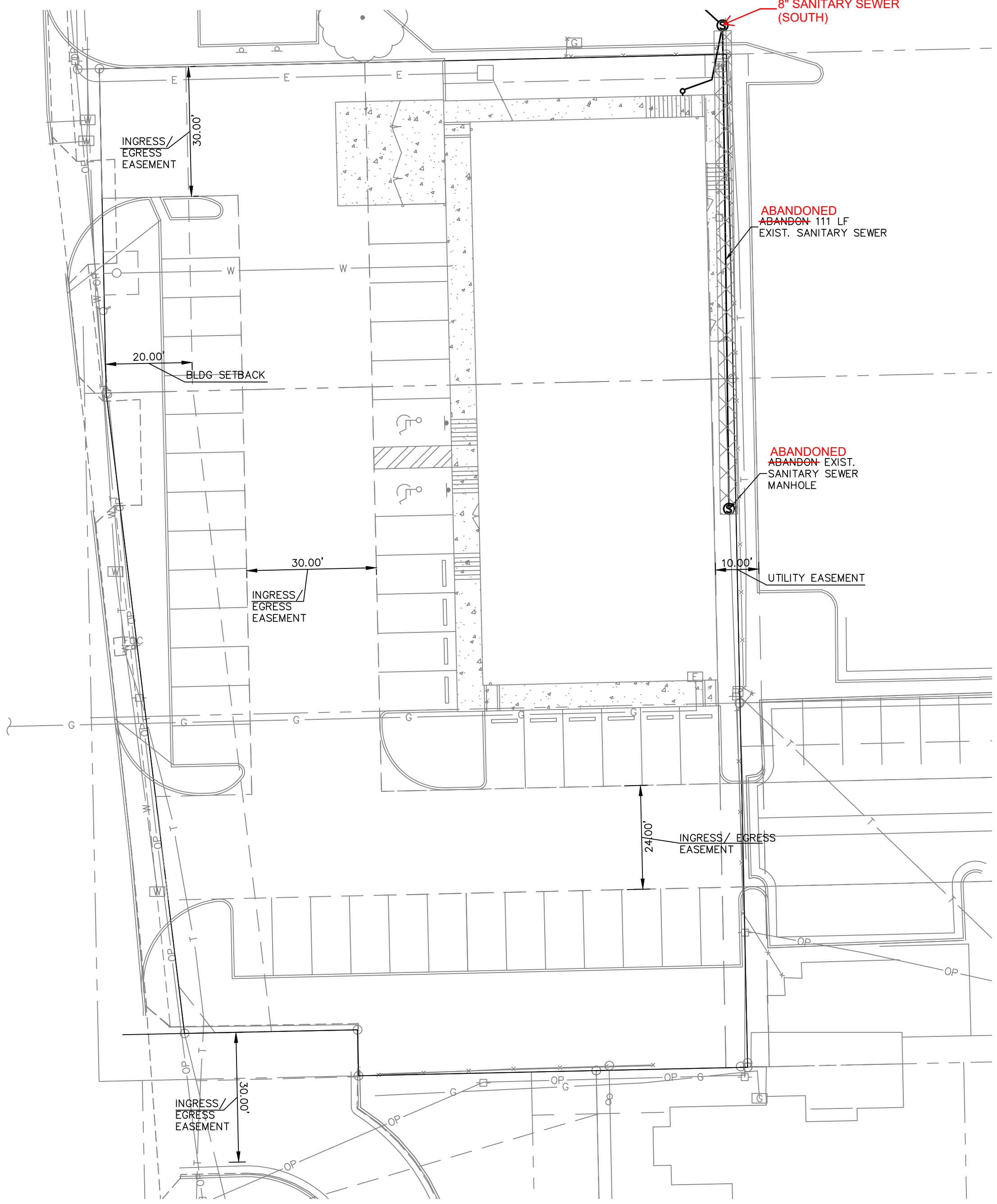
## SHEET INDEX

TITLE SHEET	1
SANITARY DETAILS	2-3
PLAT	4



INSPECTOR: SCOTT SERVIS  
CONTRACTOR: BOB THE SEWER GUY  
SUPERINTENDENT: BOB  
COMPANY: CITY OF WICHITA  
DATE: 7-13-2016

JULY 2016



## LEGAL DESCRIPTION

LOT 8, EXCEPT THE WEST 5 FEET FOR HIGHWAY C.C. 84C- 2867, BLOCK 1, EUREKA GARDENS TO SEDGWICK COUNTY, KANSAS.  
AND  
LOT 9, EXCEPT THAT PART TAKEN FOR HIGHWAY C.C. 84C-2867, BLOCK 1, EUREKA GARDENS TO SEDGWICK COUNTY, KANSAS.  
AND  
LOT 10, EXCEPT THAT PART TAKEN FOR HIGHWAY C.C. 84C-2867, BLOCK 1, EUREKA GARDENS TO SEDGWICK COUNTY, KANSAS.

## BENCHMARKS

BM #1: CROSS CHISELED IN CONCRETE 10.6' OF N. SOUTHERNMOST SE CORNER SUBJECT PROPERTY. ELEV. = 1305.31 (NAVD 88)  
BM #2: N. RIM OF SANITARY SEWER MANHOLE, N OF NE PROP. CORNER ELEV. = 1305.84 (NAVD 88)

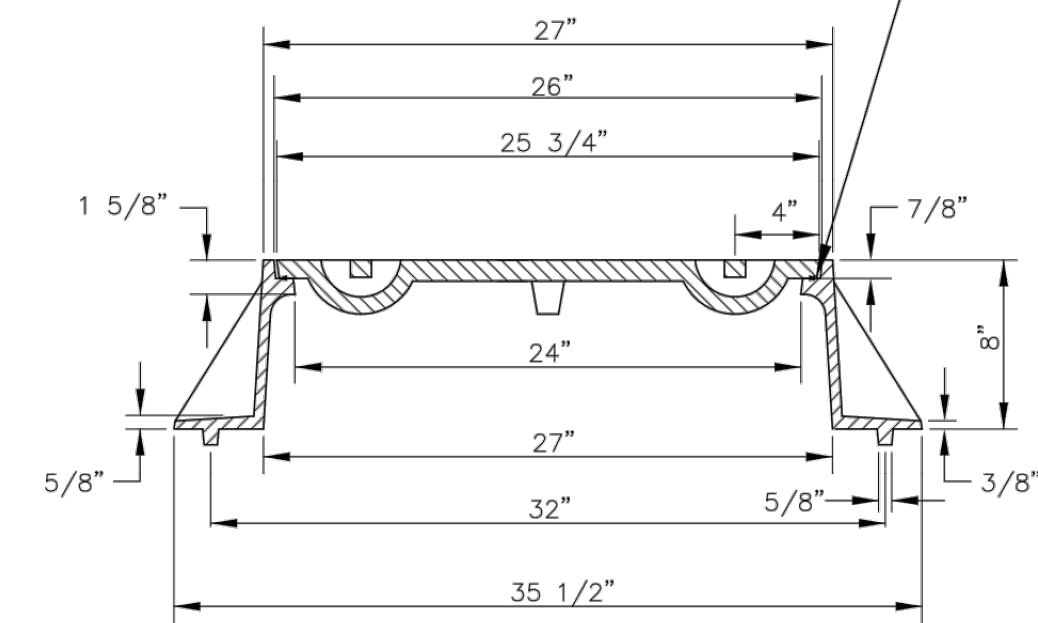
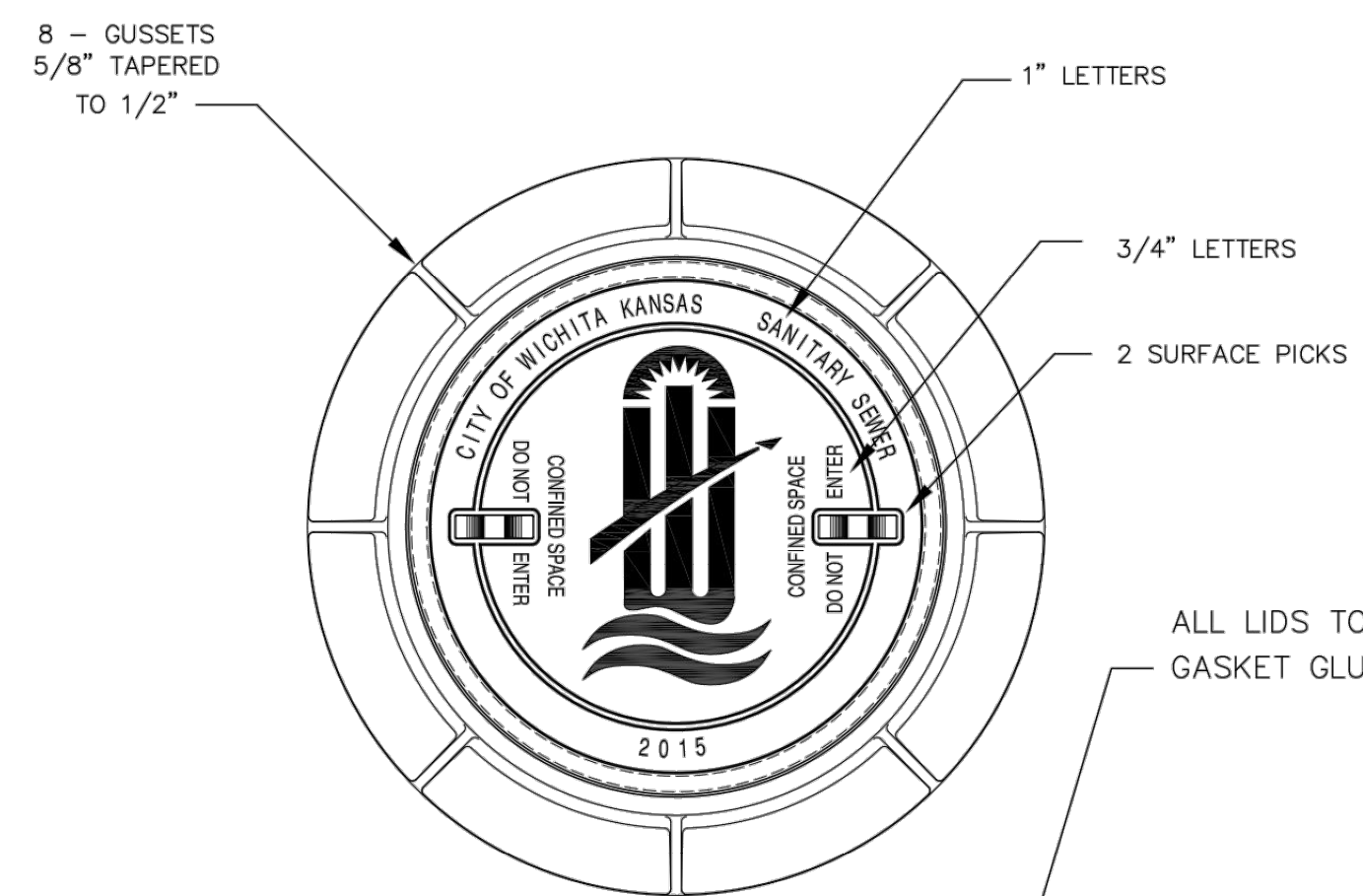


PROJ. NO. G14\_0016-4 DSN: SRS  
CFN: 0016-4PPS DWN: EAM

200 N. EMPORIA, SUITE 100  
WICHITA, KANSAS 67202  
PH. (316) 440-4304 | FAX (316) 440-4309  
wh@kveeng.com | www.kveeng.com

**KAW VALLEY ENGINEERING**

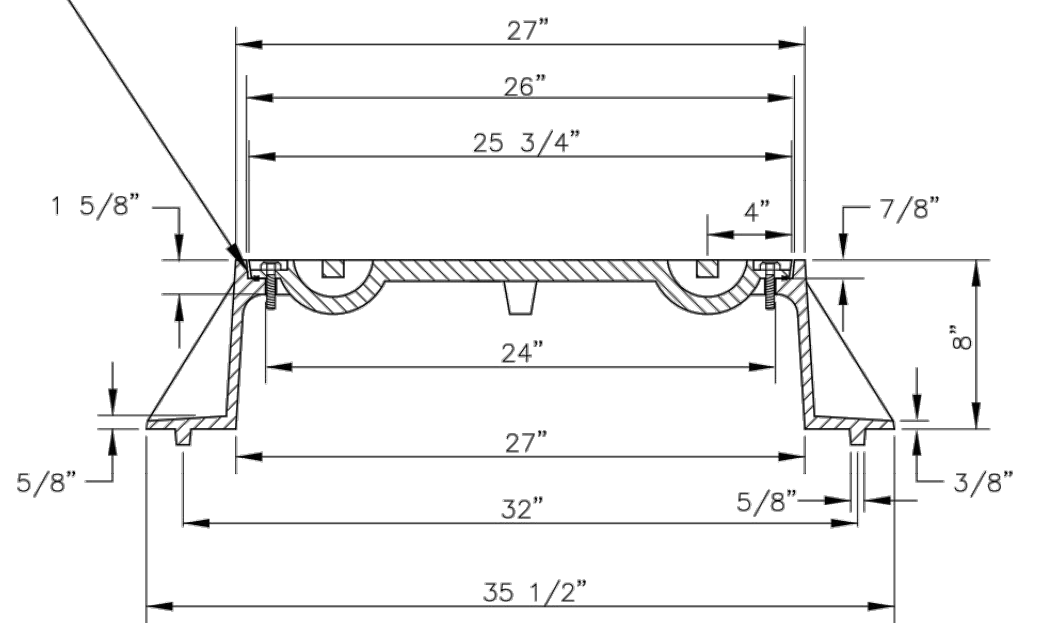
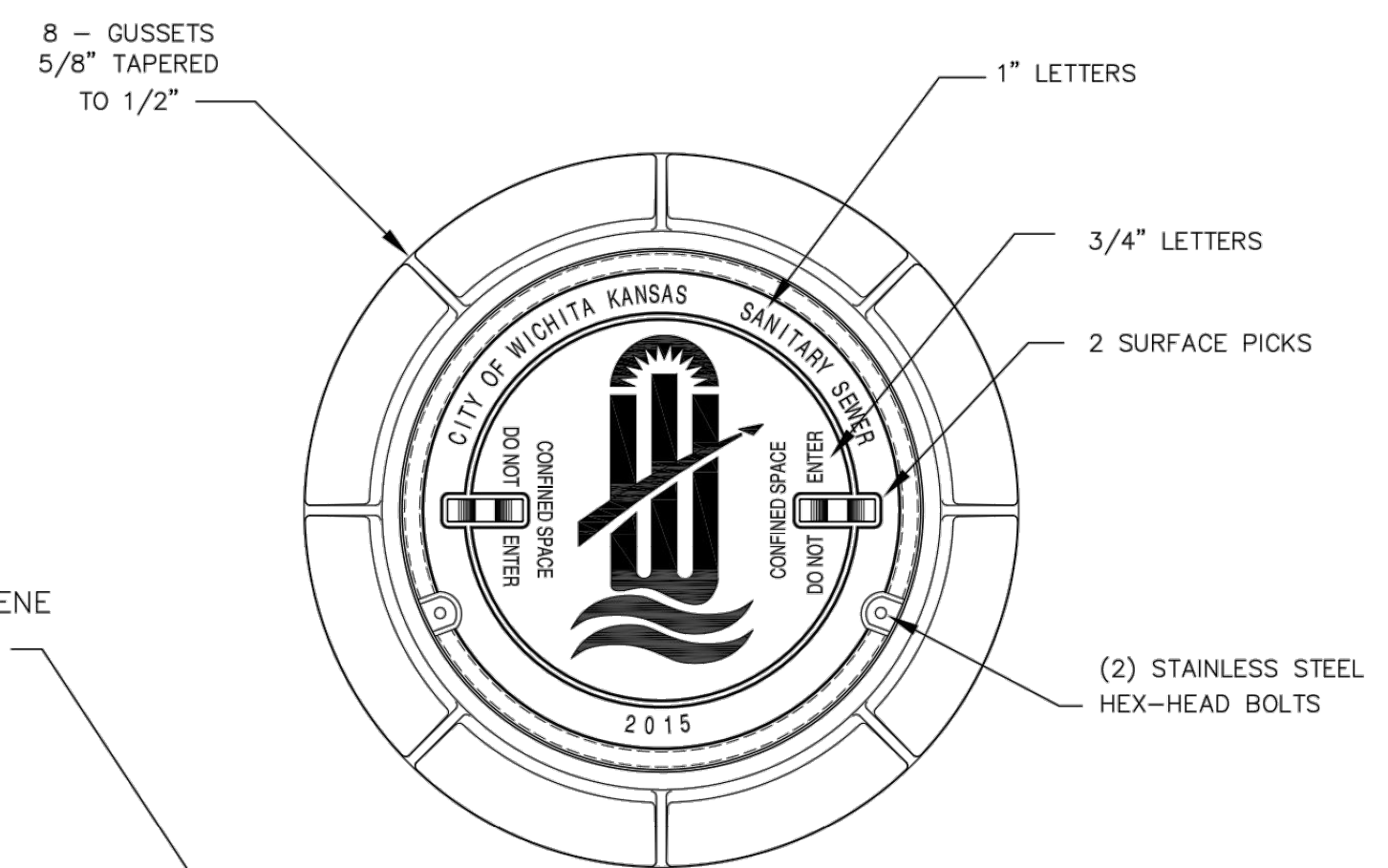
KAW VALLEY ENGINEERING, INC. IS AUTHORIZED TO OFFER ENGINEERING SERVICES BY KANSAS STATE CERTIFICATE OF AUTHORIZATION # E-113. EXPIRES 12/31/16



STANDARD MANHOLE FRAME & COVER

DEETER #1261 OR EJIW #1936-Z1

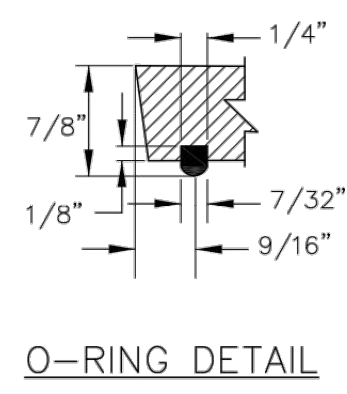
NOTE:  
1. FURNISHED WITH MACHINED HORIZONTAL BEARING SURFACE.



BOLT DOWN MANHOLE FRAME & COVER

DEETER #1261 OR EJIW #1936-Z1

NOTE:  
1. FURNISHED WITH MACHINED HORIZONTAL BEARING SURFACE.



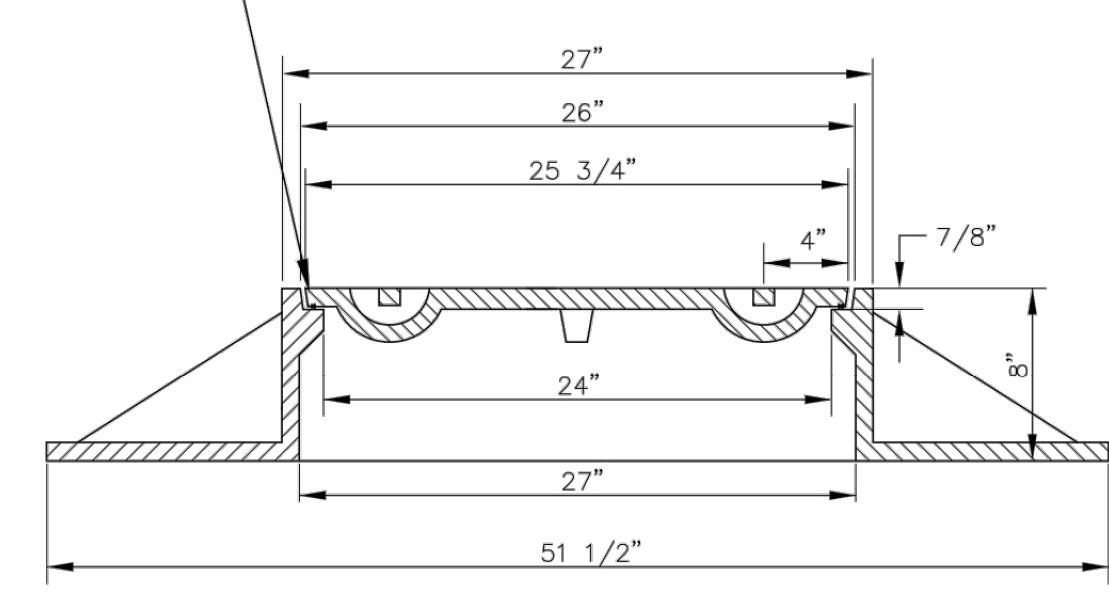
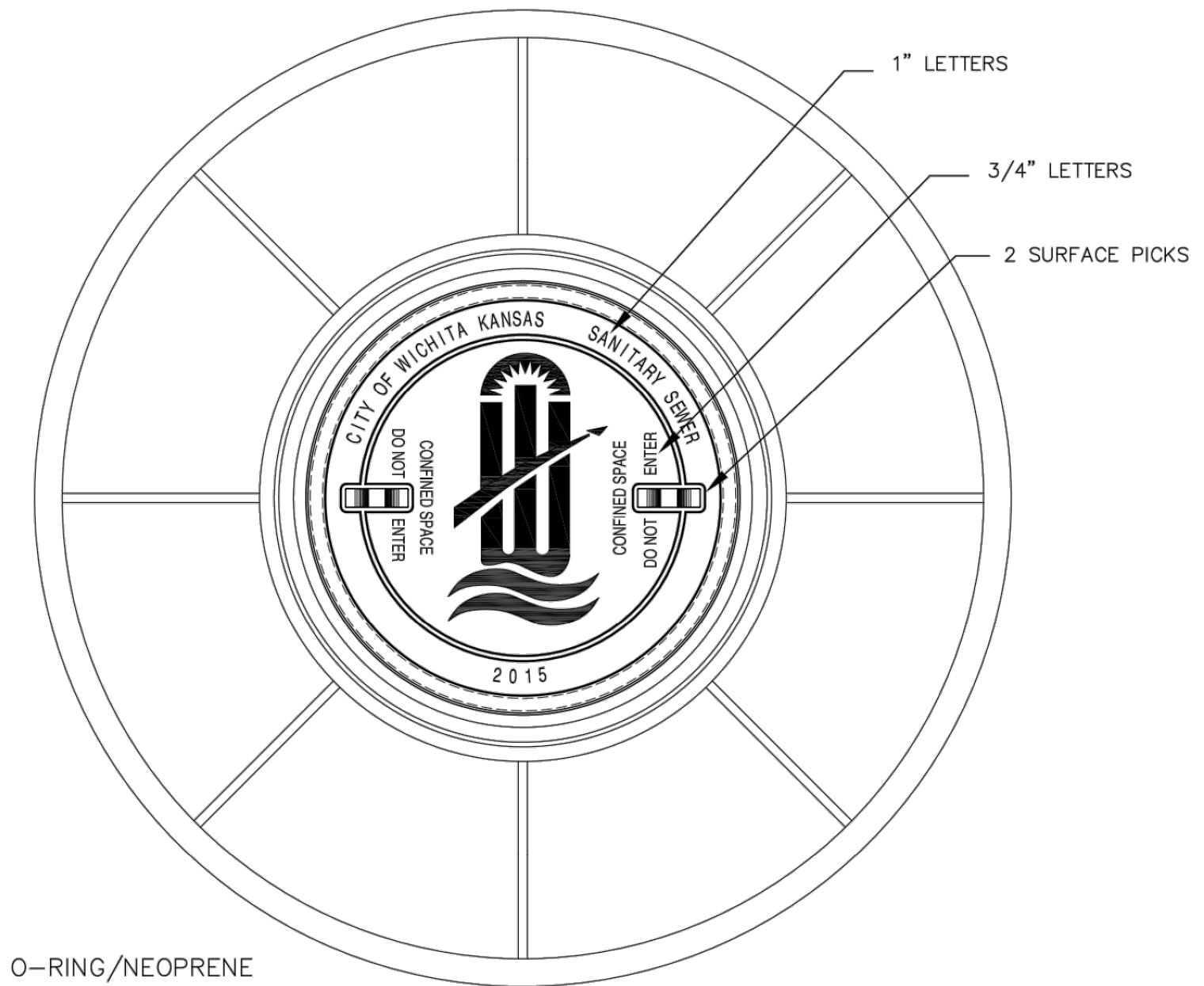
O-RING DETAIL

GENERAL NOTES

- MANHOLE CASTINGS SHALL BE MANUFACTURED USING GOOD QUALITY GRAY IRON CONFORMING TO CLASS 30 OF A.S.T.M. DESIGNATION A-48. DIMENSIONS SHOWN ON THE DETAILED DRAWINGS SHALL BE CONSIDERED AS MINIMUM REQUIREMENTS AND ANY DEVIATIONS FROM THE DIMENSIONS SHOWN MUST BE SPECIFICALLY APPROVED. THE FINISHED CASTINGS SHALL BE OF UNIFORM QUALITY, FREE FROM BLOWHOLES, POROSITY, HARD SPOTS, SHRINKAGE DISTORTIONS OR OTHER DEFECTS.
- MANHOLE CASTINGS SHALL BE MANUFACTURED SUCH THAT A COVER MANUFACTURED BY ANY ONE FOUNDRY WILL FIT INTERCHANGEABLY INTO A FRAME MANUFACTURED BY ANOTHER FOUNDRY AND STILL MEET ALLOWABLE CLEARANCES AND NON-ROCKING REQUIREMENTS. THIS WILL REQUIRE MANUFACTURING OF THE MATCHING FACES ON THE COVER AND THE FRAME TO CLOSE TOLERANCES.
- THE OUTSIDE CIRCUMFERENCE OF THE VERTICAL FACE OF THE COVER AND THE INSIDE CIRCUMFERENCE OF THE VERTICAL FACE IN THE FRAME RECESS SHALL BE MANUFACTURED TO TOLERANCES SUCH THAT THE CLEARANCE BETWEEN THE COVER AND FRAME WILL NOT EXCEED 1/8" AT ANY POINT AROUND THE CIRCUMFERENCE OF THE COVER. THE SEATING SURFACES BETWEEN THE COVER AND FRAME SHALL BE MACHINED SUCH THAT THESE SEATING SURFACES SHALL MAKE FULL CONTACT FOR THEIR FULL CIRCUMFERENCE TO PRECLUDE THE COVER FROM ROCKING IN THE FRAME.
- THE MANHOLE FRAME AND COVER SHALL BE MARKED WITH LETTERING INDICATING THE NAME OF THE MANUFACTURER AND THE YEAR WHEN THE COVER OR FRAME WAS CAST. THE COVER SHALL BE FURTHER IDENTIFIED WITH REGARDS TO OWNERSHIP USING LETTERS AT LEAST 1" IN HEIGHT. THIS IDENTIFICATION SHALL BE "CITY OF WICHITA SANITARY SEWER". THE TOP SURFACE OF THE COVER SHALL BE MANUFACTURED IN WITH CITY OF WICHITA DESIGN AS INDICATED ON THE DRAWINGS. SMOOTH BLOCKOUTS SHALL BE UTILIZED TO HIGHLIGHT THE LETTERING ON THE COVER SURFACE. THE TOTAL AREA OF SMOOTH SURFACE BLOCKOUT SHALL NOT EXCEED THE AREA AS INDICATED ON THE DRAWING. POSITIONING OF SMOOTH BLOCKOUTS AND LETTERING MAY VARY FROM THAT SHOWN ON THE DETAILED DRAWING.

ALL LIDS TO BE FURNISHED WITH O-RING/NEOPRENE GASKET GLUED IN THE COVER BEARING SURFACE.

ALL LIDS TO BE FURNISHED WITH O-RING/NEOPRENE GASKET GLUED IN THE COVER BEARING SURFACE.



WIDE FLANGED FRAME & COVER

DEETER #1261A

NOTE:  
1. FURNISHED WITH MACHINED HORIZONTAL BEARING SURFACE.



REVISD: MARCH 2016		
<b>MANHOLE FRAME AND COVER (SANITARY SEWER)</b>		
CITY ENGINEER <b>GARY JANZEN, P.E.</b>		
PROJECT NUMBER	OCA NUMBER	DATE
CITY ENGINEER'S OFFICE		SHEET
CITY HALL - SEVENTH FLOOR 455 NORTH MAIN STREET WICHITA, KANSAS 67202-1620 (314) 268-4501		

SS-102

VERIZON WIRELESS 620 S. WEST ST WICHITA, KANSAS	STANDARD DETAILS	PROJ. NO. G14_0016-4	CHK
		DESIGNER SRS	EAM
		CFN 0016-4DET	DSN
		SHEET 02	CHK
		DATE 4-28-16	REV 0
		DESCRIPTION PRELIM SET FOR COW REVIEW	REV 0

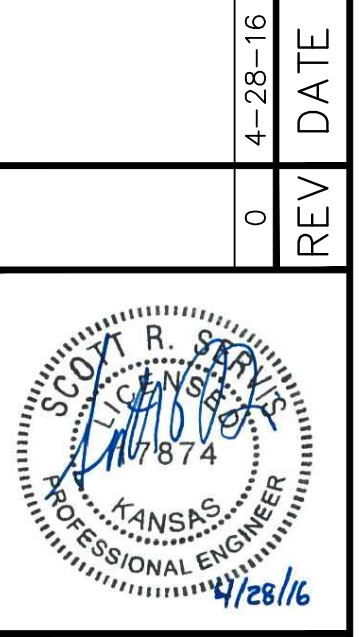


SCOTT R. SERVIS  
ENGINEER  
KS # 17874

200 N. EMPORIA, SUITE 100  
PH. (316) 440-4304 | FAX (316) 440-4309  
www.kveeng.com | info@kveeng.com  
**KAW VALLEY ENGINEERING**  
KAW VALLEY ENGINEERING, INC. IS AUTHORIZED TO OFFER ENGINEERING SERVICES BY KANSAS STATE CERTIFICATE OF AUTHORIZATION # E-113. EXPIRES 12/31/16

CHK	CHK
EAM	DWN
SRS	DSN

PRELIM SET FOR COW REVIEW	DESCRIPTION
4-28-16	DATE
0	REV

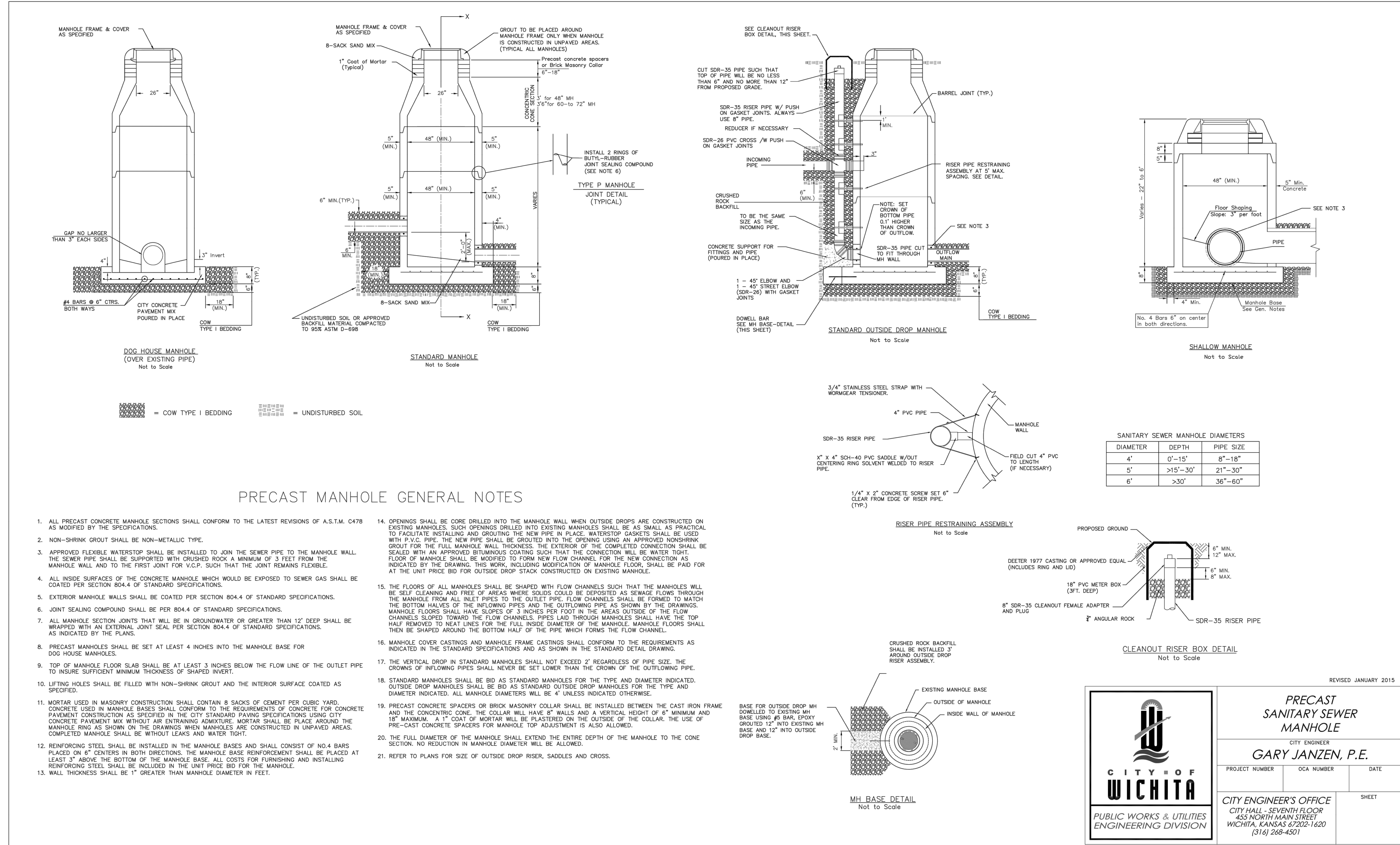


SCOTT R. SERVIS  
ENGINEER  
KS # 17874

200 N. EMPORIA, SUITE 100  
PH. (316) 440-4304 | FAX (316) 440-4309  
www.kaveg.com | www.kvweng.com  
**KAW VALLEY ENGINEERING**  
KAW VALLEY ENGINEERING, INC. IS AUTHORIZED TO OFFER ENGINEERING SERVICES BY KANSAS STATE CERTIFICATE OF AUTHORIZATION # E-113. EXPIRES 12/31/16

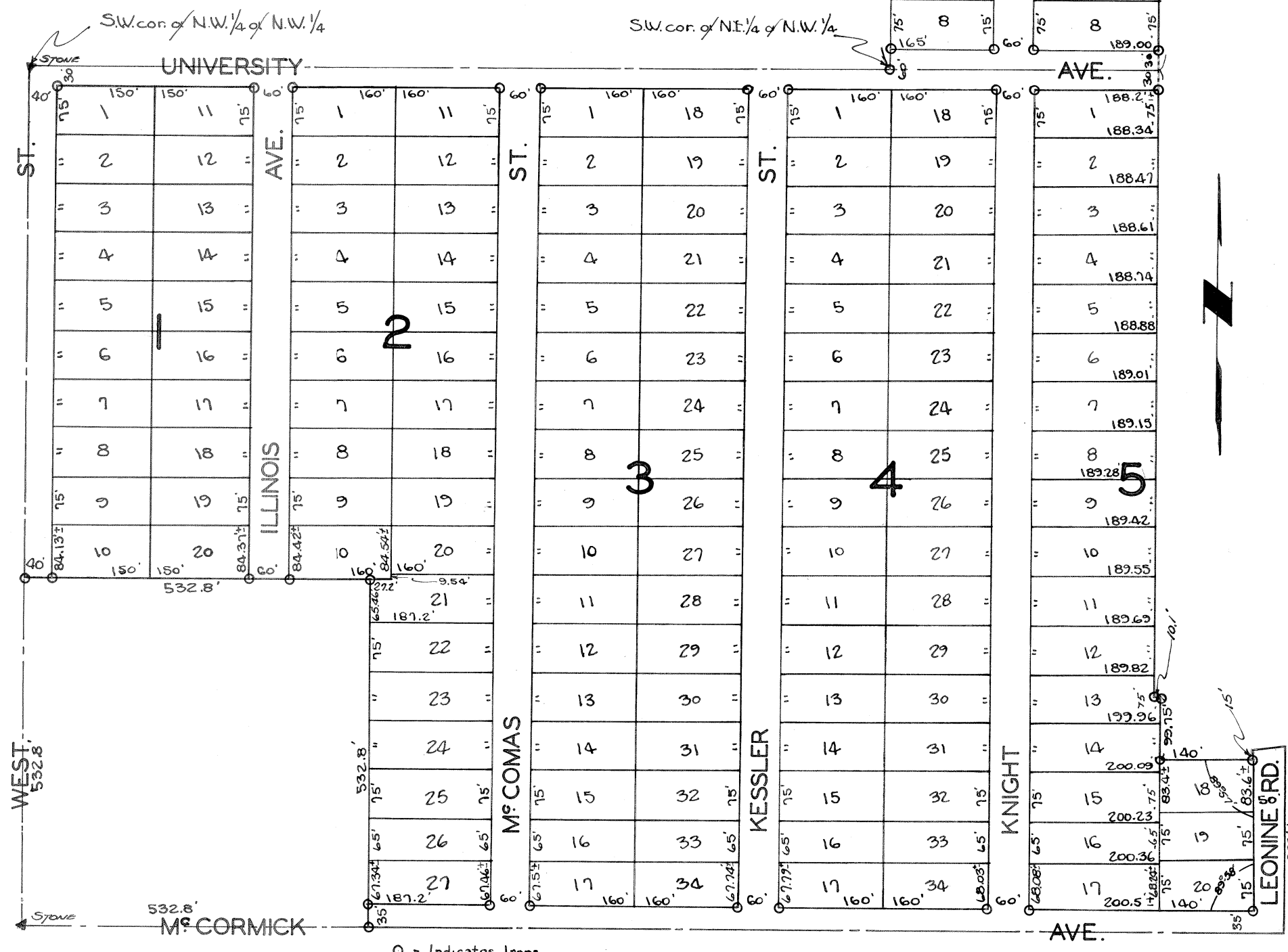
**VERIZON WIRELESS**  
620 S. WEST ST  
WICHITA, KANSAS  
**STANDARD DETAILS**

PROJ. NO.	G14-0016-4
DESIGNER	SRS
CFN	0016-4DET
SHEET	03
DRAWN BY	EAM
REV	0



# EUREKA GARDENS

TO  
SEDGWICK COUNTY, KANSAS.



State of Kansas } ss. Clyde M. Baughman County Surveyor  
County of Sedgwick }  
in and for said County and State, do hereby certify that I have surveyed and platted Eureka Gardens, Sedgwick County, Kansas and that the accompanying plat is a true and correct exhibit of the property as surveyed described as follows: Beginning at the S.W. corner of NW 1/4 of NW 1/4 of section 25, T. 27 S., R. 1 W. of the 6th P.M. thence south to a point 532.6 feet north of the S.W. corner of said NW 1/4 thence east parallel with the south line of said NW 1/4, 532.6 feet, thence east on the one-half section line to a point 700 feet west of the S.E. corner of said NW 1/4, thence north parallel with the east line of said NW 1/4, 289 feet more or less to the south right-of-way line of the Wichita and Western Railroad, now abandoned, thence southwesterly along said right-of-way to a point 700 feet west of the east line of said NW 1/4, thence north parallel with the east line of said NW 1/4, 15 feet, thence west parallel with the north line of said NW 1/4, 140 feet, thence north parallel with the east line of said NW 1/4, 93.75 feet more or less to the north right-of-way line of said abandoned railroad, thence southwesterly along said right-of-way to a point 300 feet west of the east line of said NW 1/4, thence north parallel with the east line of said NW 1/4, to the north line of the south half of the said NW 1/4, thence west to the place of beginning, and platted into blocks 1, 2, 3, 4, 5. Also, Beginning at the S.W. corner of NE 1/4 of NW 1/4 of section 25, T. 27 S., R. 1 W. thence north along the west line of said NE 1/4 of the NW 1/4 to a point 300 feet west of the east line of said NW 1/4, thence south parallel with the east line of said NW 1/4, to the north line of south half of the said NW 1/4, thence west to the place of beginning, platted into blocks 6 and 7.  
Clyde M. Baughman County Surveyor

Know all men by these presents that I, H.B. Dugan, individually, and as attorney in fact for Francis J. Dugan, John J. Dugan and Rose A. Dugan, his wife and Maurice L. Dugan and Martha Dugan, his wife, said power of attorney having been executed on June 10, 1931, and recorded in Misc. Record 39, page 309 Sedgwick County, Kansas, and H.B. Dugan as attorney in fact for Catherine Dugan, wife of Francis J. Dugan and Nancy Dugan, wife of H.B. Dugan, said power of attorney having been executed on September 14, 1934, and recorded in Misc. Record 111, page 194, Sedgwick County, Kansas, have caused the land described in the surveyors certificate to be platted into blocks, lots, streets, avenues and a road to be known as Eureka Gardens, Sedgwick County, Kansas. An easement is hereby granted on the rear 25 feet of lots 10 and 21 block 2, the rear 15 feet of lots 13 and 14 block 5 and the rear 5 feet of all other lots for the construction and maintenance of all public utilities.  
H.B. Dugan, Attorney in fact  
R. B. Dugan  
June Entered on Transfer Record this 3<sup>rd</sup> day of June 1941  
Charles J. Cartwright County Clerk

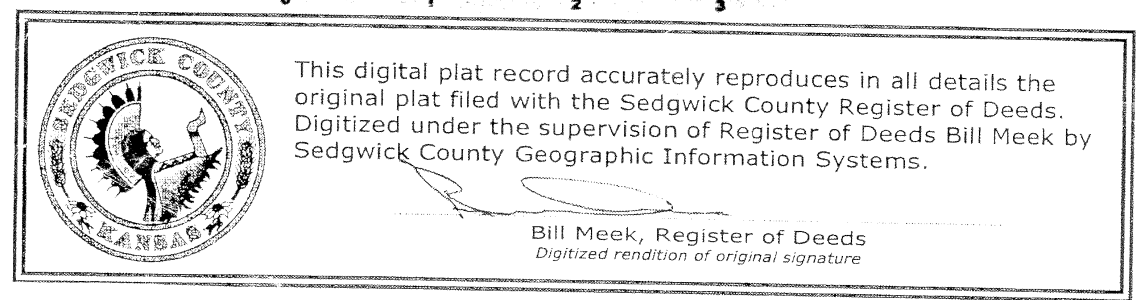
Release of Restrictions M-617 Pg. 487

State of Kansas } ss. I do remember that on  
County of Sedgwick } this 20<sup>th</sup> day of May 1941, before me a  
Notary Public in and for said county and state came  
H.B. Dugan individually, and as attorney in fact for  
Francis J. Dugan, John J. Dugan and Rose A. Dugan  
his wife, and Maurice L. Dugan and Martha Dugan  
his wife, said power of attorney having been executed  
on June 10, 1931 and recorded in Misc. Record 39 page  
309, Sedgwick County, Kansas, and H.B. Dugan as an  
attorney in fact for Catherine Dugan, wife of  
Francis J. Dugan and Nancy Dugan wife of H.B. Dugan  
said power of attorney having been executed on  
September 14, 1934, and recorded in Misc. Record  
111 page 194, Sedgwick County, Kansas, to me known  
to be the same person who executed the foregoing  
instrument of writing and duly acknowledged the  
execution of the same as his voluntary act and deed  
V. P. Blount Notary Public  
My Commission expires Nov. 19, 1941.

This plat of Eureka Gardens Sedgwick County, Kansas, has been submitted to and considered by the planning Commission of the City of Wichita, Kansas, and is hereby transmitted to the Board of City Commissioners of the City of Wichita, Kansas with the recommendation that such plat be approved as proposed.  
Dated this 2<sup>nd</sup> day of May 1941  
The City Planning Commission of the City of Wichita, Kansas.  
By: Coslee Smith, President  
Attest: P. Brockway, Secretary

Approved by the Board of City Commissioners of Wichita, Kansas this 2<sup>nd</sup> day of June 1941  
City Clerk  
Approved by the Board of County Commissioners of Sedgwick County, Kansas this 2<sup>nd</sup> day of June 1941  
County Clerk

State of Kansas } ss.  
County of Sedgwick } This is to certify this instrument was filed for record in the office of Register of Deeds on the 3<sup>rd</sup> day of June 1941 at 2 o'clock P.M. and is duly Recorded.  
H. B. Dugan, Attorney in fact  
R. B. Dugan  
By: Deputy  
S E W 9 2 P e r m i t M 4 4 / P 2 9 6  
Register of Deeds



PROJ. NO.	G14_0016-4
DESIGNER	SRS
DRAWN BY	EAM
CFN	0016-4DET
SHEET	04
REV	0
DATE	4-28-16
DESCRIPTION	PRELIM SET FOR COM REVIEW
CHK	DSN
CHK	EAM
CHK	CHK

SCOTT R. SERVIS  
ENGINEER  
KS # 17874

200 N. EMPORIA, SUITE 100  
PH. (316) 440-4304 | FAX (316) 440-4309  
www.kawvalley.com | www.kveeng.com

**KAW VALLEY ENGINEERING**  
KAW VALLEY ENGINEERING, INC. IS AUTHORIZED TO OFFER ENGINEERING SERVICES BY KANSAS STATE CERTIFICATE OF AUTHORIZATION # E-113. EXPIRES 12/31/16

**VERIZON WIRELESS**  
620 S. WEST ST  
WICHITA, KANSAS

PLAT