

GENERAL NOTES

- THE CONTRACTOR SHALL COMPLY WITH ALL APPLICABLE SAFETY REGULATIONS. ALL CONSTRUCTION SHALL BE COMPLETED FOLLOWING CURRENT CITY STANDARD SPECIFICATIONS AND SPECIAL PROVISIONS.
- CONTRACTOR WILL BE REQUIRED TO PROVIDE NOTICE TO UTILITY COMPANIES A MINIMUM OF SEVENTY-TWO (72) HOURS PRIOR TO ANY EXCAVATION, AS FOLLOWS:
 KANSAS ONE-CALL 687-2470
 THE CONTRACTOR MUST NOTIFY THE FOLLOWING IN CASE OF AN EMERGENCY:
 AT&T 1-800-246-8464
 BLACK HILLS ENERGY 1-800-694-8989
 CITY OF WICHITA WATER 1-316-268-4555
 CITY OF WICHITA SEWER 1-316-268-4073
 CITY OF WICHITA STORMWATER 1-316-268-4090
 CITY OF WICHITA TRAFFIC 1-316-268-4034
 COX COMMUNICATIONS 1-888-249-3530
 KANSAS GAS SERVICE 1-888-482-4950
 WESTAR ENERGY 1-800-544-4857
- UTILITY SERVICE LINES, POLES, ETC. ARE TO BE ADJUSTED AS NECESSARY BY OTHERS PRIOR TO CONSTRUCTION UNLESS THE PLANS SPECIFICALLY CALL FOR THEIR ADJUSTMENT BY THE CONTRACTOR OR UNLESS THE PLANS SPECIFICALLY IDENTIFY A UTILITY TO BE ADJUSTED BY ITS OWNER DURING CONSTRUCTION. EXISTING UTILITIES AND THEIR LOCATION, AS SHOWN ON THE PLANS, REPRESENT THE BEST INFORMATION OBTAINABLE FOR DESIGN. THE CONTRACTOR WILL BE REQUIRED TO WORK AROUND EXISTING UTILITIES WITHIN THE RIGHT-OF-WAY WHICH DO NOT CONFLICT WITH PROPOSED CONSTRUCTION.
- RUBBLE FROM THE REMOVAL OF MISCELLANEOUS STRUCTURES AND EXCESS EXCAVATION WHICH IS TO BE WASTED SHALL BE DISPOSED OF ON SITES TO BE PROVIDED BY THE CONTRACTOR. THESE SITES SHALL BE APPROVED BY THE ENGINEER AS TO SUITABILITY, APPEARANCE AND SITE LOCATION. LOCATIONS, IN THE OPINION OF THE ENGINEER, THAT WILL LEAVE AN UNSIGHTLY APPEARANCE WILL NOT BE APPROVED. ALL DISPOSAL SITES MUST BE APPROVED BY THE KANSAS DEPARTMENT OF HEALTH AND ENVIRONMENT. MATERIAL EITHER STOCKPILED OR DISPOSED OF IN A FLOOD PLAIN WILL REQUIRE A KANSAS STATE BOARD OF AGRICULTURE PERMIT. ANY MATERIAL DUMPED IN WATERS OF THE UNITED STATES OR WETLANDS IS SUBJECT TO U.S. CORPS OF ENGINEERS PERMITTING REGULATIONS. ANY MATERIAL BURIED OR STOCKPILED BEYOND APPROVED CONSTRUCTION LIMITS WILL REQUIRE ADDITIONAL ARCHAEOLOGICAL INVESTIGATIONS UNLESS BURIED IN A PREVIOUSLY APPROVED BORROW LOCATION.
- TREES AND SHRUBS IN PUBLIC RIGHT-OF-WAY WHICH ARE IN DIRECT CONFLICT WITH PROPOSED NEW CONSTRUCTION SHALL BE REMOVED BY THE CONTRACTOR WITH THE ENGINEER'S APPROVAL. TREES AND SHRUBS WHICH ARE NOT IN DIRECT CONFLICT WITH PROPOSED NEW CONSTRUCTION SHALL BE SAVED AND PROTECTED FROM DAMAGE.
- THE CONTRACTOR SHALL GIVE ALL PROPERTY OWNERS AND/OR TENANTS OF DEVELOPED PROPERTY ADJUTING THE CONSTRUCTION OF THIS PROJECT A MINIMUM OF TEN (10) DAYS NOTICE PRIOR TO START OF CONSTRUCTION.
- THE CONTRACTOR SHALL BE RESPONSIBLE FOR PRESERVING PROPERTY IRONS. THE CONTRACTOR WILL BE REQUIRED TO RE-ESTABLISH ANY PROPERTY IRONS WHICH ARE DAMAGED OR DESTROYED BY HIS CONSTRUCTION OPERATIONS. SUCH IRONS SHALL BE RE-ESTABLISHED BY A LICENSED LAND SURVEYOR IN ACCORDANCE WITH STATE LAWS.
- THE WATER DISTRIBUTION DIVISION SHALL FIELD LOCATE WATER VALVES ONE TIME DURING CONSTRUCTION WHEN REQUESTED BY THE CONTRACTOR. IT SHALL BE THE CONTRACTOR'S RESPONSIBILITY TO PRESERVE SUCH FIELD LOCATIONS DURING THE CONSTRUCTION PROCESS. WATER VALVES, VALVE BOXES OR FIRE HYDRANTS DAMAGED DURING CONSTRUCTION SHALL BE REPAIRED BY CONTRACTOR AT HIS OWN EXPENSE. VALVE BOXES AND WATER METERS WITHIN THE PROJECT LIMITS SHALL BE ADJUSTED TO MATCH FIELD GRADES.
- IF TRAFFIC WILL BE IMPACTED BY CONSTRUCTION, A TRAFFIC CONTROL PLAN MUST BE SUBMITTED AND APPROVED BY THE CITY TRAFFIC ENGINEER, BRIAN COON AT TRAFFIC@WICHITA.GOV BEFORE CONSTRUCTION CAN BEGIN. THE CONTRACTOR SHALL BE RESPONSIBLE FOR ALL TRAFFIC CONTROL MEASURES TO FACILITATE CONSTRUCTION. ALL CONSTRUCTION ZONE MARKINGS AND SIGNAGE SHALL CONFORM TO THE LATEST VERSION OF THE MANUAL ON UNIFORM TRAFFIC CONTROL DEVICES (MUTCD) AS PUBLISHED BY THE US DEPT. OF TRANSPORTATION, FEDERAL HIGHWAY ADMINISTRATION. ALL COSTS ASSOCIATED WITH CONSTRUCTION MARKINGS AND SIGNAGE SHALL BE THE CONTRACTORS RESPONSIBILITY.
- ALL ELEVATIONS SHOWN ARE NAVD 88. (NAVD88 -0.46'=NGVD, NGVD - 1187.4= CITY DATUM)
- ALL AREAS DISTURBED DURING CONSTRUCTION THAT WILL NOT BE UNDER PROPOSED PAVEMENT SHALL BE SEEDED AND MULCHED IN ACCORDANCE WITH THE STANDARD SPECIFICATIONS. SEED SHALL BE RYE. THIS WORK SHALL BE PAID FOR AS THE CONTRACT LUMP SUM PRICE BID FOR "SEEDING, TEMPORARY".
- ALL EXISTING PAVEMENT AND CURB AND GUTTER WITHIN THE CONSTRUCTION LIMITS SHALL BE SAW CUT, FULL DEPTH, TO THE LINES SHOWN ON THE PLANS, OR TO THE NEAREST JOINT, AND REMOVED, UNLESS OTHERWISE NOTED. IF REMOVAL LIMITS ARE WITHIN THREE FEET OF A JOINT, REMOVE TO THE JOINT.
- ALL TRAFFIC CONTROL DEVICES IN THE WORK ZONE (INCLUDING MARKINGS AND SIGNS) AND THEIR INSTALLATION AND MAINTENANCE SHALL COMPLY WITH THE LATEST EDITION OF THE MANUAL ON UNIFORM TRAFFIC CONTROL DEVICES (MUTCD). ALL TRAFFIC CONTROL DEVICES IN THE TRAVELED WAY OR CLEAR ZONE SHALL BE CRASHWORTHY (NCHRP Report 350 or MASH compliant).
http://safety.fhwa.dot.gov/roadway_dept/policy_guide/road_hardware/wzd
- ALL CONSTRUCTION EQUIPMENT, INCLUDING VEHICLES, MATERIALS, AND DEBRIS, SHALL BE STORED OUTSIDE OF THE CLEAR ZONE WHERE THIS CANNOT BE ACHIEVED THE CONTRACTOR SHALL PLACE APPROPRIATE SIGNS, OBJECT IDENTIFIERS, AND/OR BARRICADES IN COMPLIANCE WITH THE MUTCD.
- EXCEPT WHEN REQUIRED FOR SAFETY, TRAFFIC CONTROL SHALL NOT BLOCK ANY LANES OR SIDEWALKS WHEN WORK IS NOT BEING PERFORMED.
- EACH BIDDER SHALL VISIT THE SITE OF THE PROJECT BEFORE SUBMITTING THE PROPOSAL FOR THIS WORK SO THAT HE WILL BE FULLY INFORMED OF THE EXISTING FIELD CONDITIONS AND THE OBSTACLES WHICH MIGHT BE ENCOUNTERED. UPON AWARD OF THE CONTRACT THE CONTRACTOR WILL NOT BE GRANTED ANY ADDITIONAL COMPENSATION WITH REGARDS TO TIME AND MONEY FOR CONDITIONS THAT MAY HAVE BEEN EVALUATED DURING ANY INSPECTION OF THE SITE.

- FIELD LOCATE ALL EXISTING UTILITIES PRIOR TO BEGINNING ANY EXCAVATION WORK. CONTACT THE KANSAS-ONE-CALL SYSTEM AT 811 AT LEAST 72 HOURS IN ADVANCE TO REQUEST FIELD LOCATES. FOR UTILITIES THAT ARE NOT MEMBERS OF THE KANSAS-ONE-CALL SYSTEM, CONTACT THOSE COMPANIES DIRECTLY.
- THE CONTRACTOR SHALL ADHERE TO THE LATEST ADA REGULATIONS. ANY DISCREPANCIES WITH GRADES SHOWN SHALL BE REPORTED TO THE ENGINEER FOR RESOLUTION PRIOR TO PLACEMENT OF PAVEMENT, INCLUDING CONCRETE WALKS. THE CONTRACTOR SHALL COMPLY TO THE FOLLOWING GRADING REQUIREMENTS FOR ADA ACCESSIBLE ROUTES:
 CURB RAMPS - SLOPE NOT TO EXCEED 1:12
 MAX LENGTH=6 FEET WITH
 MAX RISE OF 6 INCHES.
 CONCRETE WALKS - LONGITUDINAL SLOPE NOT TO EXCEED 5%
 TRANSVERSE SLOPE NOT TO EXCEED 2%.
 LANDING AREAS - SLOPE NOT TO EXCEED 2% IN ALL DIRECTIONS
 5' LANDING AREA REQUIRED AT DOOR ENTRANCES
 AND CURB RAMPS.

EARTHWORK SUMMARY (C.Y.)			
	Unclassified Excavation	Compacted Fill (95%)	Fill**
Fontana	393	578	644
Pine Grove Circle	91	15	212
Judith	325	0	340
Judith Court	511	0	356
Chambers Circle	558	0	119
Easement Grading	252	0	595
TOTALS	2,130	523	2,266

**FOR INFORMATION ONLY-NOT A PAY ITEM. NO SHRINKAGE FACTOR HAS BEEN APPLIED.
 ESTIMATED BORROW MATERIAL REQUIRED (AVAILABLE ON SITE)
 (2,266/0.85) = 2,130 = 1,151 C.Y.
 VMF = 0.85 (ASSUMED)
 WASTE MATERIAL SHALL BE SPREAD ON PROJECT SITE, BLADED SMOOTH AND SLOPED TO DRAIN.
 BORROW MATERIAL IS AVAILABLE FOR CONTRACTOR UTILIZATION AT PROJECT SITE. CONTRACTOR SHALL COORDINATE UTILIZATION OF SITE BORROW MATERIAL WITH OWNER.
 THE CONTRACTOR SHALL SATISFY THEMSELVES WITH THE EARTHWORK QUANTITIES AND NO CHANGE ORDER FOR EARTHWORK WILL BE APPROVED. EXCAVATION, HANDLING, PLACING OF BORROW MATERIAL UTILIZED ON SITE SHALL BE SUBSIDIARY TO BID ITEM "EASEMENT GRADING".

EARTHWORK

EXCAVATION	2,130 CU. YDS.
COMPACTED FILL	523 CU. YDS.
LOOSE FILL	2,266 CU. YDS.

PROJECT LENGTH = 2,434 LIN. FT.

BENCHMARKS

- BM #10 - BRASS DISK ON TOP OF CURB, AT PT ON NORTH SIDE OF FONTANA, AT THE NORTHWEST CURB RETURN AT CHAMBERS. ELEV.=1363.47 (NAVD88)
- BM #11 - "T" POST ±20' NORTH AND ±5' WEST OF THE SOUTHWEST CORNER OF LOT 22, BLOCK 4, FONTANA 4TH ADDITION. ELEV.=1362.72 (NAVD88)
- BM #12 - CHISELED "d" ON TOP OF CURB, AT THE SOUTHWEST CORNER OF THE CURB INLET ON THE NORTH SIDE OF FONTANA, 600'± WEST OF CHAMBERS. ELEV.=1360.36 (NAVD88)
- BM #13 - "T" POST ±40' SOUTH AND ±45' EAST OF THE NORTHEAST CORNER OF LOT 26, BLOCK 1, FONTANA 4TH ADDITION. ELEV.=1357.81 (NAVD88)
- BM #14 - "T" POST 2' SOUTH OF POWER POLE, 3RD SINGLE POLE SOUTH OF THE WEST 1/4 COR., SEC. 31 NEAR THE NORTHWEST CORNER OF LOT 1, BLOCK 3, FONTANA 4TH ADDITION ELEV.=1358.54 (NAVD88)
- BM #15 - "T" POST 2' SOUTH OF THE FIRST POWER POLE SOUTH OF THE EAST-WEST "H" STRUCTURE LINE, EAST SIDE OF 119TH ±120' SOUTH OF THE W 1/4 COR., SEC 31. ELEV.=1357.32 (NAVD88)
- BM #4-1 - (NOT IN PROJECT AREA), CHISELED "d" ON TOP OF CURB, NORTH SIDE (08389-002) OF FONTANA, AT PT CURB AND ± 95' WEST OF @ COVINGTON AND LONDON CIRCLE. ELEV.=1364.80 (NAVD88)
 ELEV.=1364.34 (NGVD29)
 ELEV.=176.94 (CITY)

PAVING AND INCIDENTAL DRAINAGE IMPROVEMENTS

to serve

FONTANA 5TH-PHASE 1

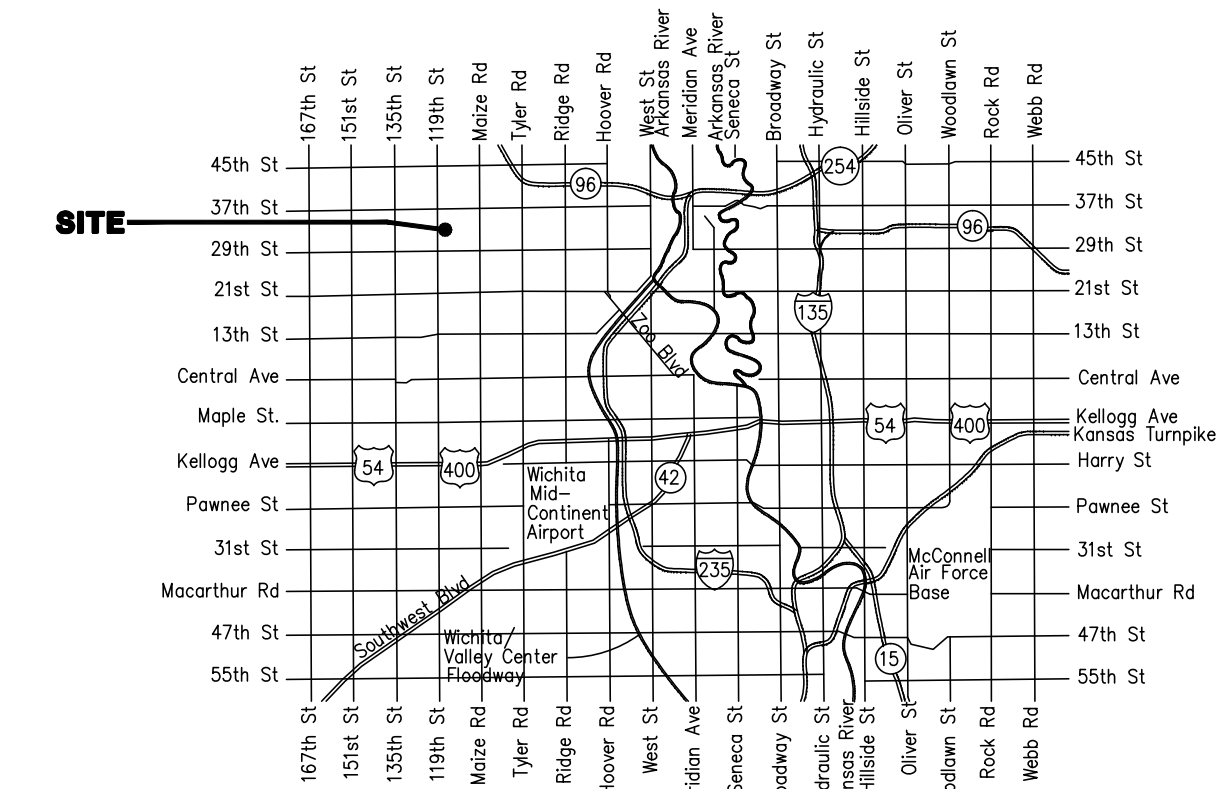
FONTANA-FROM THE W.L. OF LOT 1, BLOCK 1, TO THE E.L. OF LOT 15, BLOCK 4
 PINE GROVE CIRCLE-FROM N.L. OF FONTANA TO AND INCLUDING THE CUL-DE-SAC
 JUDITH-FROM N.L. OF FONTANA TO S.L. OF JUDITH COURT
 JUDITH COURT-FROM W.L. OF CUL-DE-SAC TO E.L. OF CUL-DE-SAC

CITY OF WICHITA, KANSAS

Gary Janzen, P.E. City Engineer

Project Number 472-84801

OCA NO. 766368



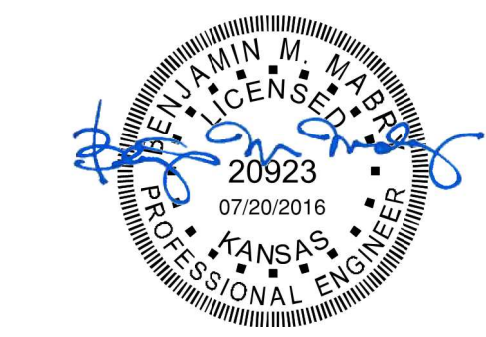
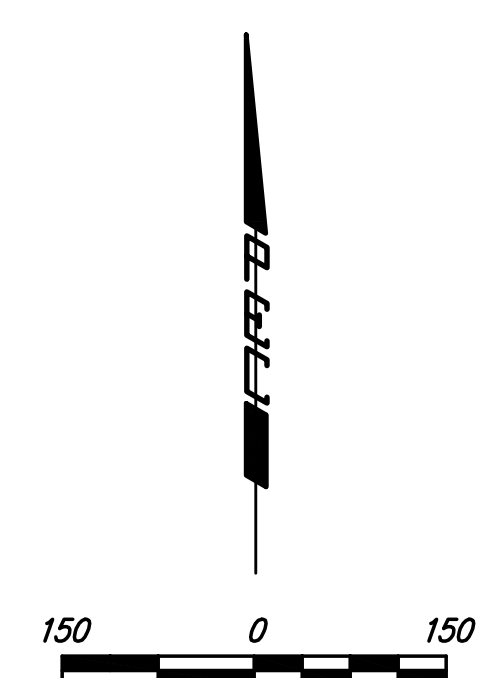
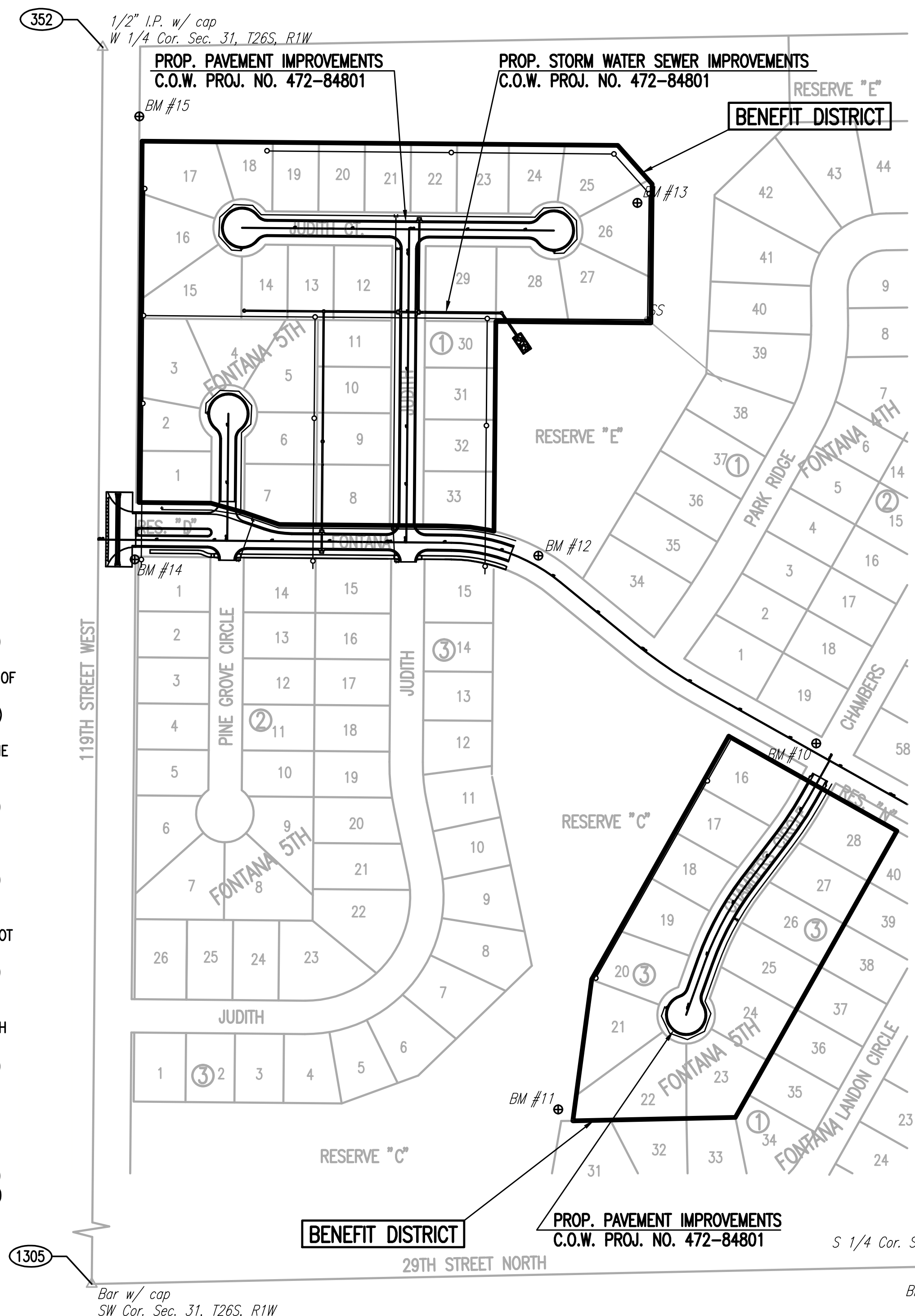
Vicinity Map

DEVELOPER CONTACT

MR. DAVID HAMBRICK
 SOCORO HOMES, INC.
 727 N. WACO, SUITE 400
 WICHITA, KANSAS 67203
 (316) 263-3201

SHEET INDEX

- TITLE SHEET
- ASPHALT PAVING DETAIL
- PAVING PLAN-FONTANA
- PAVING PLAN-PINE GROVE CIRCLE
- PAVING PLAN-JUDITH
- PAVING PLAN-JUDITH COURT
- PAVING PLAN-CHAMBERS CIRCLE
- GEOMETRY AND COORDINATES PLAN-FONTANA
- VALLEY GUTTER DETAILS
- CURB AND GUTTER DETAILS
- WHEELCHAIR RAMP DETAILS
- SWS LINE NO. 1
- SWS LINE NOS. 1A AND 1B
- EASEMENT GRADING
- STD. TYPE 1A CURB INLET
- CURB INLET PAVEMENT UNDERDRAIN DETAILS
- BACKYARD INLET DETAILS
- PRECAST CONCRETE MANHOLE DETAILS
- MANHOLE FRAME AND COVER DETAILS
- END SECTION-PIPE RESTRAINT COUPLER
- MISCELLANEOUS DRAINAGE DETAILS
- EROSION CONTROL PLAN
- EROSION CONTROL DETAILS
- SIGN DETAILS
- PLAT BUBBLE MAP
- PLAT COORDINATES
- CROSS SECTIONS



SEE SHEETS NOS. 32 & 33 FOR PLAT COORDINATES

SURVEY PREPARED AUGUST 24, 2015 BY PEC FIELD SERVICES.

SUBDIVISION BENCH MARKS (SBM)				
NO.	STREET AND STATION	FROM @	DESCRIPTION	ELEVATION
1	FONTANA, STA. 52+58.00	14.50' RT.	EAST END, SOUTHEAST CURB RETURN PT, FONTANA	
2	PINE GROVE CIRCLE, STA. 21+77.50	14.50' RT.	SOUTH END, SOUTHEAST CURB RETURN PC, PINE GROVE COIR.	
3	JUDITH, STA. 30+34.00	14.50' RT.	NORTH END, NORTHEAST CURB RETURN PT, JUDITH	
4	JUDITH, STA. 35+10.00	14.50' RT.	SOUTH END, SOUTHEAST CURB RETURN PC, JUDITH	
4	CHAMBERS CIRCLE, STA. 97+44.12	14.50' RT.	PT TOP OF CURB, APPROX. MID-POINT OF CHAMBERS CIRCLE	

THE COST OF THE BENCH MARK DISC, INCLUDING INSTALLATION, SHALL BE SUBSIDIARY TO THE CURB.

JULY 2016



PROFESSIONAL ENGINEERING CONSULTANTS, P.A.
 303 SOUTH TOPEKA WICHITA, KS 67202
 316-262-2691 www.pec1.com

Scaled 07-20-2016 3:11:06 PM by BJS
 Plot Scale 1:1 07-20-2016 3:19:08 PM by BJS
 U:\Wichita-civil\2015\15631\000\Drawings\15631-000-01C-TITLE SHEET