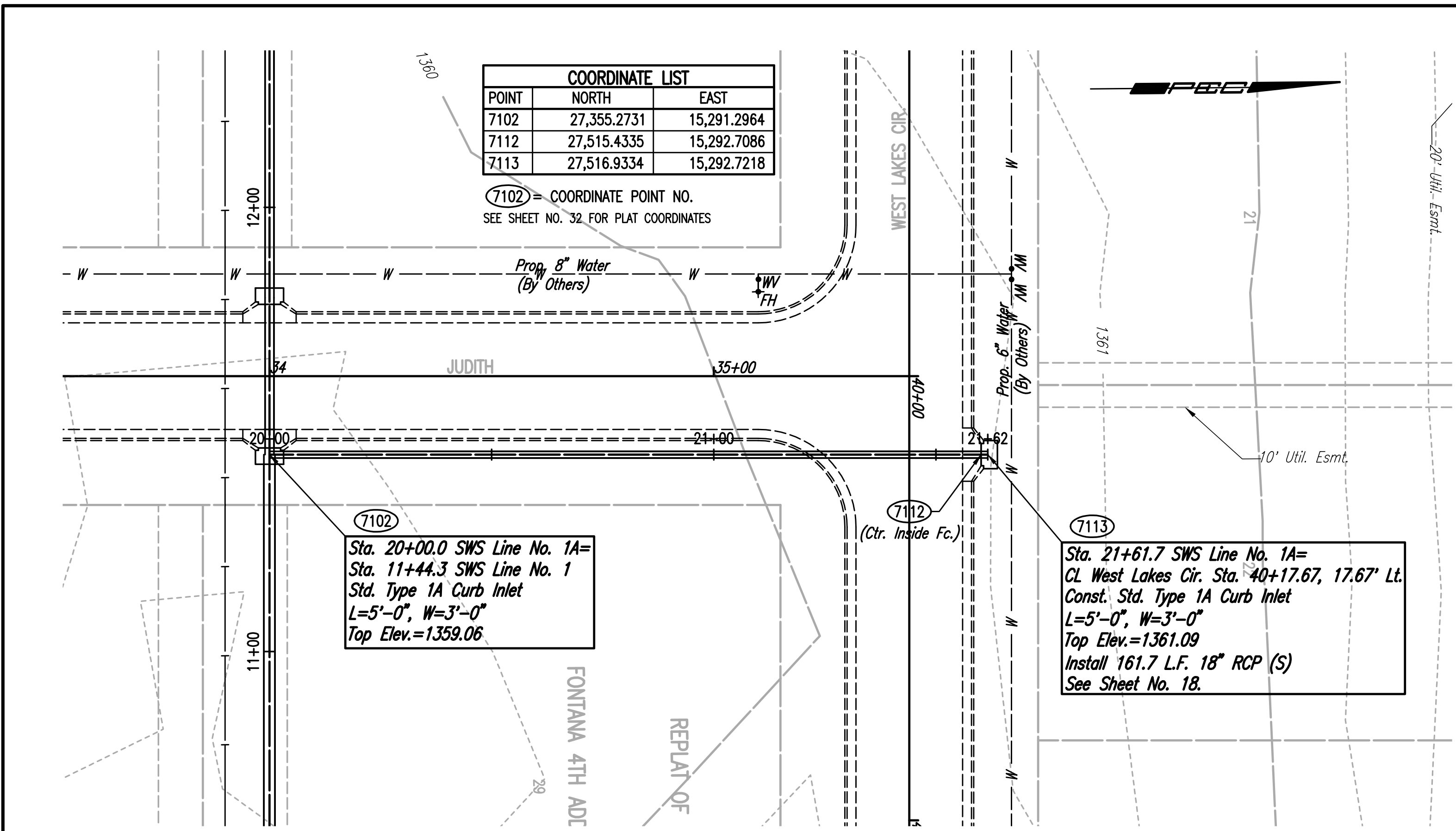


PLAN	CHECKED	CHECKED
BY		
DATE		

PROFILE	CHECKED	CHECKED
BY		
DATE		

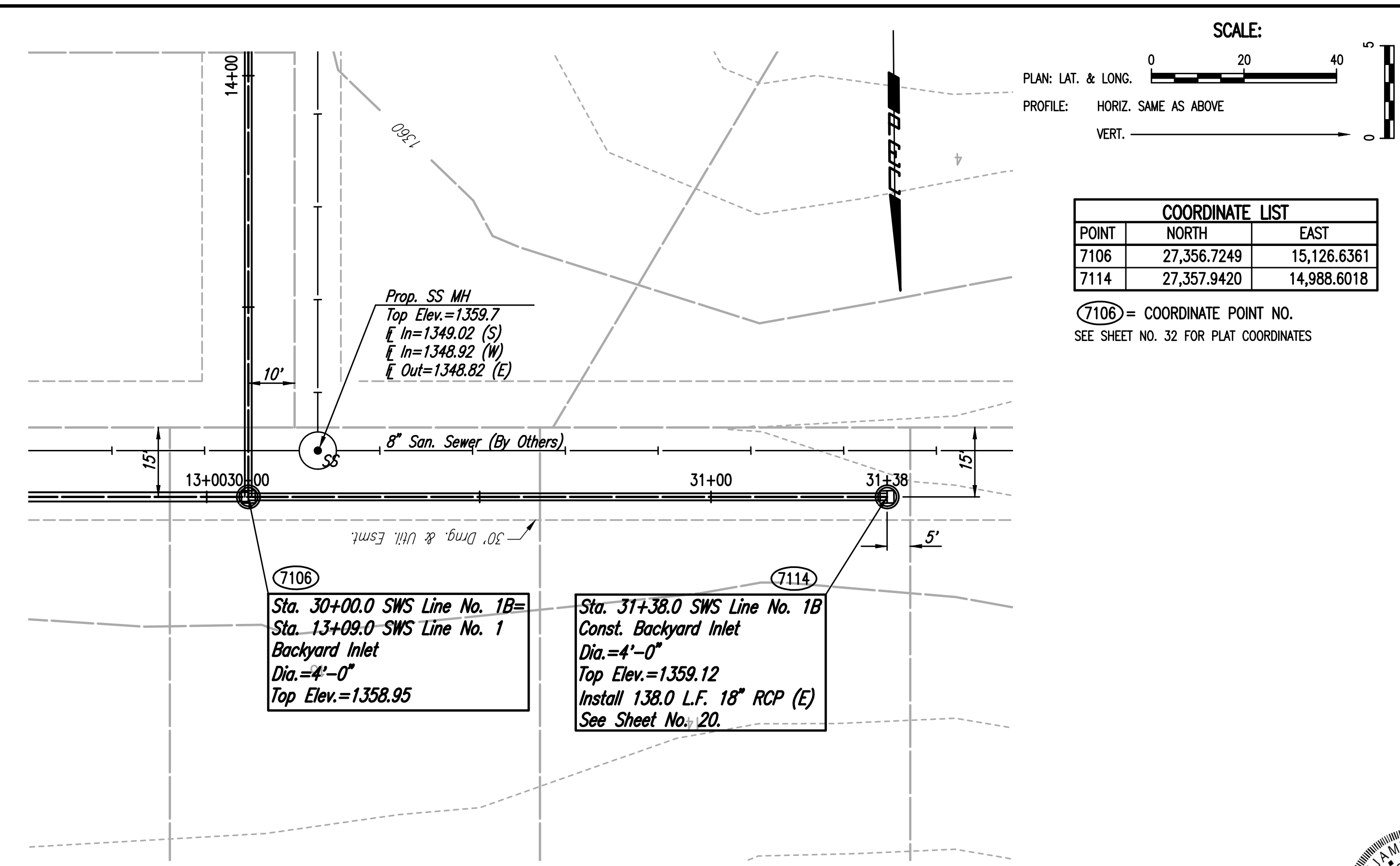
Saved: 07-19-2016 5:21:00 PM by BJS  
 Plot Scale: 1" = 10'-0" (Horizontal) 1" = 4'-0" (Vertical)  
 U:\Projects\2015\15631\15631\Drawings\15631-000-16C-SWS LINE NOS. 1A & 1B



7102  
 Sta. 20+00.0 SWS Line No. 1A=  
 Sta. 11+44.3 SWS Line No. 1  
 Std. Type 1A Curb Inlet  
 L=5'-0", W=3'-0"  
 Top Elev.=1359.06

7113  
 Sta. 21+61.7 SWS Line No. 1A=  
 CL West Lakes Cir. Sta. 40+17.67, 17.67' Lt.  
 Const. Std. Type 1A Curb Inlet  
 L=5'-0", W=3'-0"  
 Top Elev.=1361.09  
 Install 161.7 L.F. 18" RCP (S)  
 See Sheet No. 18.

SWS LINE NO. 1A

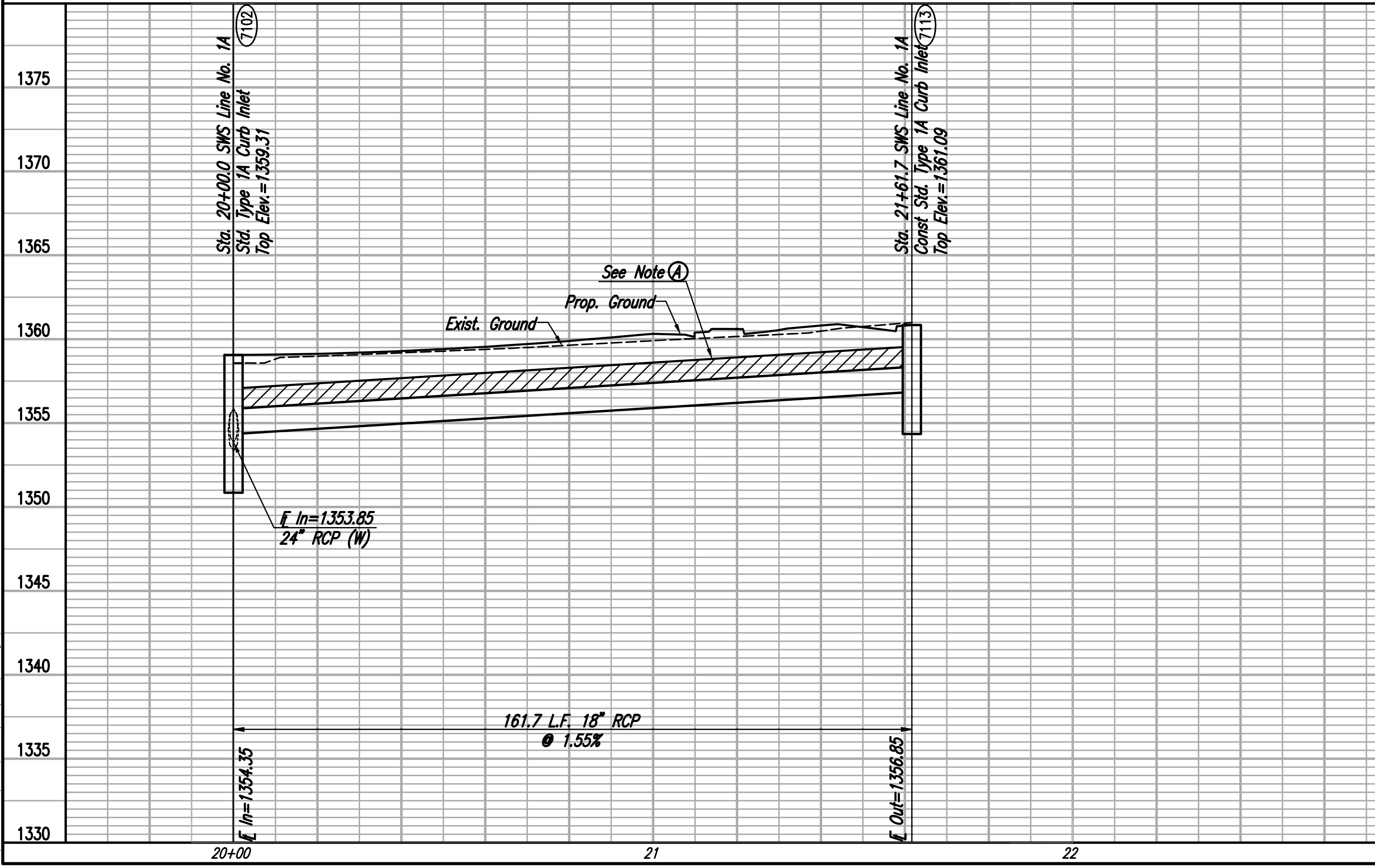


7106  
 Sta. 30+00.0 SWS Line No. 1B=  
 Sta. 13+09.0 SWS Line No. 1  
 Backyard Inlet  
 Dia.=4'-0"  
 Top Elev.=1358.95

7114  
 Sta. 31+38.0 SWS Line No. 1B  
 Const. Backyard Inlet  
 Dia.=4'-0"  
 Top Elev.=1359.12  
 Install 138.0 L.F. 18" RCP (E)  
 See Sheet No. 20.

SWS LINE NO. 1B

NOTE (A): ALL STORM SEWER EXCAVATION UNDER PAVEMENT SHALL BE SAND FILLED AND FLUSHED (JETTED AND VIBRATED) WITH WATER PER THE REQUIREMENTS LISTED IN THE STANDARD SPECIFICATIONS FOR THE CITY OF WICHITA. THE SAND FILL SHALL START AT THE TOP OF IMPROVED BEDDING (PER STANDARD SPECIFICATIONS) AND BE BROUGHT UP UNIFORMLY TO AN ELEVATION 12 INCHES ABOVE THE TOP OF PIPE OR 2 FEET BELOW THE BOTTOM OF PROPOSED PAVEMENT, WHICHEVER IS HIGHER. HOWEVER, IN NO INSTANCE SHALL THE SAND FILL BE BROUGHT UP TO LESS THAN 6 INCHES BELOW THE PAVEMENT SUB-BASE MATERIAL. STORM SEWER ADJACENT TO THE BACK OF CURB ALSO BE SAND FILLED PER THIS PROVISION, TO WITHIN 2 FEET OF FINAL GRADE.



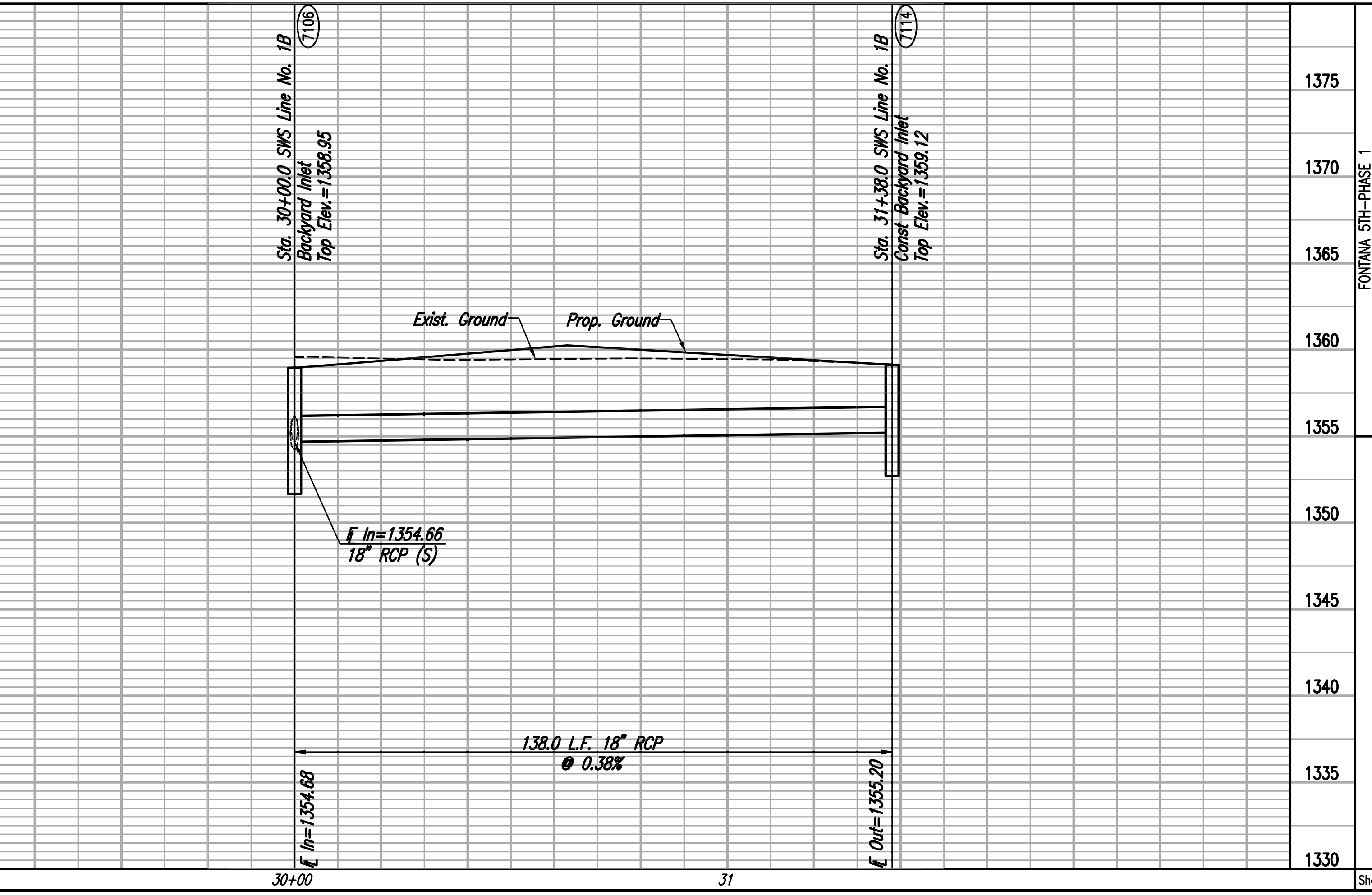
7102  
 Sta. 20+00.0 SWS Line No. 1A  
 Std. Type 1A Curb Inlet  
 Top Elev.=1359.31

7113  
 Sta. 21+61.7 SWS Line No. 1A  
 Const. Std. Type 1A Curb Inlet  
 Top Elev.=1361.09

In=1353.85  
 24" RCP (W)

161.7 L.F. 18" RCP  
 1.55%

Out=1356.85



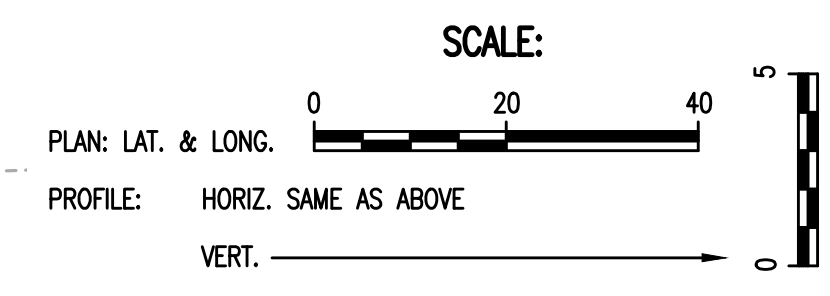
7106  
 Sta. 30+00.0 SWS Line No. 1B  
 Backyard Inlet  
 Top Elev.=1358.95

7114  
 Sta. 31+38.0 SWS Line No. 1B  
 Const. Backyard Inlet  
 Top Elev.=1359.12

In=1354.66  
 18" RCP (S)

138.0 L.F. 18" RCP  
 0.38%

Out=1355.20



COORDINATE LIST		
POINT	NORTH	EAST
7106	27,356.7249	15,126.6361
7114	27,357.9420	14,988.6018

7106 = COORDINATE POINT NO.  
 SEE SHEET NO. 32 FOR PLAT COORDINATES



FONTANA 5TH-PHASE 1  
 PAVING AND INCIDENTAL DRAINAGE IMPROVEMENTS  
**SWS LINE NOS. 1A & 1B**  
 GARY JANZEN, P.E. - CITY ENGINEER  
 CITY OF WICHITA PROJECT NO. 472-84801

PEC  
 PROFESSIONAL ENGINEERING CONSULTANTS P.A.  
 303 SOUTH TOPEKA WICHITA, KS 67202  
 316-262-2691 www.pec1.com

Job No. 31-15631-000  
 Date July 2016

Designed By BMM  
 Drawn By BUS