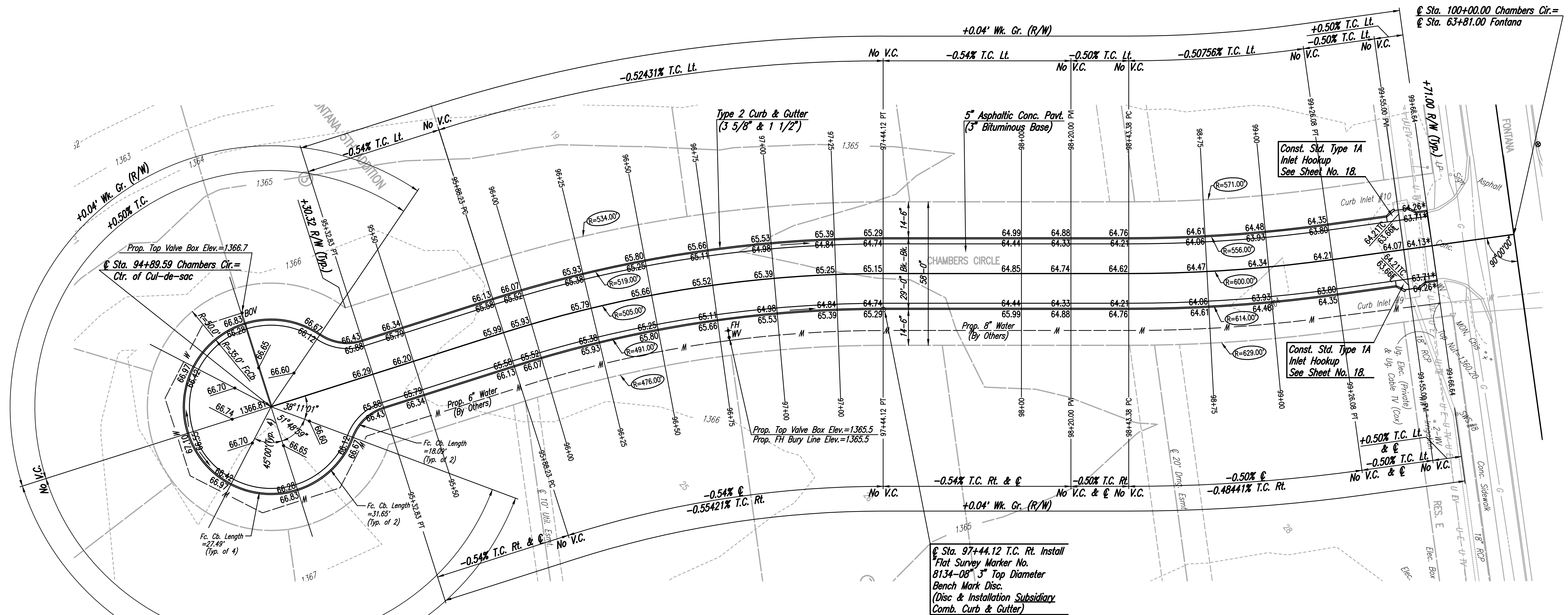
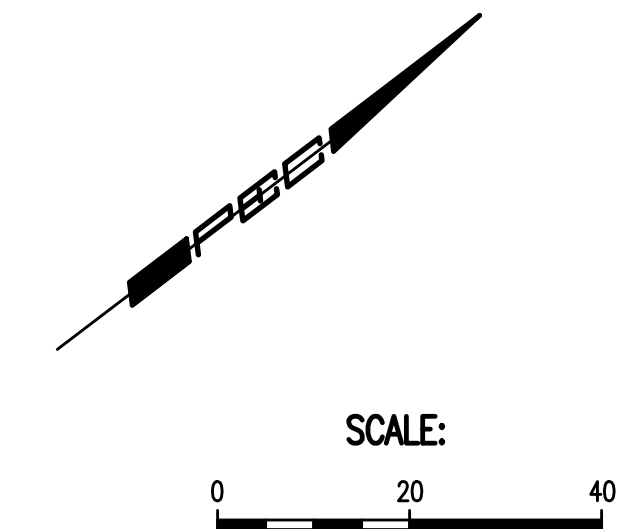


WATER VALVE BOX ELEVATIONS			
STREET	STATION	OFFSET	PROPOSED ELEVATION
CHAMBERS CIRCLE	94+90.02	39.7' Lt.	1366.7
CHAMBERS CIRCLE	96+78.85	21.80' Rt.	1365.5

CURVE DATA						
CURVE DATA BASED ON $\Delta/2 = 3^\circ 56' 56.5''$						
Δ	D	R	L	T	F	
$7^\circ 53' 53.5''$	$9^\circ 32' 57.5''$	600.00'	82.71'	41.42'	1.43'	

Δ STATION	Δ ARC LENGTH	FACE CURB LENGTH		CHORD LENGTH		DEFLECTION ANGLE	Δ TOTAL DEFLECTION
		LEFT CURB	RIGHT CURB	8' OFF LEFT FACE CURB	8' OFF RIGHT FACE CURB		
98+43.38						0°00'00.0"	0°00'00.0"
98+50.00	6.62'	6.77'	6.47'	6.86'	6.38'	00°18'57.9"	00°18'57.9"
98+75.00	25.00'	25.58'	24.42'	25.91'	24.08'	01°11'37.2"	01°30'35.1"
99+00.00	25.00'	25.58'	24.42'	25.91'	24.08'	01°11'37.2"	02°42'12.3"
99+25.00	25.00'	25.58'	24.42'	25.91'	24.08'	01°11'37.2"	03°53'49.5"
99+26.09	1.09'	1.11'	1.06'	1.13'	1.05'	00°03'07.4"	03°56'56.5"
TOTAL	82.71'	84.64'	80.78'				



CURVE DATA						
CURVE DATA BASED ON $\Delta/2 = 8^\circ 50' 36''$						
Δ	D	R	L	T	F	
$17^\circ 41' 12''$	$11^\circ 20' 44.5''$	505.00'	155.89'	78.57'	6.08'	

Δ STATION	Δ ARC LENGTH	FACE CURB LENGTH		CHORD LENGTH		DEFLECTION ANGLE	Δ TOTAL DEFLECTION
		LEFT CURB	RIGHT CURB	8' OFF LEFT FACE CURB	8' OFF RIGHT FACE CURB		
95+88.23						0°00'00.0"	0°00'00.0"
96+00.00	11.77'	12.10'	11.44'	12.28'	11.26'	00°40'03.7"	00°40'03.7"
96+25.00	25.00'	25.69'	24.31'	26.09'	23.91'	01°25'05.6"	02°05'09.3"
96+50.00	25.00'	25.69'	24.31'	26.09'	23.91'	01°25'05.6"	03°30'14.8"
96+75.00	25.00'	25.69'	24.31'	26.09'	23.91'	01°25'05.6"	04°55'20.4"
97+00.00	25.00'	25.69'	24.31'	26.09'	23.91'	01°25'05.6"	06°20'26.0"
97+25.00	25.00'	25.69'	24.31'	26.09'	23.91'	01°25'05.6"	07°45'31.5"
97+44.12	19.12'	19.65'	18.59'	19.95'	18.28'	01°05'04.7"	08°50'36.0"
TOTAL	155.89'	160.21'	151.57'				

NOTE: THIS STREET TO BE CONSTRUCTED WITH ROLL-TYPE CURB. TOP OF CURB ELEVATIONS GIVEN ARE FOR FULL HEIGHT CURB.

* Match Existing

Sowed 07-19-2016 4:55:22 PM by BJS
 Plot Scale 1:1 07-20-2016 3:22:27 PM by BJS
 U:\wchita-civil\2015\15631\000\Main\Drawings\15631-000-09C-PAVING PLAN-CHAMBERS CIRCLE

No.	Revision	By	Date

FONTANA 5TH-PHASE 1
PAVING AND INCIDENTAL DRAINAGE IMPROVEMENTS

PAVING PLAN-CHAMBERS CIRCLE

GARY JANZEN, P.E. - CITY ENGINEER
CITY OF WICHITA PROJECT NO. 472-84801

PROFESSIONAL ENGINEERING CONSULTANTS, P.A.
303 SOUTH TOPEKA WICHITA, KS 67202
316-262-2691 www.pec1.com

Designed by **BMM**

Drawn by **BJS**

Job No. 31-15631-000

Date July 2016

Sht. 09 of 42