

AUBURN HILLS
16TH ADDITION

WATER VALVE LOCATION TABLE

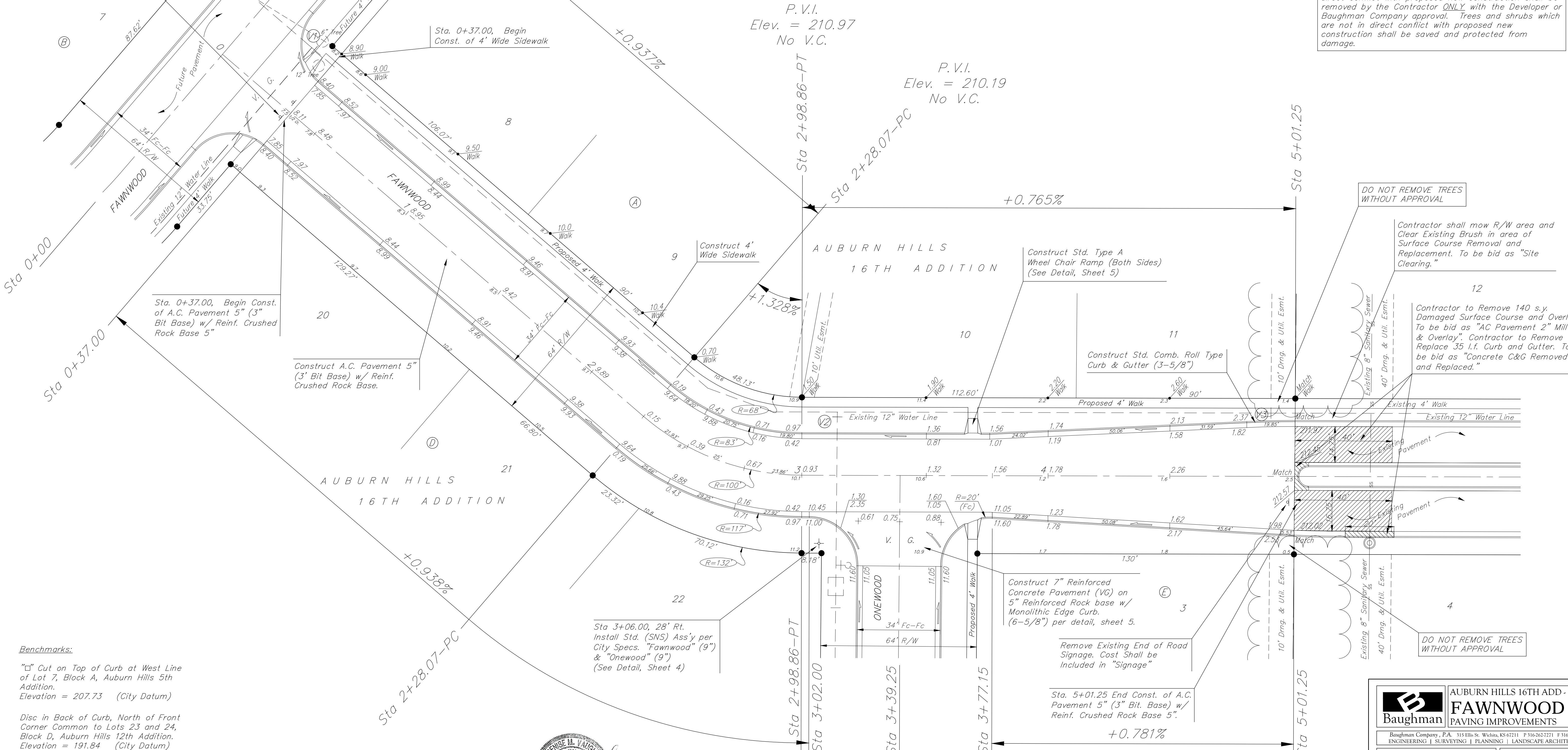
VALVE NUMBER	BASELINE STATION	OFFSET DISTANCE	OFFSET DIRECTION
V1	0+27.40	24'	Lt.
V2	3+13.41	24'	Lt.
V3	4+91.46	26'	Lt.

Scale: 1" = 20'
• = Iron

Sta 0+33.00 Install End of Road Signage from Sta. 7+01 Onewood.

Paving Contractor will be Responsible to Operate all Water Valves on the Project, in the Presence of the Inspector, to Ensure Accessibility to the Valves, and that all Valves are Left in the "ON" Position when the Project is Completed.

Trees and Shrubs in public right-of-way which are in direct conflict with proposed new construction shall be removed by the Contractor ONLY with the Developer or Baughman Company approval. Trees and shrubs which are not in direct conflict with proposed new construction shall be saved and protected from damage.



Benchmarks:
"C" Cut on Top of Curb at West Line of Lot 7, Block A, Auburn Hills 5th Addition. Elevation = 207.73 (City Datum)

Disc in Back of Curb, North of Front Corner Common to Lots 23 and 24, Block D, Auburn Hills 12th Addition. Elevation = 191.84 (City Datum)

"D" Cut on Center of Catch Basin North of Lot Corner Common to Lots 1 and 15, Block B, Auburn Hills 14th Addition. Elevation = 193.65 (City Datum)



Note: Roll Type Curb & Gutter (3-5/8") to be Constructed on the Pavement Shown on this Sheet. Top of Curb Elevations are Given for Full Height Curb (6-5/8").

Baughman		AUBURN HILLS 16TH ADD - PH 1A	
FAWNWOOD		PAVING IMPROVEMENTS	
Baughman Company, P.A. 315 Ellis St. Wichita, KS 67211 P 316-262-7271 F 316-262-0149			
ENGINEERING SURVEYING PLANNING LANDSCAPE ARCHITECTURE			
PROJECT NUMBER 472-84290	DESIGN AEG/DMV	DRAWN DVM	DATE 08/08/16
REVISIONS:	SCALE NOTED		
			SHEET 7 OF 21