

Benchmarks:

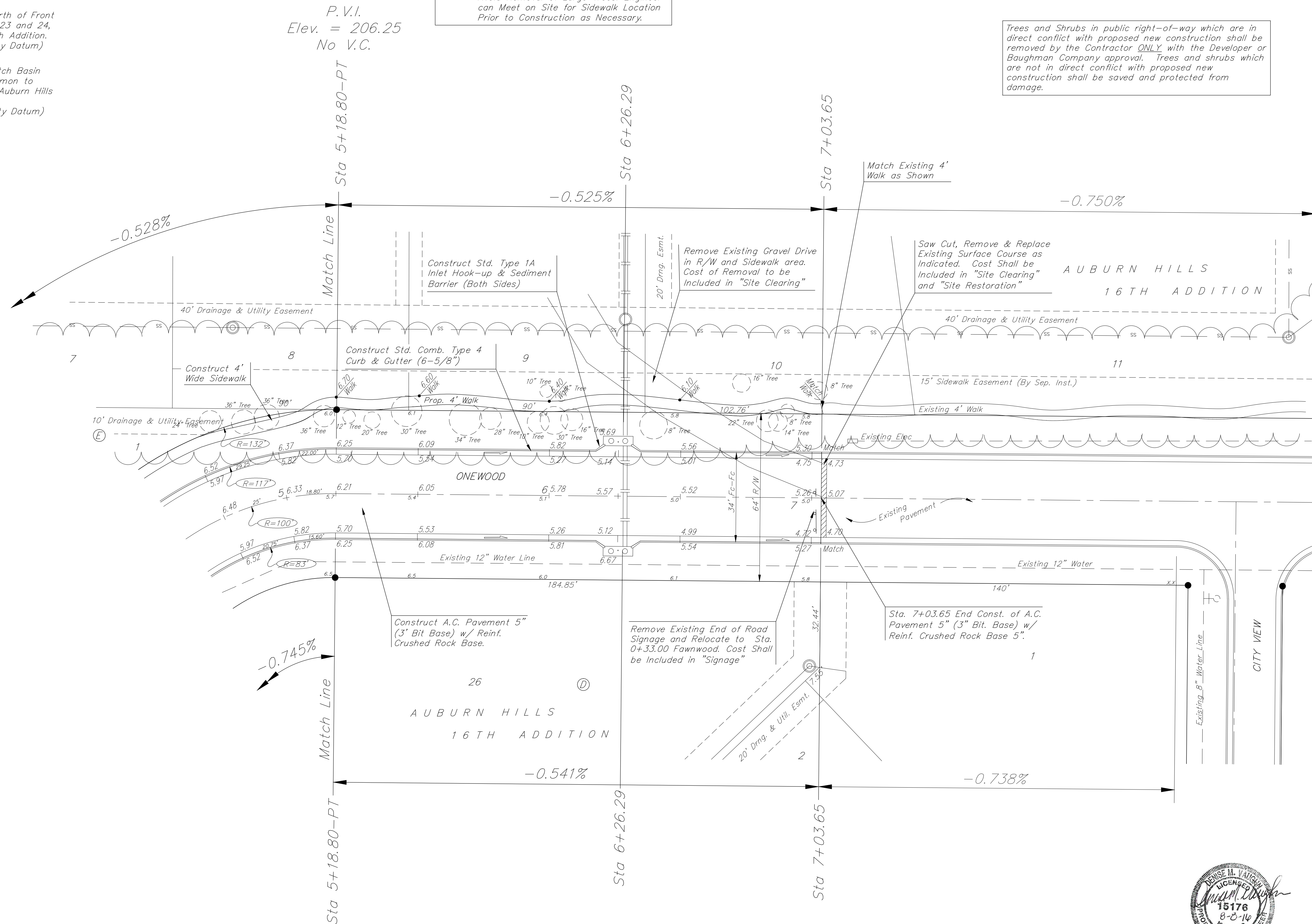
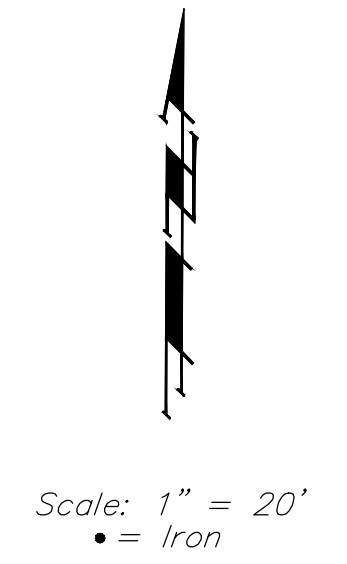
"□" Cut on Top of Curb at West Line of Lot 7, Block A, Auburn Hills 5th Addition.
Elevation = 207.73 (City Datum)

Disc in Back of Curb, North of Front Corner Common to Lots 23 and 24, Block D, Auburn Hills 12th Addition.
Elevation = 191.84 (City Datum)

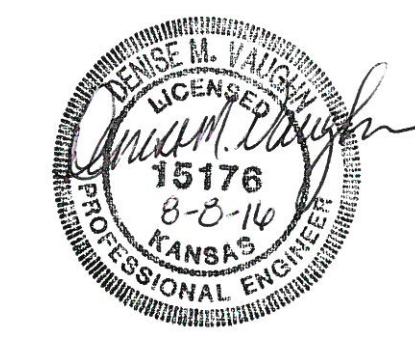
"□" Cut on Center of Catch Basin North of Lot Corner Common to Lots 1 and 15, Block B, Auburn Hills 14th Addition.
Elevation = 193.65 (City Datum)

Note: Sidewalk from Sta. 5+00 to Sta. 7+04 shall be Hand Formed in a Location to Avoid Removal of Large Trees. Engineer can Meet on Site for Sidewalk Location Prior to Construction as Necessary.

Trees and Shrubs in public right-of-way which are in direct conflict with proposed new construction shall be removed by the Contractor ONLY with the Developer or Baughman Company approval. Trees and shrubs which are not in direct conflict with proposed new construction shall be saved and protected from damage.



P.V.I.
Elev. = 206.25
No V.C.



	AUBURN HILLS 16TH ADD - PH 1A	
	ONEWOOD PAVING IMPROVEMENTS	
<small>Baughman Company, P.A. 315 Ellis St. Wichita, KS 67211 P 316-262-7771 F 316-262-0149 ENGINEERING SURVEYING PLANNING LANDSCAPE ARCHITECTURE</small>		
PROJECT NUMBER 472-84290	DESIGN AEG/DMV	DRAWN DVM
REVISIONS:	APPROVED DATE 08/08/16	SCALE NOTED
		SHEET 9 OF 21