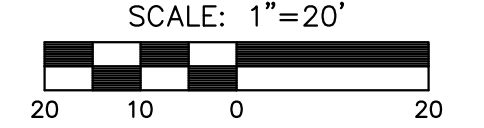


STATE	PROJECT NO.	YEAR	SHEET NO.	TOTAL SHEETS
KANSAS	87 N-0597-01	2016	11	191



SE 1/4 Sec. 33, T27S, R1E



Sta. 6+74.89 Begin  
Proj. No. 87 N-0597-01=  
Sta. 60+08.27 On  
Proj. No. 87 N-0235-01

WOMER & GREER'S  
2ND. ADD.

P.V.I. Sta. 7+71.35  
Elev.=1284.64  
No Curve

BLAIN ADDITION

Sta. 8+78, 44.7' Lt.  
Construct bus bench pad. Remove  
existing bench and store in a safe  
place until ready to install on new  
pad. See Sh. No's. 21 and 83.

P.V.I. Sta. 9+28.00  
Elev.=1284.04  
60' V.C.  
(A=2.63')

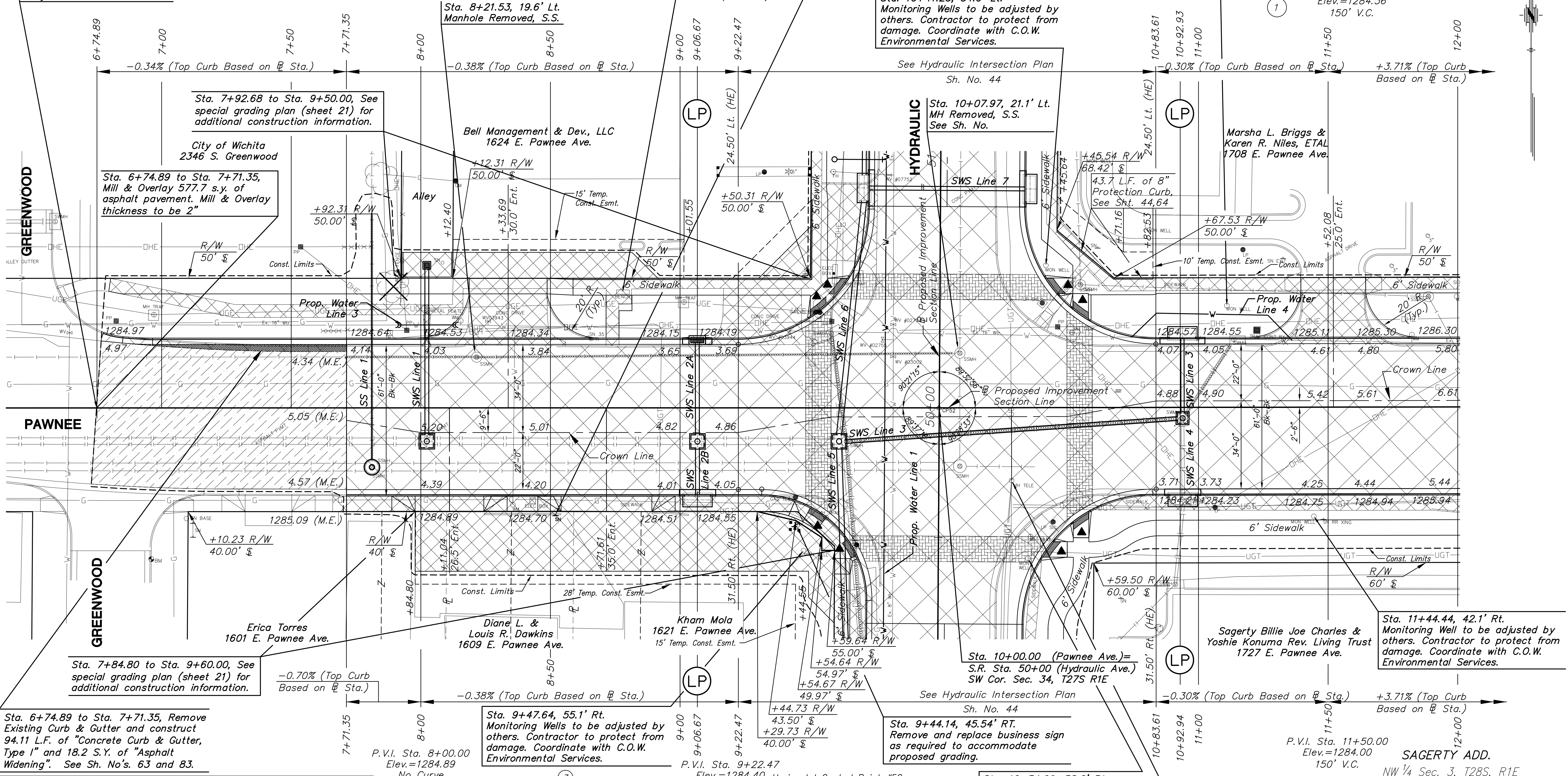
Sta. 8+51.96, 41.30' RT.  
Remove and replace business sign  
as required to accommodate  
proposed grading.

Sta. 11+11.02, 39.2' Lt.  
Monitoring Wells to be adjusted by  
others. Contractor to protect from  
damage. Coordinate with C.O.W.  
Environmental Services.

PIZZA HUT  
PAWNEE/HYDRAULIC ADD.

SW 1/4 Sec. 34, T27S, R1E

P.V.I. Sta. 11+50.00  
Elev.=1284.36  
150' V.C.



UTILITY ADJUSTMENTS				
STATION	OFFSET	EXISTING ELEVATION	PROPOSED ELEVATION	REMARKS
8+15.42	33.6' Lt.	1285.53		Water Meter Relocated (See General Note)
8+25.96	33.5' Lt.	1284.83	1284.58	Valve Box Adjusted
8+35.50	37.3' Rt.	1285.03	1284.83	Water Meter Adjusted
9+42.37	29.7' Lt.	No Elevation	1283.87	Valve Box Adjusted
9+44.50	34.5' Rt.	1284.59	1284.20	Valve Box Adjusted
9+52.45	36.9' Lt.	1285.36	1284.40	Valve Box Adjusted
9+78.07	26.3' Lt.	No Elevation	1284.61	Water Meter Relocated (See General Note)
9+82.24	19.7' Lt.	No Elevation	1284.82	Valve Box Adjusted

UTILITY ADJUSTMENTS				
STATION	OFFSET	EXISTING ELEVATION	PROPOSED ELEVATION	REMARKS
9+82.25	32.2' Lt.	No Elevation	1284.82	Valve Box Adjusted
10+07.87	22.5' Rt.	1284.66	1284.90	Manhole Adjusted w/ New Ring & Cover
10+27.85	28.1' Rt.	1284.27	1284.75	Manhole Adjusted
10+54.54	47.4' Lt.	1285.42	1284.91	Manhole Adjusted w/ New Ring & Cover
11+82.36	27.9' Lt.			Water Meter Relocated (See General Note)
11+88.77	42.6' Lt.	1285.76	1286.4	Manhole Adjusted w/ New Ring & Cover

- Horizontal Control Point #52
- Southwest Corner of Sec. 34, T27S, R1E
  - Sta. 10+00.00, 0.00' Rt.  
N = 1672714.52 E = 1654982.05
  - 3/4" pipe in thimble
  - to "+" on top of curb 47.20' NW
  - to "+" on top of curb 52.74' SW
  - to "+" on top of curb 57.30' SE
  - to "+" on top of curb 49.33' NE

Sta. 10+34.09, 58.2' Rt.  
Cap Monitoring Well. Coordinate  
with C.O.W. Environmental Services.

Sta. 10+27.85, 28.1' Rt.  
Manhole to be removed by others  
during construction. Contractor to  
coordinate removal with Jeff Beamer  
of Wildcat Construction 268-0869.

BM#1 City of Wichita Disk on railroad crossing sign,  
East of Hydraulic, South of Pawnee  
Sta. 12+87.81, 38.71' Rt. El. 1288.35 (NAVD 88)

**LEGEND**

- Mill & Overlay
- Full-depth Asphalt Widening
- Pavement/Walk Removal
- Brick Pavers
- AC Patch
- Stamped, Concrete
- Riprap, Light Stone
- Aggregate Surfacing
- Construct Wheelchair Ramp  
See Sh. No. 44 & 65
- XXXXX SWS or SS Removal
- Tree Removal

STREET IMPROVEMENTS FOR:  
**PAWNEE AVENUE**  
FROM HYDRAULIC TO POPLAR  
WICHITA, KANSAS

©2013  
MKEC Engineering  
All Rights Reserved  
www.mkec.com  
These drawings and their contents,  
including, but not limited to, all concepts,  
designs, & ideas are the exclusive  
property of MKEC Engineering (MKEC),  
and may not be used or reproduced in any  
way without the express consent of MKEC.

PAVING PLAN STA. 6+74.89 TO STA. 12+00	
PROJECT NO.	87 N-0597-01
DATE	DATE
SCALE	1"=20'
DESIGNED	DRAWN
JRA	JSB
CHECKED	LAC
NO.	REVISION
	DATE
SHEET NO.	
11 OF 191	