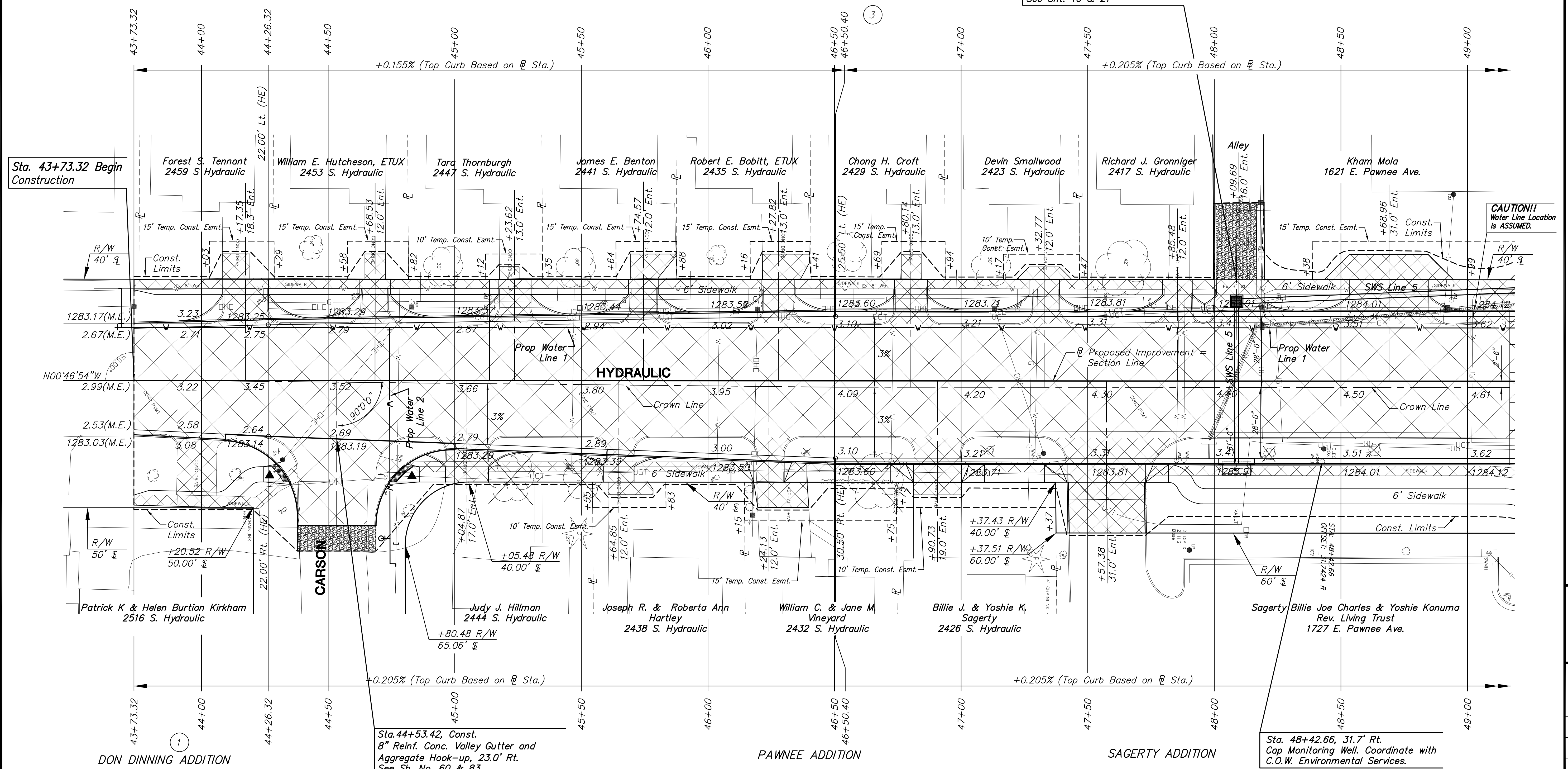
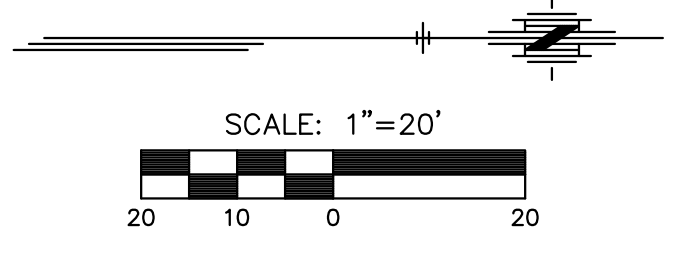




NE 1/4 Sec. 4, T28S, R1E  
**ARCHIE ADAMS ADDITION**

Sta. 48+08.73, 53.3 s.y. of  
 Aggregate Surfacing (AS-1), 2"  
 on Aggregate Base (AB-3), 6".  
 Paid for as "Aggregate Hookup".  
 See Sht. 10 & 21



Sta. 43+73.32 Begin Construction

CAUTION!!  
 Water Line Location is ASSUMED.

STREET IMPROVEMENTS FOR:  
**PAWNEE AVENUE**  
 FROM HYDRAULIC TO POPLAR  
 WICHITA, KANSAS

©2013 MKEC Engineering  
 All Rights Reserved  
 www.mkec.com  
 These drawings and their contents, including, but not limited to, all concepts, designs, & ideas are the exclusive property of MKEC Engineering (MKEC), and may not be used or reproduced in any way without the express consent of MKEC.

PAVING PLAN  
 STA. 43+73.32 TO  
 STA. 49+00

PROJECT NO. 87 N-0597-01  
 DATE DATE  
 SCALE 1"=20'

DESIGNED DRAWN CHECKED  
 JRA JSB LAC

NO.	REVISION	DATE

SHEET NO. 18 OF 191

UTILITY ADJUSTMENTS				
STATION	OFFSET	EXISTING ELEVATION	PROPOSED ELEVATION	REMARKS
44+24.40	32.1' Lt.	1283.61		Water Meter Installed (See General Note)
44+61.50	33.5' Lt.	1283.81		Water Meter Installed (See General Note)
44+77.35	30.3' Rt.	1283.59	1282.90	Valve Box Adjusted
45+13.74	32.8' Lt.	1283.88	1283.91	Water Meter Installed (See General Note)
45+46.21	34.5' Rt.	1283.78		Water Meter Installed (See General Note)
45+59.59	30.4' Lt.	1283.82	1283.77	Water Meter Installed (See General Note)
46+03.58	38.1' Rt.	1283.77	1283.78	Water Meter Installed (See General Note)
46+16.11	30.2' Lt.	1283.50		Water Meter Installed (See General Note)
46+57.34	29.6' Lt.	1284.00	1283.69	Water Meter Installed (See General Note)

UTILITY ADJUSTMENTS				
STATION	OFFSET	EXISTING ELEVATION	PROPOSED ELEVATION	REMARKS
46+72.38	31.6' Rt.	1283.51		Water Meter Installed (See General Note)
47+22.26	28.5' Lt.	1283.99		Water Meter Installed (See General Note)
47+29.21	30.6' Rt.	1283.64		Water Meter Installed (See General Note)
47+76.08	29.5' Lt.	1283.58		Water Meter Installed (See General Note)
47+85.06	31.3' Rt.	1283.88		Water Meter Installed (See General Note)
47+88.01	31.2' Rt.	1283.84		Water Meter Installed (See General Note)
48+09.28	67.4' Lt.	1284.12	1284.09	Manhole Adjusted w/ New Ring & Cover
48+93.63	32.1' Lt.	1284.46	1284.48	Water Meter Installed (See General Note)

NW 1/4 Sec. 3, T28S, R1E

BM#1 City of Wichita Disk on railroad crossing sign,  
 East of Hydraulic, South of Pawnee  
 Sta. 49+63.68, 288.12' Rt. El. 1288.35 (NAVD 88)

- LEGEND**
- Mill & Overlay
  - Full-depth Asphalt Widening
  - Pavement/Walk Removal
  - Brick Pavers
  - AC Patch
  - Stamped, Concrete
  - Riprap, Light Stone
  - Aggregate Surfacing
  - Construct Wheelchair Ramp See Sh. No. 60 & 65
  - SWS or SS Removal
  - Tree Removal