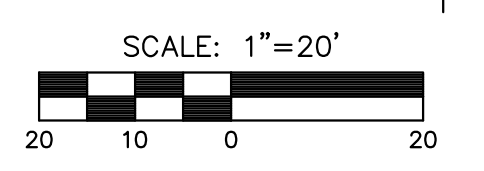
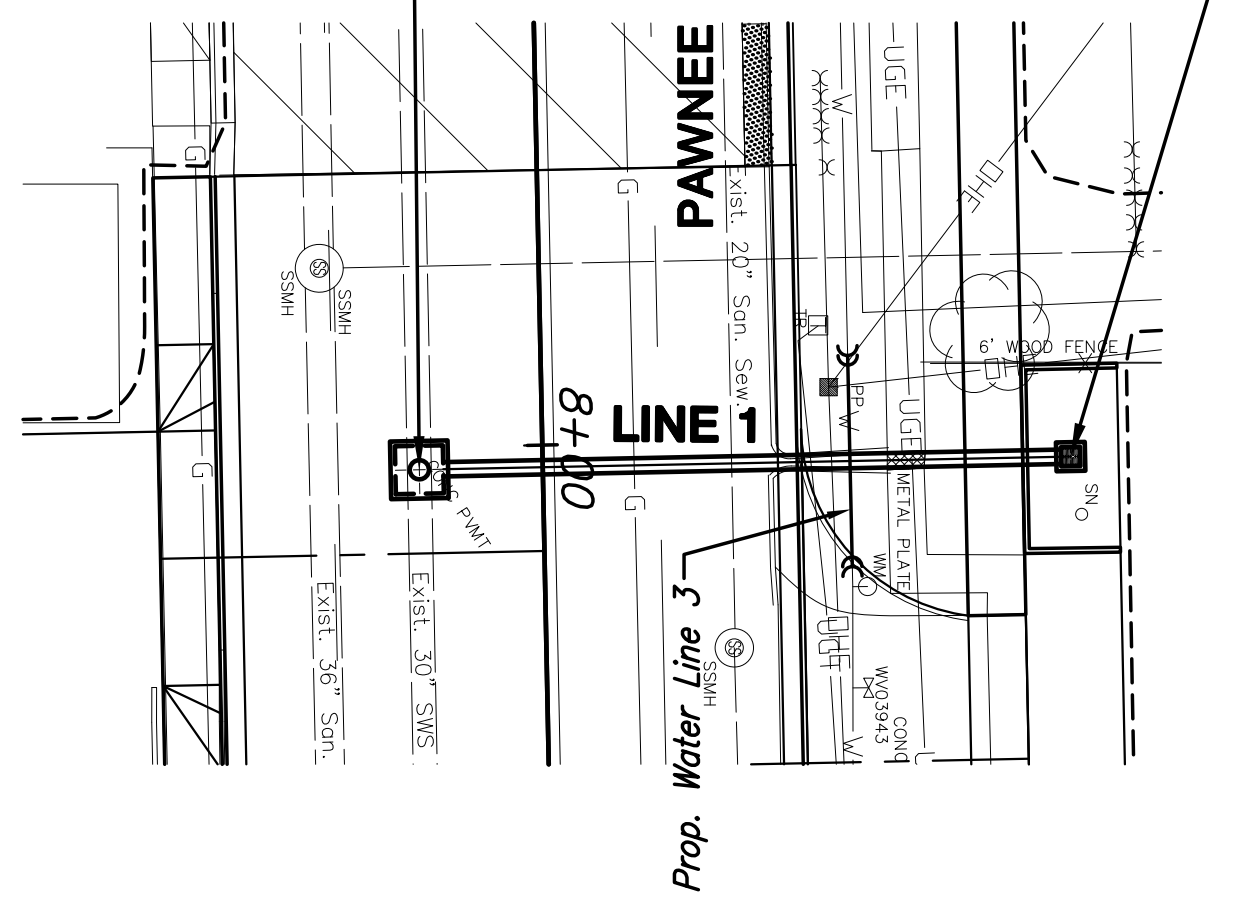


STATE	PROJECT NO.	YEAR	SHEET NO.	TOTAL SHEETS
KANSAS	87 N-0597-01	2016	28	191



Sta. 10+00.00, Line 1=
 @ Sta. 8+02.31, 12.86' Rt.
 Const. Reinf. Conc. Manhole
 L=5'-0", W=5'-0"
 MH Top=1284.91

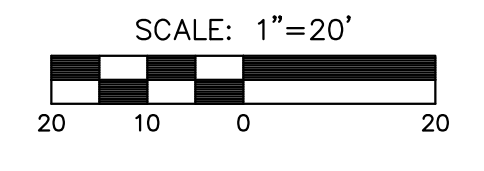
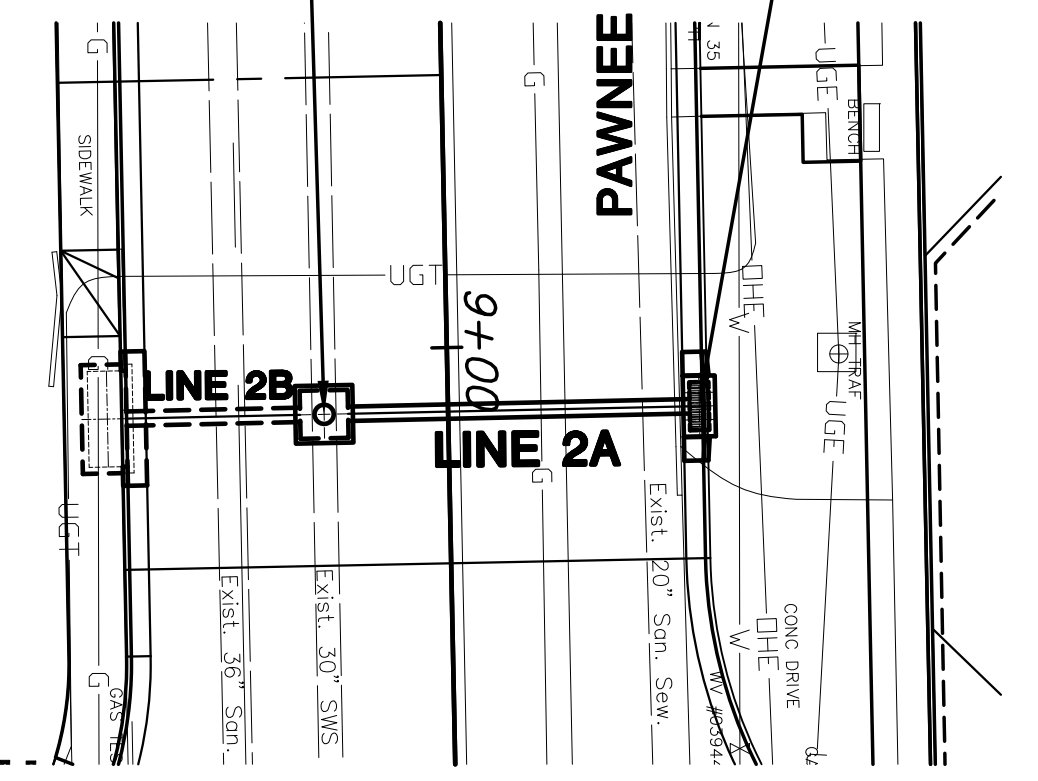
Sta. 10+67.86, Line 1=
 @ Sta. 8+02.31, 55.00 Lt.
 Const. Single Drop Inlet
 L=2'-0", W=2'-0"
 Inlet Top=1285.22



PLAN LINE 1

Sta. 10+00.00, Line 2A=
 @ Sta. 9+06.69, 12.92' Rt.
 Const. Reinf. Conc. Manhole
 L=5'-0", W=5'-0"
 MH Top=1284.85

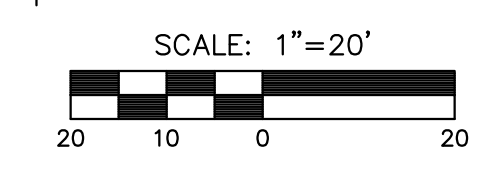
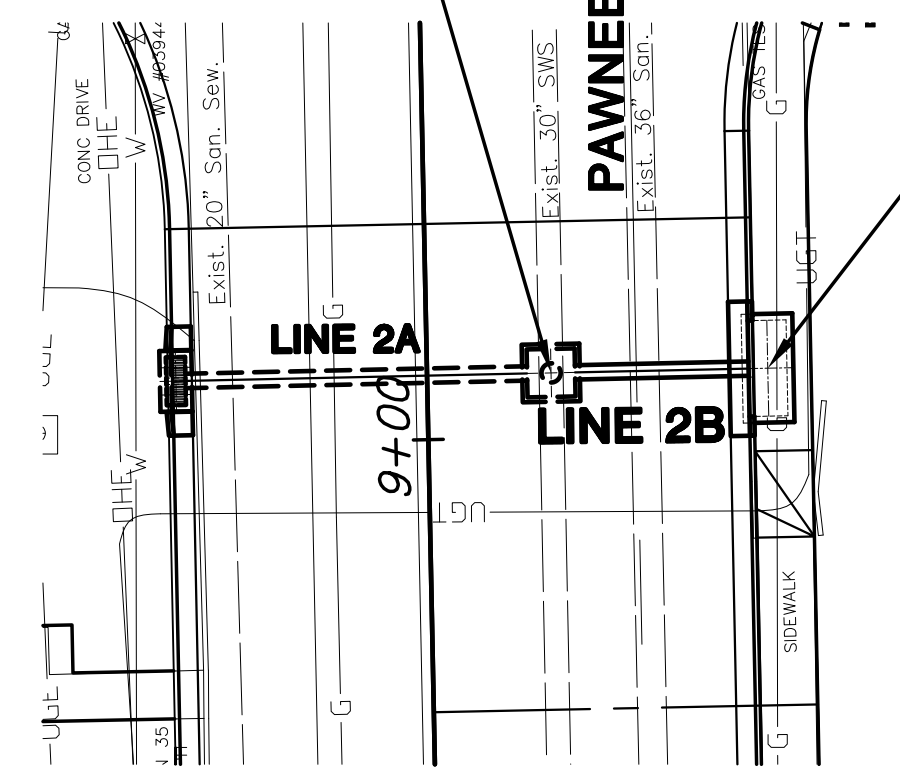
Sta. 10+39.09, Line 2A=
 @ Sta. 9+06.63, 26.17' Lt.
 Const. Std. Dbl. Type 2 Curb Inlet
 L=6'-4", W=3'-4"
 Inlet Top=1284.15



PLAN LINE 2A

Sta. 10+00.00, Line 2B=
 Sta. 10+00.00, Line 2A=
 @ Sta. 9+06.69, 12.92' Rt.

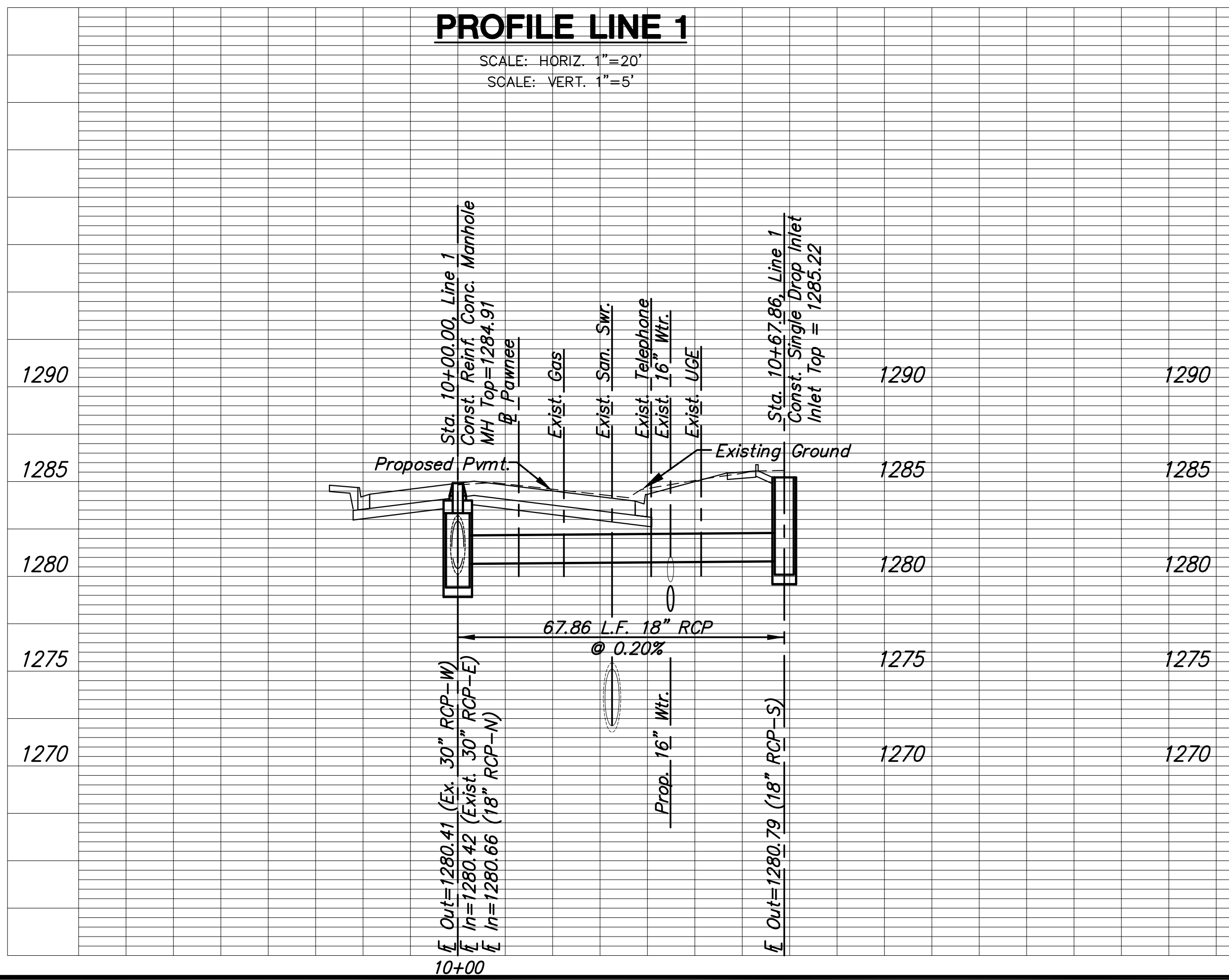
Sta. 10+22.58, Line 2B=
 @ Sta. 9+06.73, 35.50' Rt.
 Const. Std. Type 1 Curb Inlet
 L=10'-0", W=4'-0"
 Inlet Top=1284.55



PLAN LINE 2B

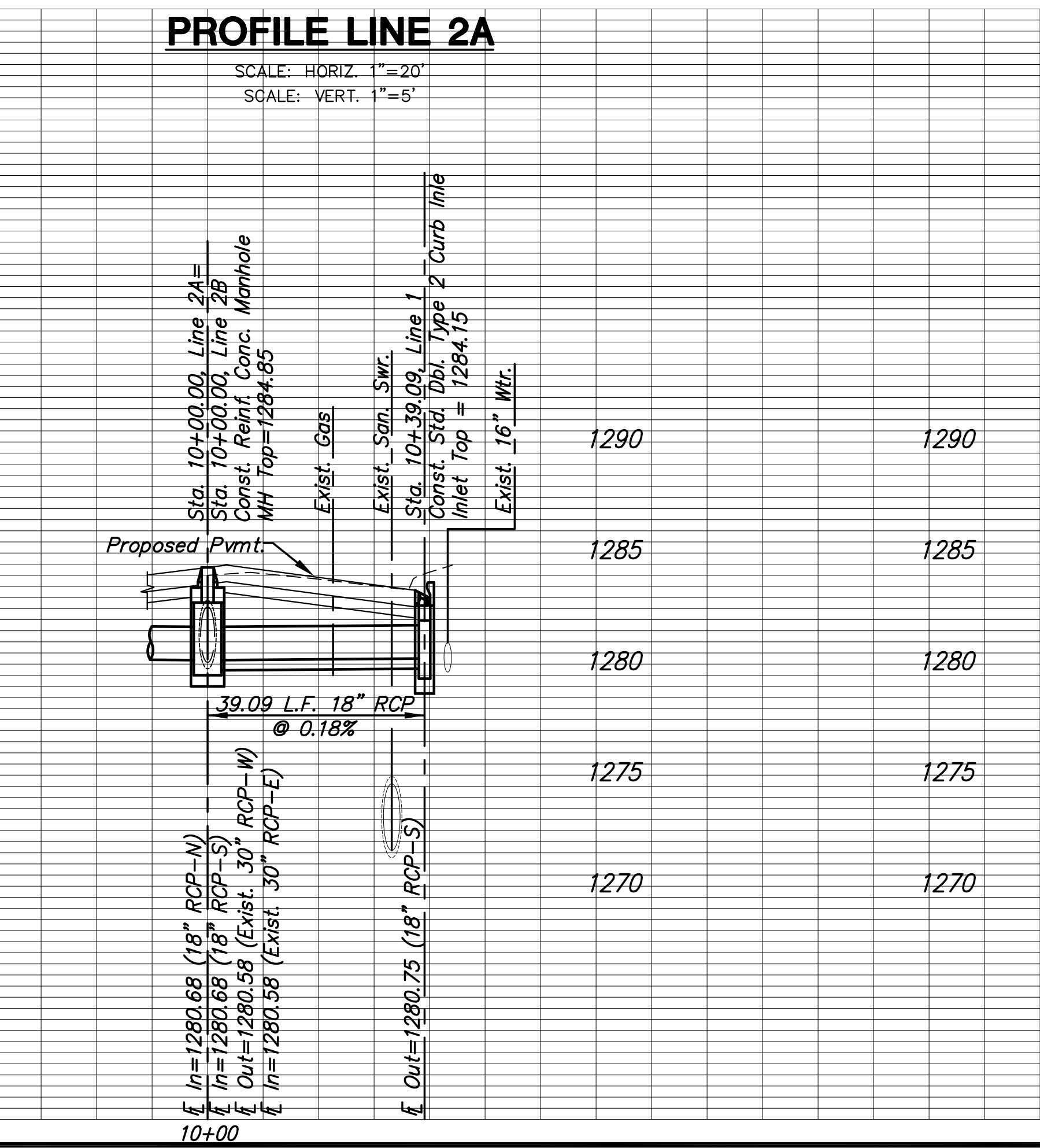
PROFILE LINE 1

SCALE: HORIZ. 1"=20'
 SCALE: VERT. 1"=5'



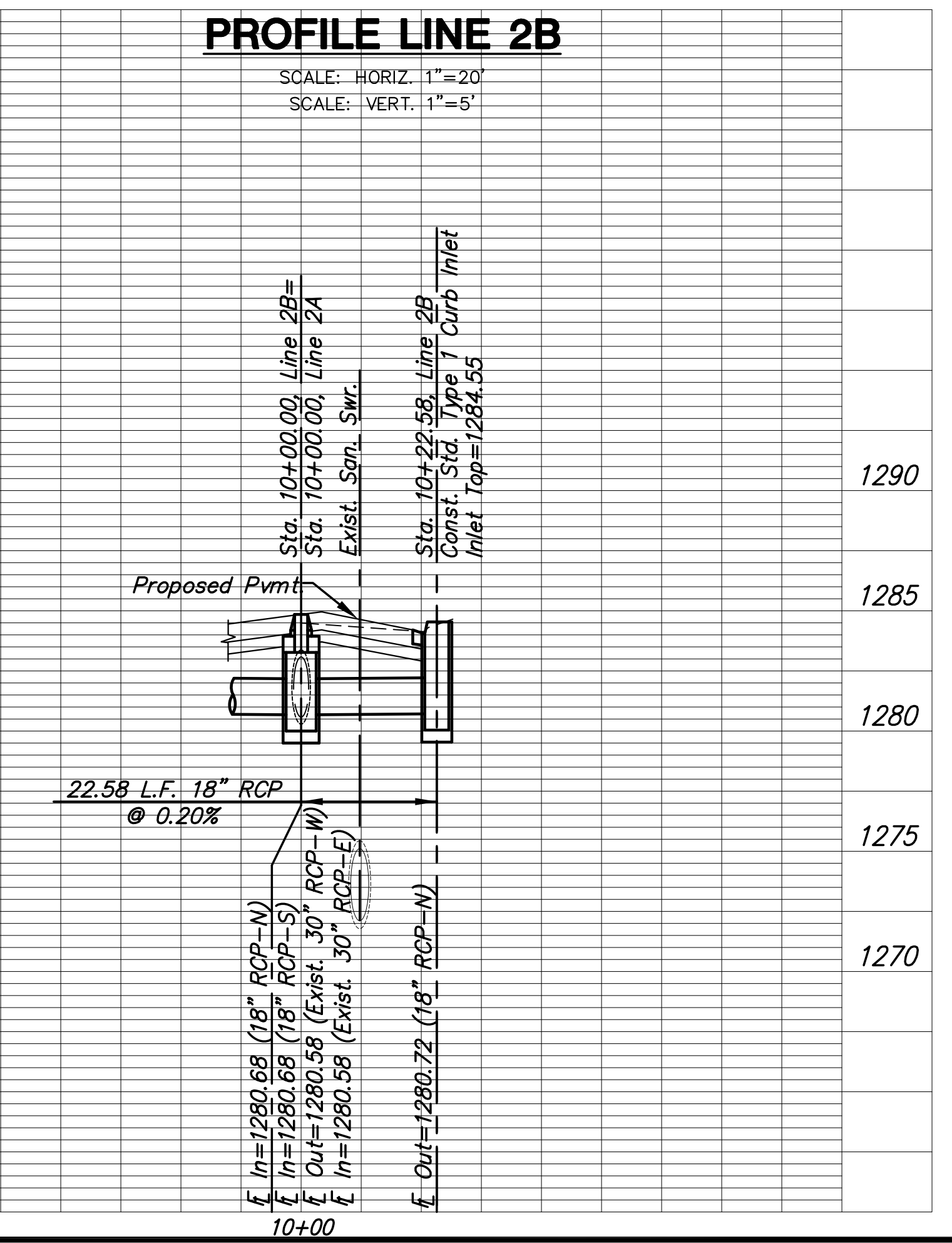
PROFILE LINE 2A

SCALE: HORIZ. 1"=20'
 SCALE: VERT. 1"=5'



PROFILE LINE 2B

SCALE: HORIZ. 1"=20'
 SCALE: VERT. 1"=5'



STREET IMPROVEMENTS FOR:
PAWNEE AVENUE
 FROM HYDRAULIC TO POPLAR
 WICHITA, KANSAS

©2013 MKEC Engineering
 All Rights Reserved
 www.mkec.com
 These drawings and their contents, including, but not limited to, all concepts, designs, & ideas are the exclusive property of MKEC Engineering (MKEC), and may not be used or reproduced in any way without the express consent of MKEC.

STORM SEWER
 LINE 1, LINE 2A
 & LINE 2B

PROJECT NO.	87 N-0597-01	
DATE	DATE	
SCALE	1"=20'HOR/1"=5' VERT	
DESIGNED	DRAWN	CHECKED
JRA	JSB	JRA

NO.	REVISION	DATE

PLOTTED: Monday, May 09, 2016 @ 11:35AM
 J:\CIVIL\05745\DWGS\SW\05745SW5-D01.DWG