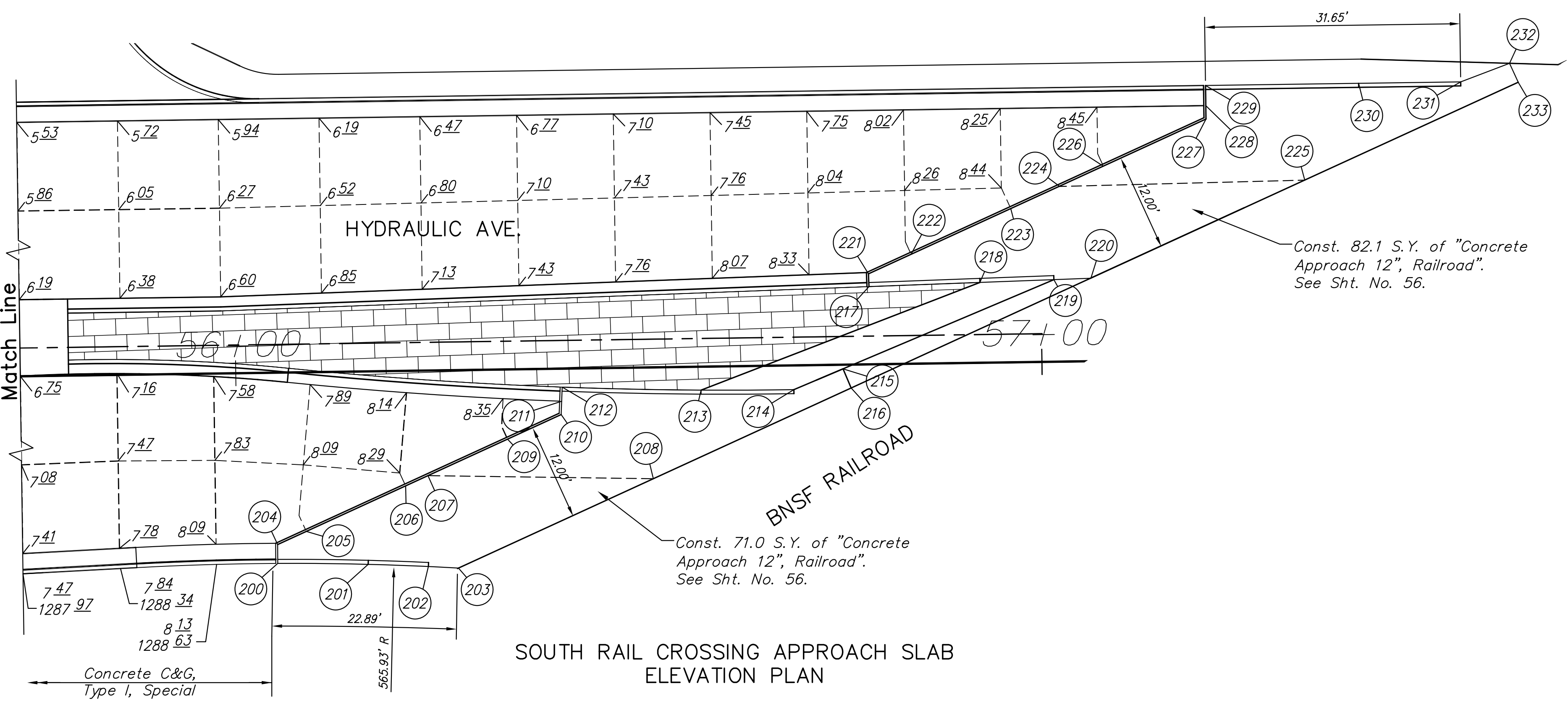
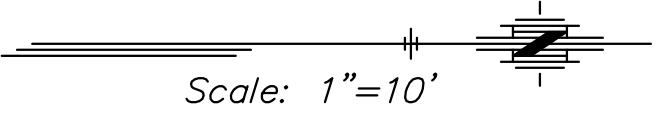
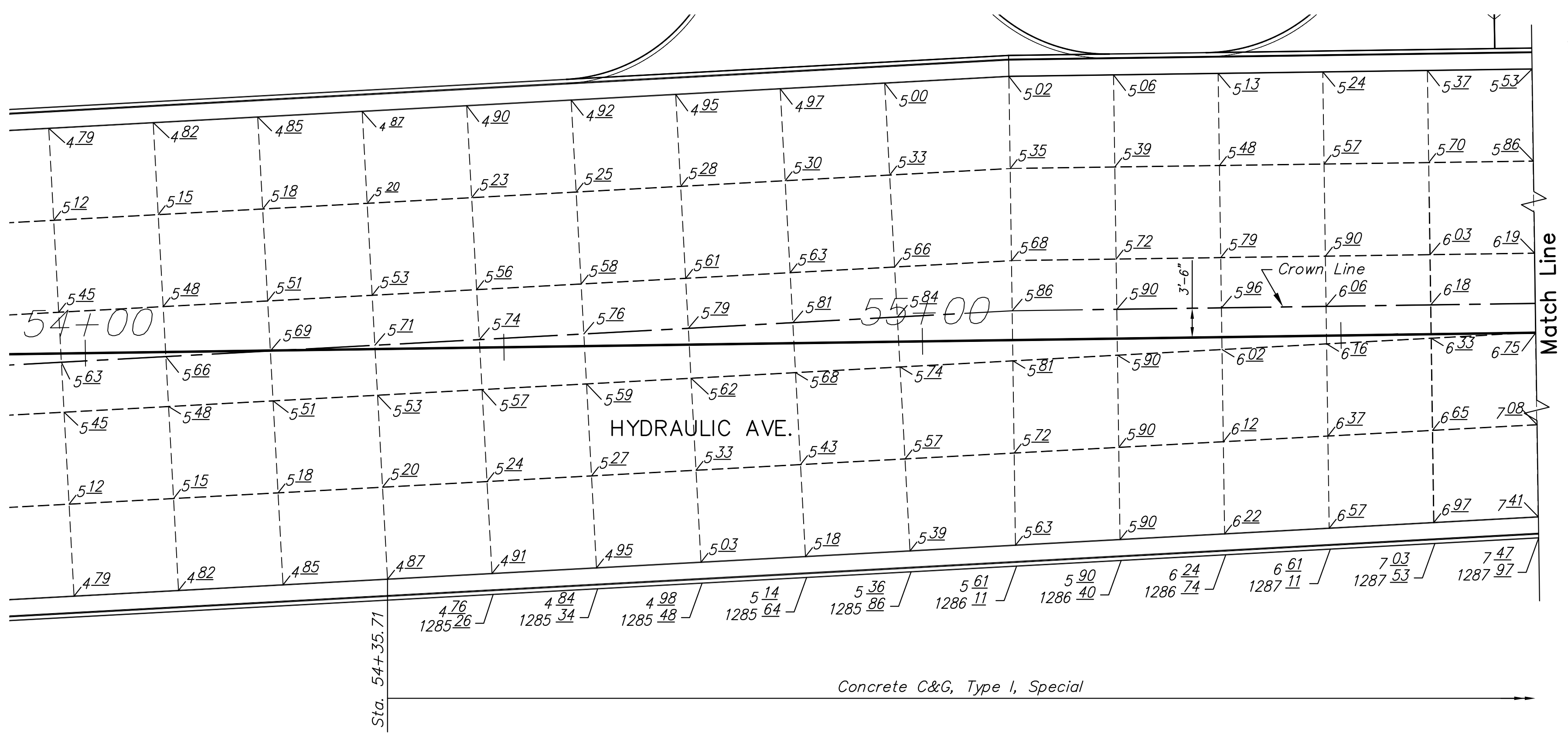


STATE	PROJECT NO.	YEAR	SHEET NO.	TOTAL SHEETS
KANSAS	87 N-0597-01	2016	49	191



Point #	Northing	Easting	Station	Offset	Elevation	Description
200	1673319.6404	1654997.1960	56+04.88	23.66' Rt.	8.26/1288.76	FL/TC
201	1673330.8580	1654997.3101	56+16.09	23.93' Rt.	8.37/1288.87	FL/TC
202	1673338.3219	1654997.5802	56+23.55	24.31' Rt.	8.44/1288.44	FL/TC
203	1673342.0536	1654997.7734	56+27.28	24.55' Rt.	1288.45	FL/TC (M.E.)
204	1673319.6261	1654994.8574	56+04.90	21.32' Rt.	8.23	HE
205	1673323.1830	1654993.2261	56+08.48	19.74' Rt.	8.24	
206	1673335.5001	1654987.5772	56+20.87	14.27' Rt.	8.32	
207	1673338.2710	1654986.3064	56+23.66	13.03' Rt.	8.34	
208	1673366.2214	1654986.6895	56+51.60	13.81' Rt.	8.54	(M.E.)
209	1673348.1394	1654981.7805	56+33.59	8.65' Rt.	8.38	
210	1673354.7891	1654978.7308	56+40.28	5.69' Rt.	8.49	
211	1673354.8517	1654977.0782	56+40.37	4.04' Rt.	8.44	HE
212	1673354.9179	1654975.3277	56+40.46	2.29' Rt.	8.44/1288.94	FL/TC
213	1673372.1464	1654975.6975	56+57.68	2.90' Rt.	8.50/1289.00	FL/TC
214	1673383.6562	1654975.6387	56+69.19	3.01' Rt.	8.57/1288.57	FL/TC
215	1673389.7539	1654973.0592	56+75.32	0.51' Rt.	1288.58	
216	1673390.7593	1654975.4358	56+76.30	2.90' Rt.	1288.58	(M.E.)
217	1673392.9674	1654962.8586	56+78.68	9.64' Lt.	8.48/1288.98	FL/TC
218	1673406.7288	1654962.3410	56+92.45	9.96' Lt.	8.58/1289.08	FL/TC
219	1673415.9057	1654961.9959	57+01.63	10.18' Lt.	8.64/1288.64	FL/TC
220	1673420.4939	1654961.8234	57+06.22	10.29' Lt.	1288.67	(M.E.)
221	1673392.9079	1654961.2758	56+78.64	11.22' Lt.	8.44	HE
222	1673398.1923	1654958.8516	56+83.96	13.57' Lt.	8.48	
223	1673410.5540	1654953.1808	56+96.40	19.07' Lt.	8.55	
224	1673416.6337	1654950.4386	57+02.52	21.73' Lt.	8.58	
225	1673447.0237	1654949.6531	57+32.92	22.08' Lt.	8.72	(M.E.)
226	1673422.0346	1654947.9142	57+07.95	24.17' Lt.	8.60	
227	1673434.7693	1654942.0723	57+20.77	29.84' Lt.	8.66	
228	1673434.7459	1654940.4096	57+20.77	31.50' Lt.	8.59	HE
229	1673434.7107	1654937.9098	57+20.77	34.00' Lt.	8.53/1289.03	FL/TC
230	1673453.7030	1654937.6425	57+39.76	34.00' Lt.	8.65/1289.15	FL/TC
231	1673466.3617	1654937.4643	57+52.42	34.00' Lt.	8.73/1288.73	FL/TC
232	1673472.4189	1654935.1611	37+58.51	36.22' Lt.	1288.78	
233	1673473.4960	1654937.5092	57+59.56	33.85' Lt.	1288.78	(M.E.)

STREET IMPROVEMENTS FOR:  
**PAWNEE AVENUE**  
**FROM HYDRAULIC TO POPLAR**  
 WICHITA, KANSAS

©2013 MKEC Engineering All Rights Reserved www.mkec.com These drawings and their contents, including, but not limited to, all concepts, designs, & ideas are the exclusive property of MKEC Engineering (MKEC), and may not be used or reproduced in any way without the express consent of MKEC.

**RAILROAD APPROACH PLAN (HYDRAULIC)**

PROJECT NO.	87 N-0597-01	
DATE	DATE	
SCALE	1" = 10'	
DESIGNED	DRAWN	CHECKED
JRA	JSB	JRA
NO.	REVISION	DATE
SHEET NO.		
49 OF 191		

J:\CIVIL\05745\DOMINGO\BRIDGE\05745\APPR-HYD.DWG  
 PLOTTED: Monday, May 09, 2016 @ 11:25AM