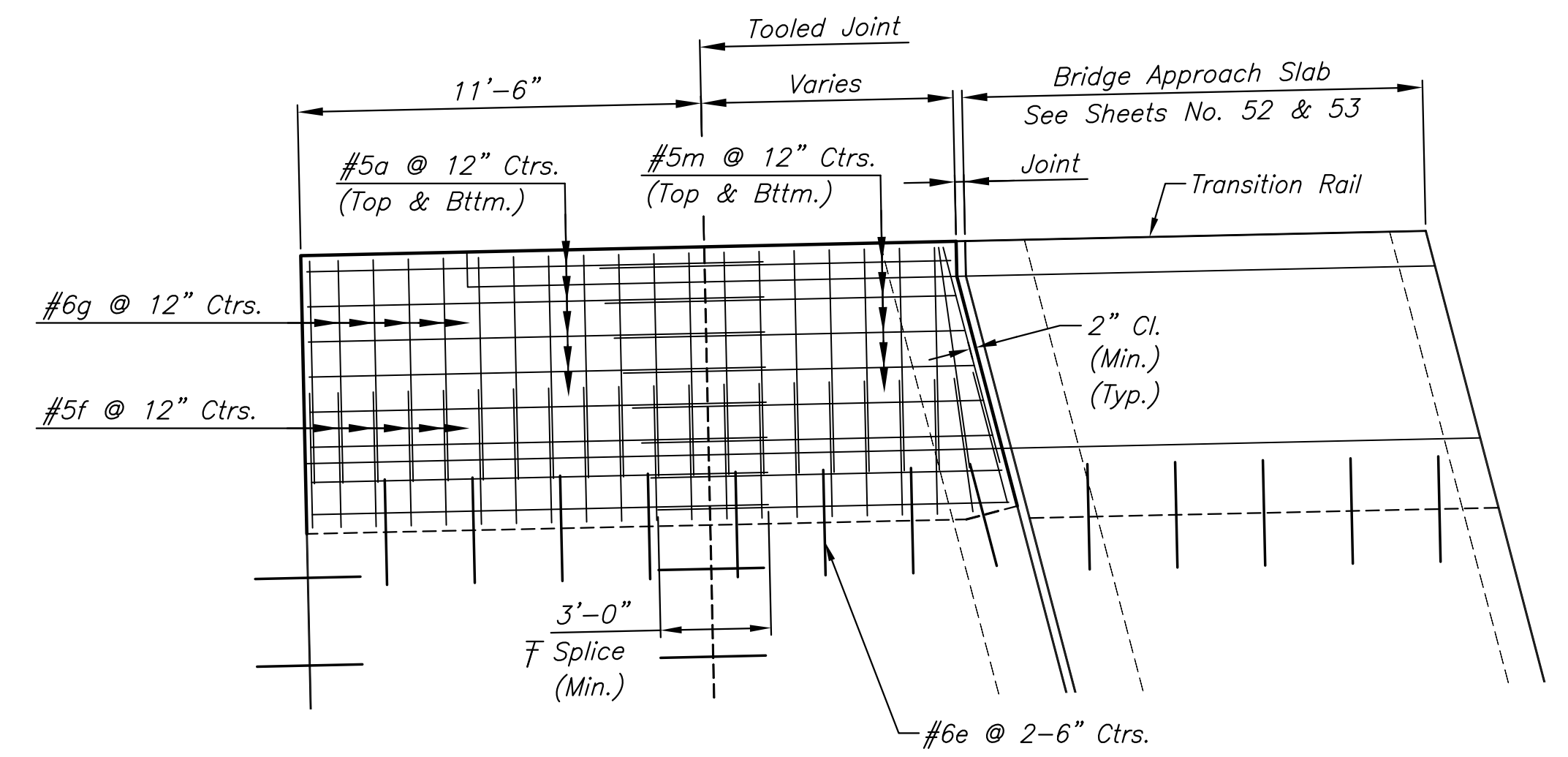
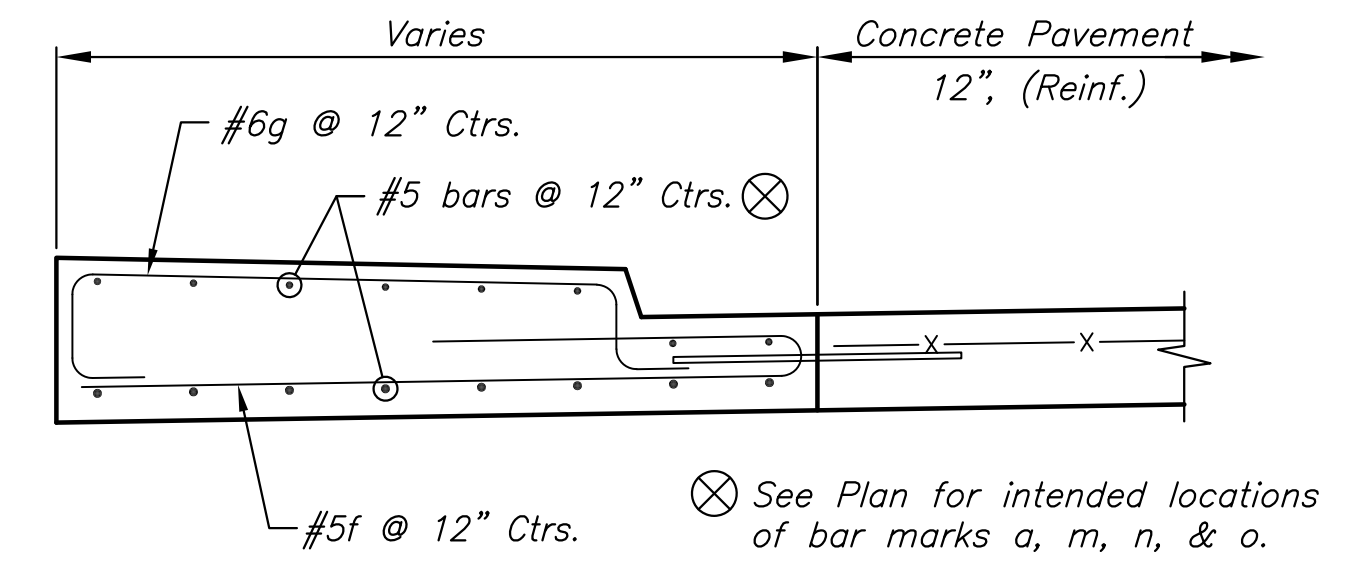


STATE	PROJECT NO.	YEAR	SHEET NO.	TOTAL SHEETS
KANSAS	87 N-0597-01	2016	54	191



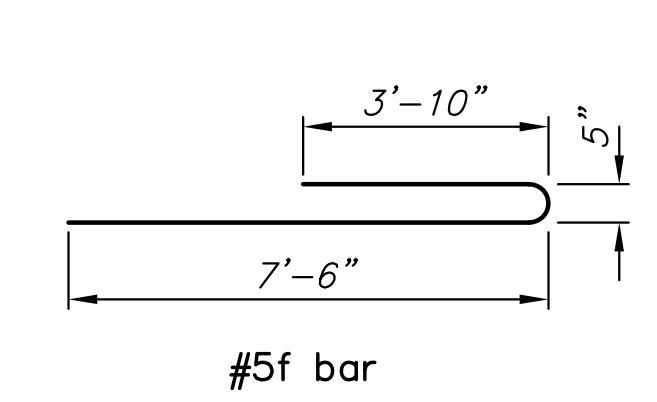
SIDEWALK SLAB (LONG) PLAN
(See Sheet No. 48 for spot elevations)

Splice longitudinal bars at tooled joint as shown. Increase splice length as required to provide end clearance.

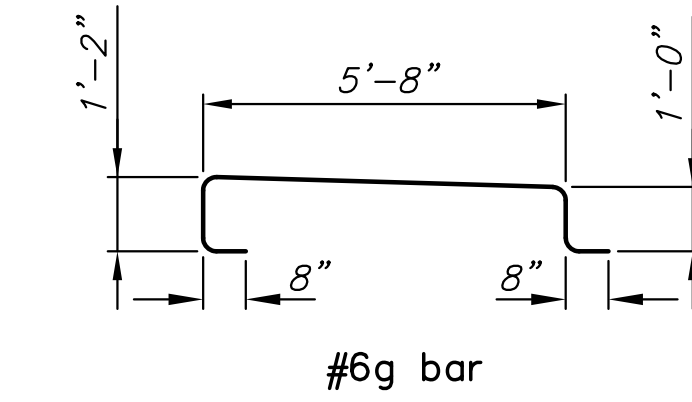


SIDEWALK SLAB TYPICAL SECTION
(See Sheet No. 48 for spot elevations)

NOTE: Concrete and reinforcing steel for Transition Rails are not shown for clarity. Refer to Sheets No. 52 & 53 for more information.

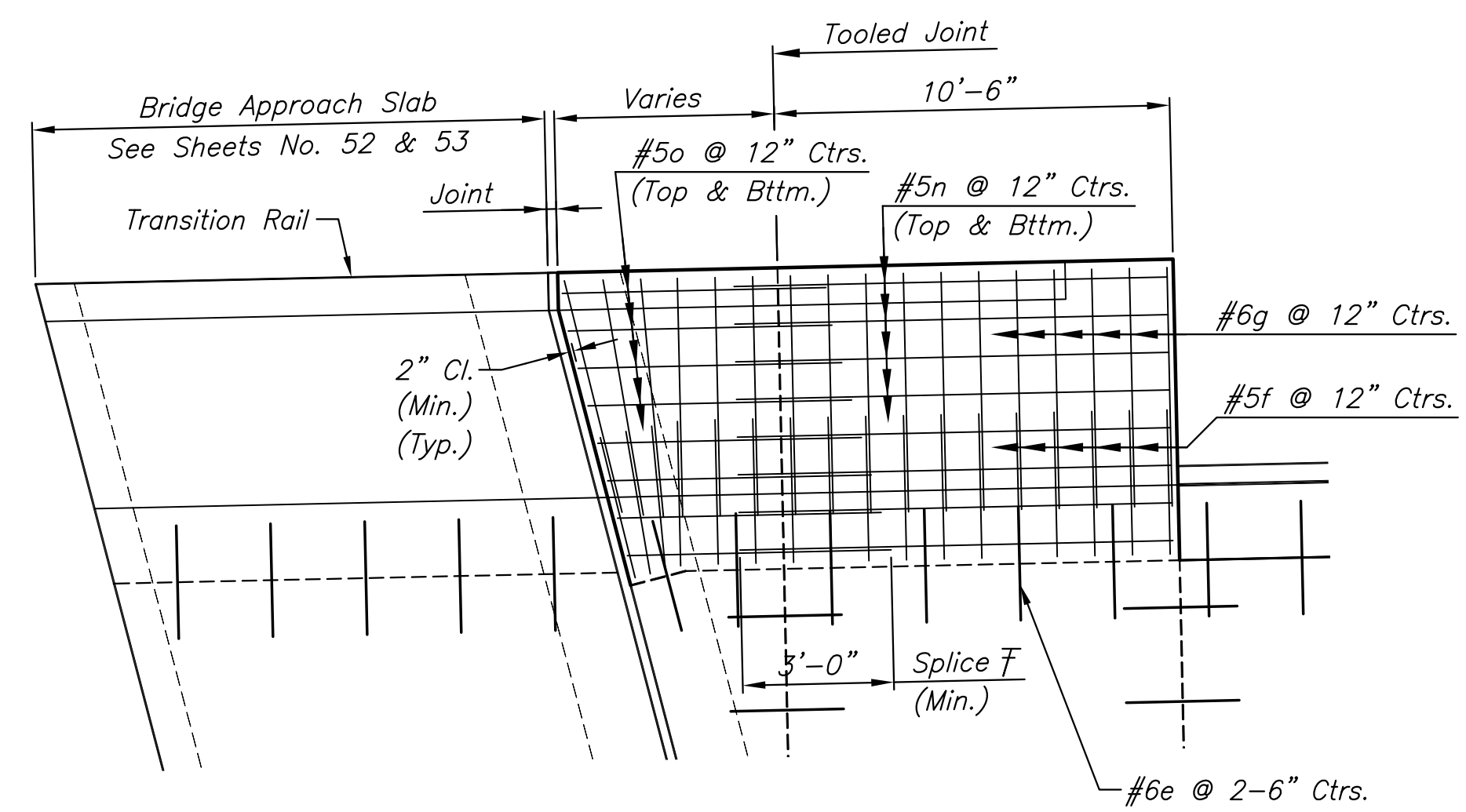


#5f bar



#6g bar

BENDING DIAGRAMS
All dimensions are out to out unless otherwise noted.



SIDEWALK SLAB (SHORT) PLAN
(See Sheet No. 48 for spot elevations)

GENERAL NOTES

- All work and materials required for the construction of Bridge Approach Sidewalk Slabs shall be considered subsidiary to the bid item "Concrete Pavement 12", (Reinf.)".
- Refer to Sheets No. 52 & 53 for locations of Sidewalk Slabs (Long & Short). See the General Notes on the same sheets for information on reinforcing steel and preparation of adjacent concrete during construction.
- The Bill of Materials shown on this sheet includes a bar schedule for one (1) of each type of slab. Two (2) of each slab will be required. Quantities for #6e bars are included in the "Bill of Materials" for each Bridge Approach on Sheets No. 52 & 53.
- Refer to "Transition Rail Elevation" and General Note 2 on Sheets No. 52 & 53 for additional information.
- Reinforcing steel for Transition Rails, as shown on Sheets No. 52 & 53 will be tied to transverse bars shown in the "Sidewalk Slab Typical Section". See "NOTE".
- Minor variations in slab dimensions of the same type may require varying splice lengths to achieve minimum plan clearances.

BILL OF MATERIALS (ONE SLAB EACH ONLY)					
Bar Schedule					
△ See Bending Diagram					
Long	Bar	a	m	△ f	△ g
	No.	16	16	21	21
	Size	#5	#5	#5	#6
Short	Bar	n	m	△ f	△ g
	No.	16	16	17	17
	Size	#5	#5	#5	#6
	Length	13'-0"	10'-0"	11'-9"	9'-2"
	Length	11'-6"	7'-0"	11'-9"	9'-2"

STREET IMPROVEMENTS FOR:
PAWNEE AVENUE
FROM HYDRAULIC TO POPLAR
WICHITA, KANSAS

©2013 MKEC Engineering All Rights Reserved www.mkec.com These drawings and their contents, including, but not limited to, all concepts, designs, & ideas are the exclusive property of MKEC Engineering (MKEC), and may not be used or reproduced in any way without the express consent of MKEC.

BRIDGE APPROACH SIDEWALK SLABS DETAILS

PROJECT NO.	87 N-0597-01	
DATE	DATE	
SCALE	NO SCALE	
DESIGNED	DRAWN	CHECKED
JRA	DMU	JRA
NO.	REVISION	DATE

J:\CIVIL\05745\DWG\PAV\05745APP\WALK.DWG
 PLOTTED: Monday, May 09, 2016 @ 03:29PM