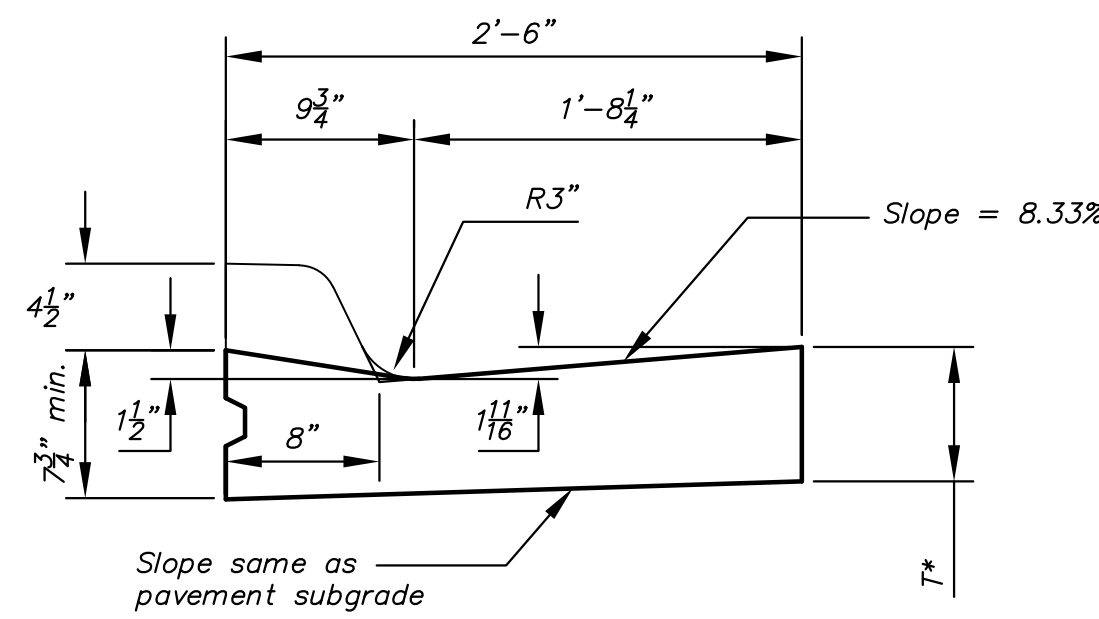
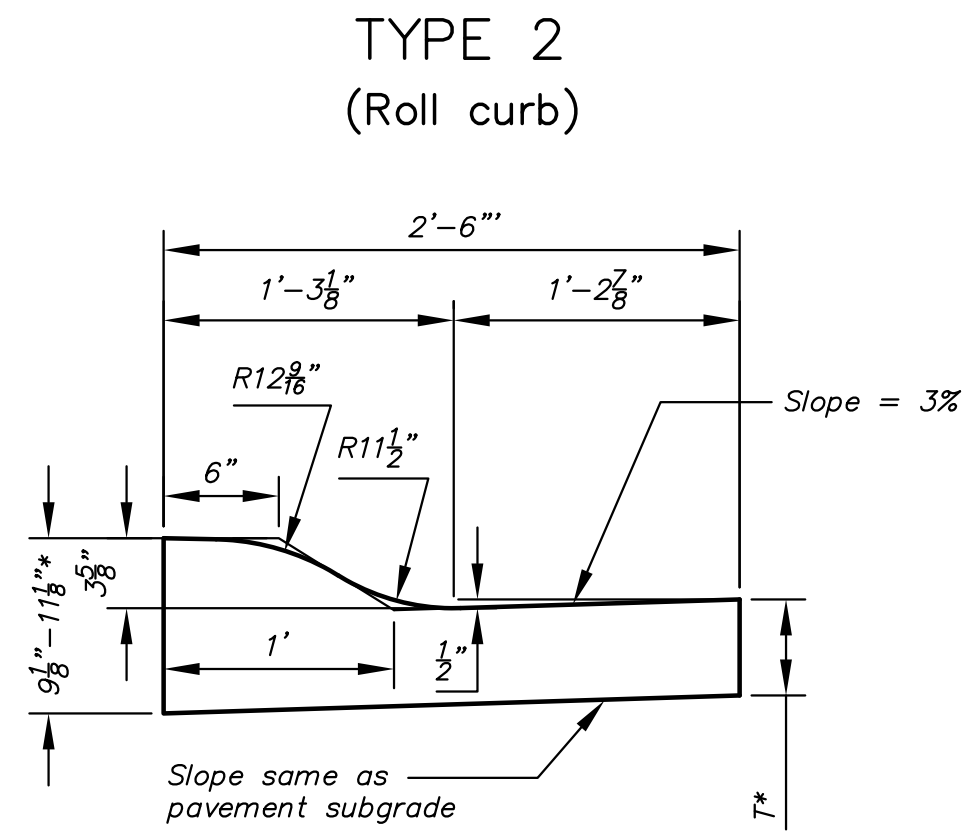


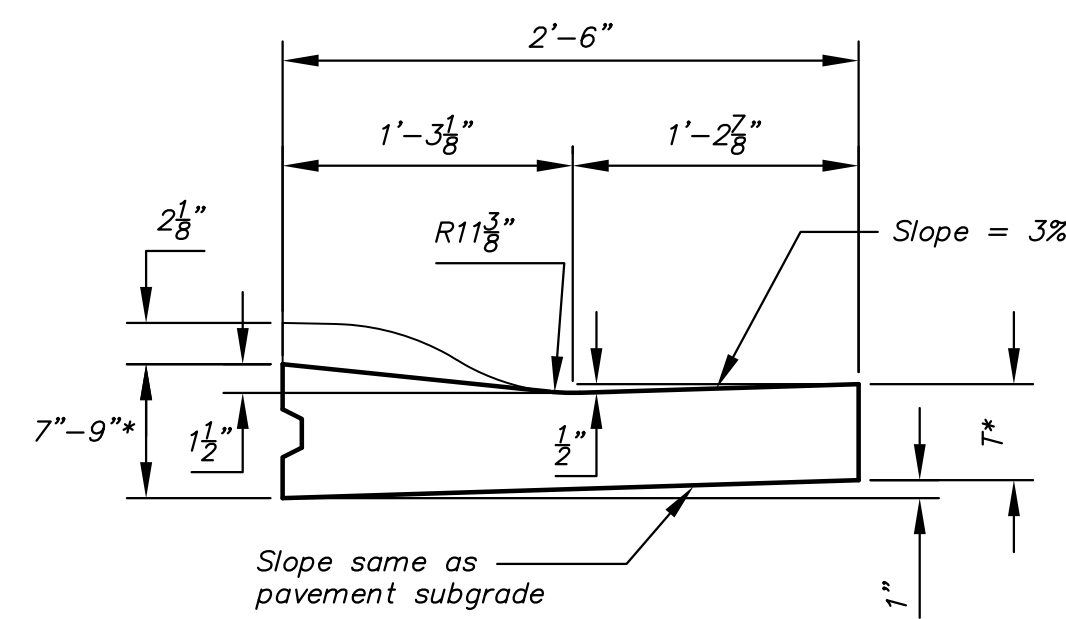
Combined Curb & Gutter (6")



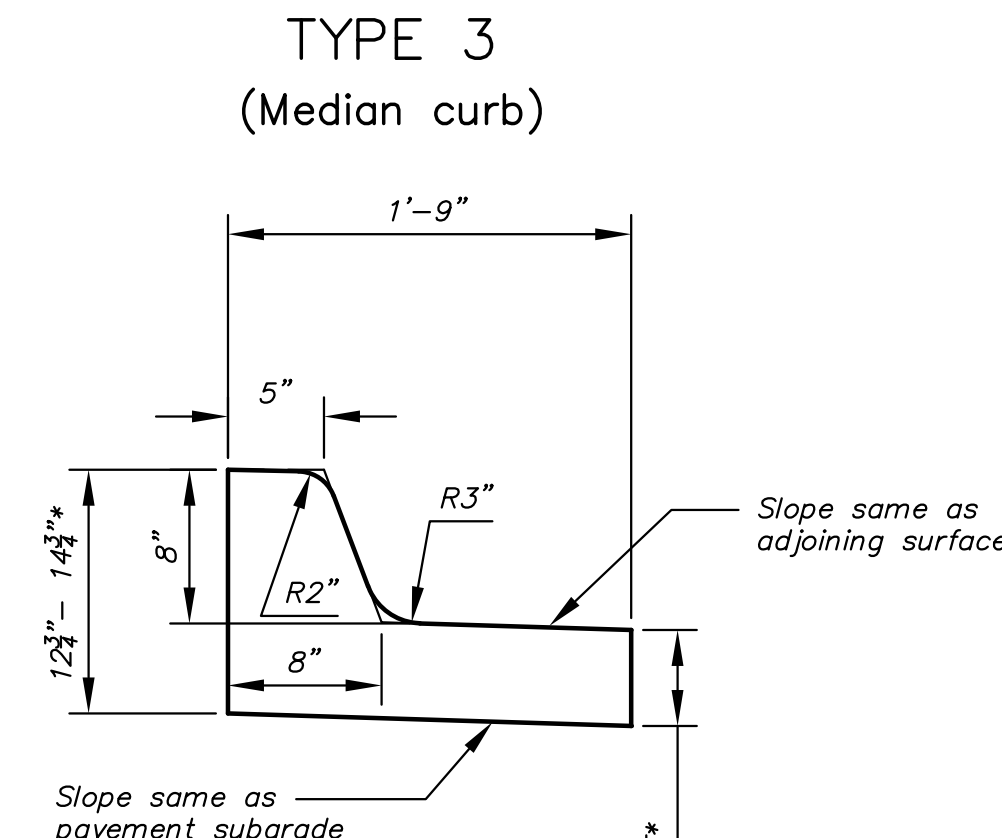
Combined Curb & Gutter (1 1/2")



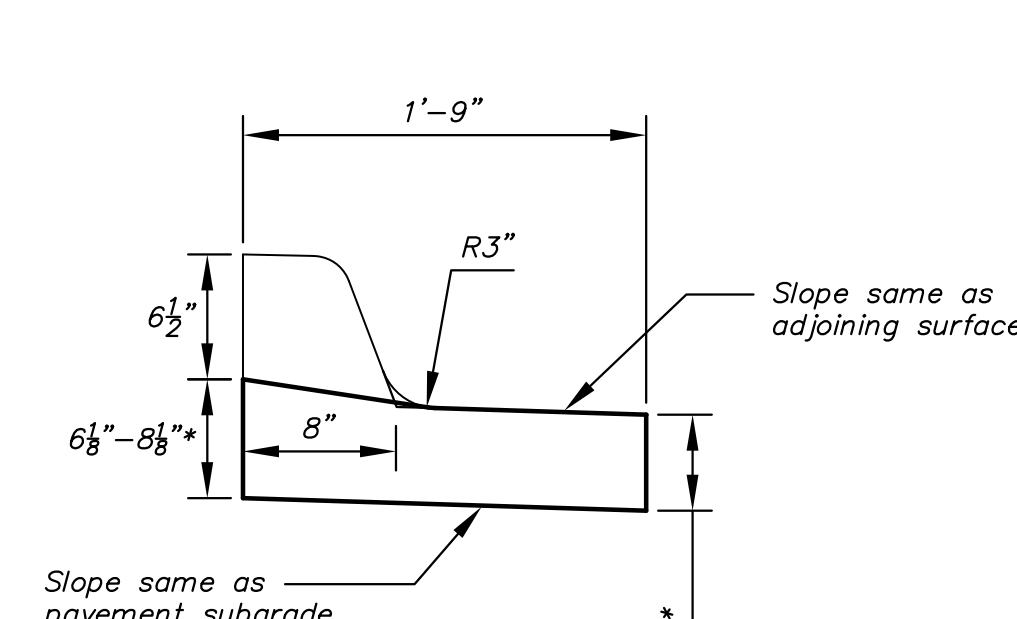
Combined Curb & Gutter (3 5/8")



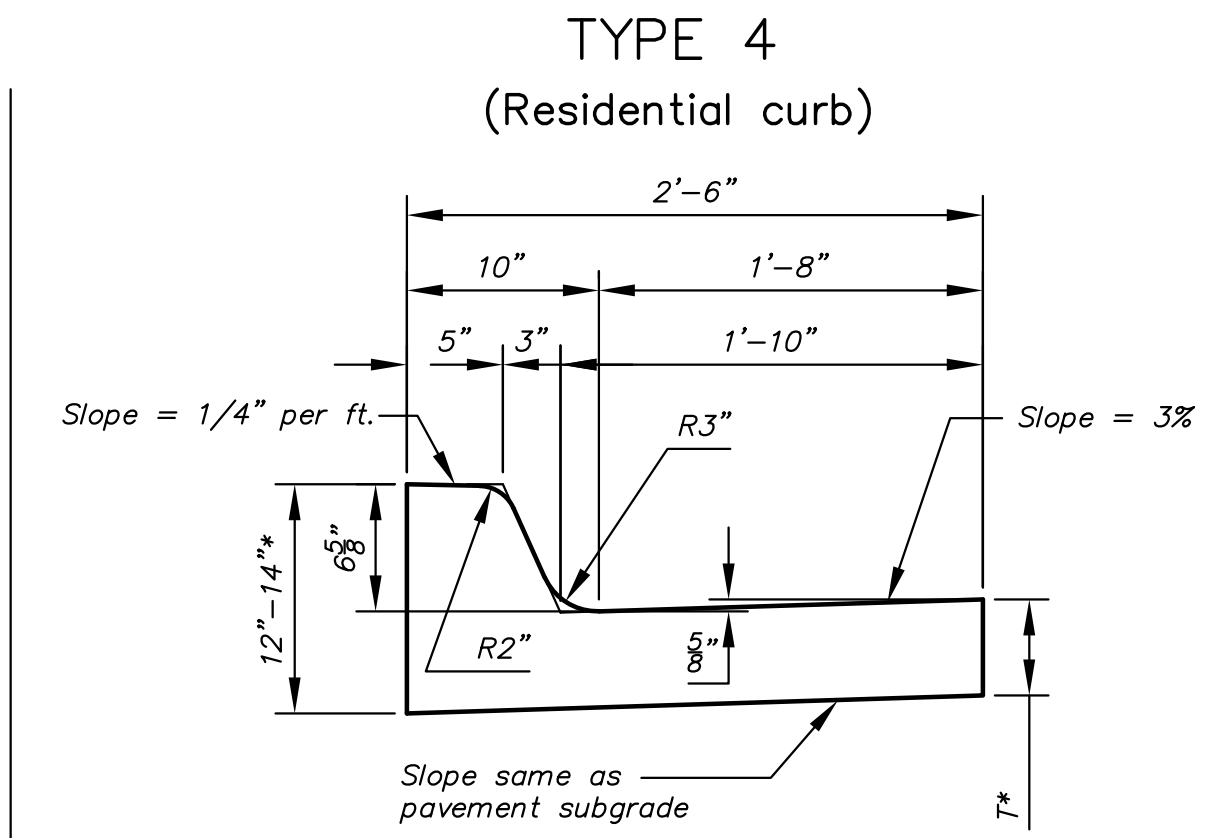
Combined Curb & Gutter (1 1/2")



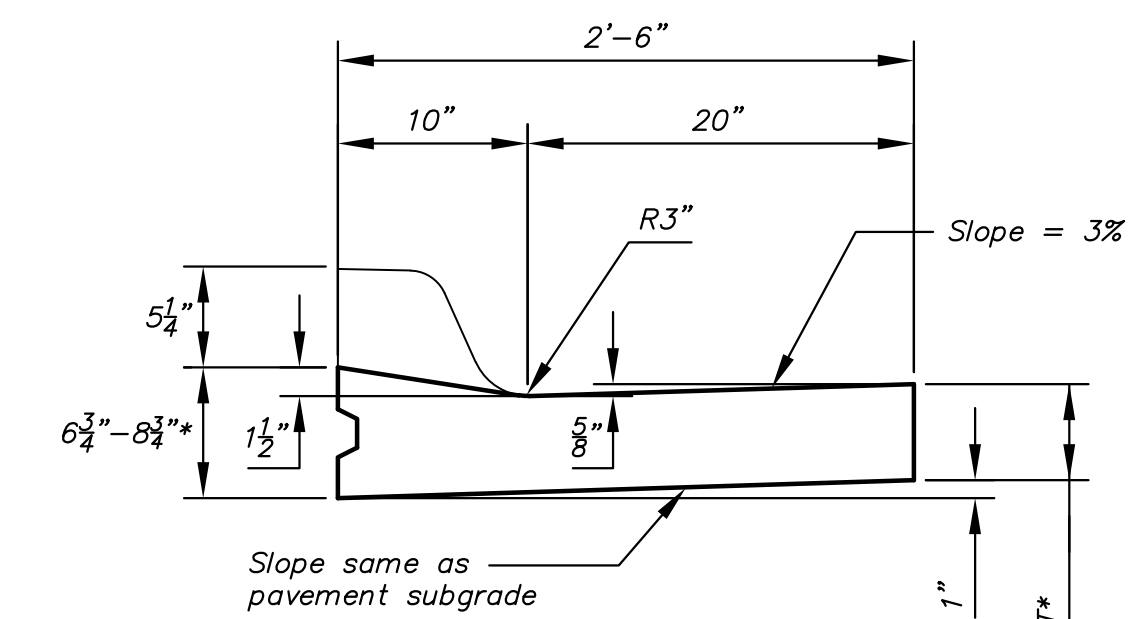
Combined Curb & Gutter (8")



Combined Curb & Gutter (1 1/2")

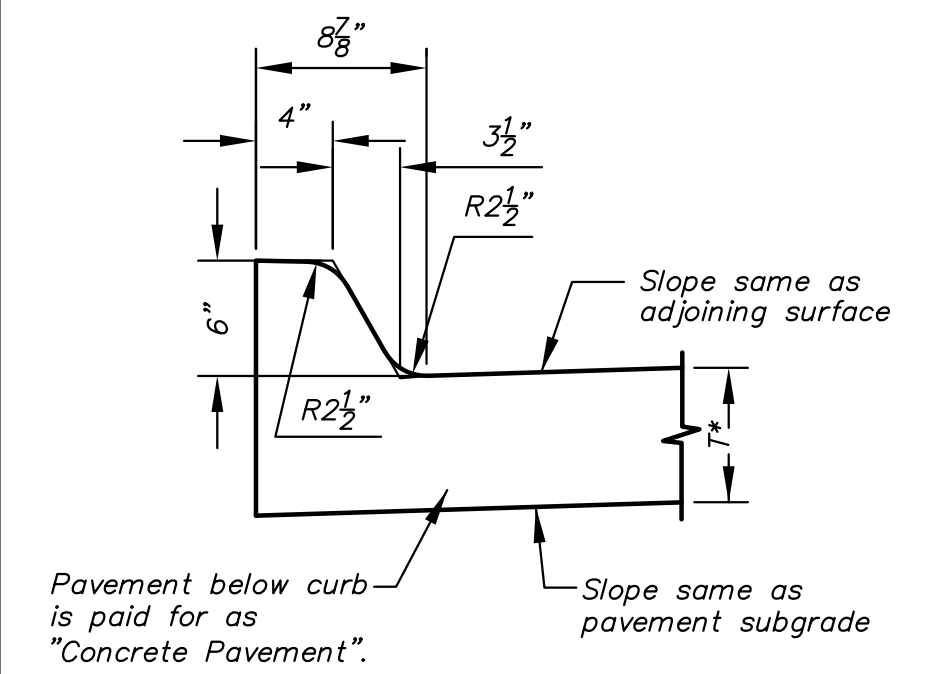


Combined Curb & Gutter (6 5/8")

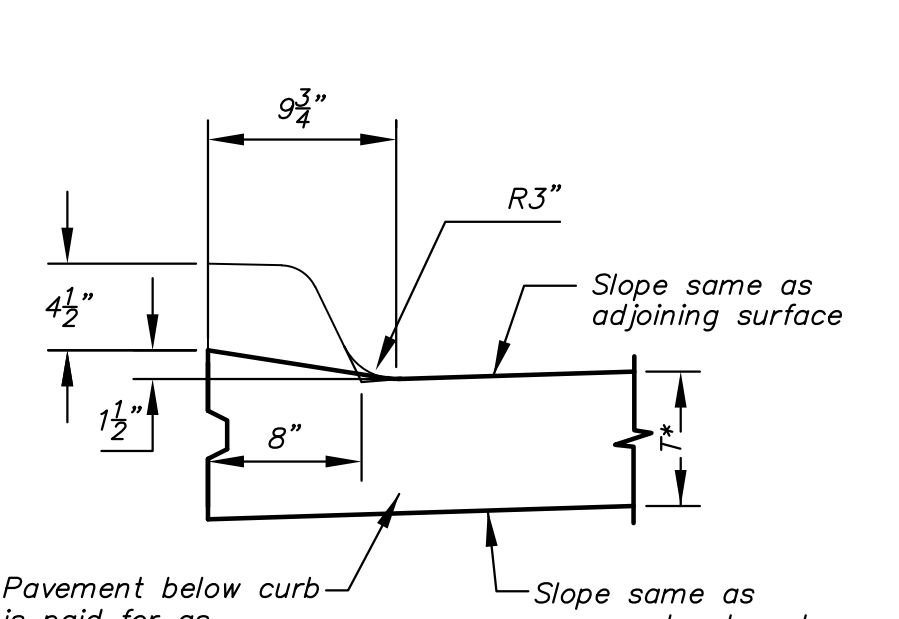


Combined Curb & Gutter (1 1/2")

MONOLITHIC EDGE CURB

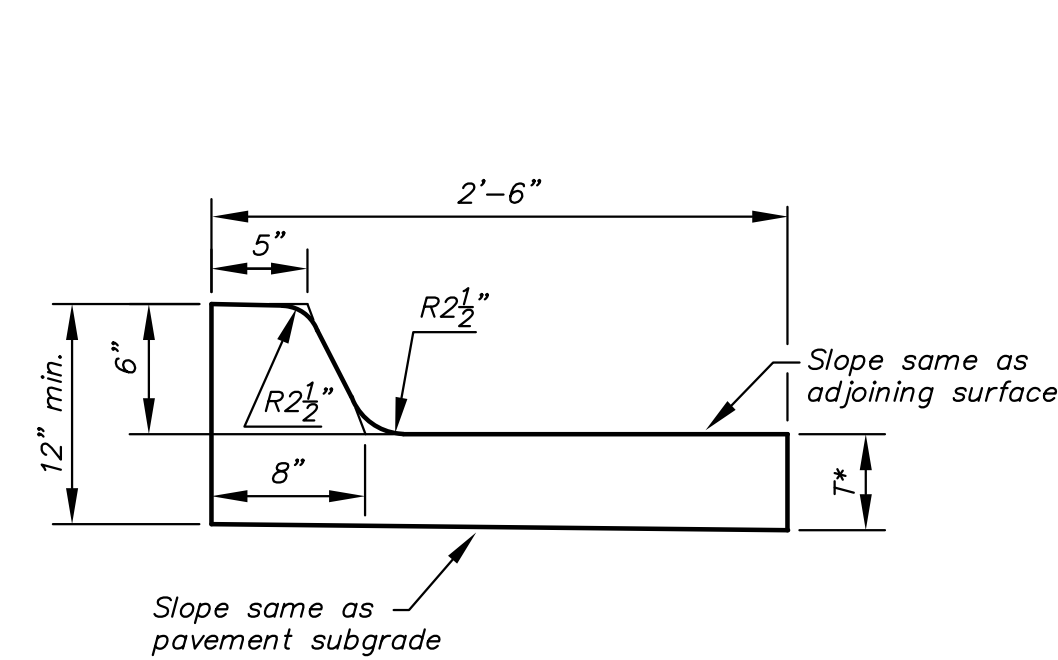


Concrete Curb, Mono Edge (6")

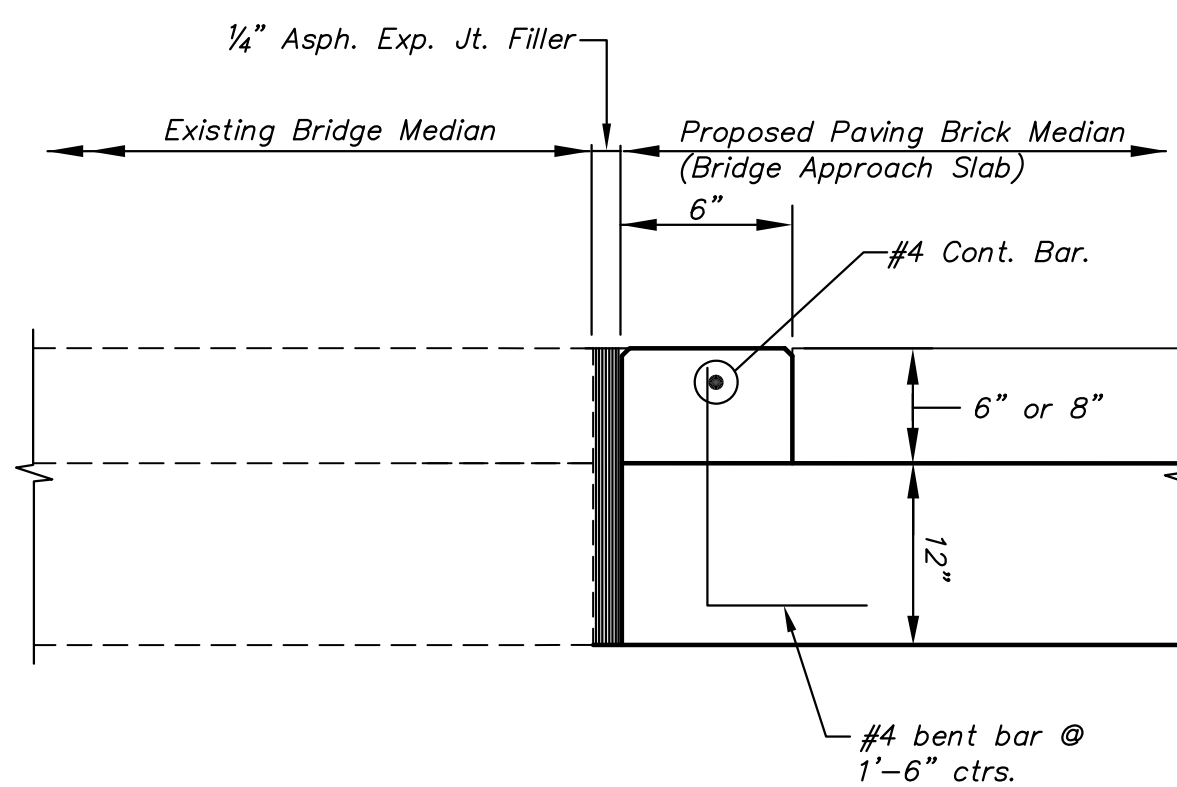


Concrete Curb, Mono Edge (1 1/2")

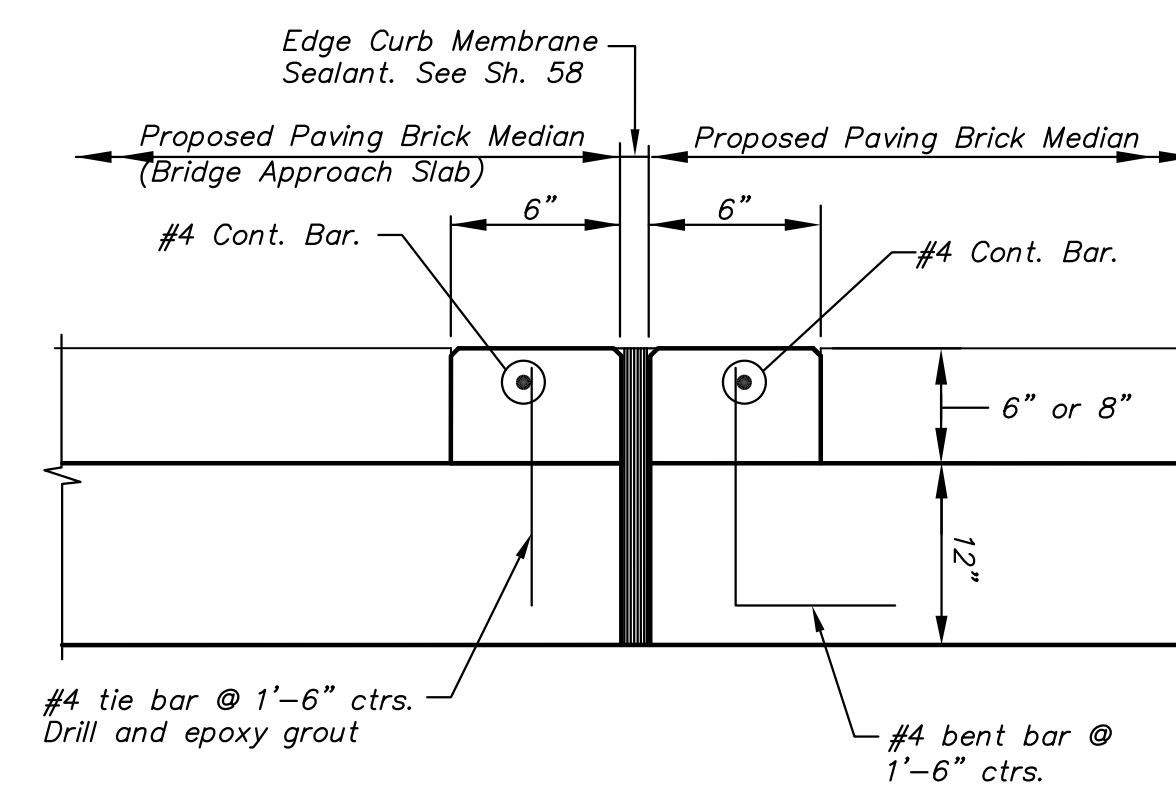
T* = Thickness of curb to adjust with pavement thickness



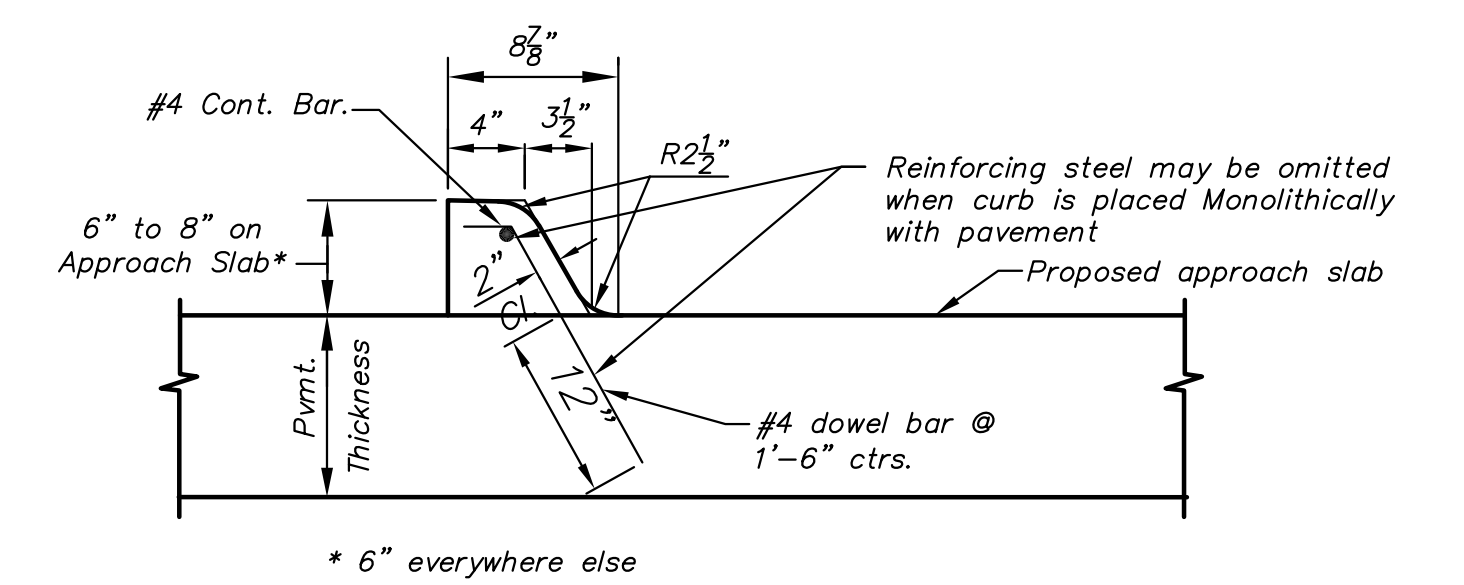
COMBINED C & G, TYPE 1 (6" & 1 1/2"), SPECIAL



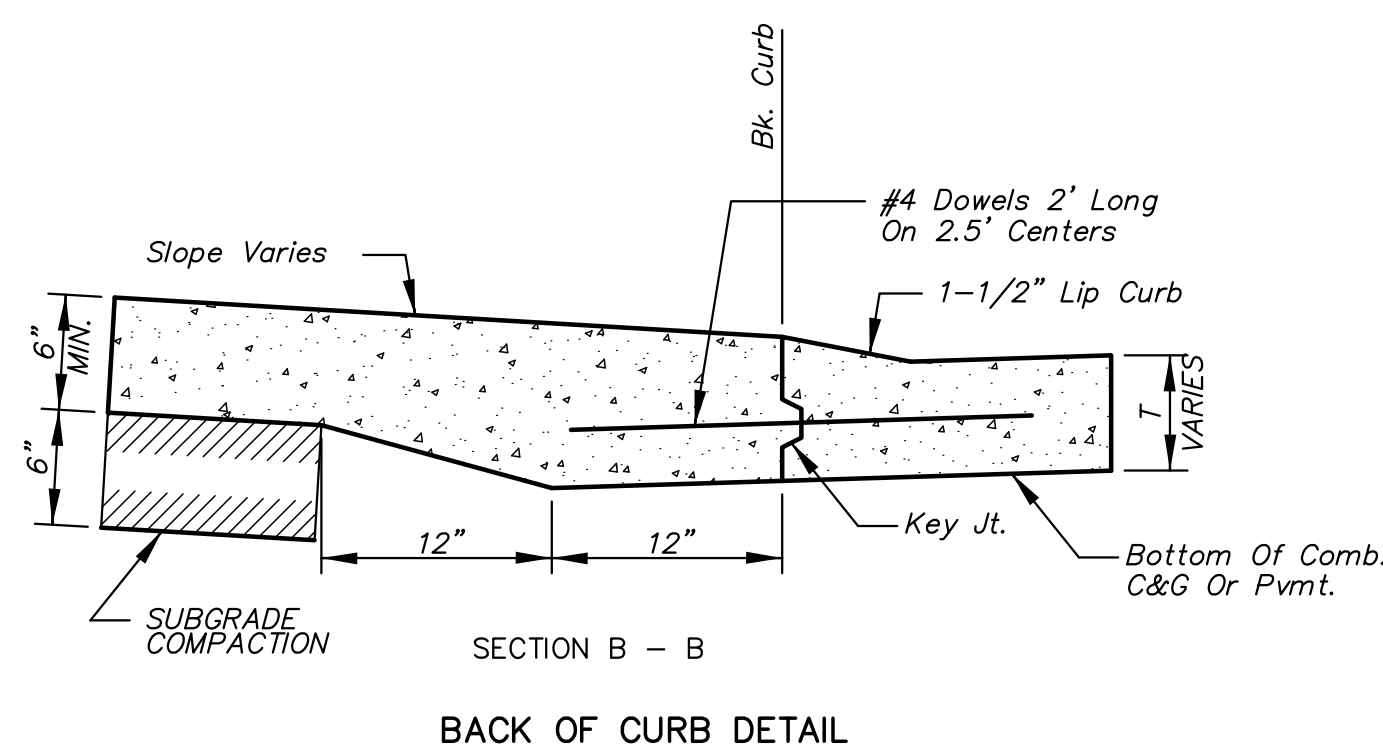
CONCRETE CURB, MONO EDGE (SPECIAL)
(PERPENDICULAR WITH TRAVELED WAY)



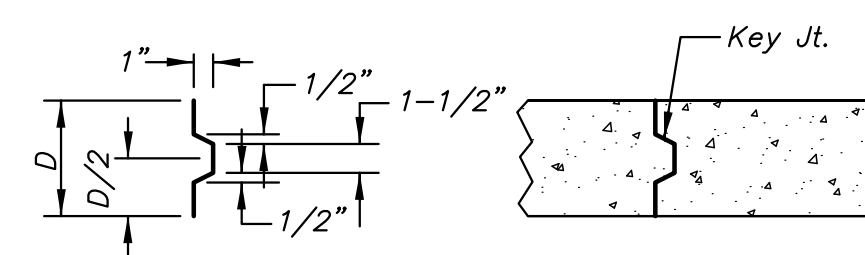
CONCRETE CURB, MONO EDGE (SPECIAL)
(PERPENDICULAR WITH TRAVELED WAY)



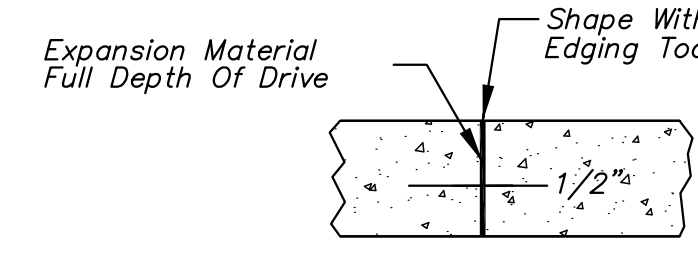
CONCRETE CURB, MONO EDGE (SPECIAL),
(PARALLEL WITH TRAVELED WAY)



SECTION B - B
BACK OF CURB DETAIL



ALT. LONGITUDINAL CONSTRUCTION JOINT



EXPANSION JOINT (E.J.)

GENERAL NOTES

- Expansion (isolation) joints shall be constructed a maximum of 300' apart and at all PIs, PCs, cul-de-sac quadrants, and ends of returns.
- Contraction joints shall be constructed a minimum of 12' apart.
- Joint sealer shall be required at all joints on arterial and industrial streets and at intersections on residential streets.
- No distinction between parallel and perpendicular Special mono edge curb will be made with regard to payment.



CURB & GUTTER DETAILS		
CITY ENGINEER GARY L. JANZEN, P.E.		
PROJECT NUMBER 472-84303	OCA NUMBER 707048	DATE 06/2012
CITY ENGINEER'S OFFICE CITY HALL - SEVENTH FLOOR 455 NORTH MAIN STREET WICHITA, KANSAS 67202-1620 (316) 268-4501		DESIGN DRAWN SHEET 63 of 191