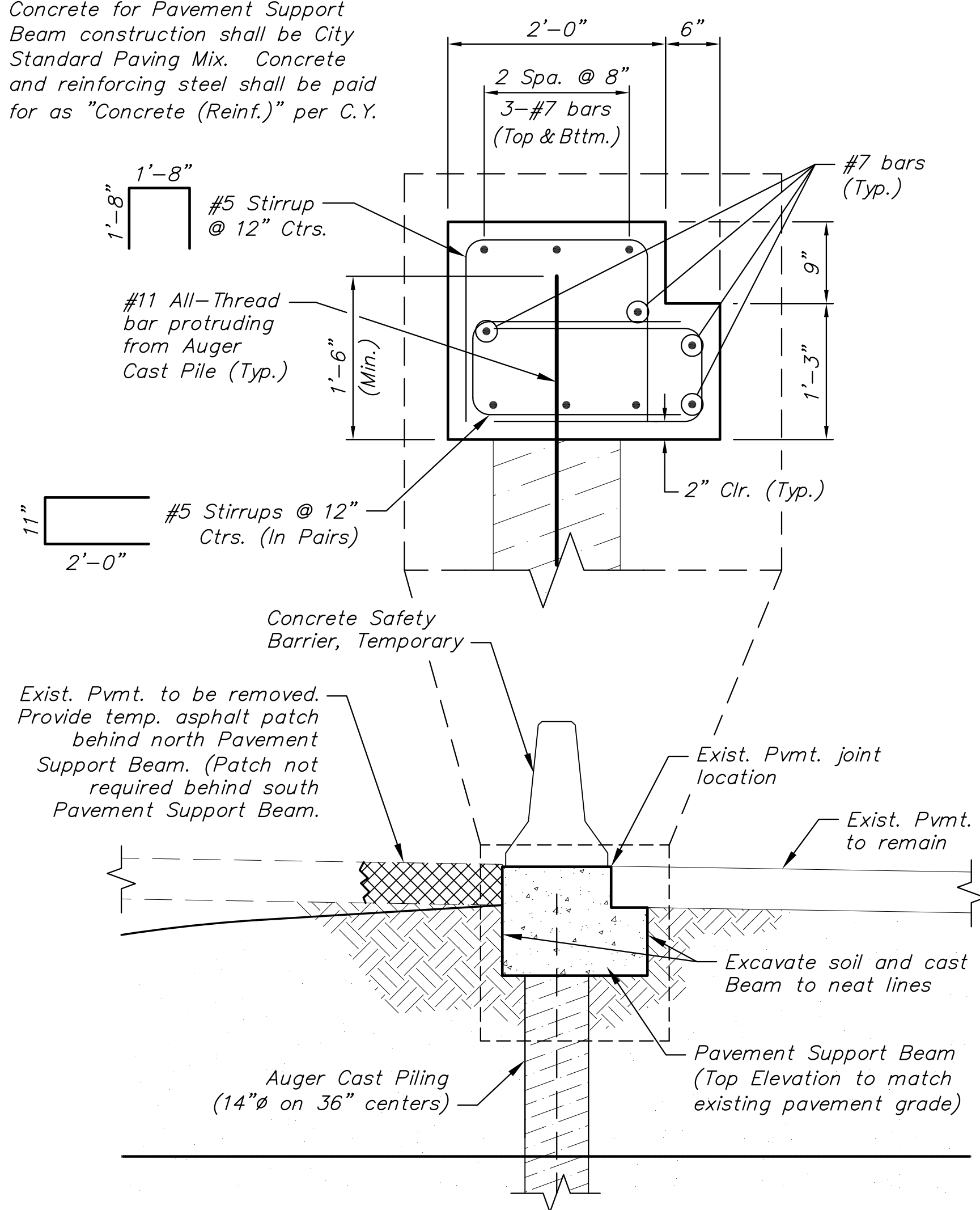


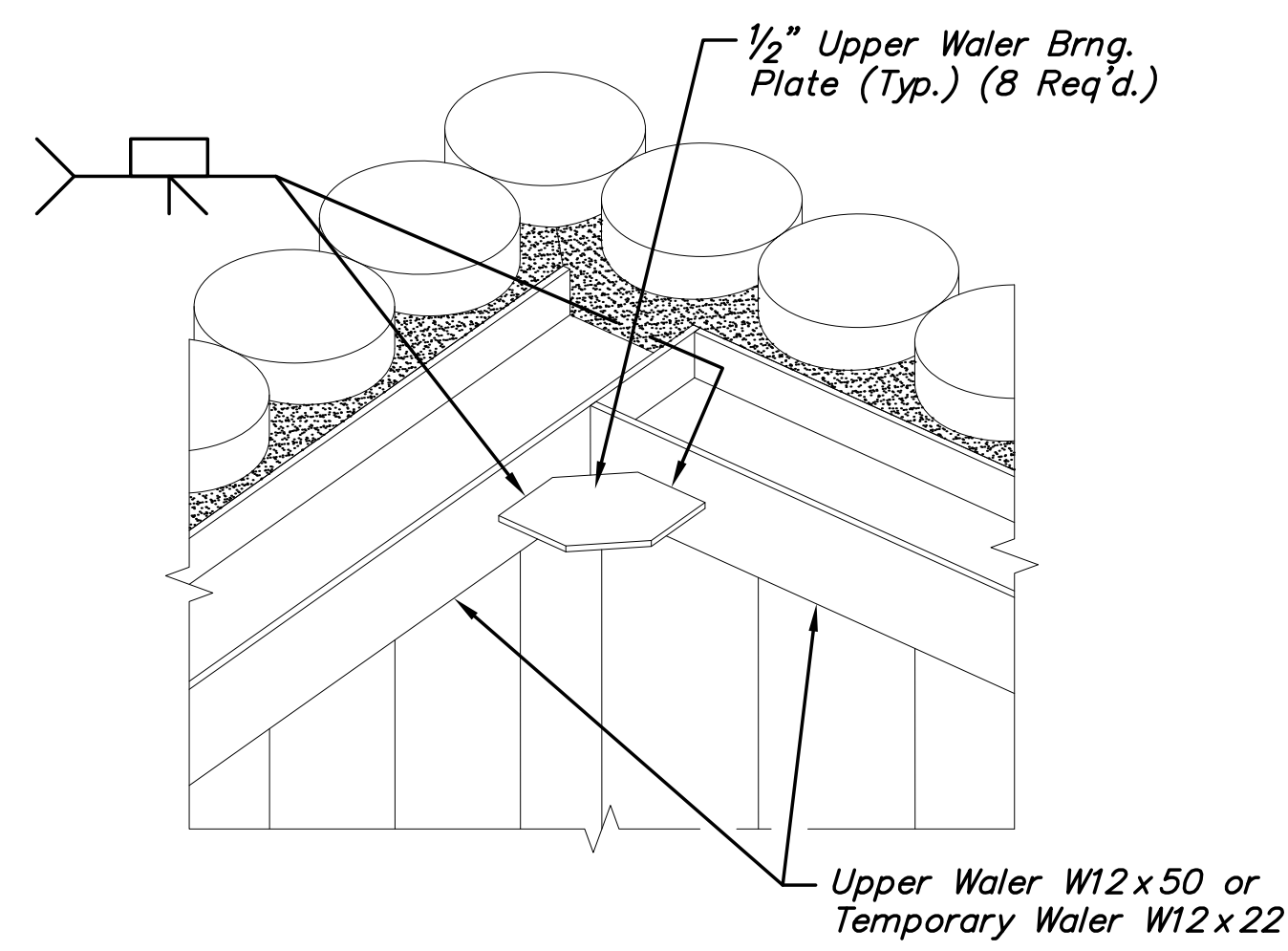
STATE	PROJECT NO.	YEAR	SHEET NO.	TOTAL SHEETS
KANSAS	87 N-0597-01	2016	88	191



NOTE:
Concrete for Pavement Support Beam construction shall be City Standard Paving Mix. Concrete and reinforcing steel shall be paid for as "Concrete (Reinf.)" per C.Y.

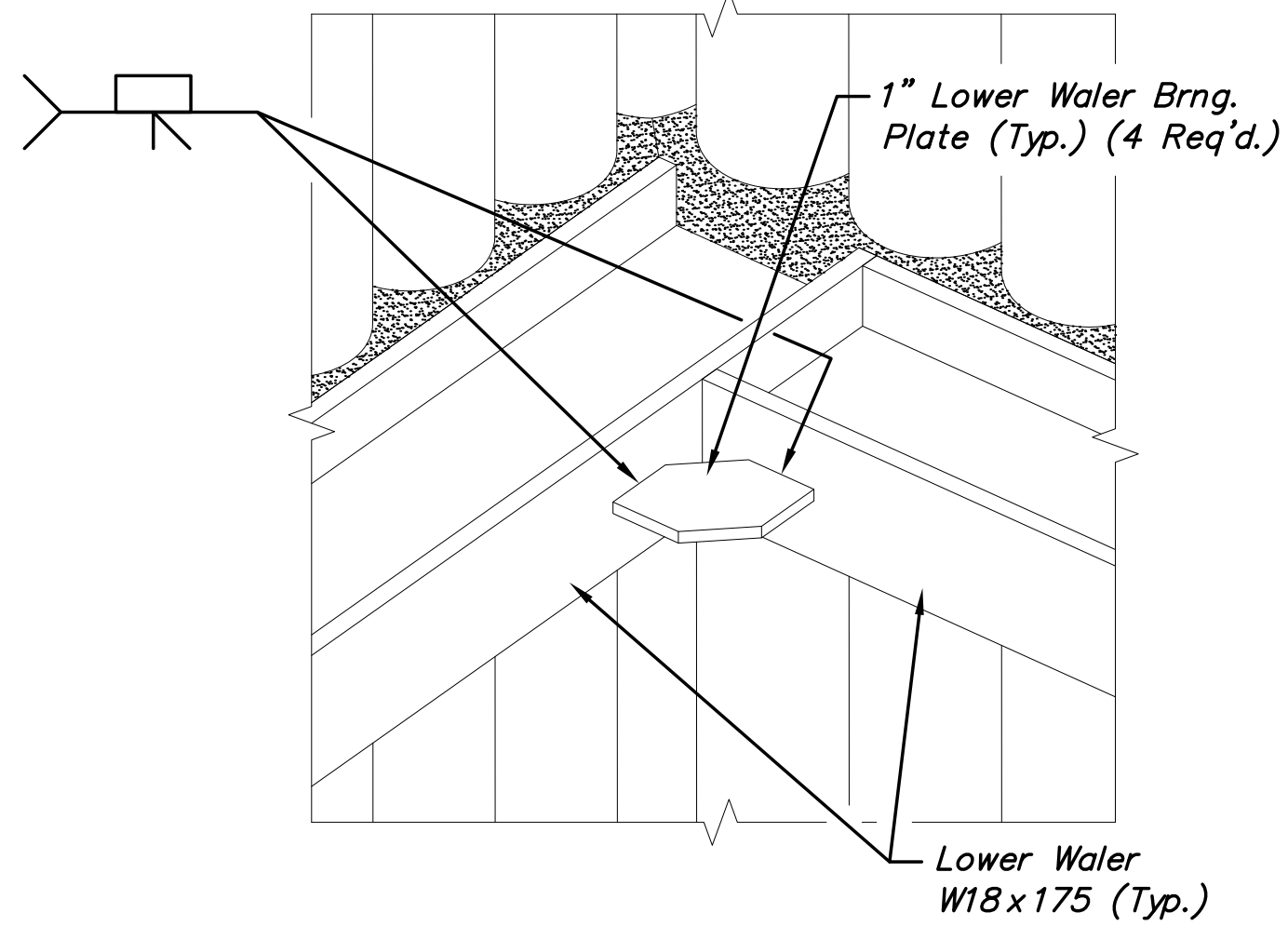


1 PAVEMENT SUPPORT BEAM SECTION
(Perpendicular to Pawnee Ave.) (Not to Scale)

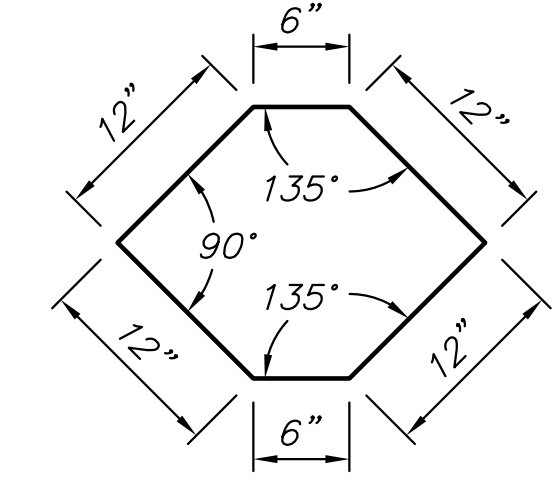


1 UPPER WALER & TEMPORARY WALER BEARING PLATE DETAIL
(Typical Isometric) (8 Locations) (Upper Waler shown)

WELDING NOTE:
All welds shall be in accordance with American Welding Society (AWS) Standards.



1 LOWER WALER BEARING PLATE DETAIL
(Typical Isometric) (4 Locations)



1 WALER BEARING PLATES
(Typical Plan Dimensions) (See Waler Bearing Plate Details for Plate thicknesses)

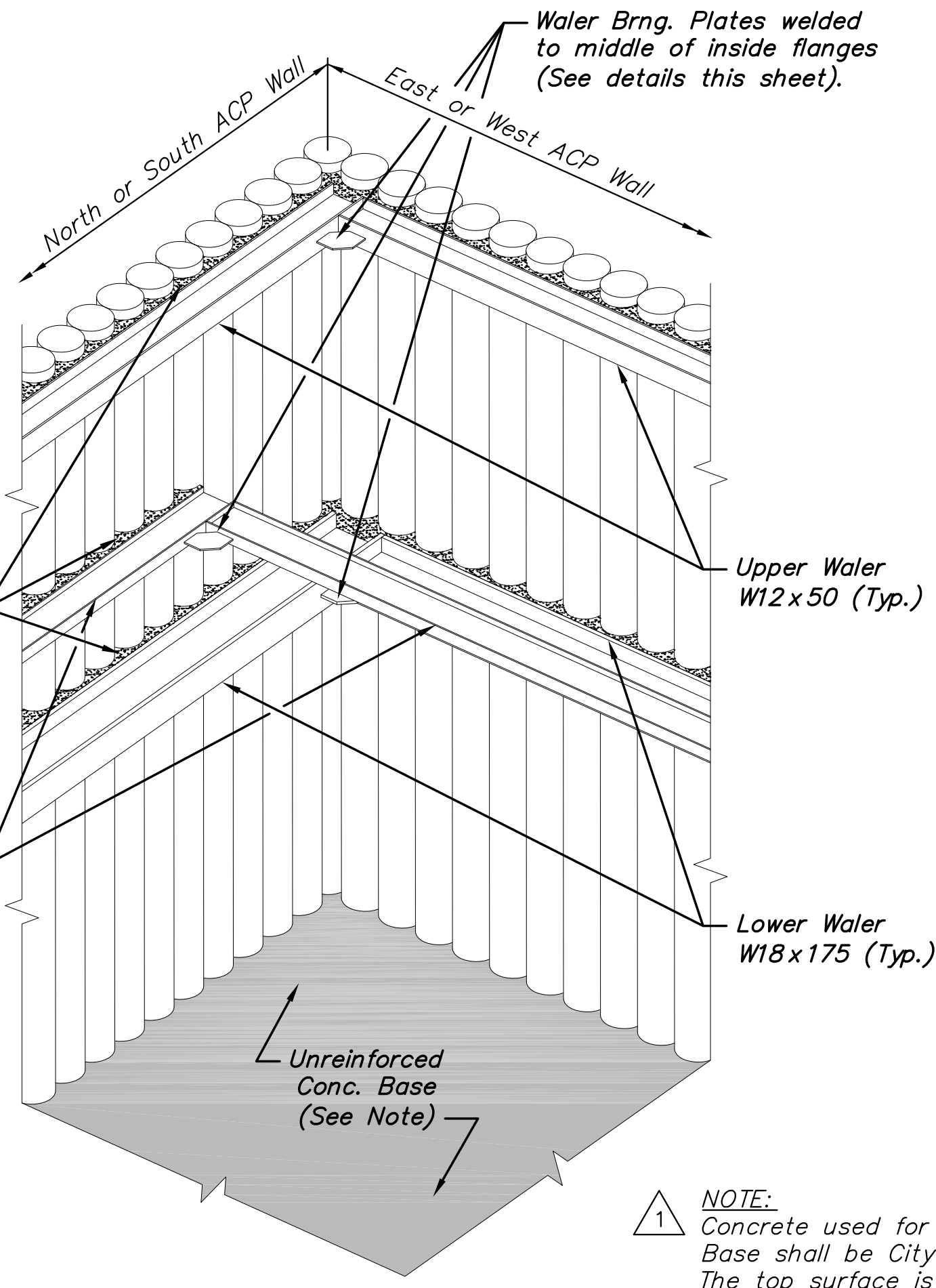
1 GENERAL NOTES

STRUCTURAL STEEL:
All W-Beams, plates and shapes specified for construction of the Waler System shall be paid for as "Structural Steel (Merchant Quality)".

DRY PACK GROUT:
Expansive Dry Pack Grout shall be "W.R. Meadows SealTight PAC-1T" or approved equal. Prepare and apply per manufacturer's recommendations. This shall be subsidiary to "Structural Steel (Merchant Quality)".

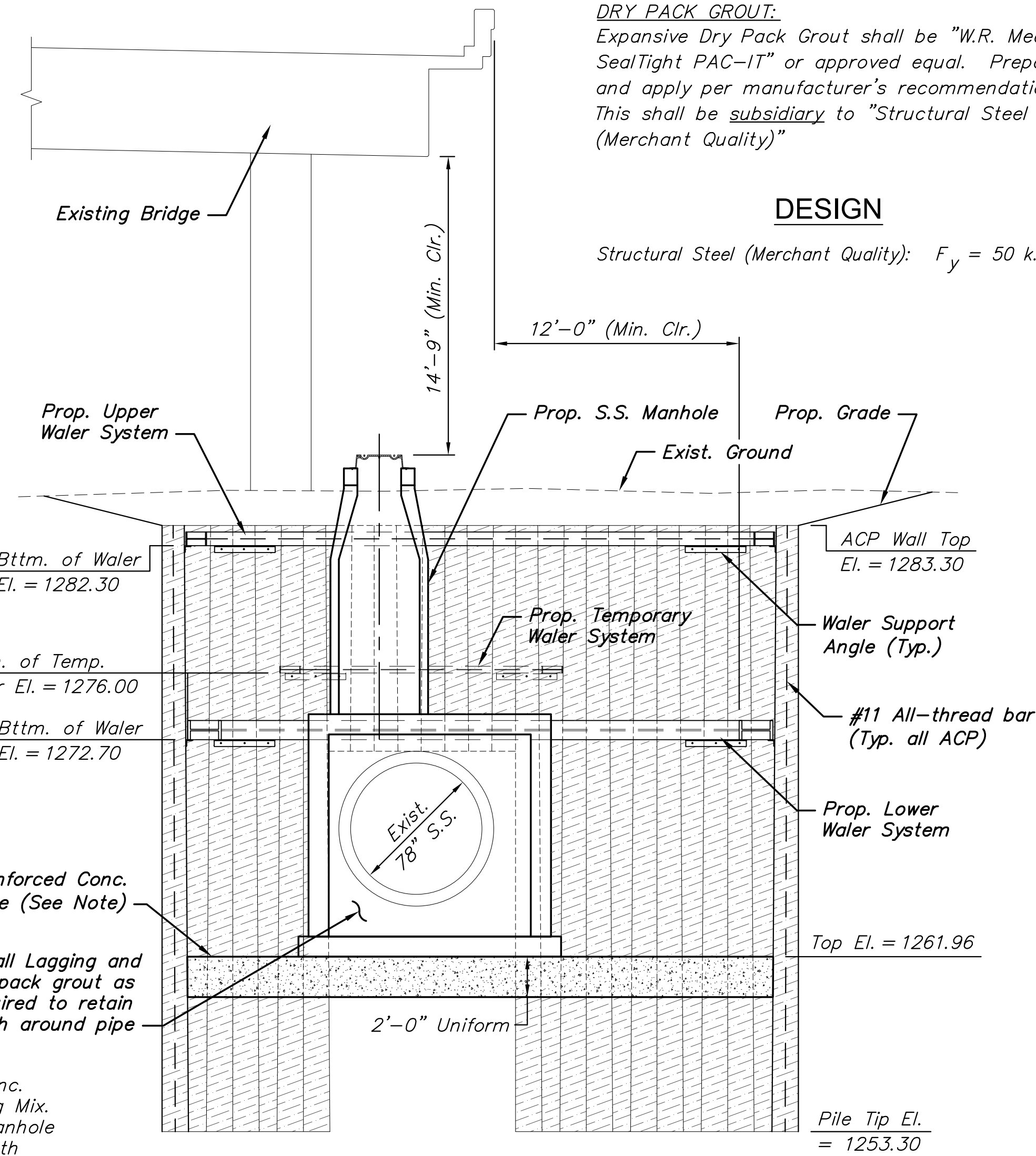
DESIGN

Structural Steel (Merchant Quality): $F_y = 50$ k.s.i.

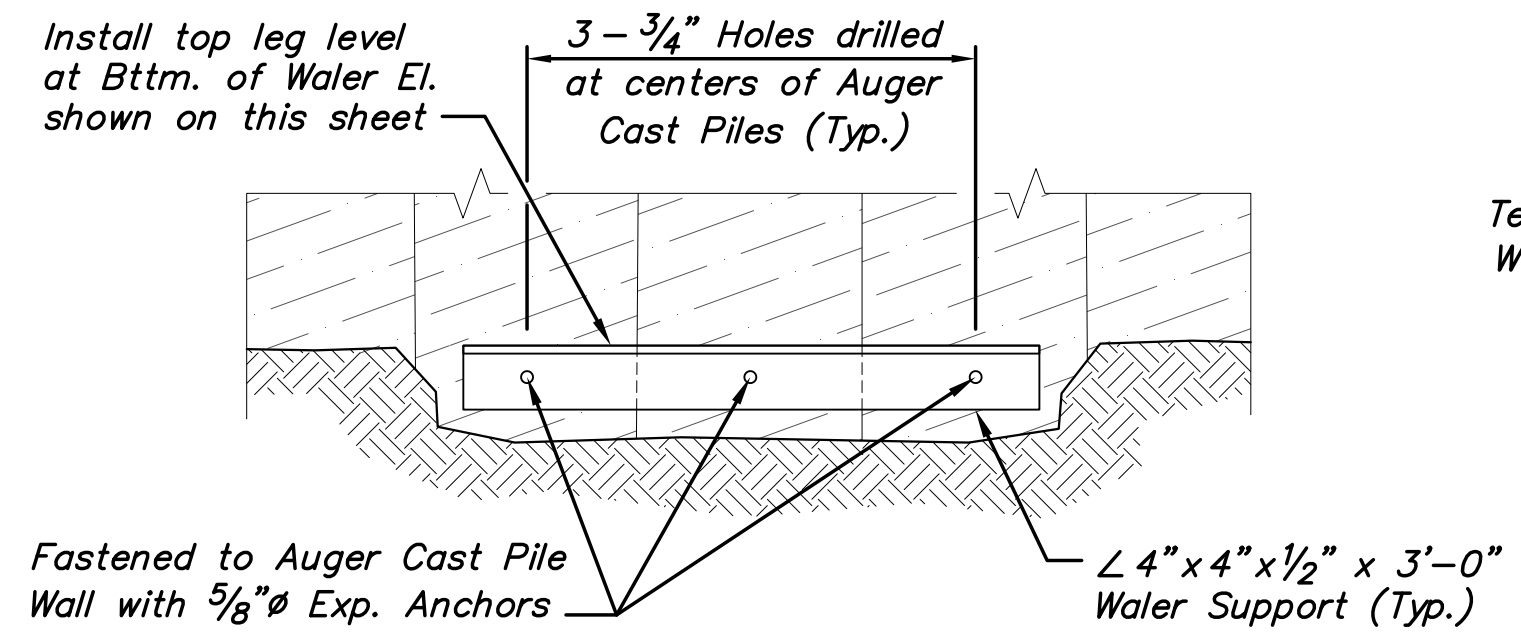


1 MANHOLE PIT DETAIL
(Isometric View of NE & SW Corners)

NOTE:
Concrete used for Unreinforced Conc. Base shall be City Standard Paving Mix. The top surface is intended for manhole support and shall be floated smooth and level. The surface tolerance shall be no greater than 1/16" in 10'. This item, as well as any equipment, labor, and materials required for its installation shall be paid for as "Concrete" per C.Y.



1 MANHOLE PIT ELEVATION
(Perpendicular to 78" S.S., Looking South) (Not to Scale)



1 WALER SUPPORT ANGLE DETAIL
(Elevation View near inside face of ACP Wall)
(2 Req'd on each side of Waler bearing against ACP Wall)
(20 Total Req'd.)

NOTE:
Expansion Anchors shall be HILTI KWIK Bolt TZ (Carbon Steel), or approved equal. 3/8" Min. Embed.

STREET IMPROVEMENTS FOR:
PAWNEE AVENUE
FROM HYDRAULIC TO POPLAR
WICHITA, KANSAS

©2013 MKEC Engineering All Rights Reserved
These drawings and their contents, including, but not limited to, all concepts, designs, & ideas are the exclusive property of MKEC Engineering (MKEC), and may not be used or reproduced in any way without the express consent of MKEC.

SANITARY SEWER MH DETAILS
STA. 28+80.45

PROJECT NO.	87 N-0597-01	
DATE	5/10/2016	
SCALE	NONE	
DESIGNED	DRAWN	CHECKED
JRA	DMU	JRA

1	REVISED SHEET	06/16/16
NO.	REVISION	DATE

SHEET NO. 88 OF 191