

STATE	PROJECT NO.	YEAR	SHEET NO.	TOTAL SHEETS
KANSAS	87 N-0597-01	2016	96	191



STREET IMPROVEMENTS FOR:
PAWNEE AVENUE
FROM HYDRAULIC TO POPLAR
WICHITA, KANSAS

©2013
MKEC Engineering
All Rights Reserved
www.mkec.com
These drawings and their contents, including, but not limited to, all concepts, designs, & ideas are the exclusive property of MKEC Engineering (MKEC), and may not be used or reproduced in any way without the express consent of MKEC.

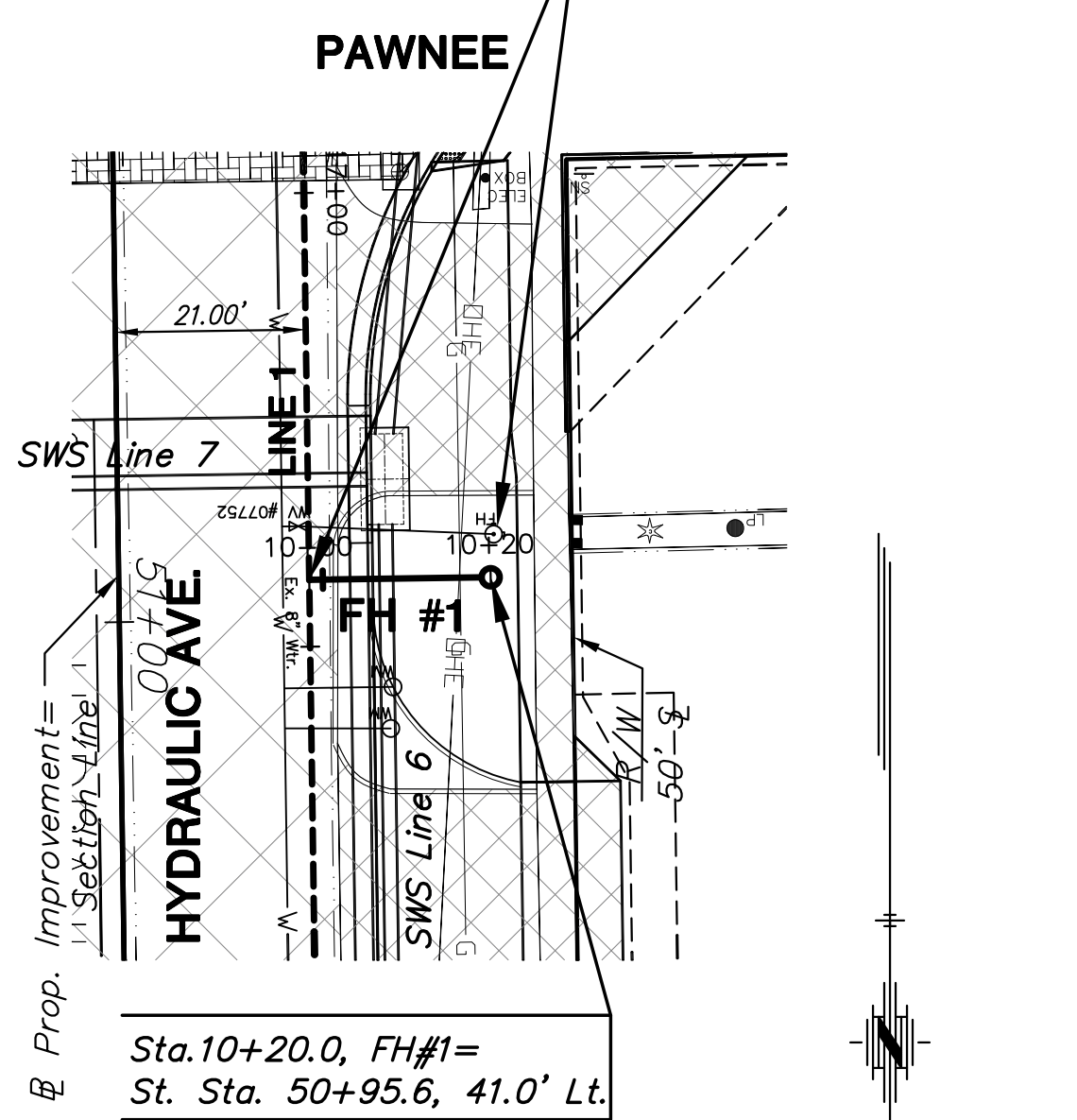
**FH #1, FH #2,
FH #3, AND FH #4**

PROJECT NO.	87 N-0597-01
DATE	5/10/2016
SCALE	1"=20'
DESIGNED	JRA
DRAWN	JSB
CHECKED	JRA

NO.	REVISION	DATE

SHEET NO.
96 OF 191

Sta. 10+00.0, FH#1=
St. Sta. 17+42.63, Line 1=
St. Sta. 50+95.6, 21.0' Lt.
Remove Ex. Fire Hydt. & Branch. Plug Ex. Valve on Ex. 6"x8" Tee



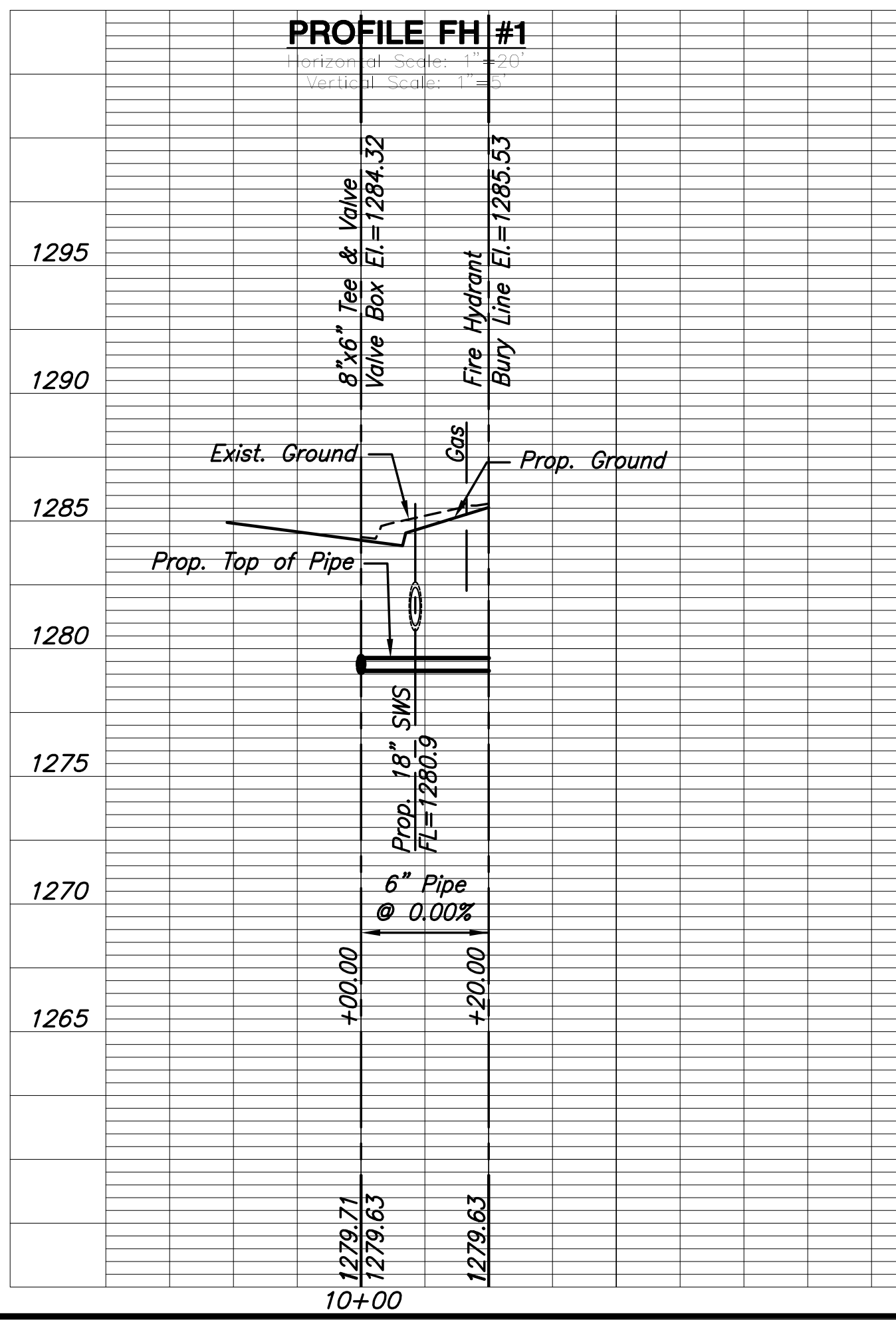
Sta. 10+20.0, FH#1=
St. Sta. 50+95.6, 41.0' Lt.



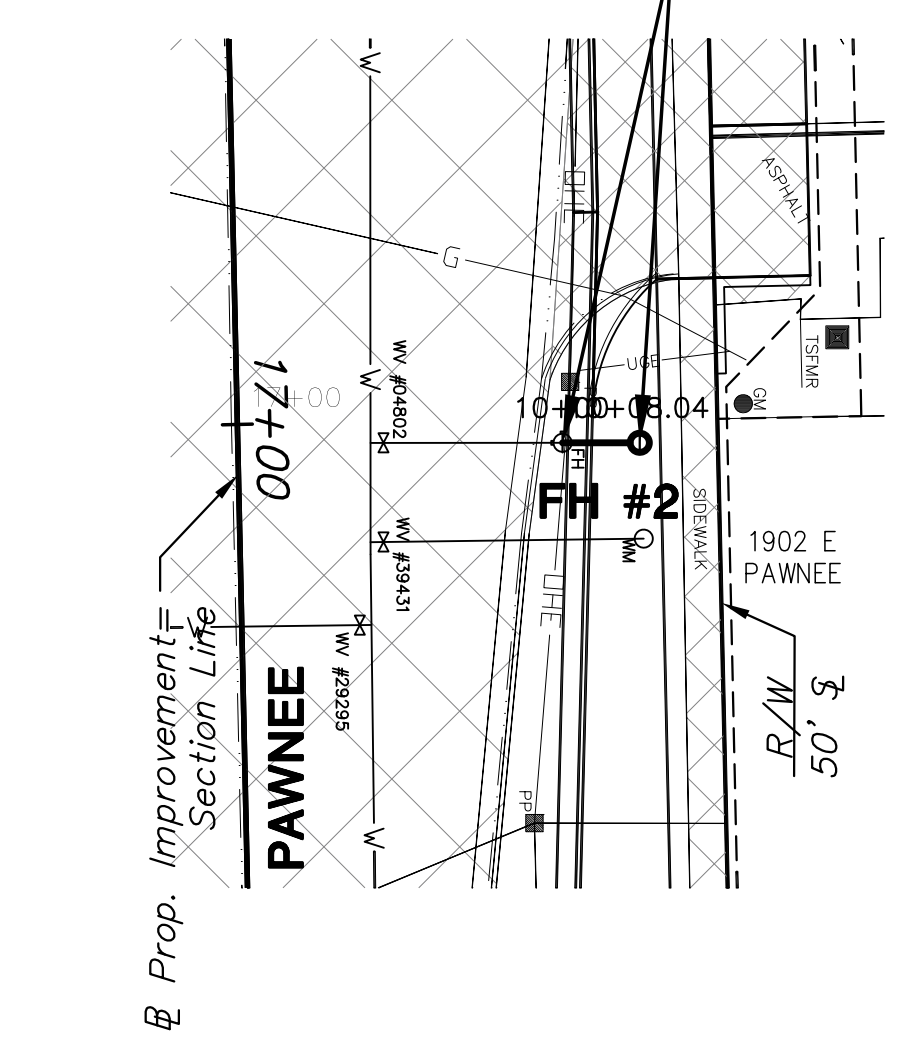
PLAN FH #1

PROFILE FH #1

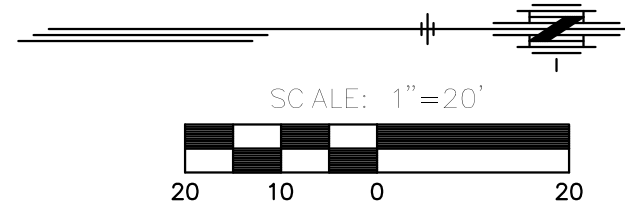
Horizontal Scale: 1"=20'
Vertical Scale: 1"=5'



Sta. 10+00.0, FH#2=
St. Sta. 17+02.2, 33.8' Lt.
To
Sta. 10+08.0, FH#2=
St. Sta. 17+02.2, 41.9' Lt.
Relocate Fire Hydt. By Installing 8.0' Of 6" DICL Pipe



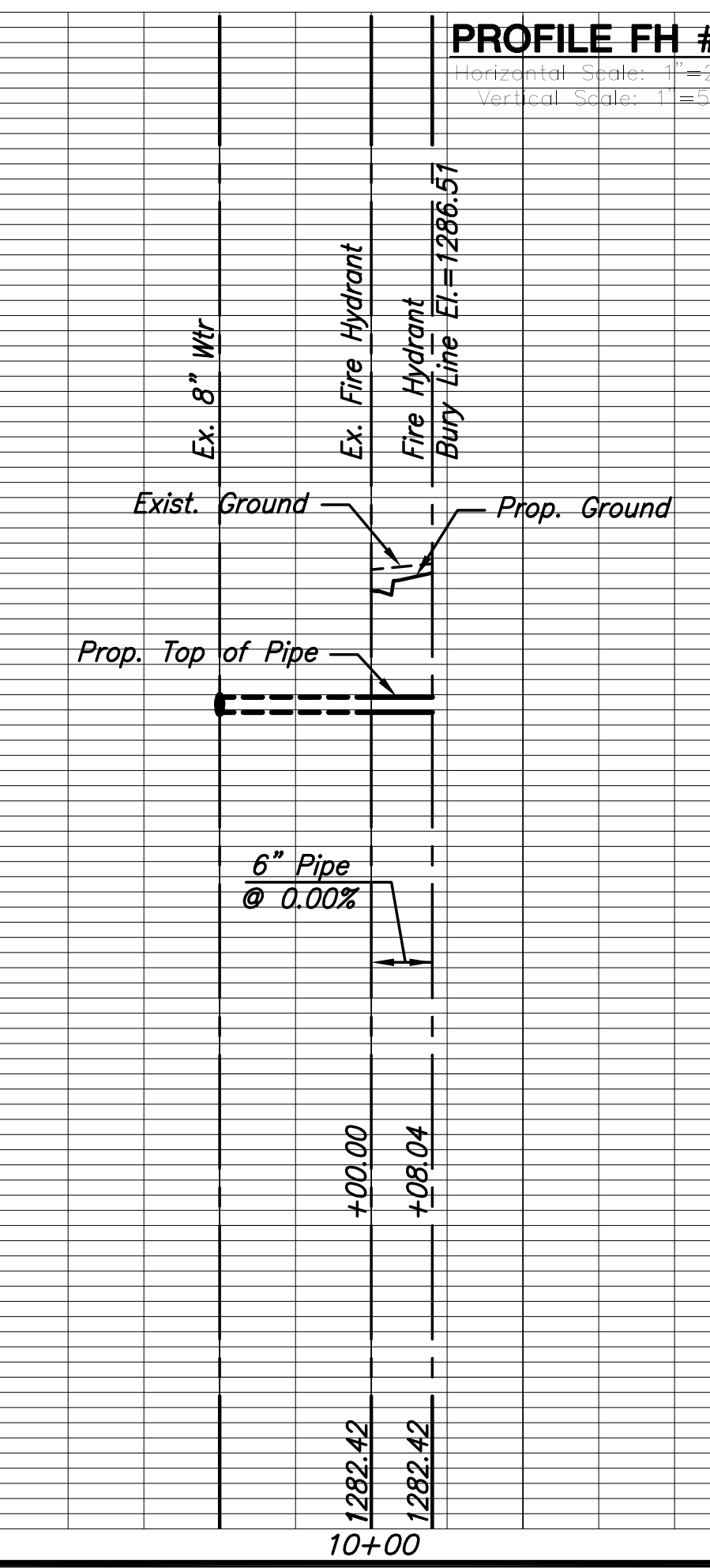
Prop. Improvement= Section Line



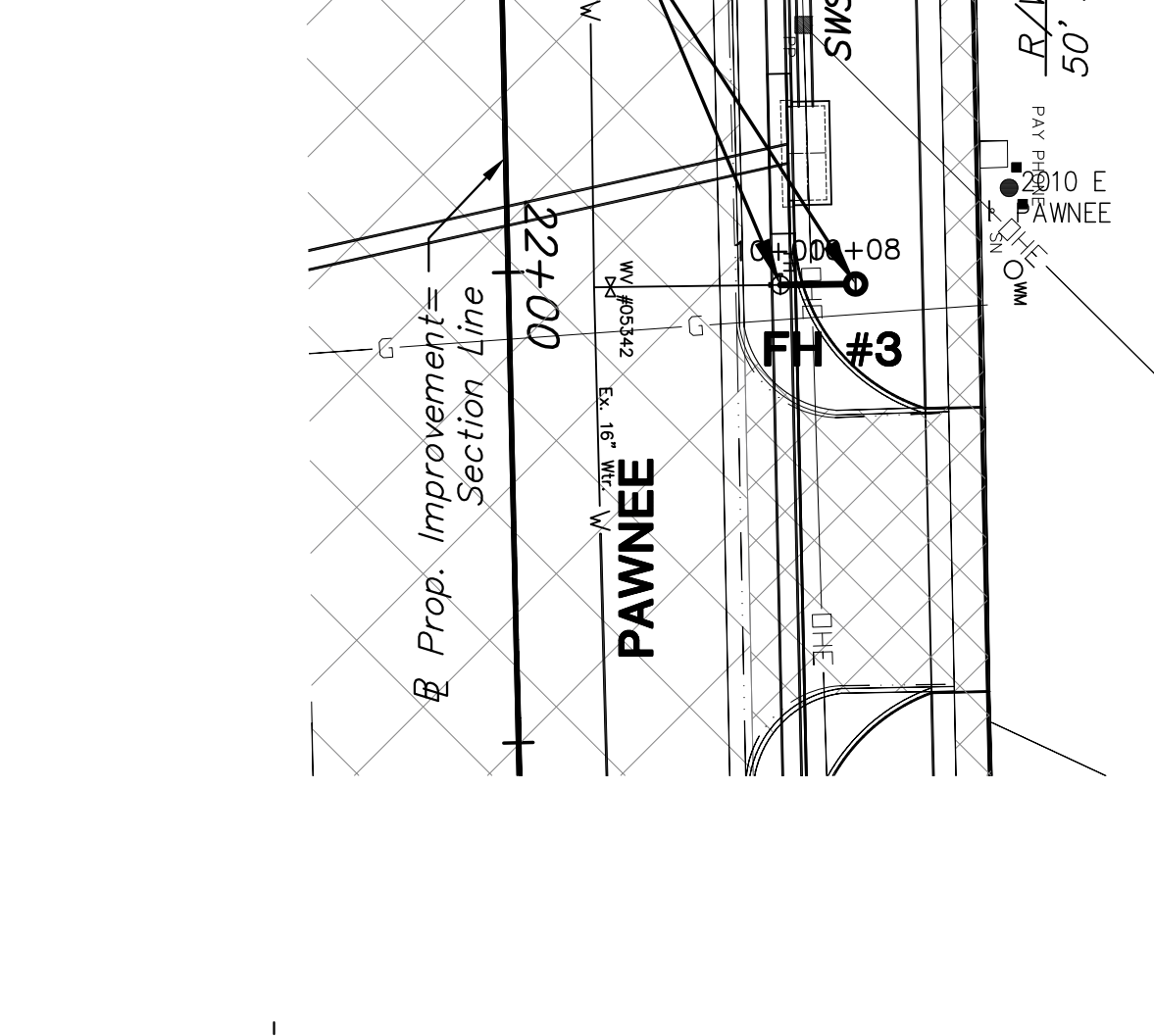
PLAN FH #2

PROFILE FH #2

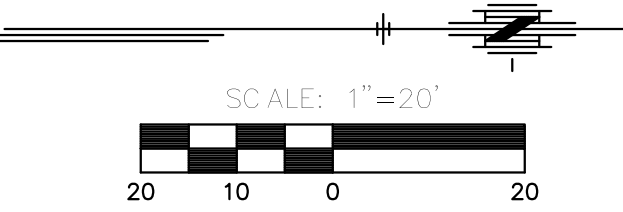
Horizontal Scale: 1"=20'
Vertical Scale: 1"=5'



Sta. 10+00.0, FH#3=
St. Sta. 22+02.0, 28.9' Lt.
To
Sta. 10+08.0, FH#3=
St. Sta. 22+02.0, 36.9' Lt.
Relocate Fire Hydt. By Installing 8.00' Of 6" DICL Pipe



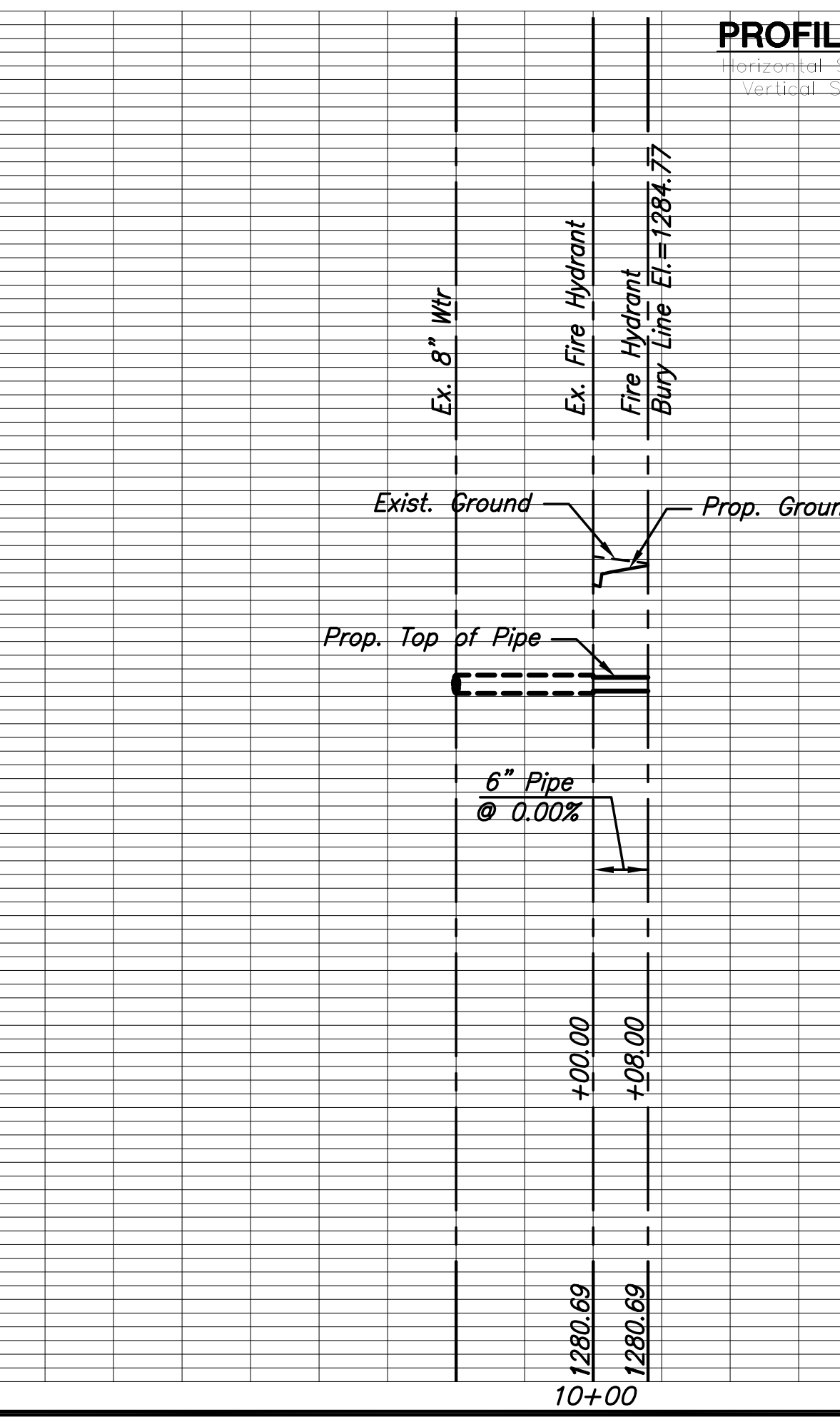
Prop. Improvement= Section Line



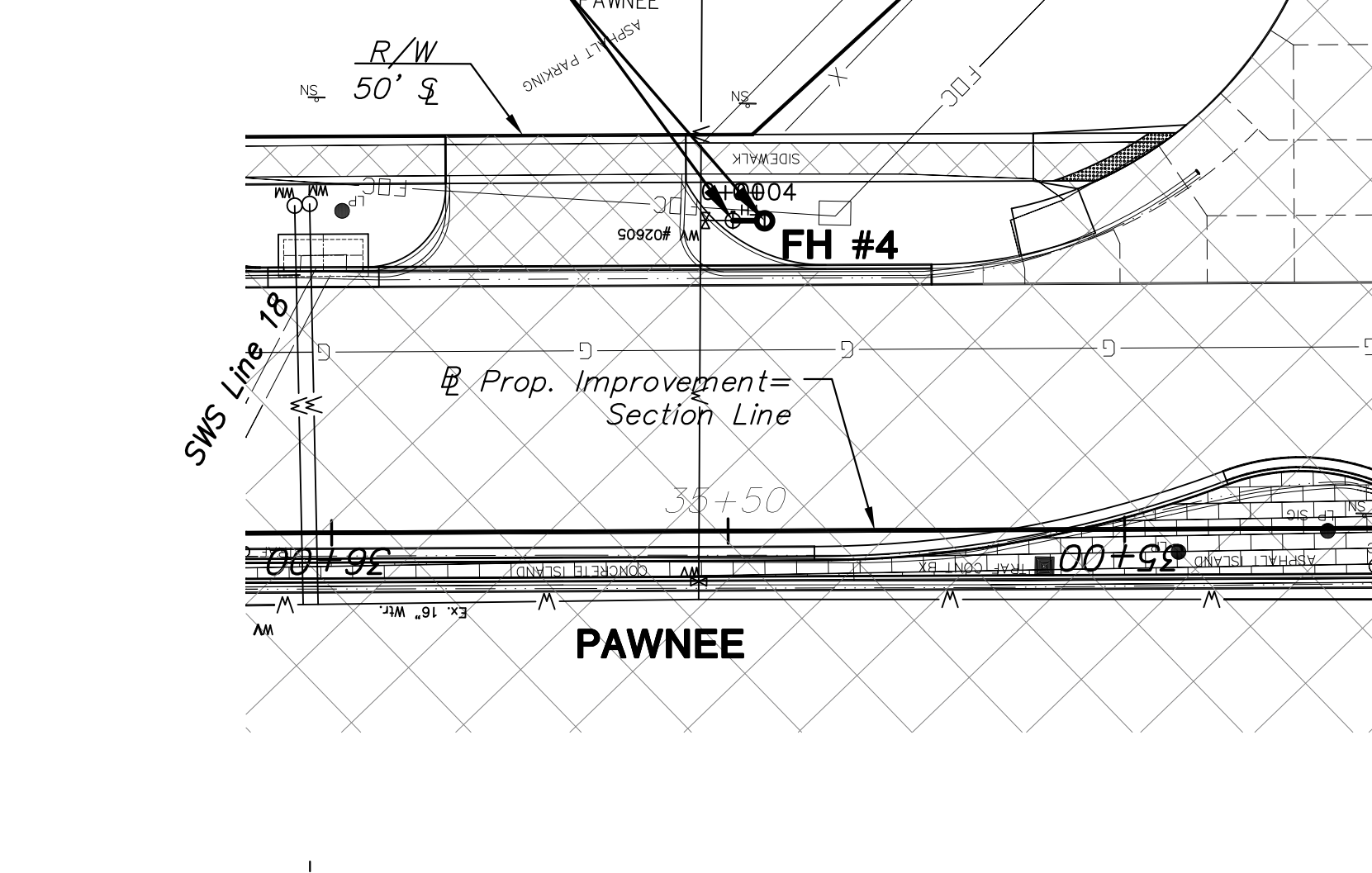
PLAN FH #3

PROFILE FH #3

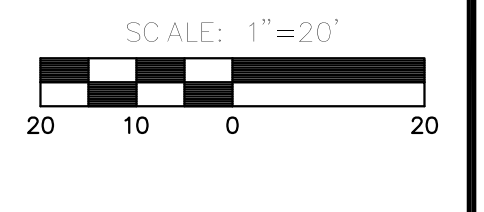
Horizontal Scale: 1"=20'
Vertical Scale: 1"=5'



Sta. 10+00.0, FH#4=
St. Sta. 35+49.2, 39' Rt.
To
Sta. 10+04.0, FH#4=
St. Sta. 35+45.2, 39' Rt.
Relocate Fire Hydt. By Installing 4.00' Of 6" DICL Pipe



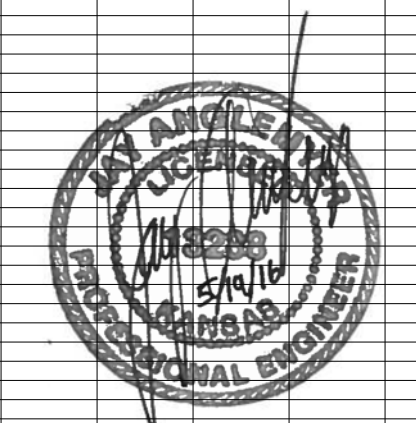
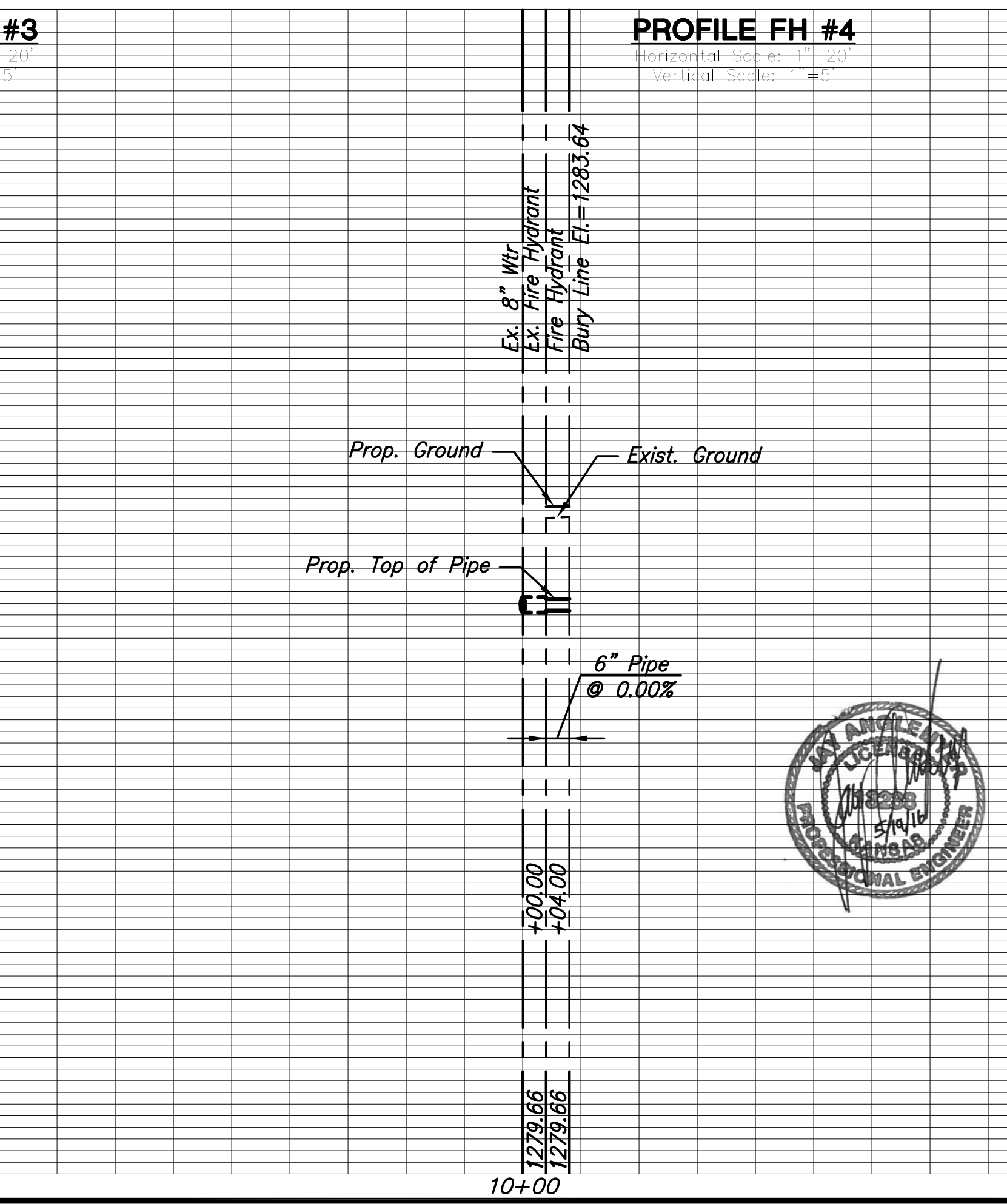
Prop. Improvement= Section Line



PLAN FH #4

PROFILE FH #4

Horizontal Scale: 1"=20'
Vertical Scale: 1"=5'



PLOTTED: Wednesday, June 22, 2016 @ 10:07 AM
J:\CIVIL\05745\DWG\WTR\05745_C06.DWG