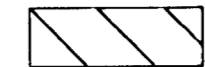
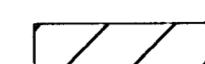


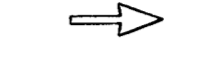
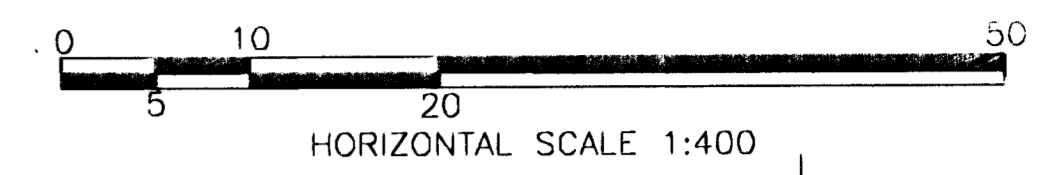


FHWA REG NO.	STATE	PROJECT NO.	YEAR	SHEET NO.	TOTAL SHEETS
7	KANSAS	87 N-0198-01	2001	64	82

FED. AID NO. - CMQ-N019(801)

Legend

- Phase 1-A CONSTRUCTION ZONES 
- Phase 1-A EAST BOUND K-96 OFF RAMP TRAFFIC SIGNAL RELOCATION 
- TYPE III BARRICADE 
- CHANNELIZING DEVICE (DRUM) 
- TRAFFIC FLOW ARROWS (NOT PAVEMENT MARKING) 



NOTES:

1. REFER TO KDOT STANDARDS & PARTIAL EXIT RAMP CLOSURE DETAIL THIS SHEET FOR IDENTIFICATION OF SIGNS FOR HANDLING TRAFFIC THROUGH CONSTRUCTION. REFER TO KDOT STANDARDS FOR DIMENSIONS.
2. SOUTH BOUND ROCK ROAD MAY BE FULLY CLOSED FOR TRAFFIC SIGNAL RELOCATION FOR UP TO 5 HOURS DURING NIGHT TIME ONLY (FROM 1:00 AM TO 6:00 AM).
3. 32nd STREET WEST IS TO REMAIN OPEN TO A MINIMUM OF ONE LANE FOR ACCESS.
4. THE CONTRACTOR SHALL PROVIDE ACCESS TO ADJACENT PROPERTIES THAT ACCESS ROCK ROAD STREET DIRECTLY.

SEE TE700SI, RAMP CLOSURE DETAILS THIS SHEET & SHEET NO. 66 FOR TRAFFIC CONTROL

SEE TE700SI & SHEET NO. 66 FOR TRAFFIC CONTROL

K-96 EB Off-Ramp

K-96 EB Off-Ramp
STA 49+958

K-96 WB On-Ramp

K-96 WB Off-Ramp

STA 3+040 TO 3+550, LT.
REMOVE EXISTING BROKEN WHITE LINES
KEEP EXISTING CENTERLANE MARKINGS

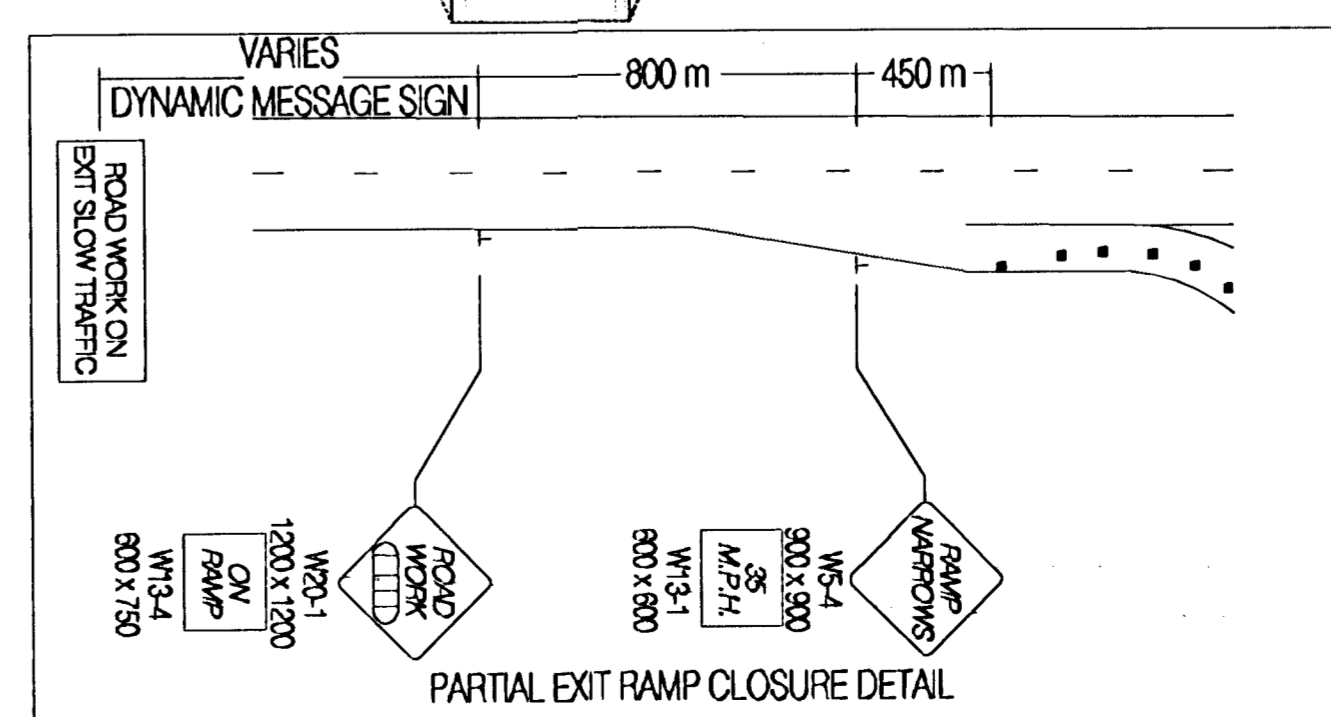
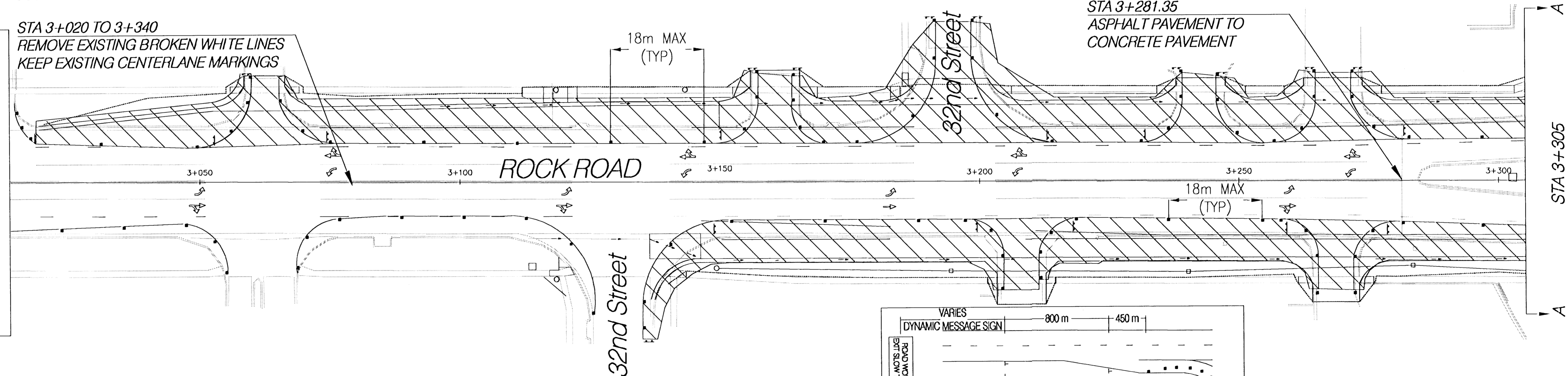
STA 3+340 TO 3+540, RT.
KEEP EXISTING PAVEMENT MARKINGS

STA 3+470.04
CONCRETE PAVEMENT TO ASPHALT PAVEMENT

STA 3+281.35
ASPHALT PAVEMENT TO CONCRETE PAVEMENT

STA 3+020 TO 3+340
REMOVE EXISTING BROKEN WHITE LINES
KEEP EXISTING CENTERLANE MARKINGS

SEE TE700SI & SHEET NO. 66 FOR TRAFFIC CONTROL



ROCK ROAD TRAFFIC CONTROL PLAN PHASE 1-A

HWS Consulting Group Inc. Manhattan Office
3206 Kimball Avenue
Manhattan, KS 66503
Phone: (785) 539-2202
Fax: (785) 539-2593

Designed By: JJB Checked By: JDM
Drawn By: BJD Date: 11/14/01 Job No. 55-70-2003