

P.O.T. #4 Sta. 8+75.16  
 1. Set P.K. Nail 17.17' S.  
 2. Chis. \*\* on Top of Curb 45.59' N.W.  
 3. Chis. \*\* on Top of Curb 44.82' N.  
 4. Chis. \*\* on Top of Curb

P.O.T. #3 Sta. 12+99.88  
 1. Set P.K. Nail 63.88' S.S.W.  
 2. P.P. 33.54' S.S.W.  
 3. Chis. \*\* on Sidewalk 28.61' N.E.  
 4. Chis. \*\* on Top of Curb

**DRAINAGE DATA**

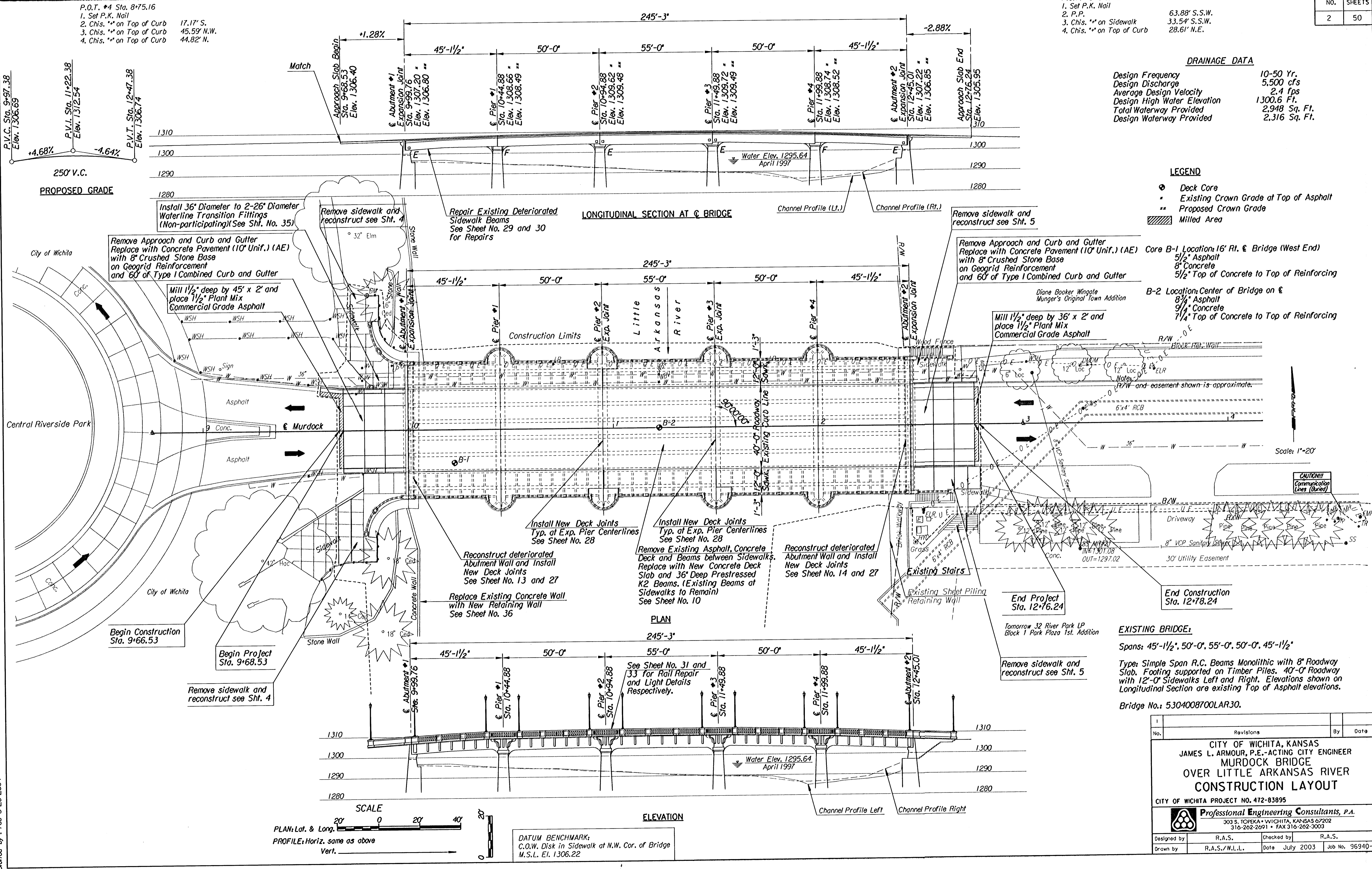
Design Frequency	10-50 Yr.
Design Discharge	5,500 cfs
Average Design Velocity	2.4 fps
Design High Water Elevation	1300.6 Ft.
Total Waterway Provided	2,948 Sq. Ft.
Design Waterway Provided	2,316 Sq. Ft.

**LEGEND**

- ⊙ Deck Core
- Existing Crown Grade at Top of Asphalt
- \*\* Proposed Crown Grade
- ▨ Milled Area

Core B-1 Location: 16' Rt. of Bridge (West End)  
 5/2" Asphalt  
 8" Concrete  
 5/2" Top of Concrete to Top of Reinforcing

Core B-2 Location: Center of Bridge on E  
 8 3/4" Asphalt  
 9 1/4" Concrete  
 7 1/4" Top of Concrete to Top of Reinforcing



usr/usth/agn/1966/96940/002/officecheck/layou/wacabase.dgn  
 drawn by : ras/wil  
 plotted by : ras 3-20-2004

**EXISTING BRIDGE:**  
 Spans: 45'-11/2\", 50'-0\", 55'-0\", 50'-0\", 45'-11/2\"  
 Type: Simple Span R.C. Beams Monolithic with 8\" Roadway Slab. Footing supported on Timber Piles. 40'-0\" Roadway with 12'-0\" Sidewalks Left and Right. Elevations shown on Longitudinal Section are existing Top of Asphalt elevations.  
 Bridge No.: 5304008700LAR30.

No.	Revisions	By	Date

**CITY OF WICHITA, KANSAS**  
 JAMES L. ARMOUR, P.E., ACTING CITY ENGINEER  
**MURDOCK BRIDGE**  
**OVER LITTLE ARKANSAS RIVER**  
**CONSTRUCTION LAYOUT**  
 CITY OF WICHITA PROJECT NO. 472-83895

**Professional Engineering Consultants, P.A.**  
 303 S. TOPEKA • WICHITA, KANSAS 67202  
 316-262-2691 • FAX 316-262-3003

Designed by	R.A.S.	Checked by	R.A.S.
Drawn by	R.A.S./W.L.L.	Date	July 2003
		Job No.	96940-2

DATUM BENCHMARK:  
 C.O.W. Disk in Sidewalk at N.W. Cor. of Bridge  
 M.S.L. El. 1306.22