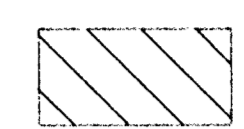
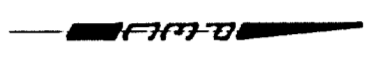
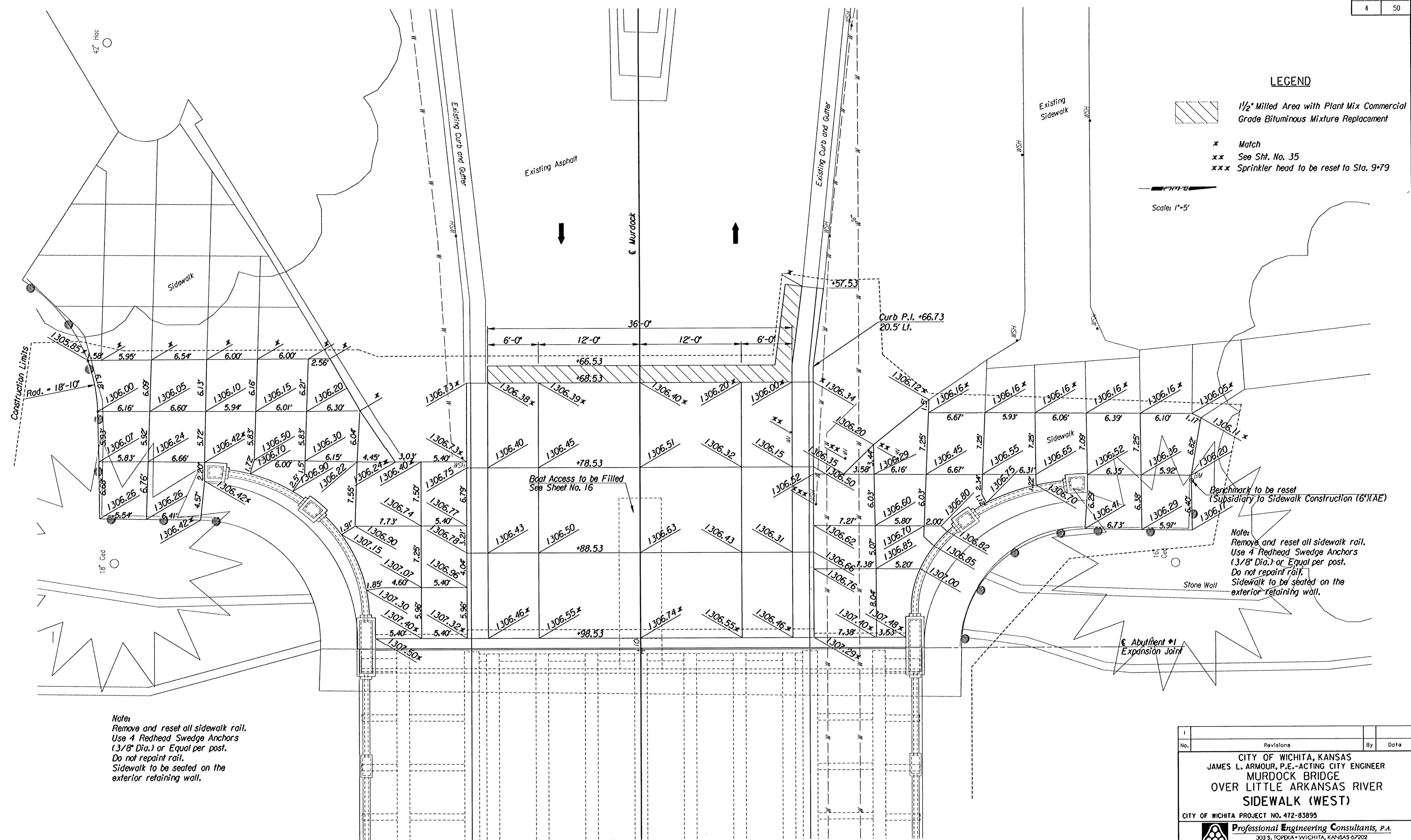


LEGEND

 1/2" Milled Area with Plant Mix Commercial Grade Bituminous Mixture Replacement

- * Match
- ** See Sht. No. 35
- *** Sprinkler head to be reset to Sta. 9+79

 Scale: 1"=5'



Construction Limits
Rad. = 18'-10"

Note:
Remove and reset all sidewalk rail.
Use 4 Redhead Swedge Anchors
(3/8" Dia.) or Equal per post.
Do not repaint rail.
Sidewalk to be seated on the
exterior retaining wall.

Benchmark to be reset
(Subsidiary to Sidewalk Construction (6" XAE))

Note:
Remove and reset all sidewalk rail.
Use 4 Redhead Swedge Anchors
(3/8" Dia.) or Equal per post.
Do not repaint rail.
Sidewalk to be seated on the
exterior retaining wall.


PLAN

drawn by : ras/wll
plotted by : ras 3-27-2004
usr/ustm/dgn/1966/96940/002/sidewalkwest.dgn

No.	Revisions	By	Date

CITY OF WICHITA, KANSAS
 JAMES L. ARMOUR, P.E.-ACTING CITY ENGINEER
 MURDOCK BRIDGE
 OVER LITTLE ARKANSAS RIVER
 SIDEWALK (WEST)

CITY OF WICHITA PROJECT NO. 412-83895

 Professional Engineering Consultants, P.A.
 303 S. TOPEKA • WICHITA, KANSAS 67202
 316-262-2691 • FAX 316-262-3003

Designed by	R.A.S.	Checked by	R.A.S.
Drawn by	D.R.P.	Date	Oct. 2003
		Job No.	96940-2