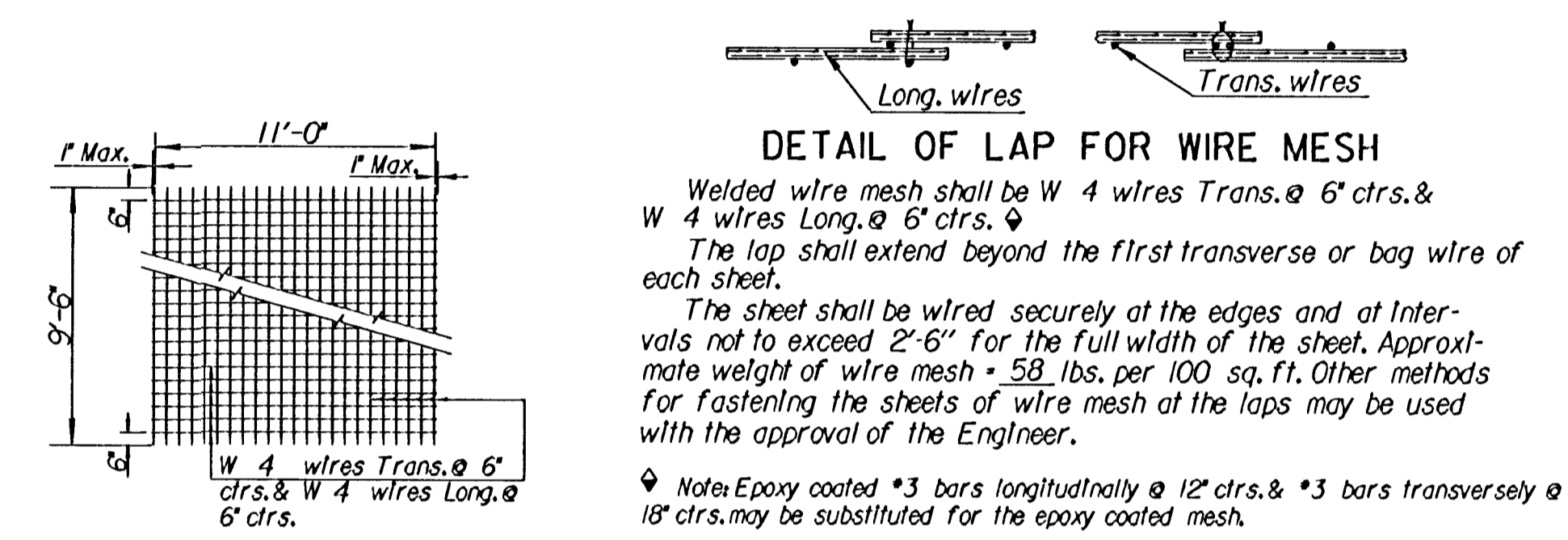
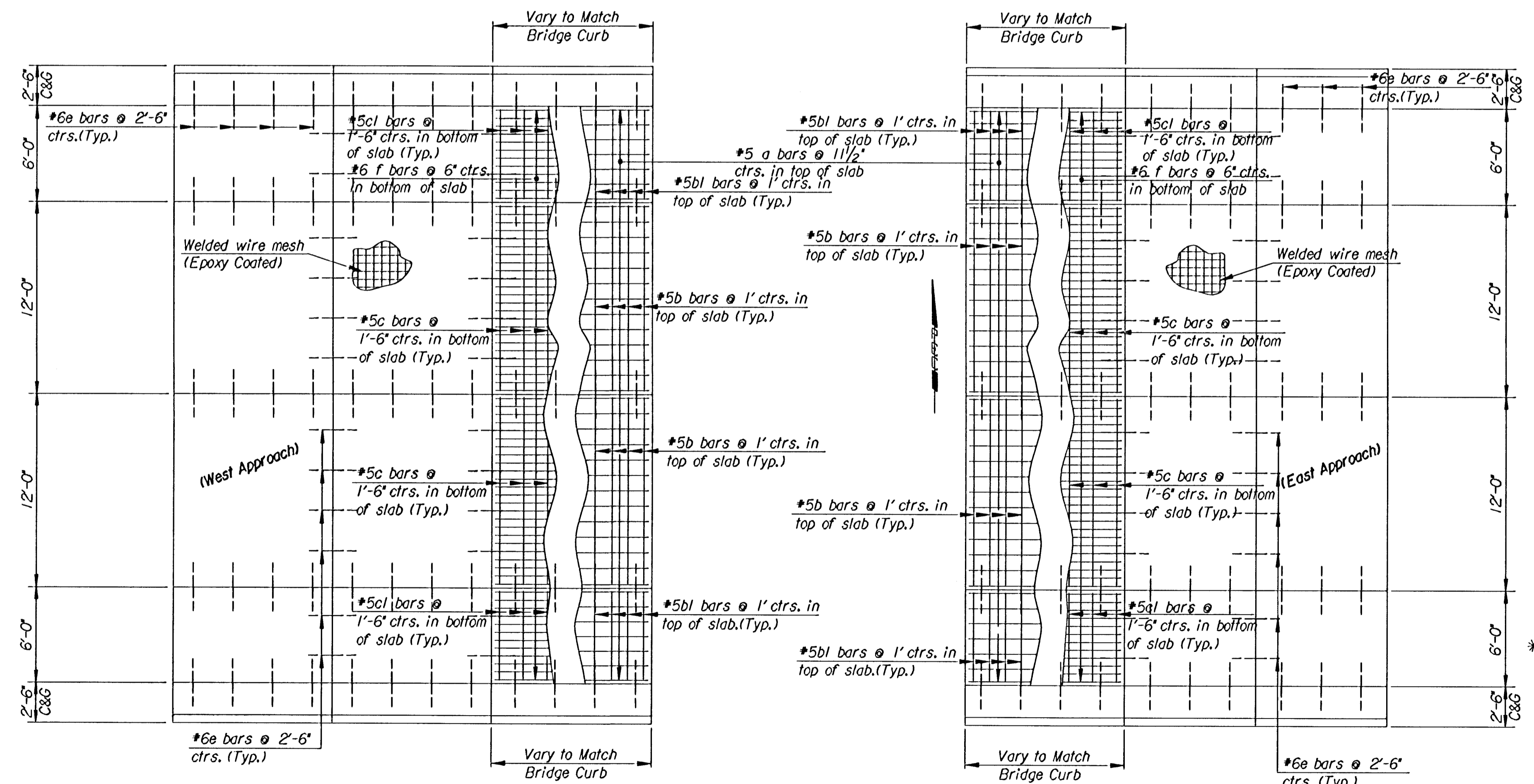


LONGITUDINAL SECTION

GENERAL NOTE
 Special Concrete Bridge Approach shall be paid for as Sq. Yds. of Concrete Pavement (10' Unif.) (A.E.) and includes all work and materials required to construct the approach slab as shown on this sheet.
 At the Contractor's option #4x3'-0" tie bars @ 15' centers may be substituted for the #6 e bars at 2'-6" centers.
 All reinforcing steel shall be epoxy coated.
 Clearance from the face for all reinforcing steel shall be 2 inches.
 Standard reinforcing bar hooks in accordance with the latest ACI specifications shall be used throughout.
 All work shall be done in conformity with the Standard Specifications applicable to the project.
 The cost of all bars and joint material shown on this sheet is to be included in the bid price for Concrete Pavement.
 At each planned transverse joint location, a 4 to 6 inch wide strip of the pavement surface shall be protected from the texturing operation to provide a transverse textureless surface centered over the joint sawcut.
 All joints on this project shall be sawed and filled with sealant in accordance with Standard Specifications.
 All materials and work required for this construction shall be Subsidiary to the concrete approach slab.



TYPICAL SHEET OF WELDED WIRE MESH FOR SPECIAL BRIDGE APPROACH PAVEMENT



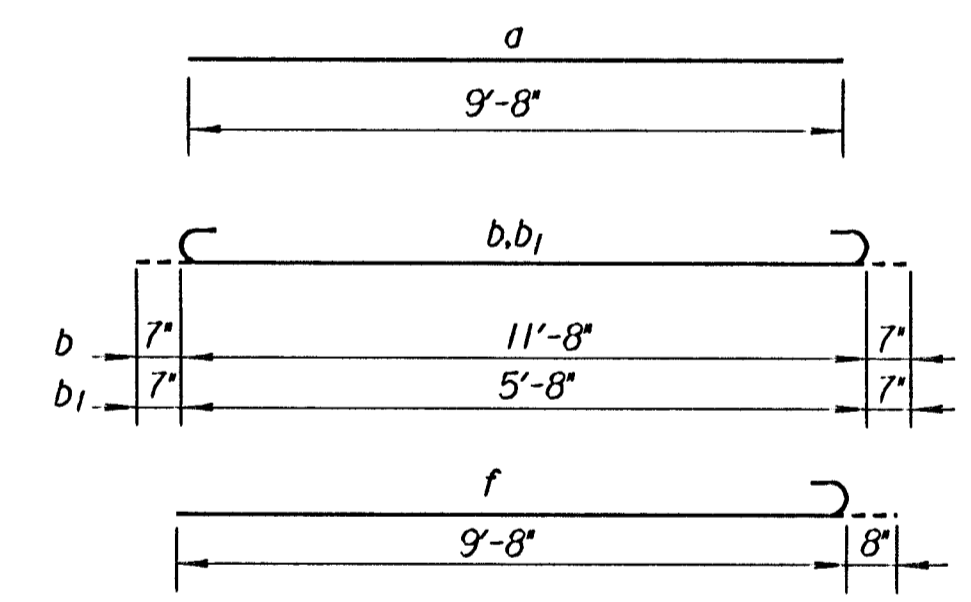
PLAN VIEW

See Sidewalk Detail Sheets for joint spacing and elevations.
 Note: Spacing of longitudinal reinforcing bars is normal to center line. Spacing of transverse reinforcing bars is parallel to center line.

BILL OF MATERIALS (WEST APPROACH)							
Bar Schedule							
Bar No.	a	b	b ₁	c	c ₁	e	f
40	20	20		14	14	84	72
Size	#5	#5	#5	#5	#5	#6	#6
Length	9'-8"	12'-10"	6'-10"	11'-8"	5'-8"	3'-0"	10'-4"
* Reinforcing Steel (Epoxy Coated)							2,980 Lbs.
Concrete Pavement (10' Unif.) (A.E.)							120.0 Sq. Yds.

BILL OF MATERIALS (EAST APPROACH)							
Bar Schedule							
Bar No.	a	b	b ₁	c	c ₁	e	f
40	20	20		14	14	84	72
Size	#5	#5	#5	#5	#5	#6	#6
Length	9'-8"	12'-10"	6'-10"	11'-8"	5'-8"	3'-0"	10'-4"
* Reinforcing Steel (Epoxy Coated)							2,980 Lbs.
Concrete Pavement (10' Unif.) (A.E.)							120.0 Sq. Yds.

* Reinforcing steel shown for information only. Includes welded wire fabric weight.



Note: All dimensions are out to out of bars unless noted otherwise.

BENDING DIAGRAMS

Drawn by: rcs/wll
 Plotted by: ras 3-27-2004
 1/1996/96940/002/df/tech/approach.dgn

No.	Revisions	By	Date

CITY OF WICHITA, KANSAS
 JAMES L. ARMOUR, P.E. - ACTING CITY ENGINEER
 MURDOCK BRIDGE
 OVER LITTLE ARKANSAS RIVER
 APPROACH SLAB
 CITY OF WICHITA PROJECT NO. 472-8395

Professional Engineering Consultants, P.A.
 303 S. TOPEKA - WICHITA, KANSAS 67202
 316-262-2591 - FAX 316-262-3003

Designed by: RAS
 Checked by:
 Drawn by: RAS
 Date: March 2004
 Job No. 96940-2