

GENERAL NOTES

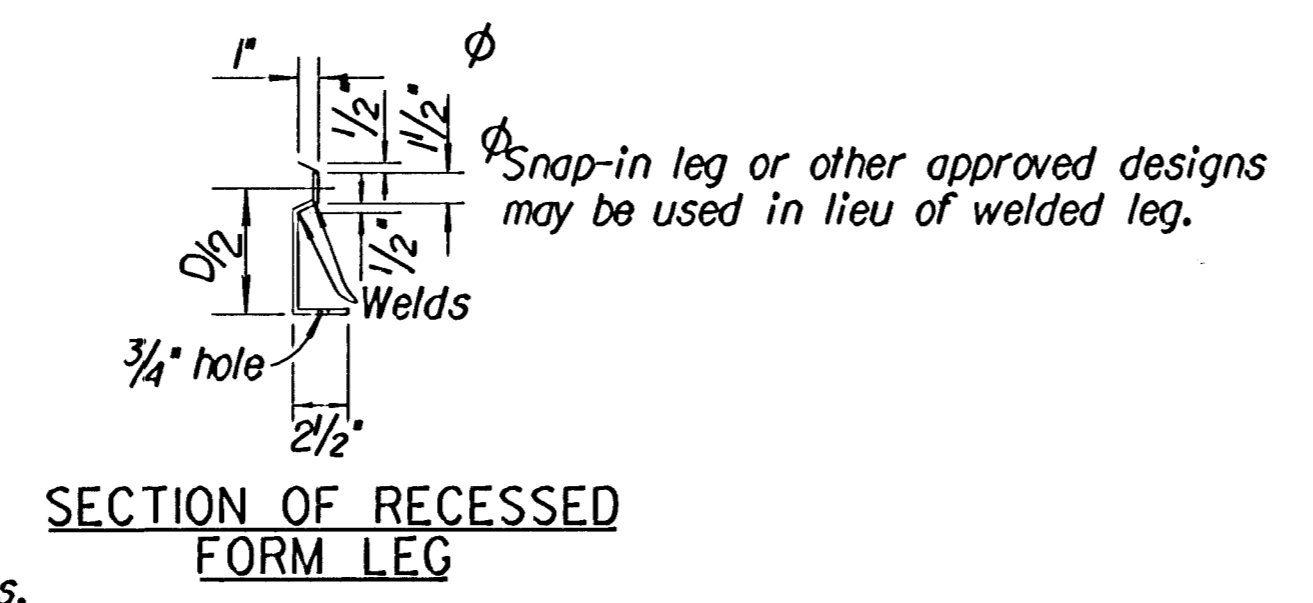
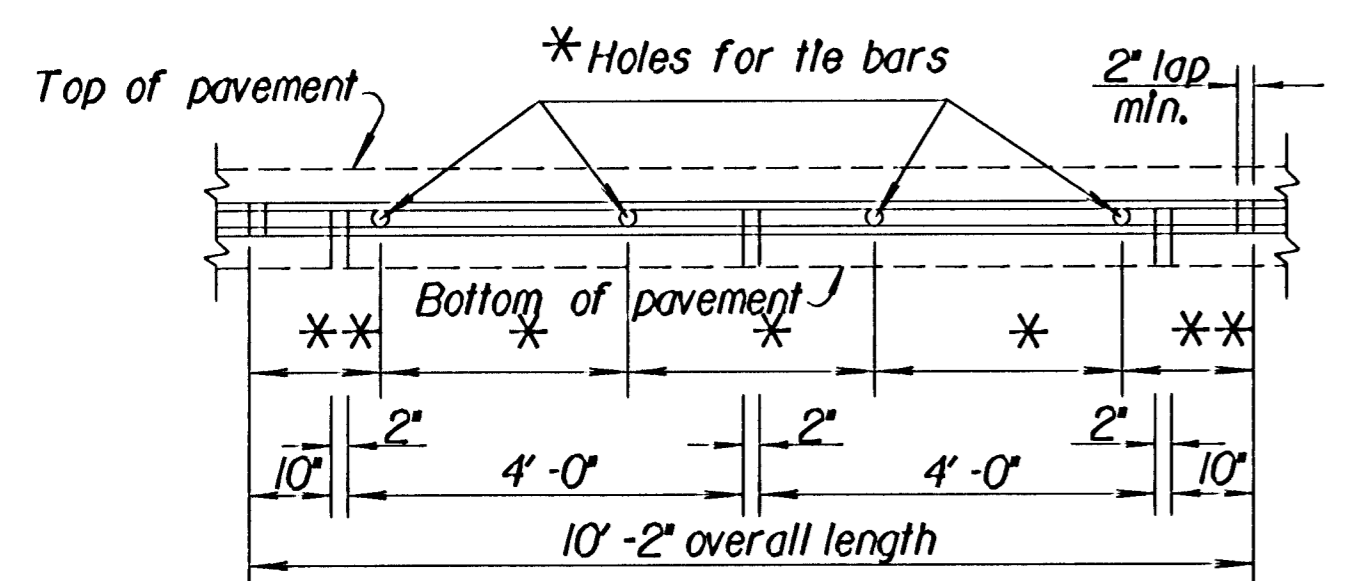
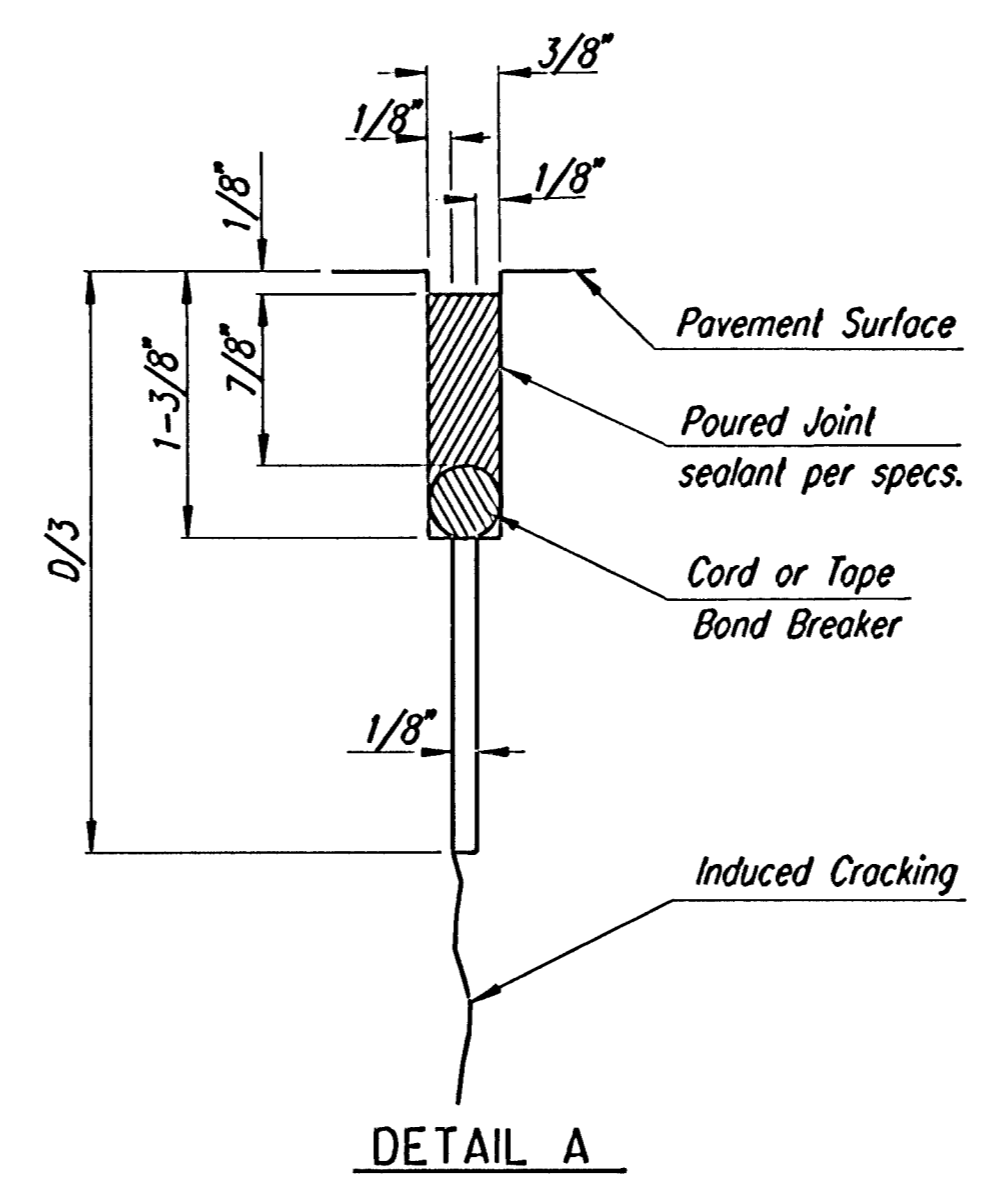
All work shall be done in conformity with the Standard Specifications applicable to the project.

The cost of all bars, mesh and joint material shown on this sheet is to be included in the bid price for Concrete Pavement.

At each planned transverse joint location, a 4 to 6 inch wide strip of the pavement surface shall be protected from the texturing operation to provide a transverse textureless surface centered over the joint sawcut.

All joints on this project shall be sawed and filled with sealant in accordance with Standard Specifications.

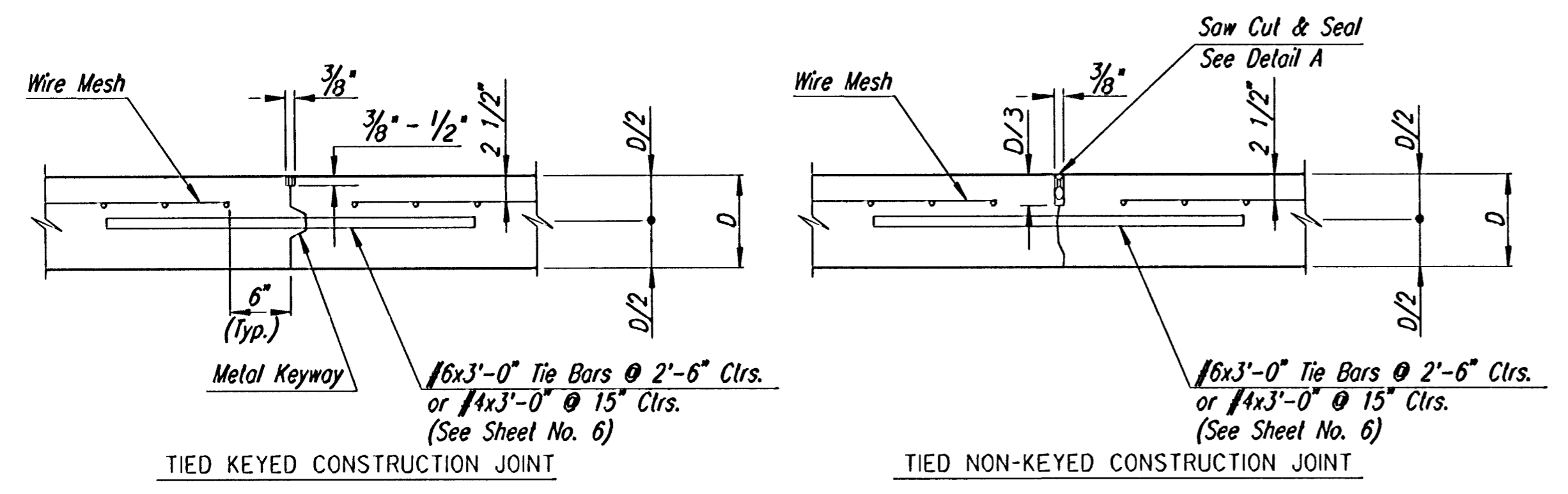
All materials and work required for this construction shall be subsidiary to the concrete approach slab or sidewalk construction.



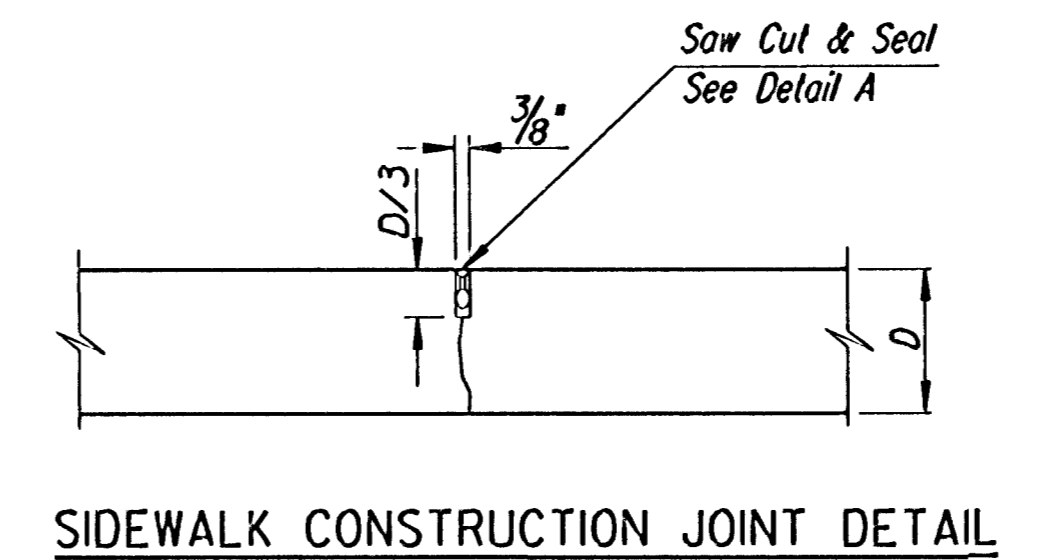
To be used only against forms. Shall not extend through contraction joints.

* Tie bar size and spacing shall be as shown in table.
 ** Space variable depending on tie bar spacing. Shall not exceed one half tie bar spacing plus one inch.

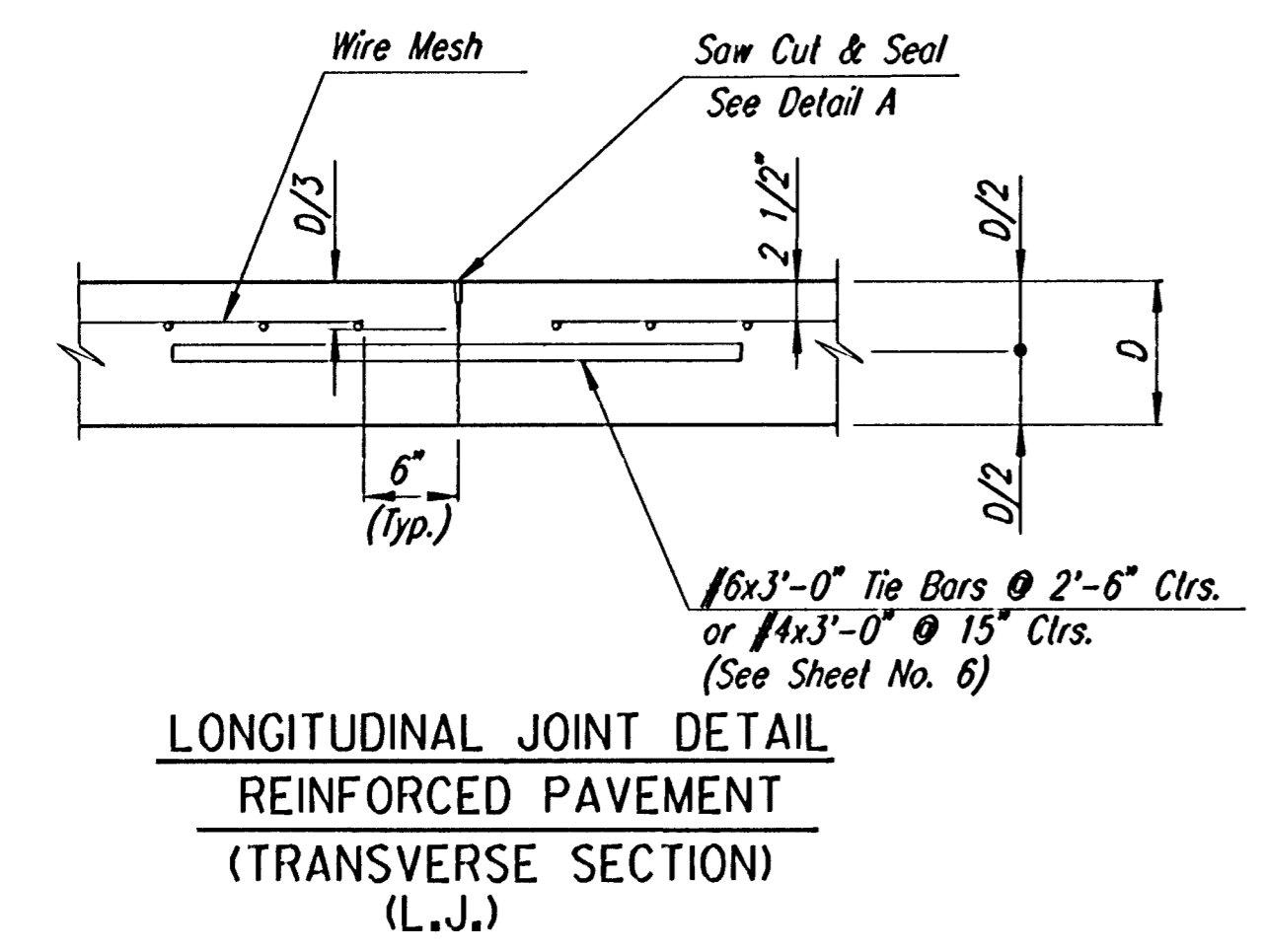
METAL STRIP FOR LONGITUDINAL CONSTRUCTION JOINT



LONGITUDINAL CONSTRUCTION JOINT DETAIL REINFORCED PAVEMENT (TRANSVERSE SECTION) (L.J.)



SIDEWALK CONSTRUCTION JOINT DETAIL



LONGITUDINAL JOINT DETAIL REINFORCED PAVEMENT (TRANSVERSE SECTION) (L.J.)

Drawn by: wil
 plotted by: ras 1/13/2004
 1:/1996/96940/002/ort1cecheck/prmtmisc.dgn

No.		Revisions		By	Date
CITY OF WICHITA, KANSAS JAMES L. ARMOUR, P.E.-ACTING CITY ENGINEER MURDOCK BRIDGE OVER LITTLE ARKANSAS RIVER MISCELLANEOUS PAVEMENT DETAILS CITY OF WICHITA PROJECT NO. 472-83895					
Professional Engineering Consultants, P.A. 303 S. TOPEKA • WICHITA, KANSAS 67202 316-262-2691 • FAX 316-262-3003					
Designed by	RAS	Checked by	R.A.S.		
Drawn by	RAS	Date	Oct. 2003	Job No.	96940-2