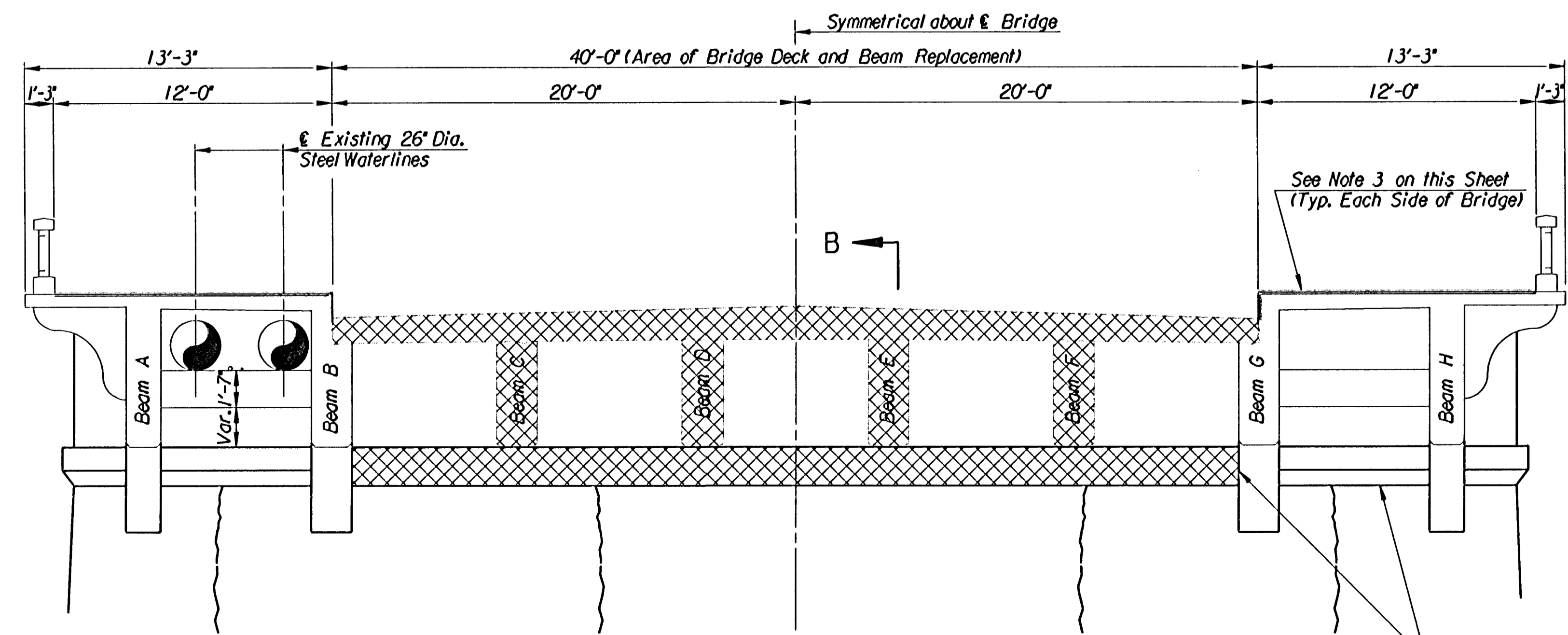
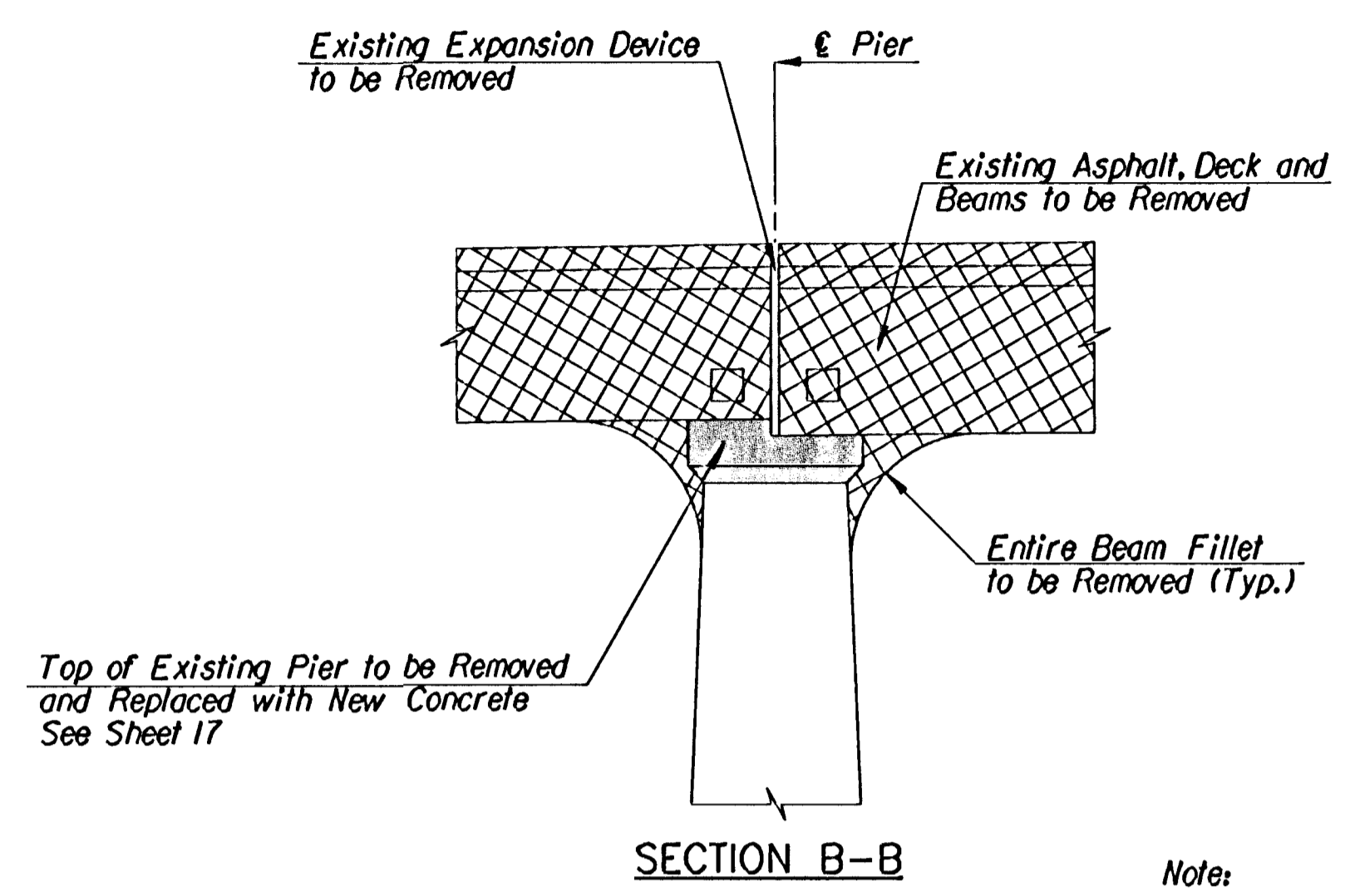


HALF SECTION NEAR PIER HALF SECTION NEAR MIDSPAN
TYPICAL DECK SECTION



TYPICAL SECTION NEAR PIER



Note:

1. All existing exposed reinforcing steel in the beams shall be cleaned and field epoxy coated.
2. See Sheet No. 30 for Concrete Repair Procedures.
3. Remove 1/2" of Sidewalk Surface and replace with 1/2" Fibermesh Concrete. Integral color to Match Existing Bridge Rail.

Legend

- Concrete Area to be Reconstructed or Removed
- Cracks to be Pressure Grouted See Sheet No. 30.

1/1966/96940/002/officecheck/removal.dgn
drawn by: wil
plotted by: ras 1-27-2003

No.	Revisions	By	Date
CITY OF WICHITA, KANSAS JAMES L. ARMOUR, P.E.-ACTING CITY ENGINEER MURDOCK BRIDGE OVER LITTLE ARKANSAS RIVER PIER REMOVAL DETAILS CITY OF WICHITA PROJECT NO. 472-83895			
Professional Engineering Consultants, P.A. 303 S. TOPEKA • WICHITA, KANSAS 67202 316-262-2691 • FAX 316-262-3003			
Designed by	R.W.A.	Checked by	R.A.S.
Drawn by	W.L.L.	Date	July 2003
		Job No.	96940-2