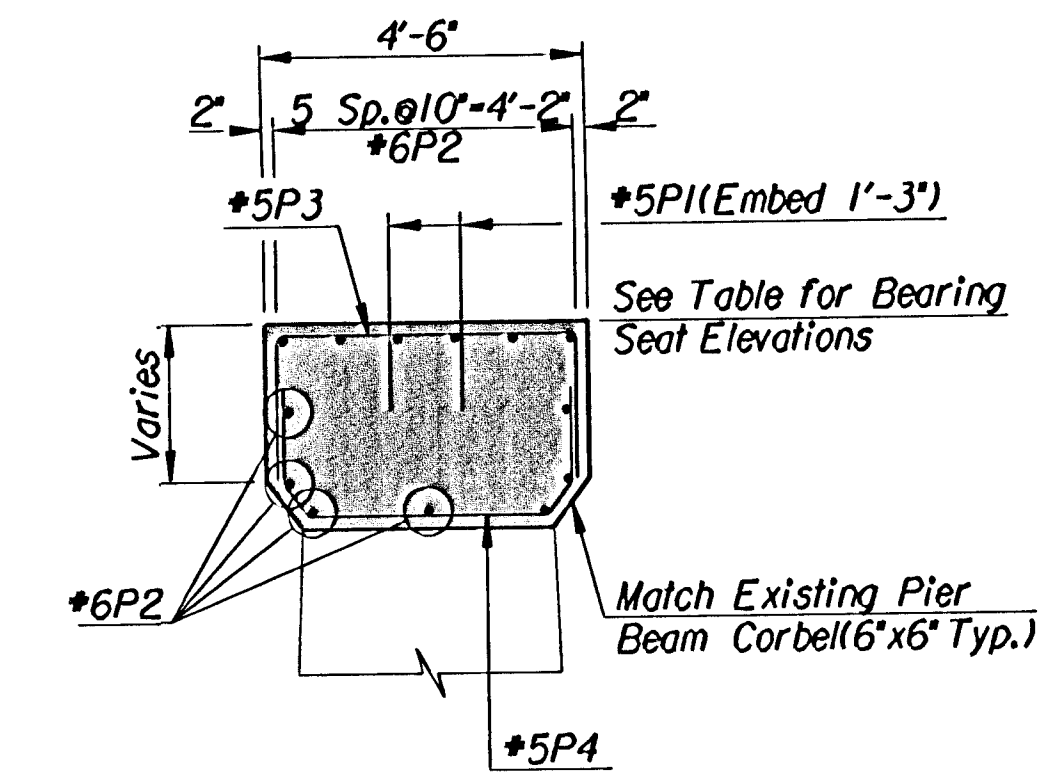


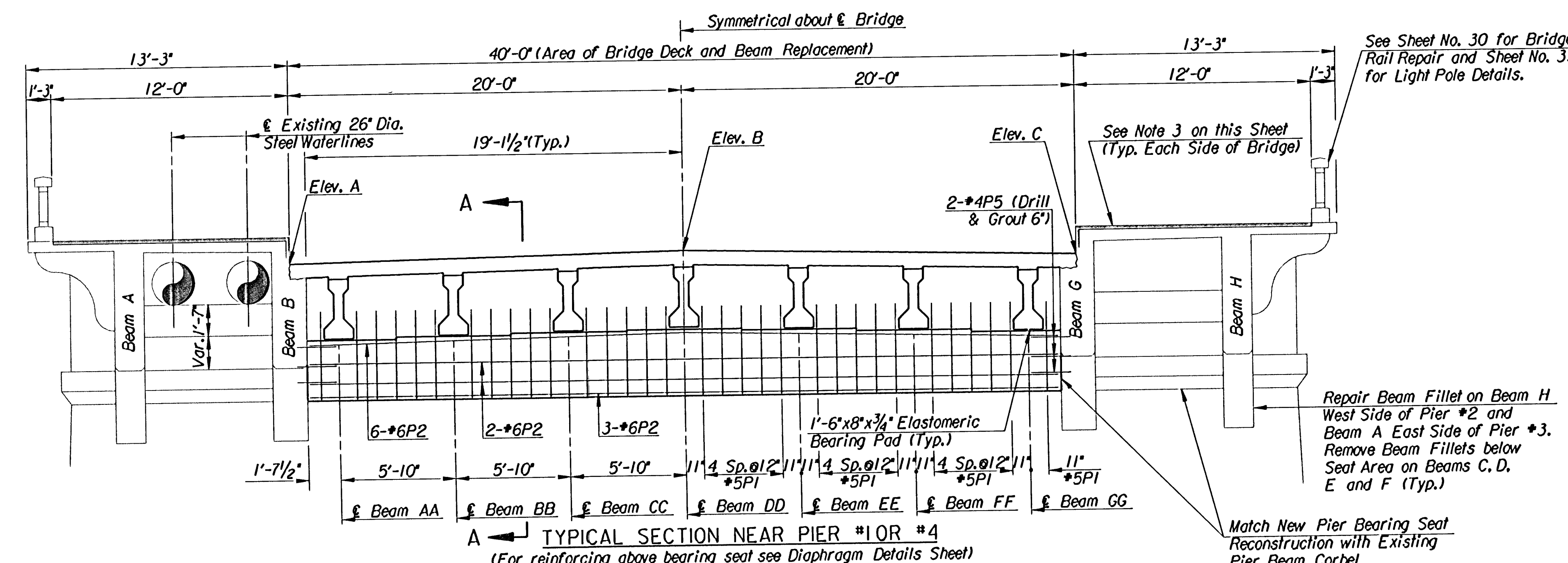
See Sheet No. 30 for Superstructure Beam Repair Procedures (Field Verify Existing Reinforcing) Typical at Beams A, B, G and H.

See Sheet No. 30 for Bridge Rail Repair and Sheet No. 33 for Light Pole Details.

See Sheet No. 30 for Underside of Sidewalk Deck Repairs and Sheet No. 29 for Areas to be Repaired



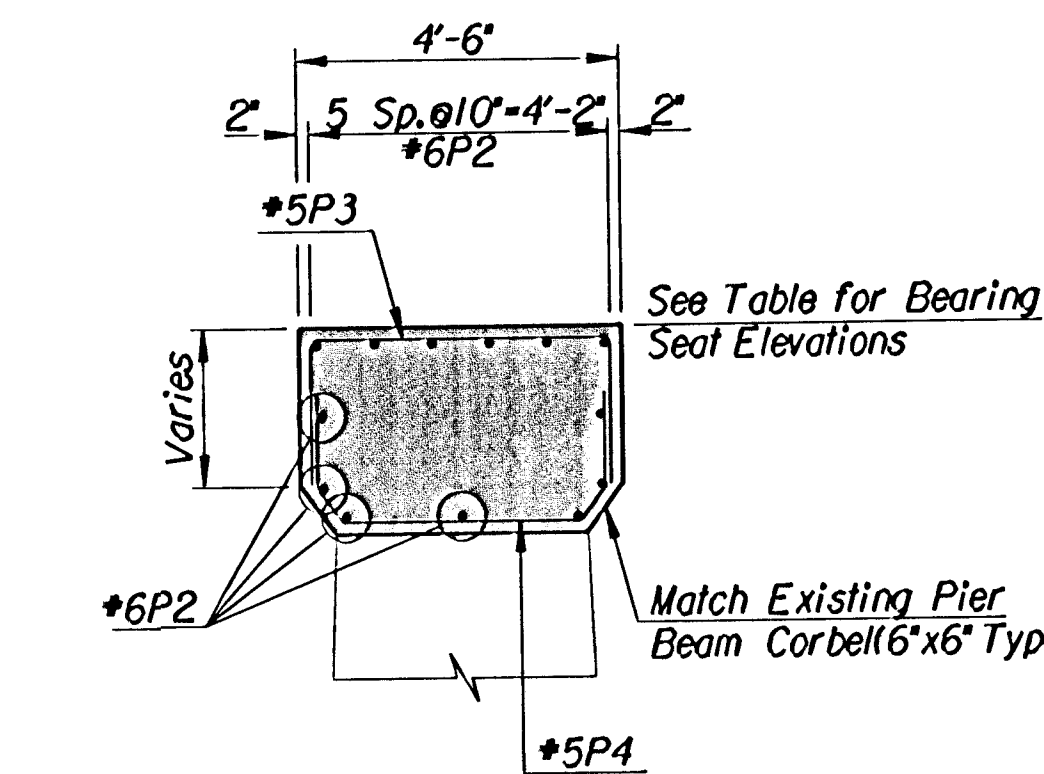
SECTION A-A
(Space #5P3&P4 with P1 bars)



See Sheet No. 30 for Bridge Rail Repair and Sheet No. 33 for Light Pole Details.

Repair Beam Fillet on Beam H West Side of Pier #2 and Beam A East Side of Pier #3. Remove Beam Fillets below Seat Area on Beams C, D, E and F (Typ.)

Match New Pier Bearing Seat Reconstruction with Existing Pier Beam Corbel

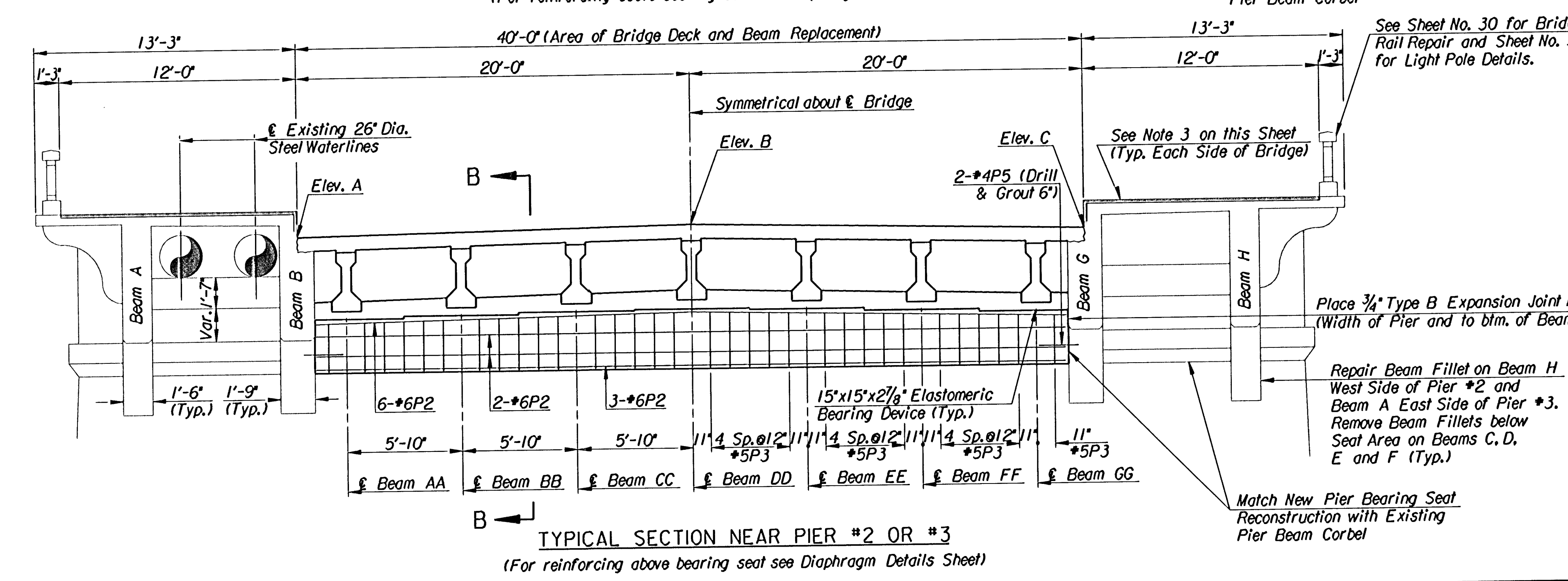


SECTION B-B
(Space #5P4 with P3 bars)

- Note:**
- All existing exposed reinforcing steel to be extended into the beams shall be cleaned.
 - See Sheet No. 30 for Concrete Repair Procedures.
 - Remove 1" of Sidewalk Surface and replace with 1" Fibermesh Concrete. Integral color to Match Existing Bridge Rail.

LEGEND:
Cracks to be Pressure Grouted See Sheet No. 30.

TABLE OF ELEVATIONS				
Location	Pier #1 Elevation	Pier #2 Elevation	Pier #3 Elevation	Pier #4 Elevation
Elev. A	1308.18	1309.17	1309.18	1308.21
Elev. B	1308.49	1309.48	1309.49	1308.52
Elev. C	1308.18	1309.17	1309.18	1308.21
Beam AA Brg. Seat	1304.32	1305.13	1305.15	1304.35
Beam BB Brg. Seat	1304.41	1305.23	1305.24	1304.45
Beam CC Brg. Seat	1304.51	1305.32	1305.33	1304.54
Beam DD Brg. Seat	1304.60	1305.41	1305.42	1304.63
Beam EE Brg. Seat	1304.51	1305.32	1305.33	1304.54
Beam FF Brg. Seat	1304.41	1305.23	1305.24	1304.45
Beam GG Brg. Seat	1304.32	1305.13	1305.15	1304.35
Conc. Removal Line	1301.25 +/-	1302.22 +/-	1302.24 +/-	1301.28 +/-



See Sheet No. 30 for Bridge Rail Repair and Sheet No. 33 for Light Pole Details.

Repair Beam Fillet on Beam H West Side of Pier #2 and Beam A East Side of Pier #3. Remove Beam Fillets below Seat Area on Beams C, D, E and F (Typ.)

Match New Pier Bearing Seat Reconstruction with Existing Pier Beam Corbel

Place 3/4" Type B Expansion Joint Material (Width of Pier and to btm. of Beam B or G)

Revisions		By	Date
No.			
CITY OF WICHITA, KANSAS JAMES L. ARMOUR, P.E. - ACTING CITY ENGINEER MURDOCK BRIDGE OVER LITTLE ARKANSAS RIVER SUPERSTRUCTURE DETAILS CITY OF WICHITA PROJECT NO. 472-83895			
Professional Engineering Consultants, P.A. 303 S. TOPEKA • WICHITA, KANSAS 67202 316-262-2691 • FAX 316-262-3003			
Designed by	R.W.A.	Checked by	R.A.S.
Drawn by	W.L.L.	Date	July 2003
		Job No.	96940-2

12/1996/96940/002/otf/cecheck/superdet
drawn by: ras
plotted by: ras 1-27-2004