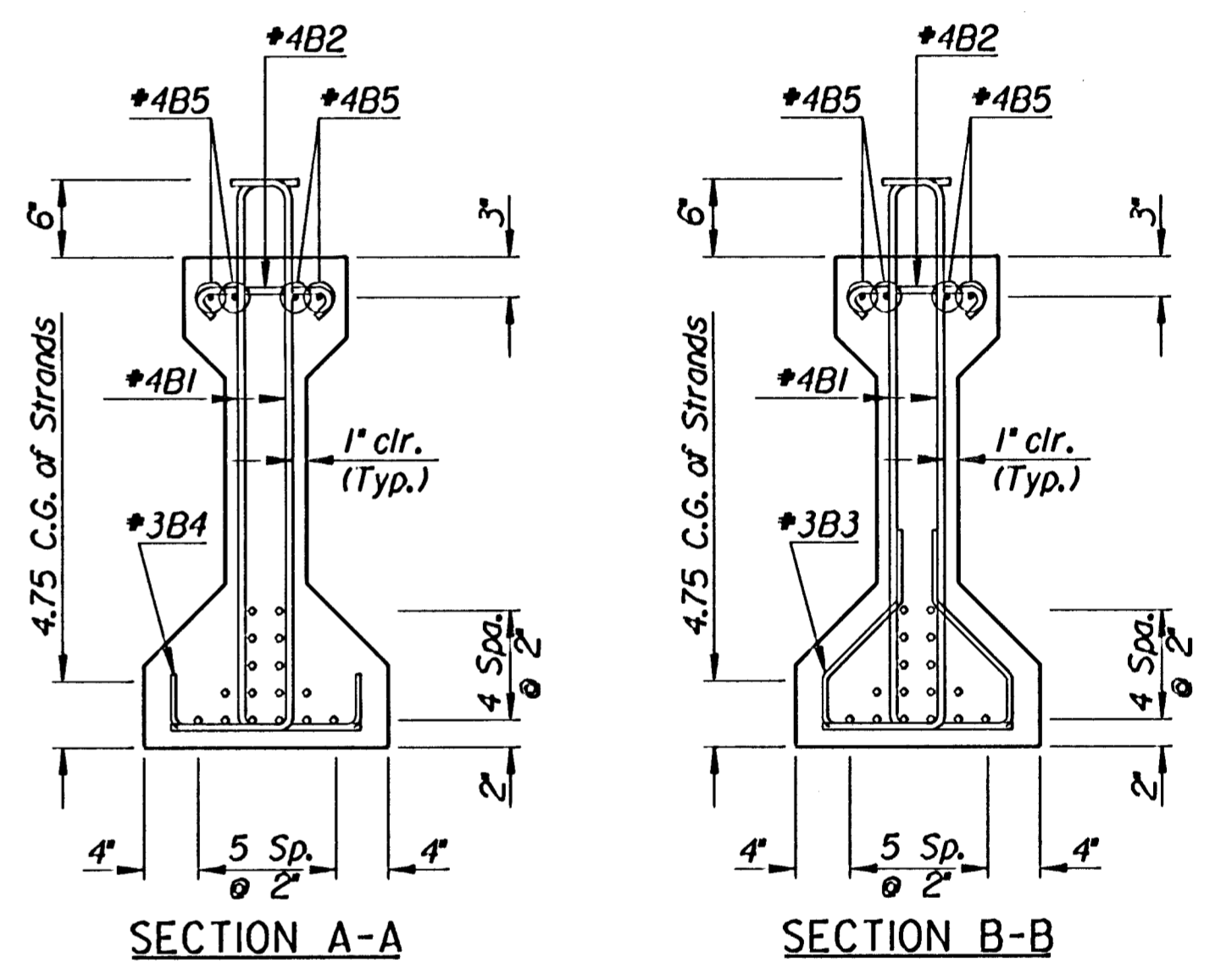
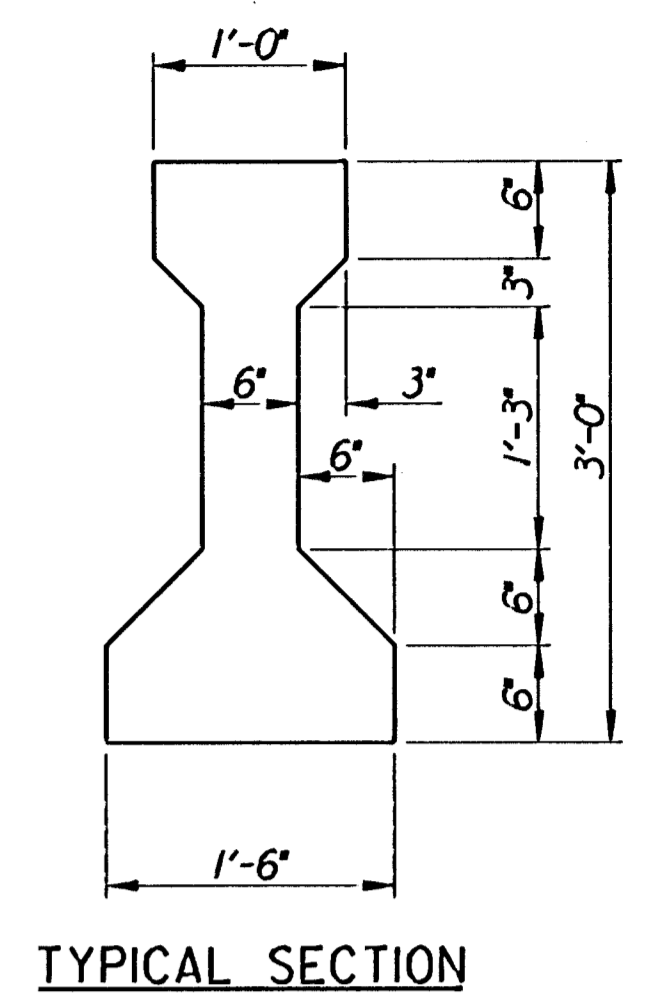


ELEVATION OF PRESTRESSED CONCRETE BEAM
(54'-2" Beam)
7 Req'd.-10.4 Tons/Beam



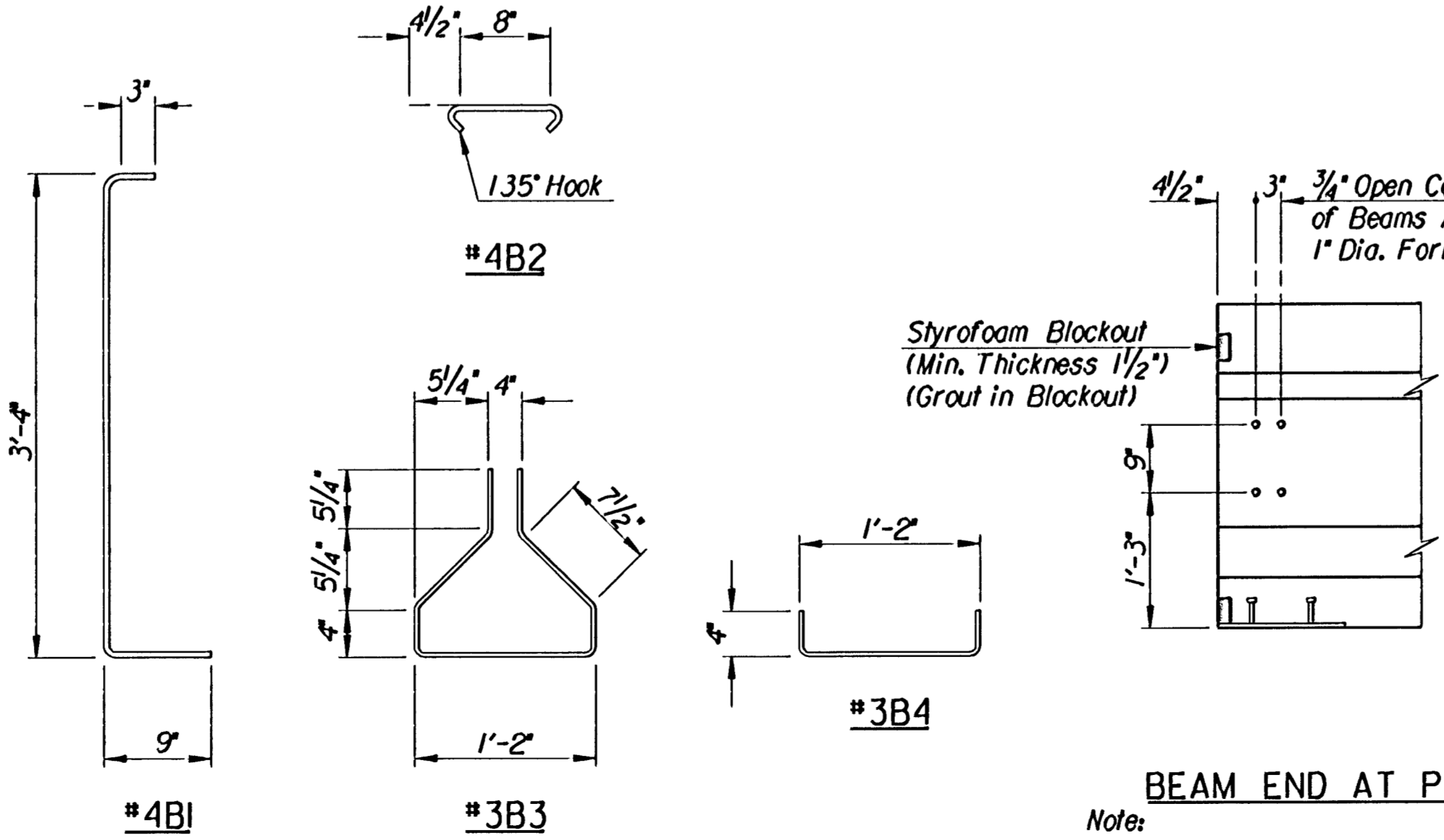
Note:
Reinforcing Steel shall be Grade 60 unless otherwise designated in the Bar List.
Ends of Prestressed Beams shall be treated with an approved sealer prior to diaphragm construction.

REINFORCING STEEL			
Mark	No.	Size	Length
54'-2" Beam-1 Listed-7 Req'd.			
STRAIGHT BARS			
B5	8	*4	27'-8"
BENT BARS			
B1	142	*4	4'-4"
*B2	71	*4	1'-5"
*B3	38	*3	4'-0"
*B4	33	*3	1'-10"

* Grade 40 may be substituted.

SUMMARY OF QUANTITIES		
Item	Unit	Total
Prestressed Concrete Beams (K2 - 54'-2" Beam)	Lin. Ft.	379.17
The following Quantities are given for Information Only (Total for 7 Beams)		
Concrete in Beams (1" c = 6,000 p.s.i.)	Cu. Yds.	36.0
Prestressing Steel A416 1/2" Dia. (Low Relaxation)	Lin. Ft.	6,067
Reinforcing Steel (Grade 60) (Epoxy Coated)	Lbs.	4,941
Elastomeric Bearing Pads (D60) (3/4"x8"x1'-6")	Each	-----
3/4" Open Coil Insert 6.0M (Coil Thread)	Each	24
3/4" Threaded Coil Rods x 1'-6"	Each	24
End Bearing Plates (Galvanized) (1/2"x15"x1'-4")	Each	14

6.0M Designates 6000 Lbs. Load in Tension.



BENDING DIAGRAMS
Dimensions are out to out of bars.

BEAM END AT PIER
Note:
No strands are to be extended at this location. All strands shall be cut flush with the inside face of the Styrofoam Blockout.

drawn by: wil
plotted by: ras 3-22-2004
i:/1996/96940/002/office/tech/K2span3

No.	Revisions	By	Date
CITY OF WICHITA, KANSAS JAMES L. ARMOUR, P.E.-ACTING CITY ENGINEER MURDOCK BRIDGE OVER LITTLE ARKANSAS RIVER K2 BEAM DETAILS SPAN NO. 3 CITY OF WICHITA PROJECT NO. 472-83895			
Professional Engineering Consultants, P.A. 303 S. TOPEKA • WICHITA, KANSAS 67202 316-262-2691 • FAX 316-262-3003			
Designed by	R.A.S.	Checked by	M.S.N.
Drawn by	W.L.L.	Date	March 2004 Job No. 96940-2