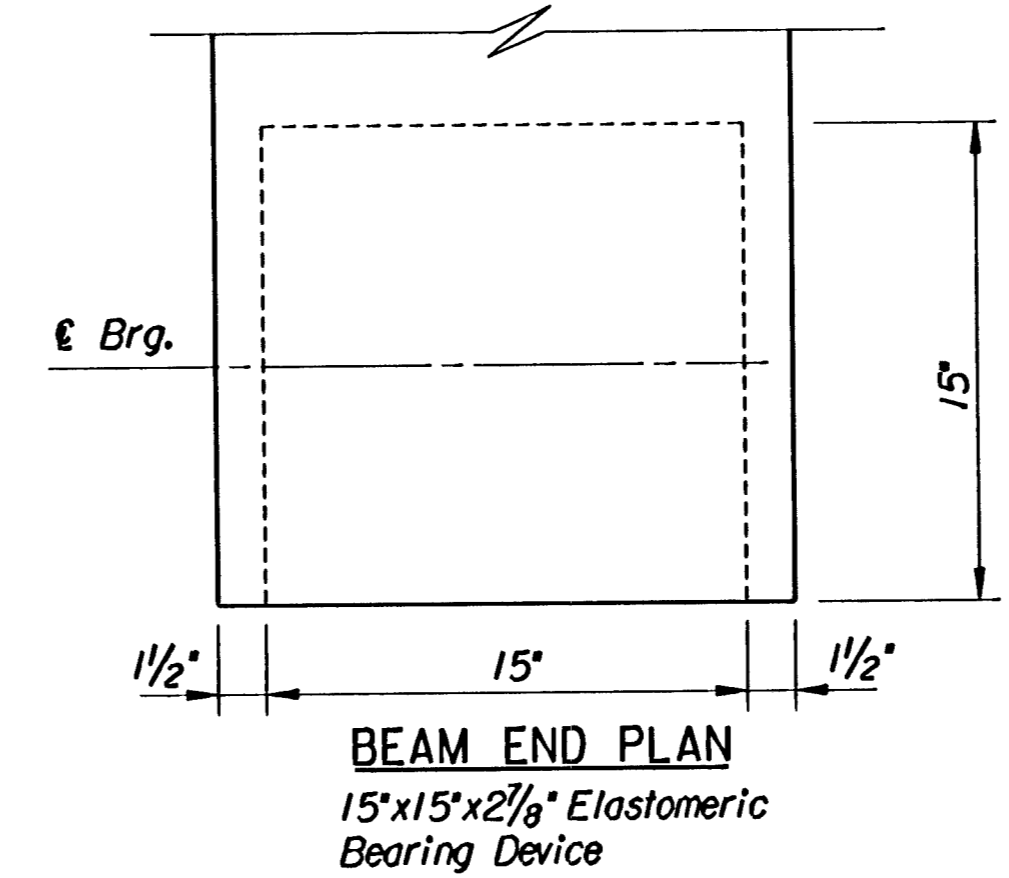
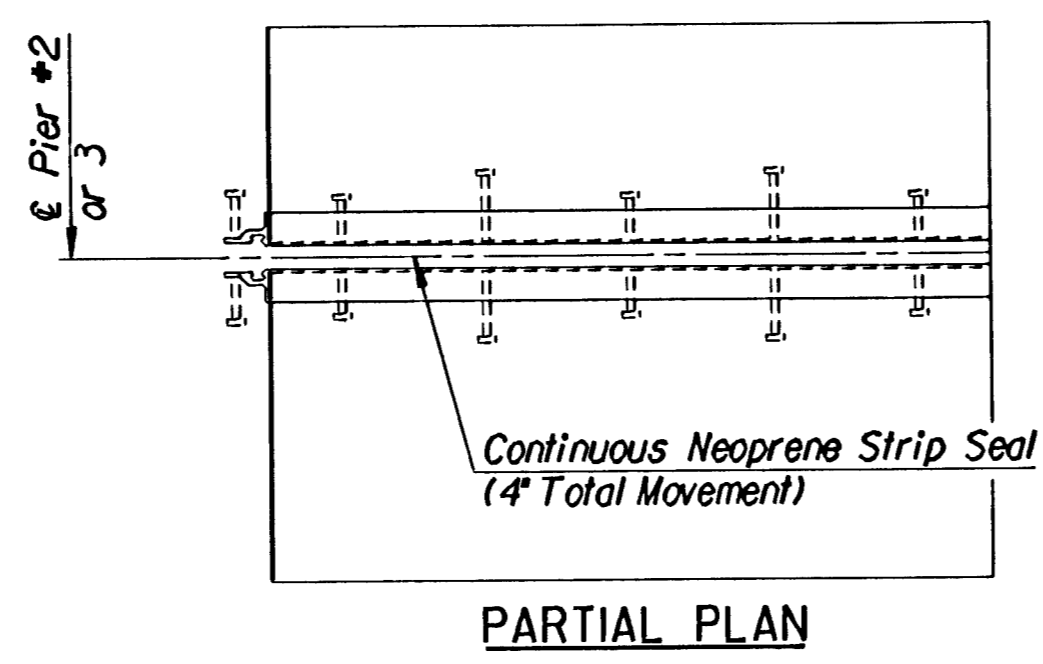
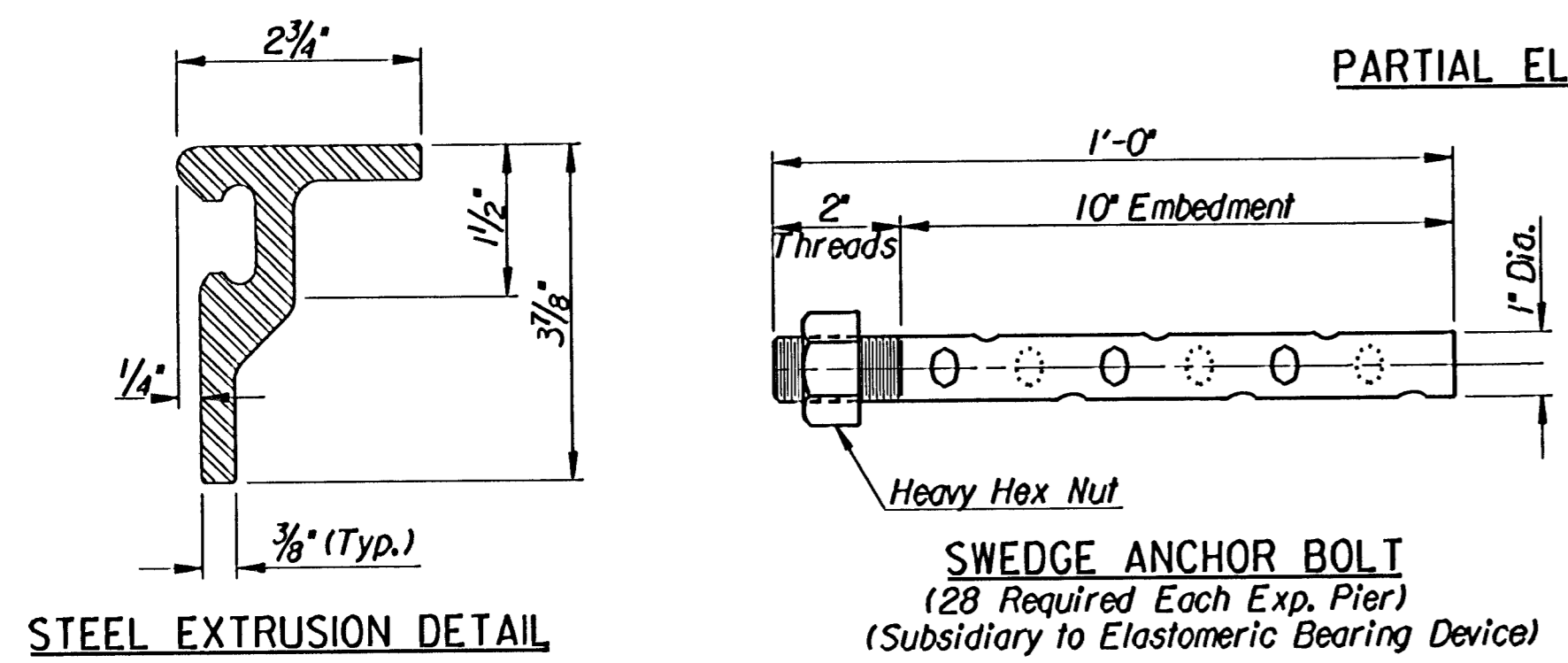
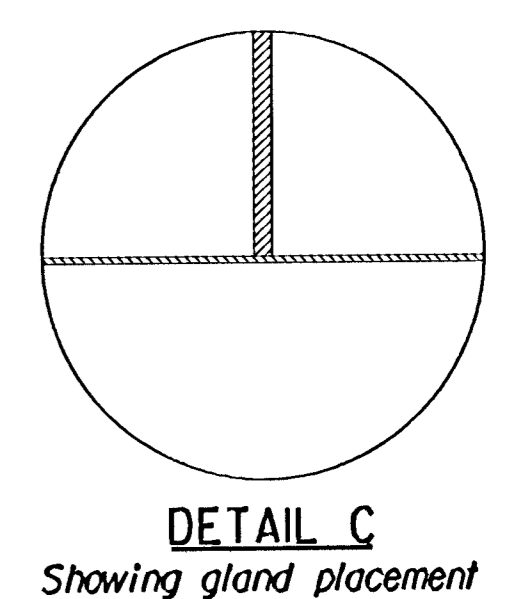
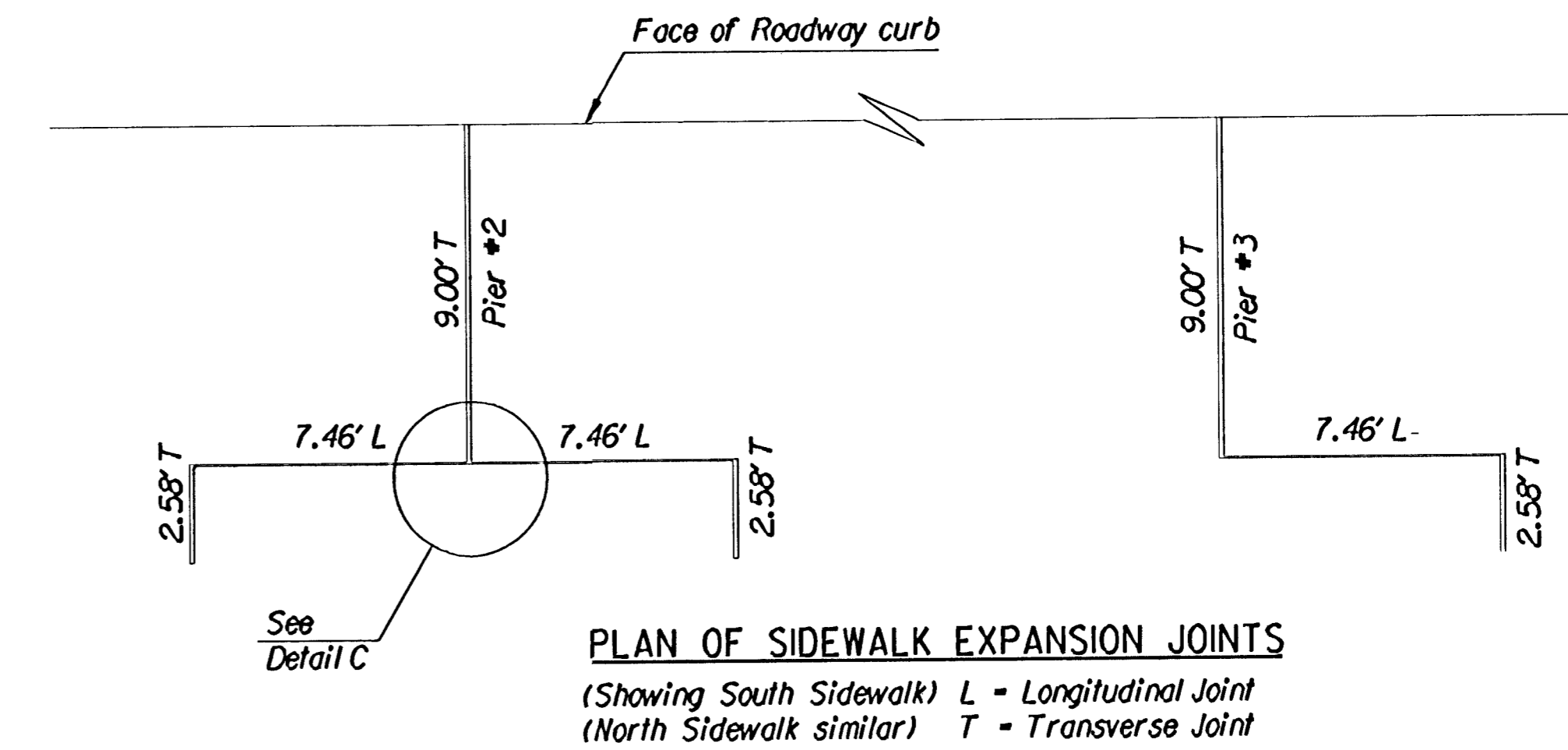
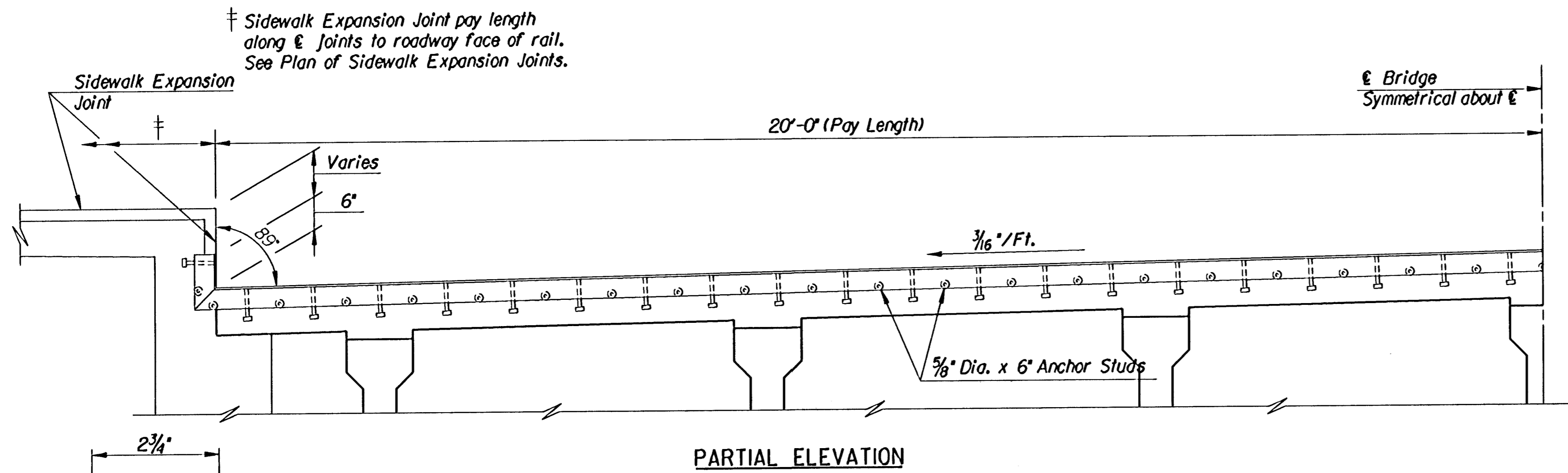
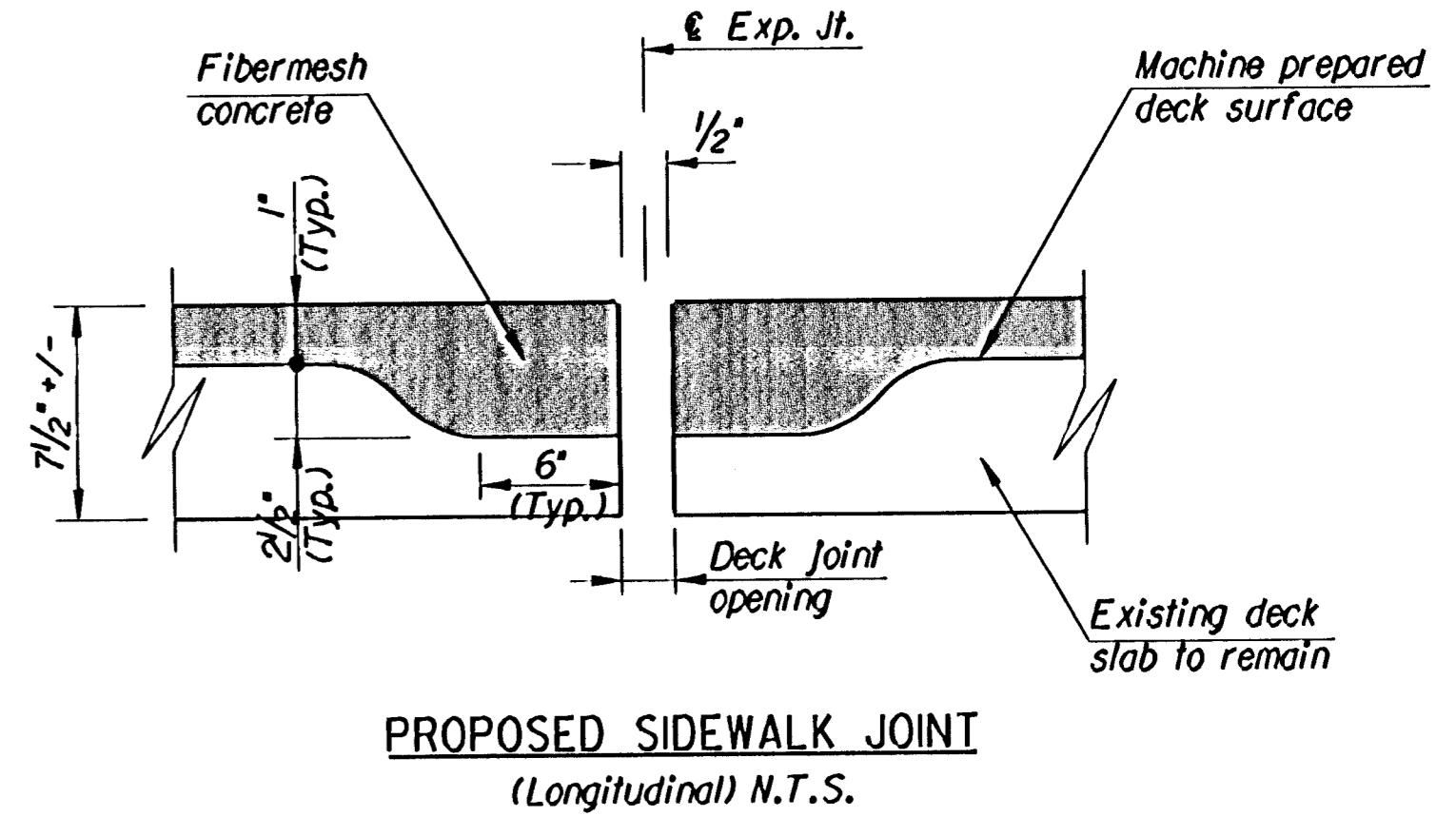
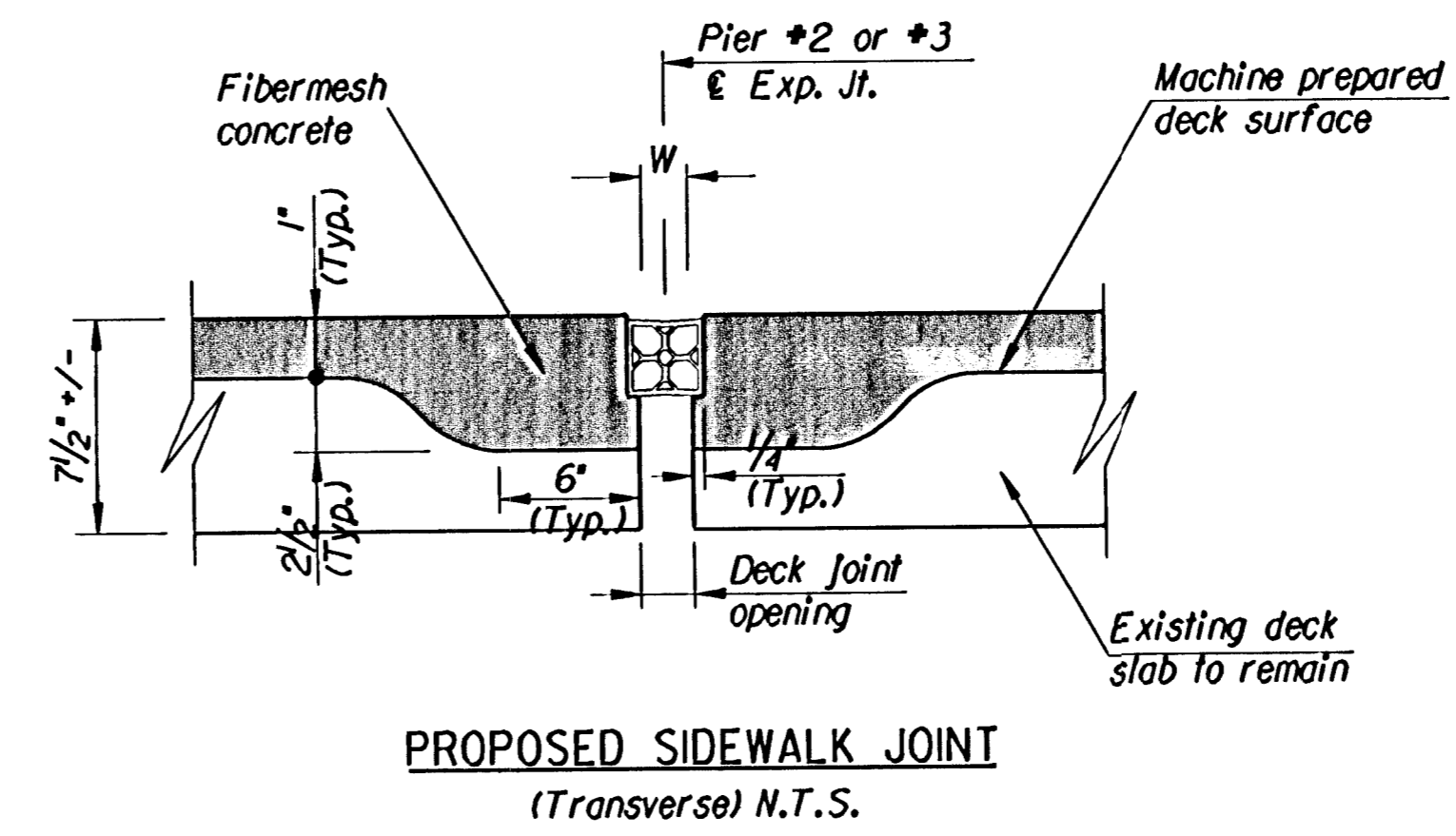
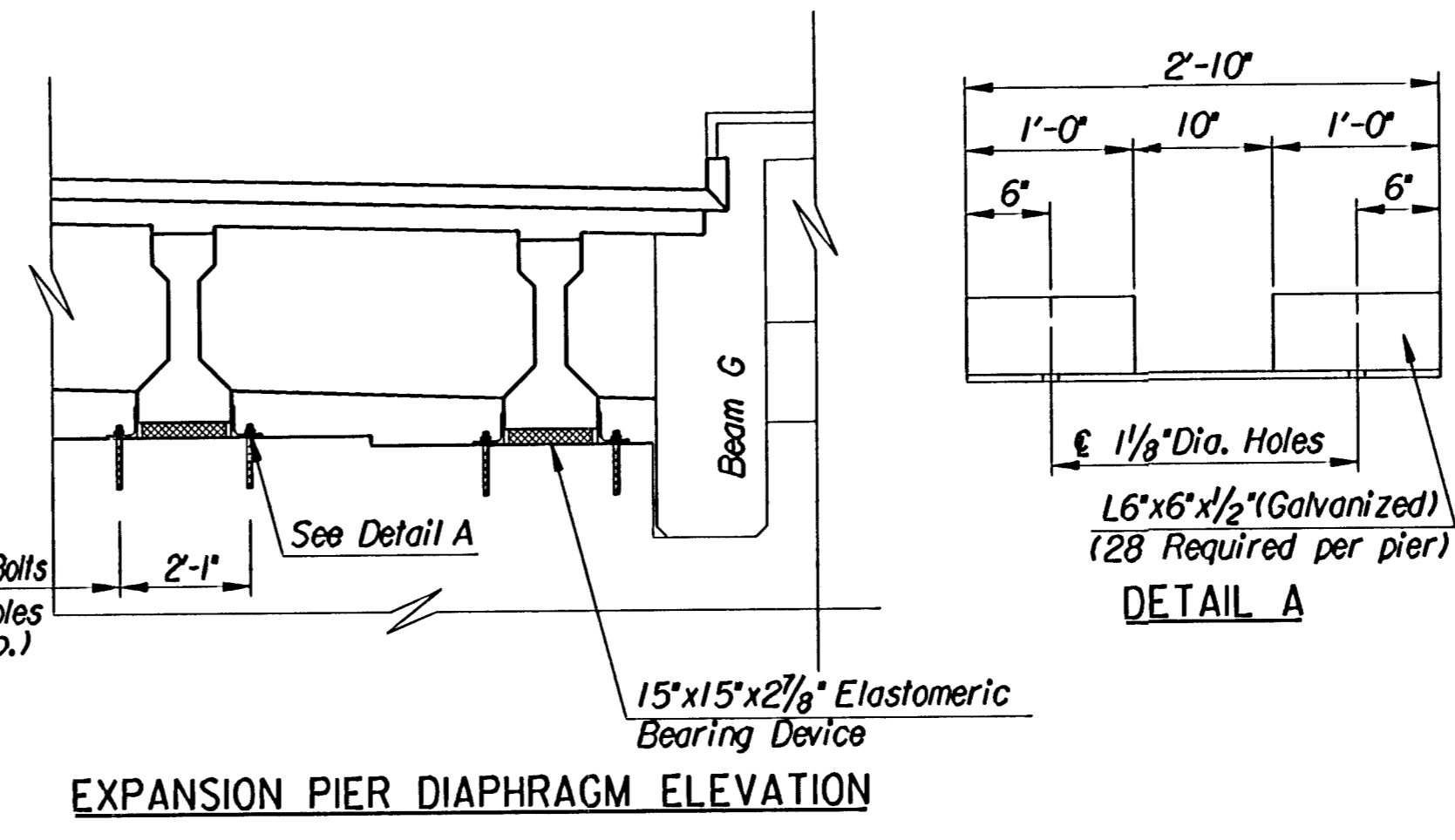
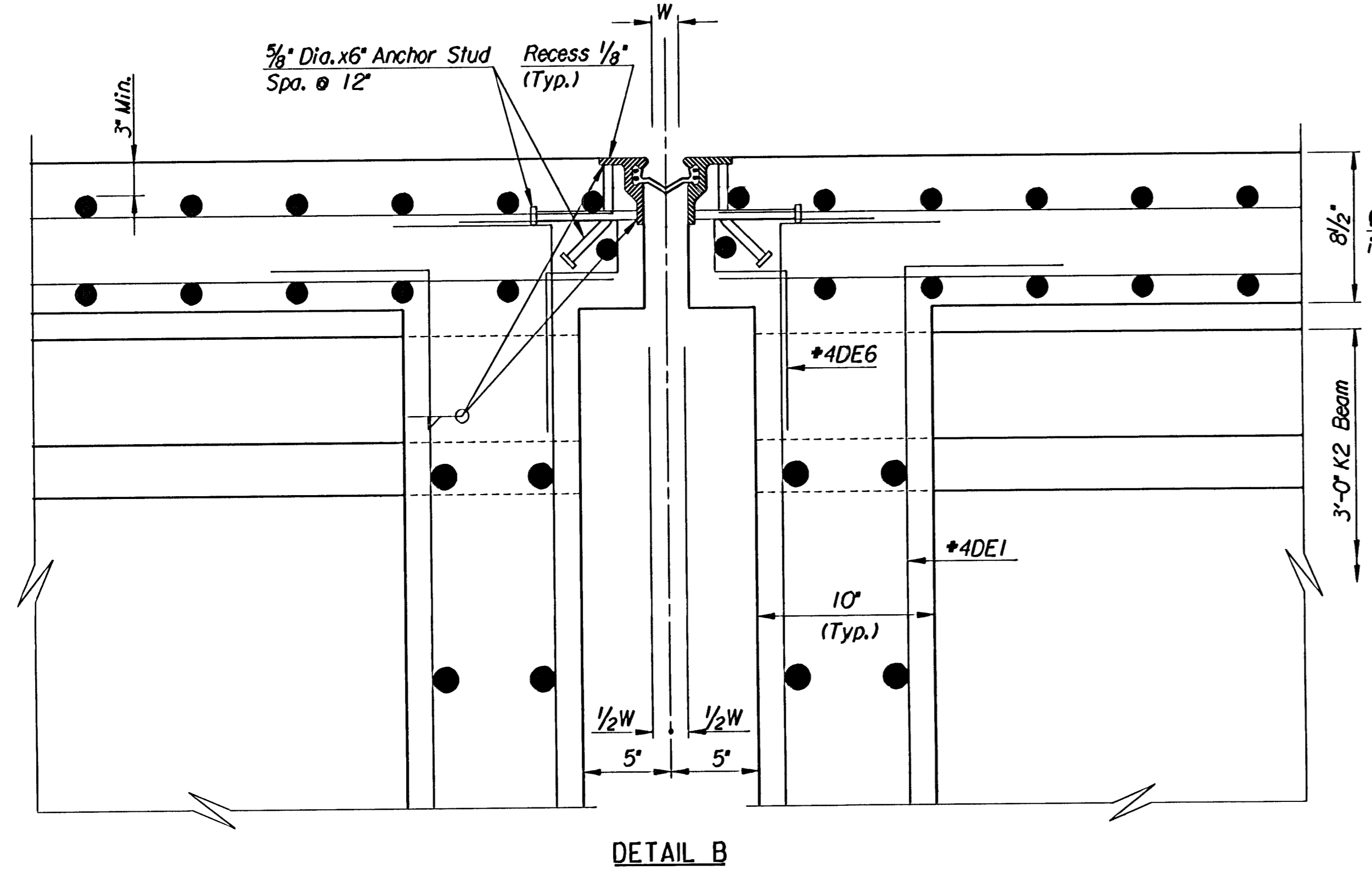


TABLE OF DIMENSIONS							
Temperature	30°	40°	50°	60°	70°	80°	90°
Dimension "W"	1 1/16"	1 1/8"	1 1/4"	1 3/8"	1 1/2"	1 5/8"	1 3/4"

**ELASTOMERIC BEARING DEVICE:** The Device shall consist of 6 layers of 3/8" elastomer of durometer hardness 60. These layers shall be separated by a 1/8" steel strip (A709 Gr. 36). See Special Provisions of K.D.O.T. Specifications.

**STRIP SEAL ASSEMBLY:** The Strip Seal Assembly shall conform to KDOT Specifications for "Strip Seal Assembly (Type I)" and shall accommodate a total movement of at least 4 inches. Structural Steel shall conform to ASTM A709 GR. 36 unless otherwise noted. The Assembly shall be installed to match the Roadway Grade and Cross Slope. Material for the wedge grips shall be solid extruded or hot rolled steel. No ASTM A588 steel or aluminum will be allowed. All Steel Plate Armoring material and installation shall be subsidiary to "Strip Seal Assembly."

**PREFORMED ANCHOR BOLT HOLES:** The Contractor shall preform, at the locations shown, 2 1/2" diameter holes with roughened inside surfaces. The preforming method shall be approved by the Engineer. The preformed holes shall be sealed in such a manner that water will not accumulate in the holes and freeze prior to the time of grouting the anchor bolts. The holes shall also be free of water or foreign materials at the time of grouting. This work shall be subsidiary to Class AAA (AE) Concrete.



**Note:**  
The nominal dimensions shown are suggested dimensions only. The Contractor may select alternate shapes for the Steel Extrusion. Details for Proposed alternate shapes shall be submitted to the Engineer for approval prior to fabrication. The Contractor shall show on the Shop Plans his Proposed Method of supporting the Expansion Device during placement and curing of the Deck Concrete.

Revisions		By	Date
<p>CITY OF WICHITA, KANSAS          JAMES L. ARMOUR, P.E.-ACTING CITY ENGINEER          MURDOCK BRIDGE          OVER LITTLE ARKANSAS RIVER          EXPANSION JOINT PIER DETAILS          CITY OF WICHITA PROJECT NO. 472-83895</p>			
<p>Professional Engineering Consultants, P.A.          303 S. TOPEKA • WICHITA, KANSAS 67202          316-262-2691 • FAX 316-262-3003</p>			
Designed by	R.A.S.	Checked by	R.A.S.
Drawn by	MAF	Date	March 2004 Job No. 96340-2

12/1996/96340/002/expans1.dgn  
 drawn by: ras  
 plotted by: ras 3-27-2004