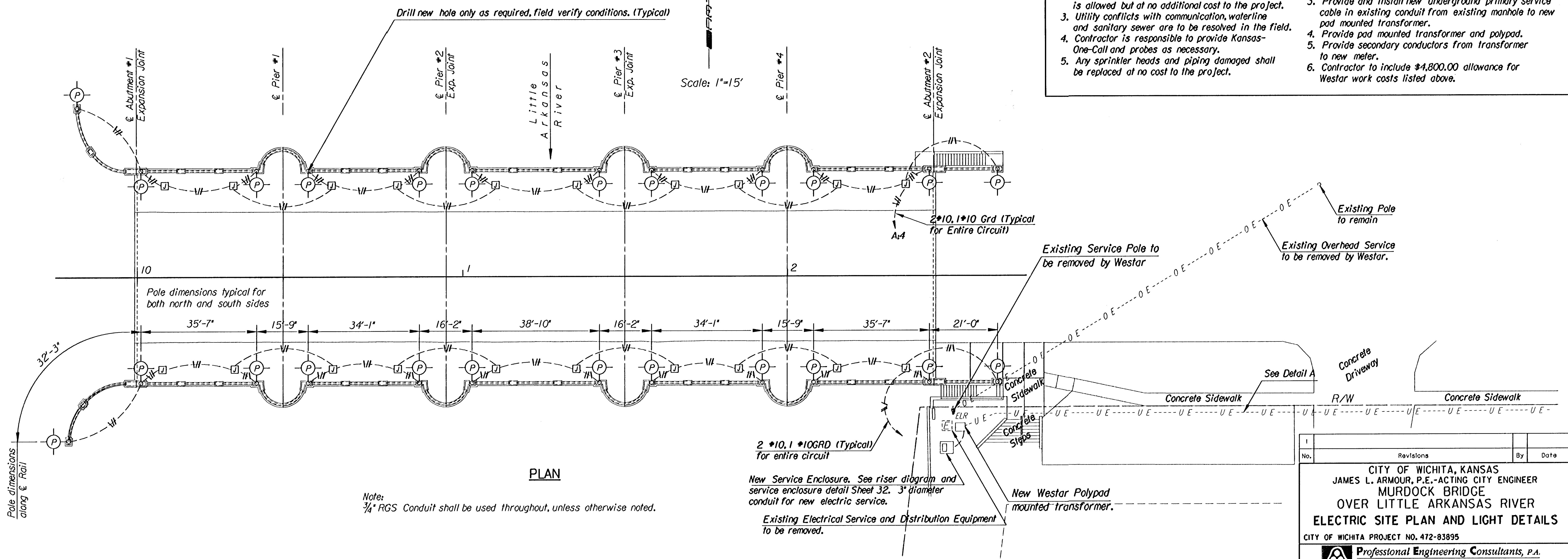


Note:  
Antique Street Lamps, Inc.  
Luminaire shown is WLT30 (Cast Iron/Black)  
Pole shown is D11/15 (Cast Iron/Black)

Hilti 3/4" Dia. HVA Adhesive anchors (HAS rods) w/10" embedment (10" dia. bolt circle) (4 per light)

LIGHT POLE DETAIL

- ELECTRIC SERVICE RELOCATION**
- |   |   |
|---|---|
| <p><b>WORK TO BE DONE BY CONTRACTOR</b></p> <ol style="list-style-type: none"> <li>1. Trench and bury, a minimum bury depth of 48", 215' l.f. of 2" PVC Schedule 40 conduit.</li> <li>2. Directionally drilling or sidewalk removal and replacement to accomplish the conduit placement is allowed but at no additional cost to the project.</li> <li>3. Utility conflicts with communication, waterline and sanitary sewer are to be resolved in the field.</li> <li>4. Contractor is responsible to provide Kansas-One-Call and probes as necessary.</li> <li>5. Any sprinkler heads and piping damaged shall be replaced at no cost to the project.</li> </ol> | <p><b>WORK TO BE DONE BY WESTAR</b></p> <ol style="list-style-type: none"> <li>1. Remove overhead secondary service that feeds existing service enclosure.</li> <li>2. Remove 4 poles and overhead feeds on bridge that currently provide street illumination.</li> <li>3. Provide and install new underground primary service cable in existing conduit from existing manhole to new pad mounted transformer.</li> <li>4. Provide pad mounted transformer and polypad.</li> <li>5. Provide secondary conductors from transformer to new meter.</li> <li>6. Contractor to include \$4,800.00 allowance for Westar work costs listed above.</li> </ol> |
|---|---|



Note:  
3/4" RGS Conduit shall be used throughout, unless otherwise noted.

No.	Revisions	By	Date

CITY OF WICHITA, KANSAS  
JAMES L. ARMOUR, P.E.-ACTING CITY ENGINEER  
MURDOCK BRIDGE  
OVER LITTLE ARKANSAS RIVER  
ELECTRIC SITE PLAN AND LIGHT DETAILS  
CITY OF WICHITA PROJECT NO. 472-83895

Professional Engineering Consultants, P.A.  
303 S. TOPEKA • WICHITA, KANSAS 67202  
316-262-2691 • FAX 316-262-3003

Designed by	R.A.S.	Checked by	D.C.G.
Drawn by	W.L.L.	Date	March 2004

Job No. 96940-2

12/1996/96940/002/OFFICECHECK/lightsl.dgn  
drawn by: ras  
plotted by: RAS 3-20-2004