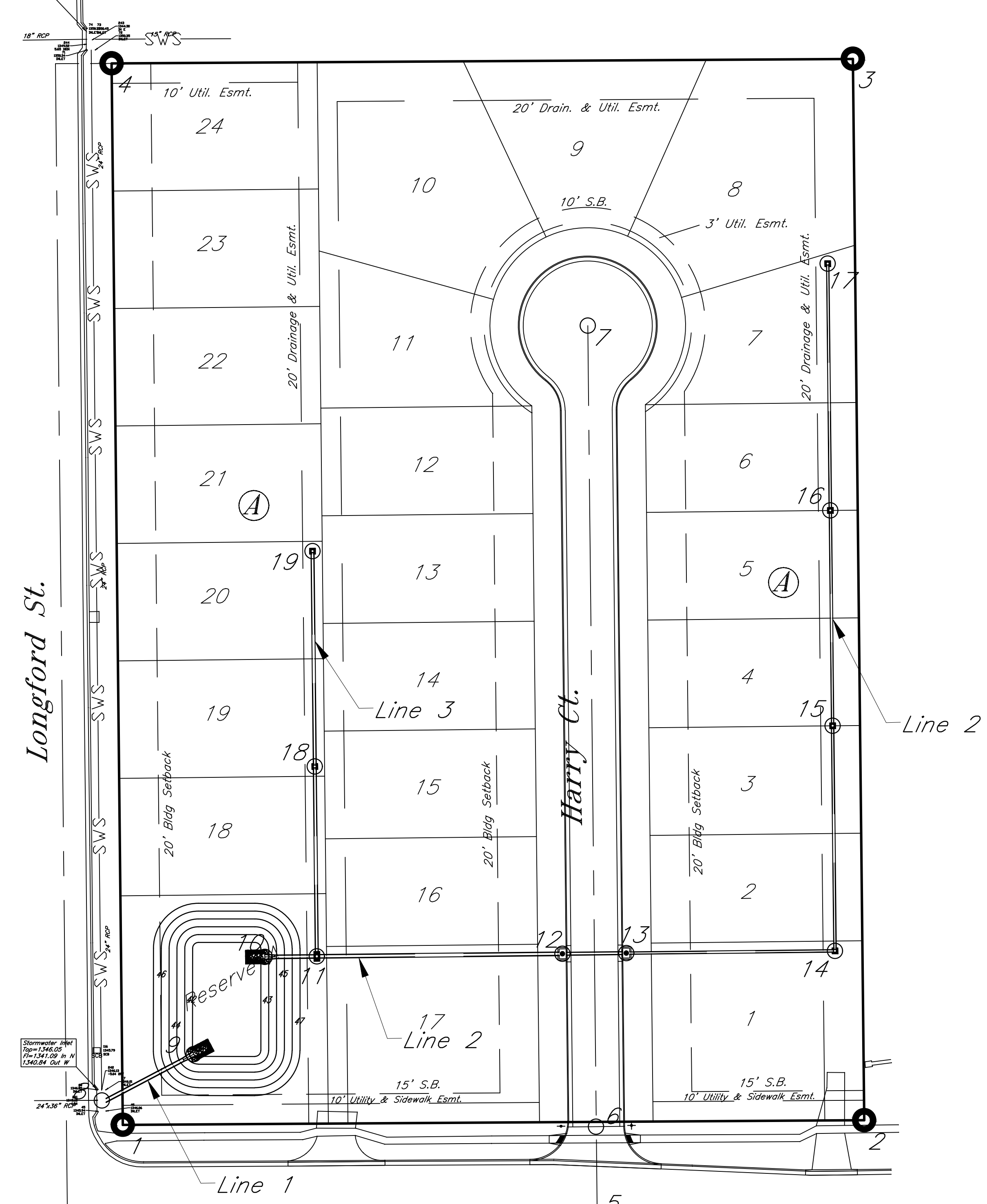


Stormwater Inlet  
 Pipe=15.00 in. Ø  
 15'x15.00 in. x  
 15'x15.00 in. x  
 15'x15.00 in. x



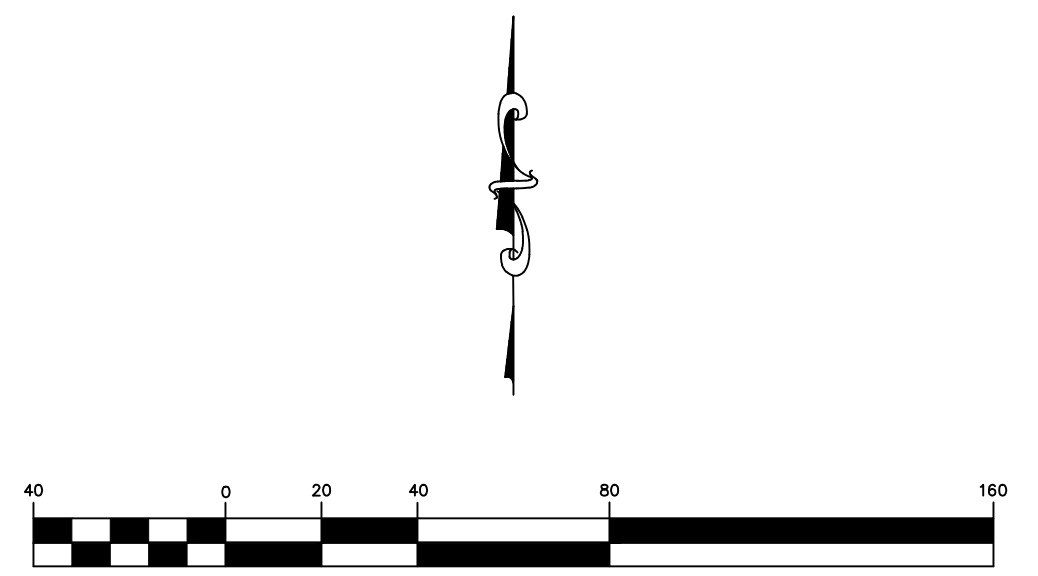
Point #	Northing	Easting	Desc.
1	1678249.52	1678020.30	Control Point
2	1678251.75	1678399.01	Control Point
3	1678794.02	1678393.25	Control Point
4	1678791.68	1678014.53	Control Point
5	1678200.96	1678262.65	Sta 0+00.00 BP
6	1678248.53	1678262.03	Sta 0+47.56 SP
7	1678657.73	1678257.79	Sta 4+56.79 Center
8	1678261.87	1678009.59	Sta 0+00.00 Line 1
9	1678285.58	1678056.51	Sta 0+52.58 Line 1
10	1678335.23	1678092.83	Sta 0+00.00 Line 2
11	1678285.58	1678056.51	Sta 0+26.56 Line 2
12	1678336.84	1678244.91	Sta 1+52.09 Line 2
13	1678337.19	1678277.49	Sta 1+84.67 Line 2
14	1678338.32	1678384.09	Sta 2+91.28 Line 2
15	1678453.32	1678382.87	Sta 4+06.28 Line 2
16	1678503.31	1678382.34	Sta 5+16.28 Line 2
17	1678689.37	1678380.36	Sta 6+42.34 Line 2
18	1678432.50	1678118.36	Sta 0+97.00 Line 3
19	1678542.50	1678117.19	Sta 2+07.00 Line 3

Southwest Corner  
 Sec.29, T27S, R2E

South 1/4 Corner  
 Sec.29, T27S, R2E



DATE: 7.19.2016  
 THIS SHEET HAS BEEN  
 SIGNED, SEALED AND  
 DATED ELECTRONICALLY



Harry's Landing  
 Control Map/Plan Sheet  
 Wichita, Kansas



PROJECT NUMBER 472-85291 (766370)			
KEM NO. 15184	FILE	DATE 03/2016	SHEET 13
DESIGN KM	DRAWN AHS	REVISED	