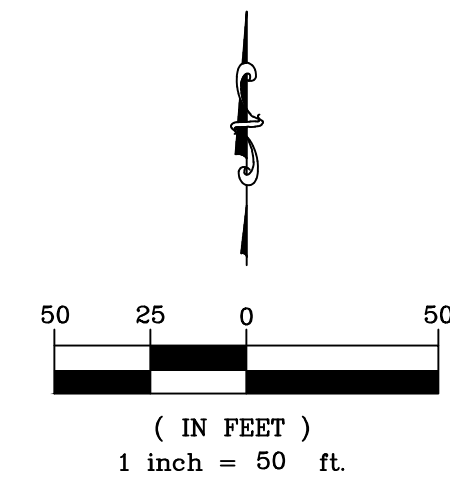


# One-Step Final Plat

## Harry's Landing

### Wichita, Sedgwick County, Kansas

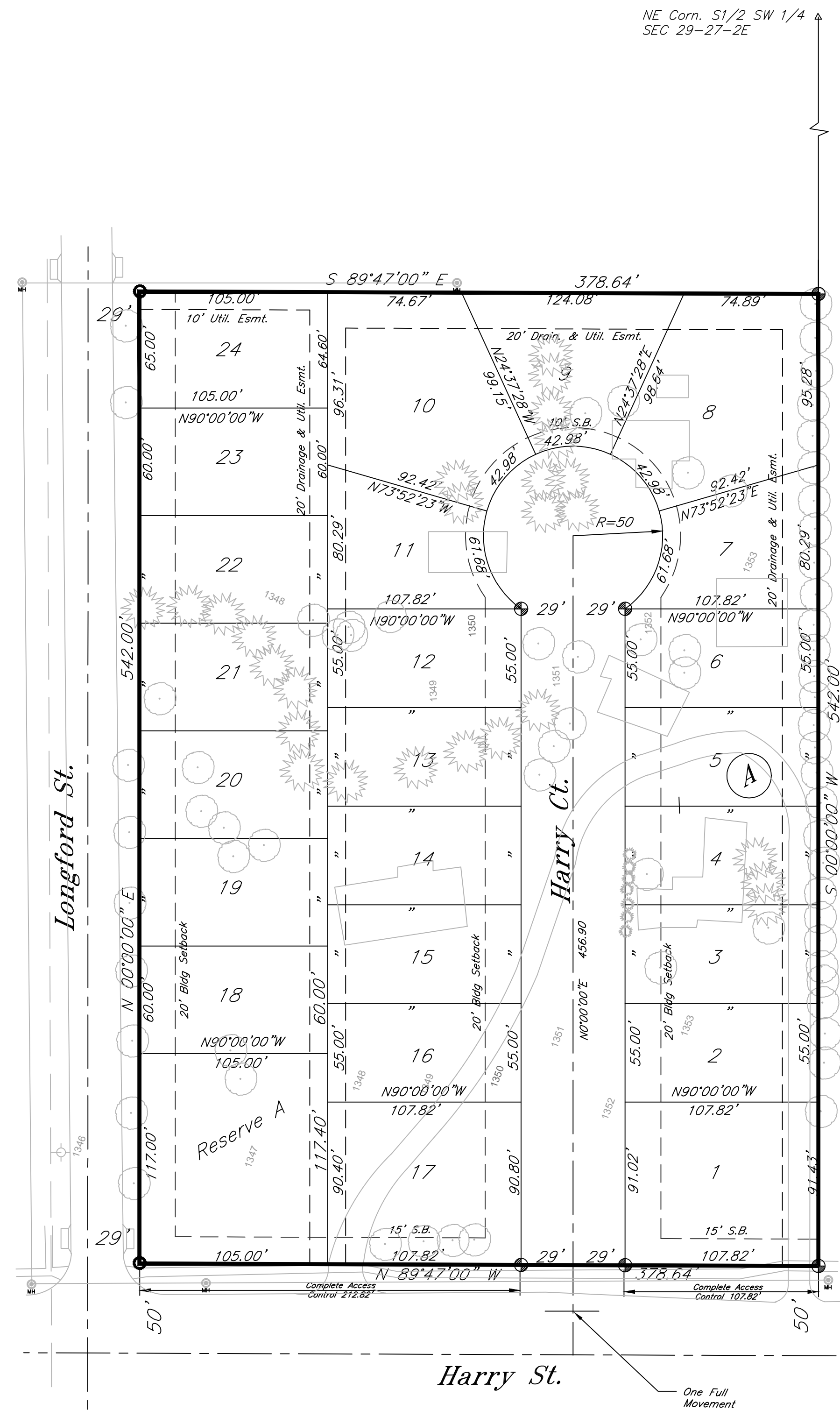
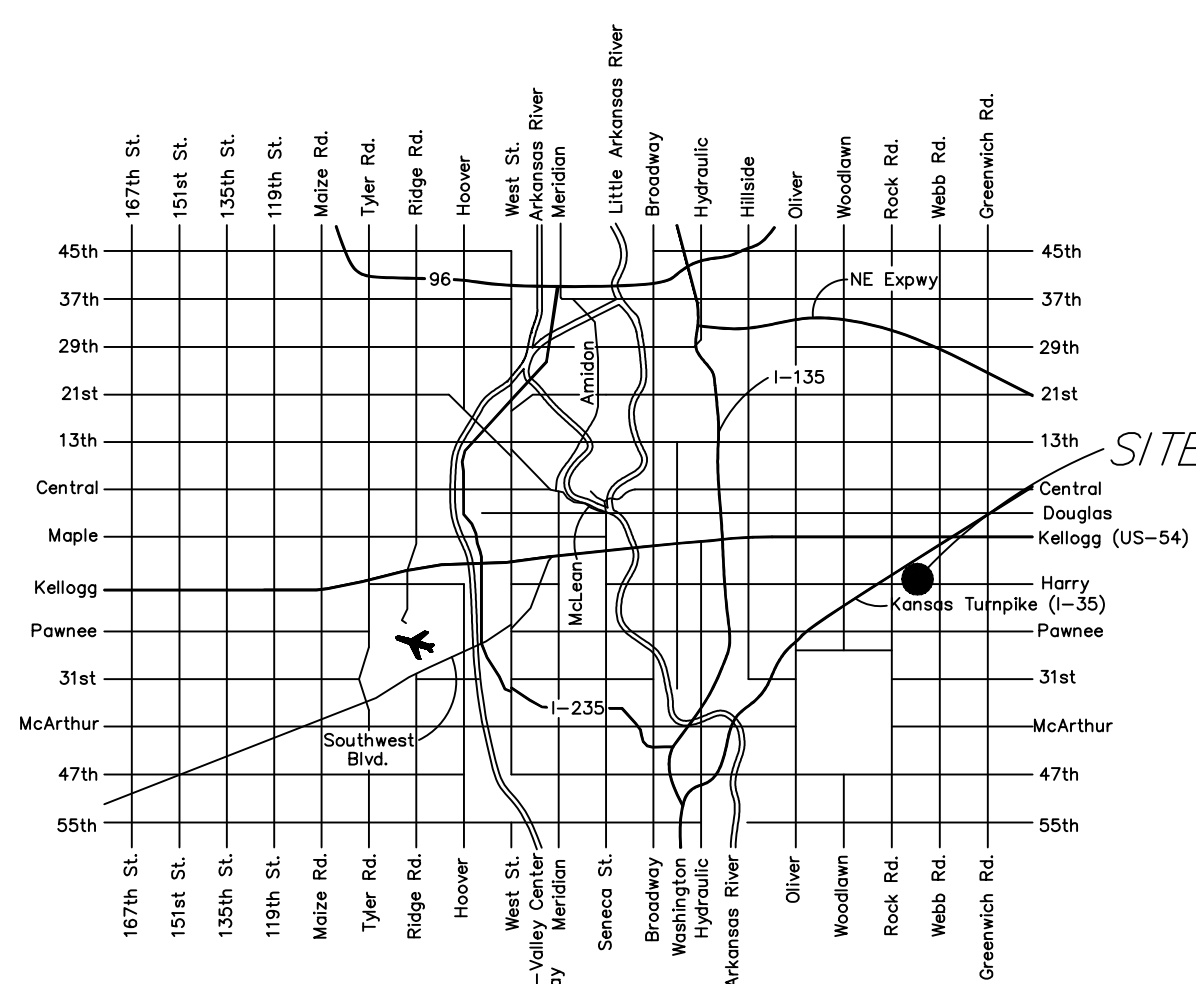
Part of the SW 1/4, Section 29, Township 27 South, Range 2 East of the 6th. P.M.



**PLAT LEGEND**

- 3/4" Iron Pipe (found)
- 1/2" Rebar
- ⊕ 3/8" Rebar (set) KEMPA CLS #157

**Benchmark**  
 □ cut TC, 34.7ft & 50.3ft W. of the NE corner of Reserve A, Harry & Webb Commercial Addition  
 Elevation=1354.80 NAVD 88



State of Kansas )  
 County of Sedgwick ) SS

State of Kansas )  
 City of Wichita ) SS

I, Bradley C. Ward, a professional land surveyor of the State of Kansas, do hereby certify that the following described tract of land was surveyed on the 11th day of November, 2015 and the accompanying final plat prepared and that all the monuments shown herein actually exist and their positions are correctly shown to the best of my knowledge and belief:

This plat of Harry's Landing Addition, Wichita, Sedgwick County, Kansas, has been submitted to and approved by the Wichita-Sedgwick County Metropolitan Area Planning Commission, Wichita, Kansas. Dated this \_\_\_\_\_ day of \_\_\_\_\_, 2015.  
 Wichita-Sedgwick County Metropolitan Area Planning Commission.

**LEGAL DESCRIPTION**

A tract of land generally located in the Southwest 1/4 of the Section 29, Township 27 South, Range 2 East, of the Sixth Principal Meridian, Sedgwick County, Kansas being more particularly described as:

The East 378.64 feet of the South 592.00 feet of the South 1/2 of the Southwest 1/4, Section 29, Township 27 South, Range 2 East.

All easements and rights-of-way within said tract are hereby vacated by virtue of KSA 12-512b as amended.

\_\_\_\_\_  
 Carol Chapman Neugent, Chair

\_\_\_\_\_  
 Dale Miller, Secretary

State of Kansas )  
 City of Wichita ) SS

This plat approved and all dedications shown herein accepted by the City Council of the City of Wichita, Kansas, this \_\_\_\_\_ day of \_\_\_\_\_, 2015.

At the Direction of the City Council

\_\_\_\_\_  
 Jeff Longwell, Mayor

\_\_\_\_\_  
 Karen Sublett, City Clerk

Entered on transfer record this \_\_\_\_\_ day of \_\_\_\_\_, 2015.

\_\_\_\_\_  
 Kelly B. Arnold, County Clerk

\_\_\_\_\_  
 Bradley C. Ward, P.L.S. #920

State of Kansas )  
 County of Sedgwick ) SS

State of Kansas )  
 County of Sedgwick ) SS

This is to certify that this plat has been filed for record in the Office of the Register of Deeds this \_\_\_\_\_ day of \_\_\_\_\_, 2015, at \_\_\_\_\_ o'clock \_\_\_\_\_ M; and is duly recorded.

\_\_\_\_\_  
 Bill Meek, Register of Deeds

\_\_\_\_\_  
 Tonya Buckingham, Deputy

Reviewed in accordance with K.S.A. 58-2005 on this \_\_\_\_\_ day of \_\_\_\_\_, 2015.

By: \_\_\_\_\_ Date \_\_\_\_\_  
 Basem Krichati, Owner  
 Company

State of Kansas )  
 County of Sedgwick ) SS

\_\_\_\_\_  
 Tricia L. Robello, L.S. #1246  
 Deputy County Surveyor  
 Sedgwick County, Kansas

This instrument was acknowledged before me on this \_\_\_\_\_ day of \_\_\_\_\_, 2015, by Basem Krichati, Owner, Company Name.

\_\_\_\_\_  
 Notary Public

My Commission Expires: \_\_\_\_\_

