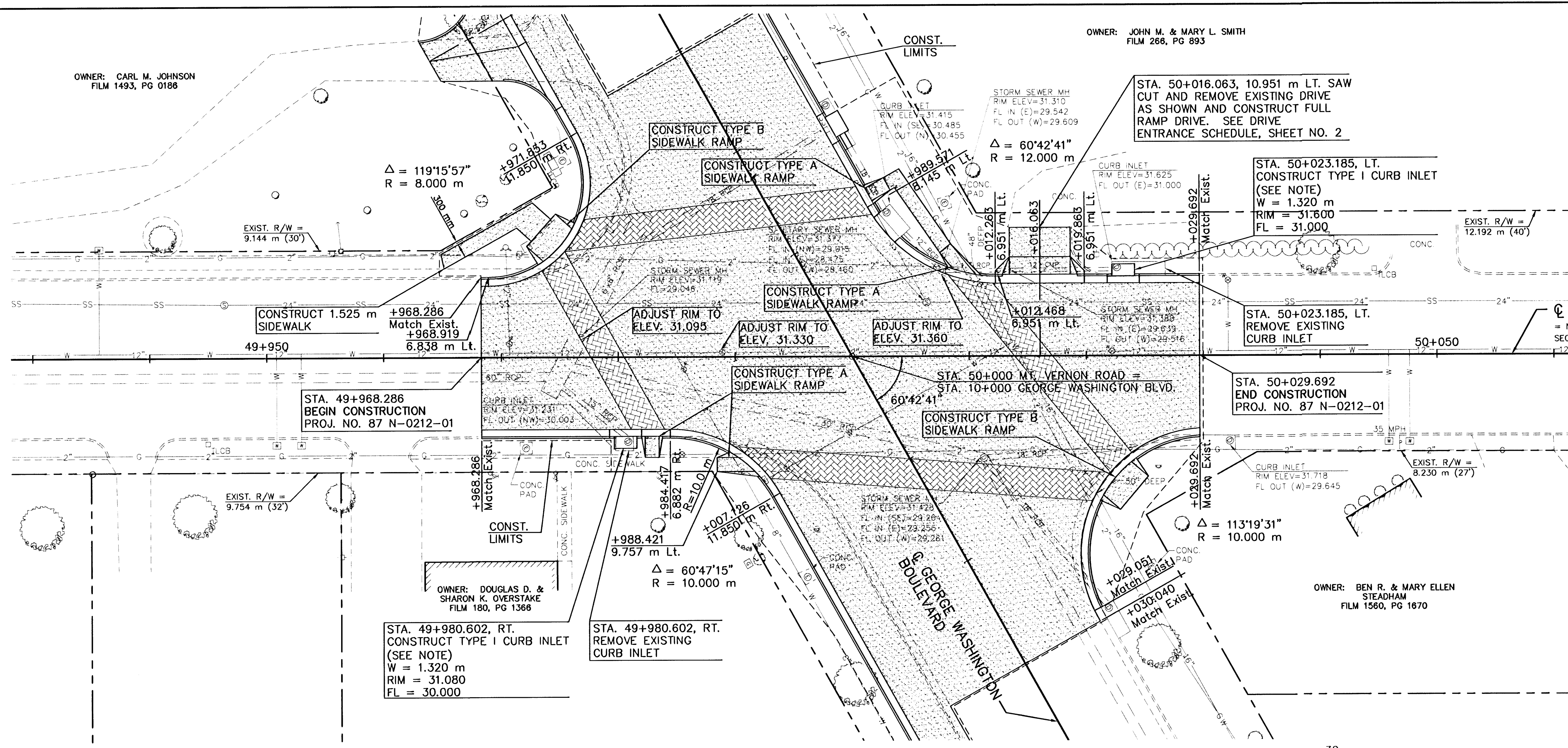


FHWA REGION NO.	STATE	PROJECT NO.	YEAR	SHEET NO.	TOTAL SHEETS
7	KANSAS	87 N-0212-01	2002	6	59

OWNER: CARL M. JOHNSON  
FILM 1493, PG 0186

OWNER: JOHN M. & MARY L. SMITH  
FILM 266, PG 893



STA. 50+016.063, 10.951 m LT. SAW CUT AND REMOVE EXISTING DRIVE AS SHOWN AND CONSTRUCT FULL RAMP DRIVE. SEE DRIVE ENTRANCE SCHEDULE, SHEET NO. 2

STA. 50+023.185, LT. CONSTRUCT TYPE I CURB INLET (SEE NOTE)  
W = 1.320 m  
RIM = 31.600  
FL = 31.000

STA. 50+023.185, LT. REMOVE EXISTING CURB INLET

STA. 50+029.692  
END CONSTRUCTION  
PROJ. NO. 87 N-0212-01

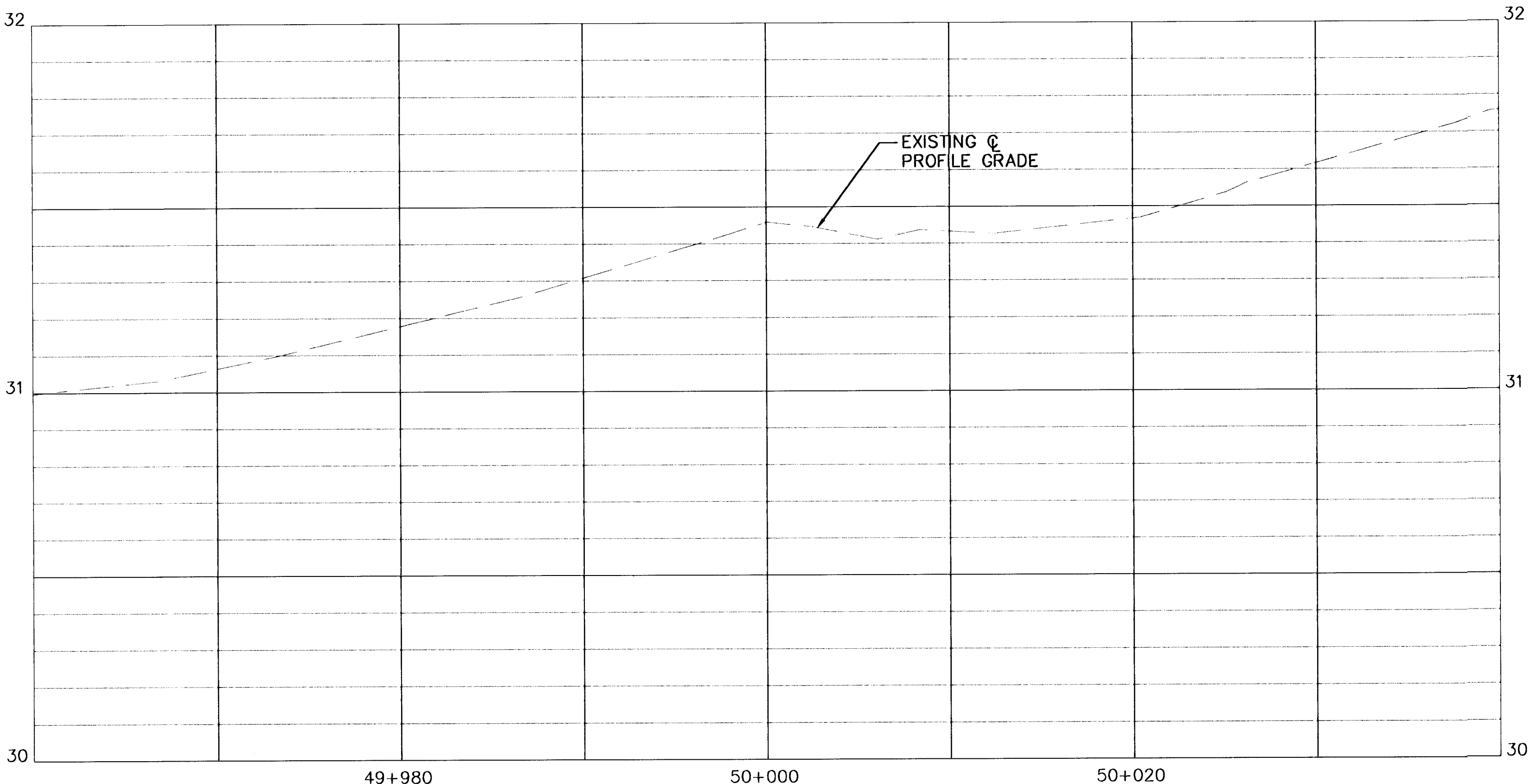
MT. VERNON ROAD  
= NORTH LINE, NW 1/4, SW 1/4,  
SECTION 35, 27S, 18E

NOTE:  
CONTRACTOR TO PROVIDE WATERTIGHT CONNECTION BETWEEN INLET AND EXISTING STORM SEWER

OWNER: BEN R. & MARY ELLEN  
STEADHAM  
FILM 1560, PG 1670

Std. Base File :  
Server File :  
Server :  
View =

Plotted By : J. TRUMPP  
Plot File : 2232GWB  
Plot Date : 4-25-02



- BM #1: CHISELED SQUARE SET ON S.W. CORNER OF CURB INLET AT N.E. QUADRANT OF GEORGE WASHINGTON BLVD. & MT. VERNON RD. INT. ELEV.=31.435
- BM #2: CHISELED SQUARE SET ON N.W. CORNER OF CURB INLET AT S.E. QUADRANT OF GEORGE WASHINGTON BLVD. & MT. VERNON RD. INT. ELEV.=31.500
- BM #3: "M" IN MUELLER ON FIRE HYDRANT AT N.W. QUADRANT OF GEORGE WASHINGTON BLVD. & MT. VERNON RD. INT. ELEV.=31.989

SCALE  
PLAN: 1:200  
PROFILE: 1:200 HORIZ.  
1:10 VERT.

SEE SHEET NO. 7-9 FOR INTERSECTION CONSTRUCTION DETAILS, JOINING PLAN AND LOCATION OF SIDEWALK CONSTRUCTION.

SEE SHEET NO. 41-42 FOR PAVEMENT MARKING PLAN

MOUNT VERNON ROAD STA. 49+950 TO STA. 50+050	
	PROJ. NO. A02232
KAW VALLEY ENGINEERING ENGINEERS AND LAND SURVEYORS 2319 NORTH JACKSON P.O. BOX 1304 JUNCTION CITY, KANSAS 66441 (785)762-5040 FAX (785)762-7744 E-MAIL kv@kveng.com	DATE 4-25-02
	DESIGNER CDM
	DRAWN BY JT
	CHECKED BY
	CFN
	2232GWB
	SHEET 6 OF 59