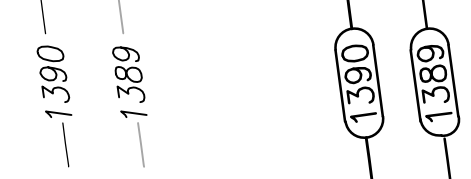


BENCHMARKS

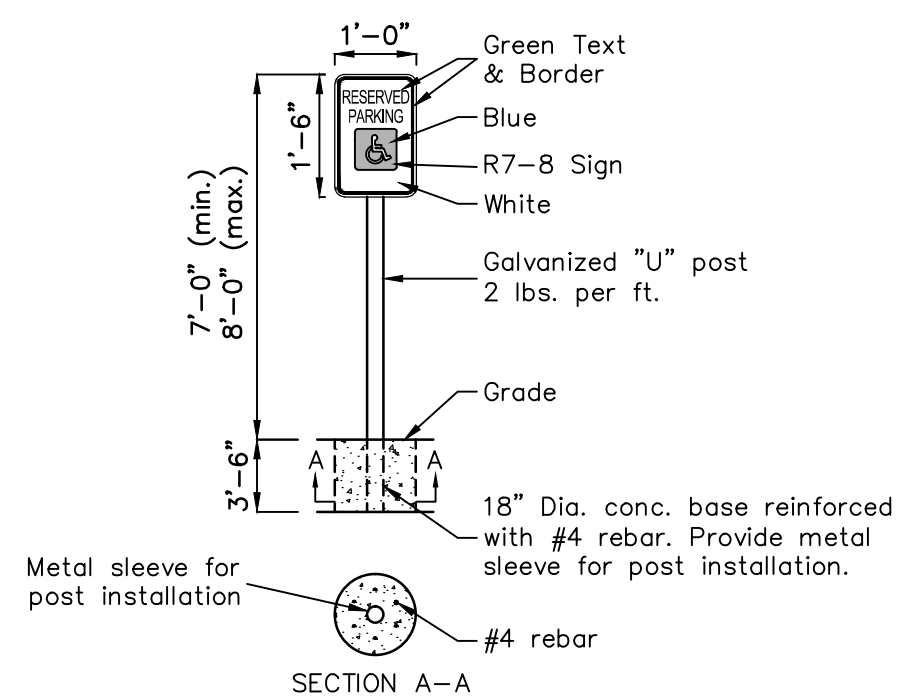
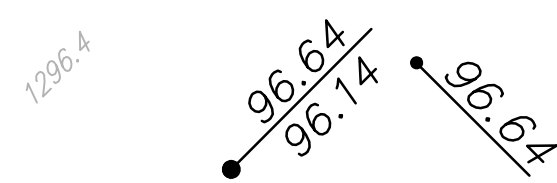
Benchmark #1 - "X" on the Back of Curb on the West Side of the Commerce St. Valley Gutter
Elev. = 1296.76' NAVD 88

Benchmark #2 - 1" Thimble at the South Section Line of Commerce St. at the R/W Jog
Elev. = 1295.60' NAVD 88

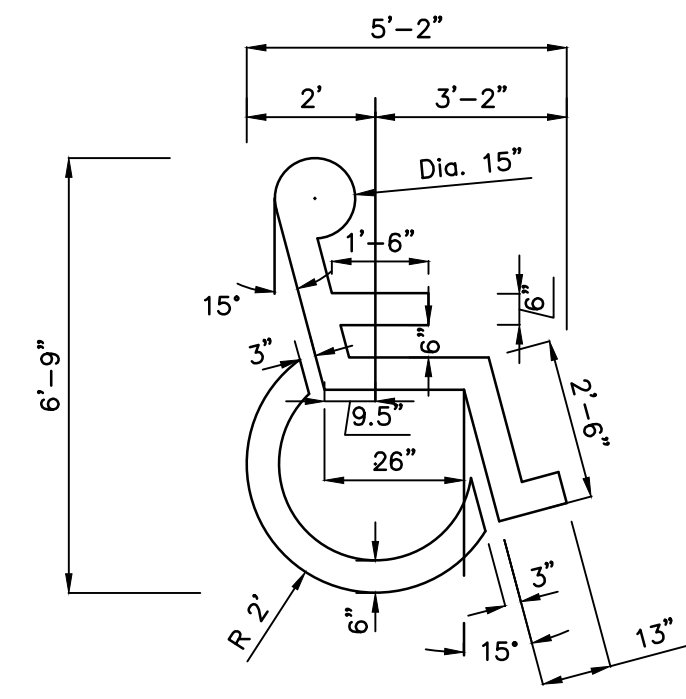
Existing Contours Proposed Contours



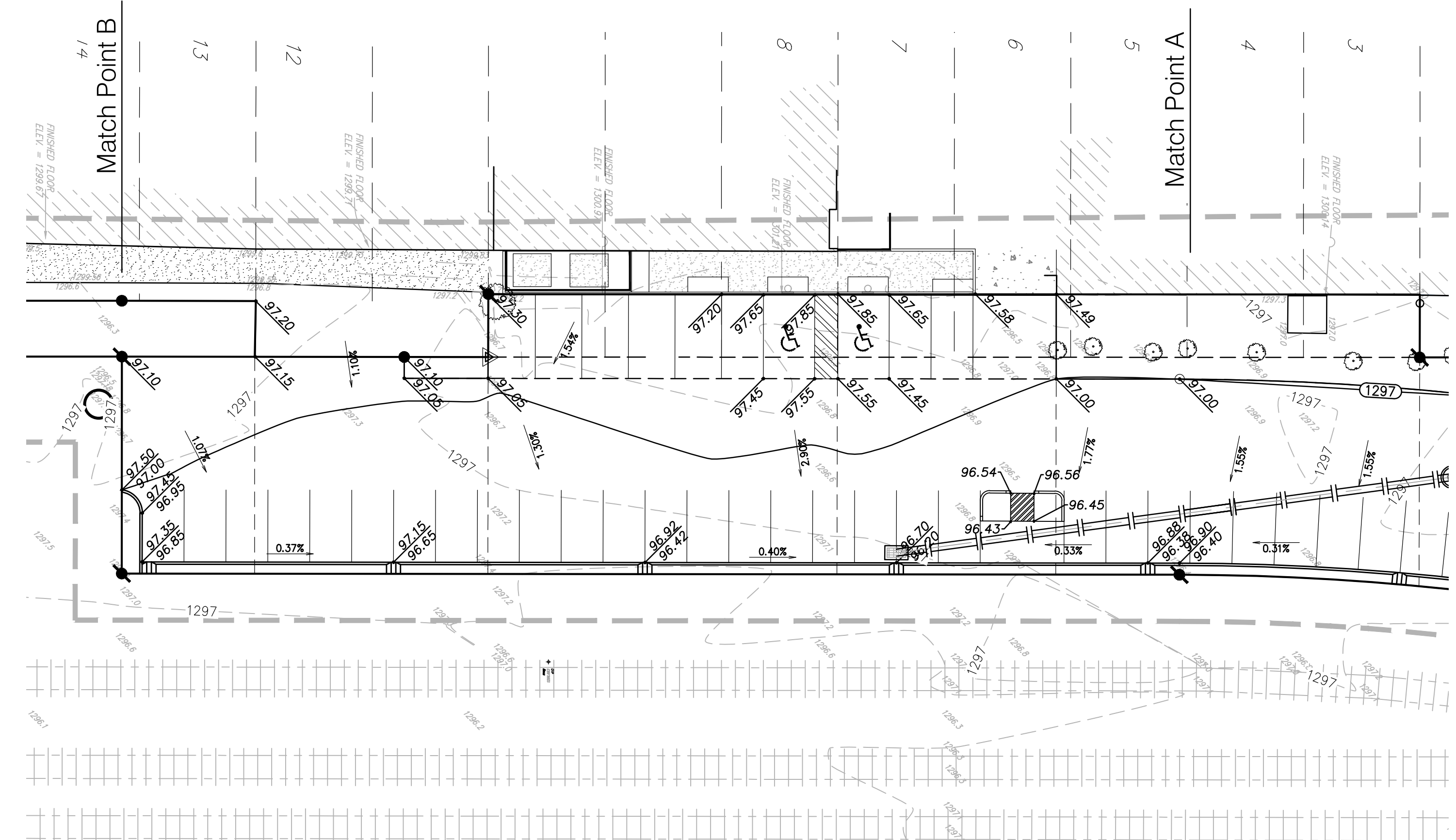
Existing Spot Elevations Proposed Spot Elevations



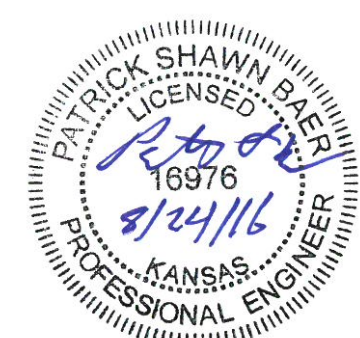
1 HANDICAP PARKING SIGN DETAIL
NOT TO SCALE



2 HANDICAP PAV. MARKING DETAIL
NOT TO SCALE



NOTE:
EXCESS EXCAVATION SHALL BE KEPT ON
SITE AND SPREAD IN RAILROAD R/W AS
THE INSPECTOR SEES FIT



GRADING PLAN
Scale 1"=20'-0"

Drawing File: E:/Commerce Parking Lot/Details/Detail02.dwg
Design: P. Baer
Drawn: L. Peter
Approved: P. Baer
Scale: 1"=20'

Project No. 14-10-E149 CAPITAL IMPROVEMENT PROJECT
COMMERCE PARKING LOT
GRADING PLAN
COMMERCIAL DISTRICT

Baughman Company, P.A.
315 Ellis St. Wichita, KS 67211 P 316-262-7271 F 316-262-0149
ENGINEERING | SURVEYING | PLANNING | LANDSCAPE ARCHITECTURE

AUGUST, 2016
SHEET 4 OF 27