

CONSTRUCTION PLANS FOR PROPOSED HARRY & 143RD SIGNALIZATION

FOR
THE CITY OF WICHITA,
SEDGWICK COUNTY, KANSAS

Gary Janzen, P.E., City Engineer

Paving Project

City Project No. 472-85250

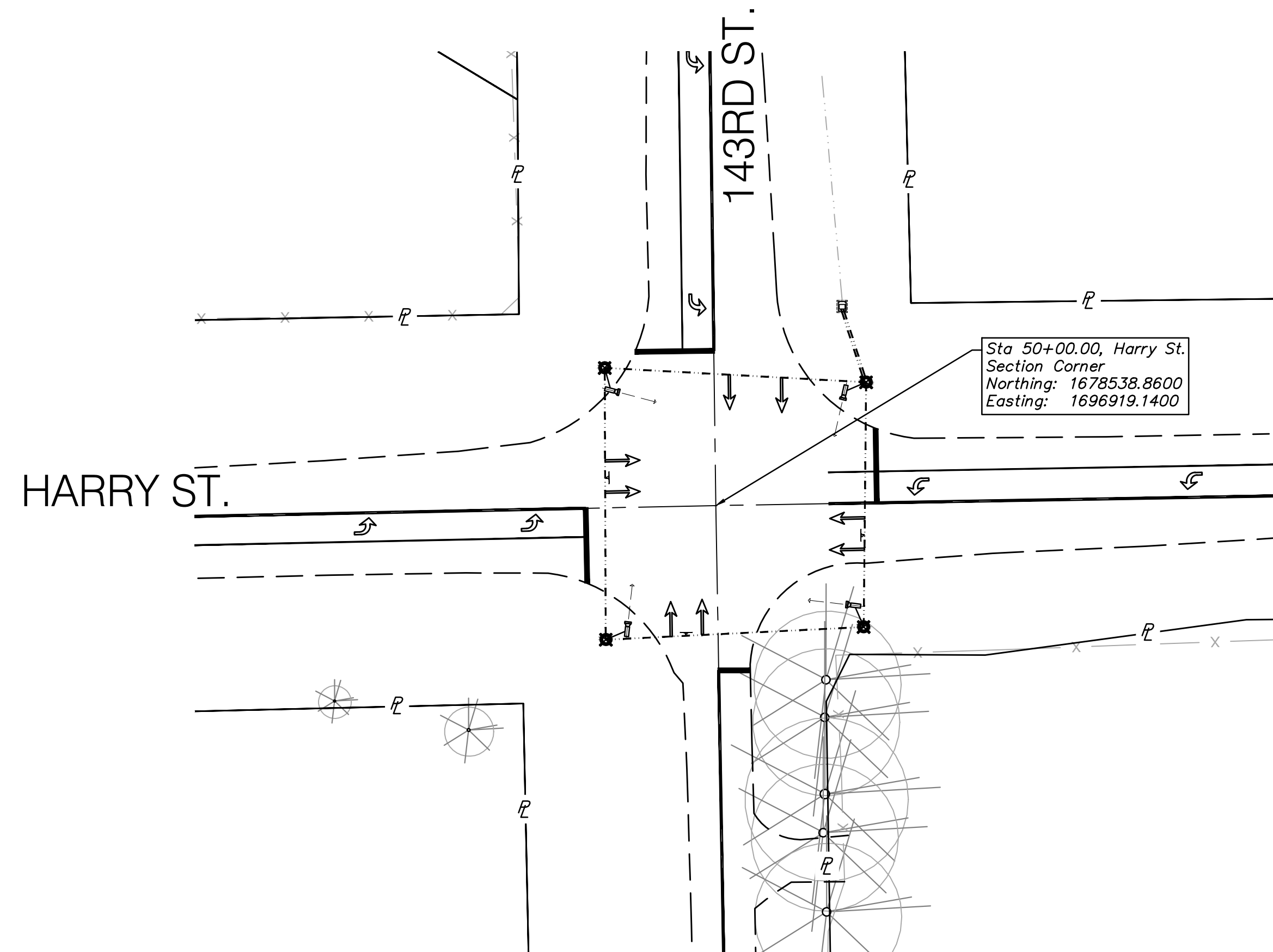
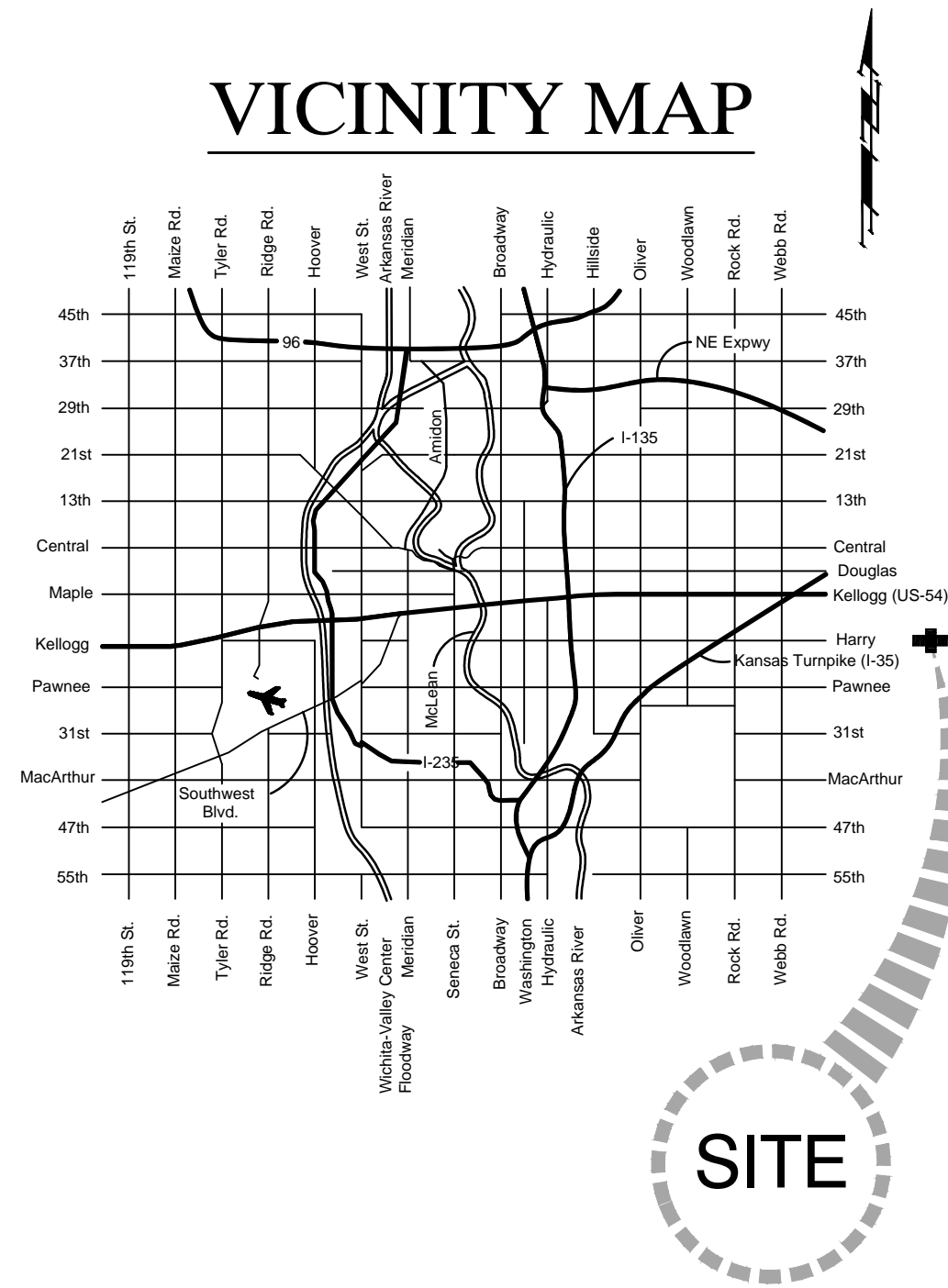
O.C.A. No. 707092

AUGUST 2016

FINAL PLANS

Index

- 1 Title Sheet
- 2 Signalization & Wiring Plan
- 3 Signing & Marking Plan
- 4 Signal Details



APPROVED — DATE

GARY JANZEN, P.E., CITY ENGINEER
CITY OF WICHITA, KANSAS

Drawing File: E:\Projects\Harry & 143rd_1602-E404\Civil 3D\Base Map AUGUST, 2016

Baughman **Baughman Company, P.A.**
315 Ellis St. Wichita, KS 67211 P 316-262-7271 F 316-262-0149
ENGINEERING | SURVEYING | PLANNING | LANDSCAPE ARCHITECTURE